

2006

Microphone Stands and Accessories

The Last Word In Microphone Support

QUALITY, INNOVATION AND A COMMITMENT TO OFFER THE MOST
UNIQUE PRODUCT TO TODAY'S PERFORMING MUSICIAN.

IT'S NO WONDER ON-STAGE STANDS® HAS BECOME
THE STANDARD AROUND THE WORLD
IN MICROPHONE SUPPORT.



**On-Stage
Stands®**

Microphone Support with unique, patented design



MS7201B **Round Base Microphone Stand**
 An industry standard! The 7lb. sand-cast base is sturdy enough for road abuse yet light enough to carry. This black powder coat stand sports a die-cast zinc clutch and is also available with a chrome shaft (MS7201C).
Height Adjustment: 33"-60"
Base Diameter: 10"
Base Weight: 7 lbs.

MS7250 **Dome Base Microphone Stand**
 Thanks to the improved low profile design and the multiple rubber feet, this stand will not wobble or tip! This stand also comes complete with a die-cast zinc clutch and a black powder coat finish.
Height Adjustment: 33"-60"
Base Diameter: 10"
Base Weight: 7 lbs.

MS7201QRB **Quik Release Microphone Stand**
 This round base variation features a patented spring-loaded clutch trigger for fast two-handed operation.
Height Adjustment: 34"-62"
Base Diameter: 10"
Base Weight: 7 lbs.

MS7255 **Dome Base Microphone Stand w/ Patented Foot Pedal**
 Use only one hand to adjust the height or unscrew your clip! The anti-rotation feature means never holding the lower shaft to prevent loosening from the base. Oversized threads means it takes only seconds to assemble or disassemble this stand! Just turn the shaft clockwise to lock and simply step on the foot pedal and turn counter-clockwise to release.
Height Adjustment: 33"-60"
Base Diameter: 10"
Base Weight: 7 lbs.

MS7800C **Pro-Xpandable Heavy Duty Microphone Stand**
 This 3-shaft, 2-clutch design features an internal air suspension system and all-steel construction. With the oversized 12" base it's safe to use even your most expensive microphone. Comes complete in chrome finish.
Height Adjustment: 28"-60"
Base Diameter: 12"
Base Weight: 12.5 lbs.

MS7255PG **Dome Base Microphone Stand w/ Patented Foot Pedal and Pistol Grip Clutch**
 Same as MS7255, but includes a pistol grip on the top of the stand for one-handed quick and easy height adjustments.
Height Adjustment: 38"-61"
Base Diameter: 10"
Base Weight: 7 lbs.



The ergonomically designed Pistol Grip clutch fits perfectly in the palm of your hand for easy one-handed height adjustments.



This patented Quik Release feature allows for fast and easy height adjustments.

The improved low profile patented design and the 8 rubber feet keep the stand sturdy, so the mic will never knock you in the face.

Microphone Support for stage, studio and all other pro audio applications

MS7625
Patented Hex Base
Quarter-Turn
Threadless Mic Stand

This revolutionary threadless stand brings an end to the seemingly eternal chore of screwing your microphone stand into your base. In one swift motion, just push down and turn the shaft one-quarter clockwise to lock, or push down and turn one-quarter counter-clockwise to remove. The uniquely shaped 8lb. base on this patented item means more room for feet placement. And, the low profile design makes for a more stable stand. Also available in chrome. Ask about our P.O.P display kit.

MS7600
Hex Base Microphone Stand

Same as MS7625, but with a conventional threaded shaft.

Features on both the MS7600 and MS7625:

Height Adjustment: 33"-61"
Base Spread: 11.5"

Other Features:

Spring-loaded plunger and a patented anti-rotation design is featured on the MS7625.

MS7625PG
Patented Hex Base
Quarter-Turn Mic Stand
w/ Pistol Grip Clutch

Same as MS7625, but includes a pistol grip on the top of the stand for one handed height adjustments.

SMS7630C
Hex-Base Studio Stand
w/ Telescoping Boom

This heavy-duty studio stand is the first of its kind to combine an internal air suspension system with a boom and offer either rubber feet or casters. The 17lb. Hex-Base brings superior stability to this stand. Also available in black (SMS7630B).

Height Adjustment: 42"-70"
Boom Length: 32"-49"
Base Spread (with out casters): 18"
Base Spread (with casters): 24"

SMS30
Mic Stand Casters
Set of 3

3 Casters for the SMS7630. Hardware included.



SMS7650
HEX-BASE® Studio Boom

The HEX-BASE® Studio Boom is the new standard by which others will be judged. It is equipped with 2 straight boom shafts that can be attached for studio recording. Or remove the front boom and use the back boom for project studio work. The boom arm slides effortlessly through the 1" square housing and locks with a tension knob. Boom angle adjusts with a 40-tooth clutch. The 17lb. patented base is a step above the rest as it provides a low center of gravity, giving it stability even when moved. Also includes removable casters.

Height Adjustment: 40"-82"
Boom Length: 82" w/ 7" arm extension
Base Spread (with out casters): 18"
Base Spread (with casters): 24"
Total Stand Weight: 40 lbs.

Other Features for SMS7650:

1. 7lb. sliding counterweight w/ locking threaded knob.
2. 3 Telescoping shafts w/ 2 large friction knobs.
3. Solid steel lug connects shaft to base.



Microphone Support for musicians, contractors and the rest of the audio world



MS9700B
Heavy-Duty Tripod Base Microphone Stand

This heavy duty stand is built to last! It features zinc die-cast leg housing and a scratch resistant finish.

Height Adjustment: 36"-64"
Base Diameter: 24"



MS9701B
Heavy-Duty Euro Boom Microphone Stand

A top-of-the-line boom stand with heavier die-cast leg housing, thicker tubing and premium threads.

Height Adjustment: 36"-64"
Base Diameter: 24"



MS9701TB
Heavy-Duty Tele-Boom Microphone Stand

Same as MS9701B, but with a 19"-30" tele-boom.

Height Adjustment: 36"-64"
Base Diameter: 24"



MS7701B
Euro Boom Microphone Stand

Our best selling stand! This Euro Boom boasts hybrid sheet metal and composite leg housing, making it unbreakable. A removable boom arm and its ability to fold flat make this stand a must for every member of the band. Also features a zinc mid-point clutch.

Height Adjustment: 36"-63"
Boom Length: 30"
Base Spread: 23"



MS7700B
Euro-Style Tripod Base Microphone Stand

An extremely stable stand! Like the MS7701B, this tripod base stand also features long foldable legs and is ideal for the touring pro.

Height Adjustment: 36"-63"
Base Spread: 23"



MS7701TB
Telescoping Euro Boom Microphone Stand

This variation of the MS7701B adds a telescoping boom arm to provide the right boom length for any application.

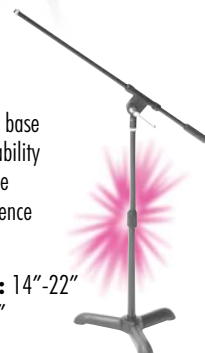
Height Adjustment: 36"-63"
Boom Length: 19"-33"
Base Spread: 23"



MS7311B
Kick Drum / Amp Microphone Stand

The heavy casted tripod base gives this design the stability of a larger stand, yet the shape adds the convenience of being compact.

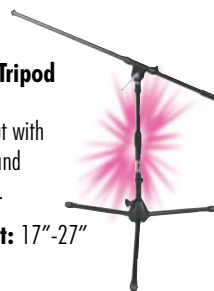
Height Adjustment: 14"-22"
Boom Length: 17.5"
Base Spread: 11"



MS7411B
Kick Drum / Amp Tripod w/ Boom

Like the MS7311B, but with a folding tripod base and composite leg housing.

Height Adjustment: 17"-27"
Boom Length: 19"
Base Spread: 26"



MS7920B
Kick Drum / Amp Microphone Stand

This variation of the MS7311B features a "U" shape base instead of the heavy tripod design.

Height Adjustment: 8"-14"
Boom Length: 16"
Base Spread: 4.5"- 7.5"



Other Features:

1. The easy-to-use Euro-Style clutch featured on the boom stands in this series allow for convenient one-handed angle adjustments on stage.
2. Tripod base leg housing is made from a combination of plastic and steel and folds for easy storage and travel.



Microphone Support that sets a new standard by which others will be judged



**SB9600
Tripod Studio Boom**

Our most affordable and most stable studio boom combines a tripod base, two straight boom shafts and a 7" mini boom extension into one mean microphone support machine. With fold-and-go convenience, and steel tubing, this is a great item for any budget!

Height Adjustment: 44"-80"
Boom Length: 82"



**SB96+
Studio Boom Microphone Stand**

This stand includes nearly everything you need for starting a studio project. At its core is a telescoping vertical shaft and an extra long telescoping boom with a solid steel counterweight. The 40-teeth boom clutch means non-slip locking power. Added to the end of the boom is a Posi-Lok™ mini-boom arm. The four folding legs that lock in place and attached locking casters make for a remarkably stable foundation. And, this studio boom can be taken anywhere as the entire stand folds for travel.

Height Adjustment: 45"-76"
Boom Length: 43"-79"
Base Spread: 34"



Other Features:
The folding legs with locking device on the SB96+ is ideal for the traveling musician.



**MSA9500
Posi-Lok™ Boom System**

The essential pack for anyone responsible for the set up of musical equipment. This System consists of:
(1) Posi-Lok™ Clutch
(2) Connectors
(1) 7", 13" and 19" boom attachments.



**MSA9504
Posi-Lok™
Mini-Boom 19"**

This boom extension is the longest in the Posi-Lok™ line



**MSA9505
Posi-Lok™ Telescoping
Mini Boom**

The Telescoping Mini Boom offers the most flexibility of all the Posi-Lok™ booms. It has the same features as the 7" Posi-Lok™ boom, but adds a 9"-16" telescoping arm.



**MSA9501
Posi-Lok™ Clutch**

The center piece of the Posi-Lok™ system comes complete with two 52-teeth disks that rotate 300 degrees and grip together. Built with an ergonomic adjustment knob.



**MSA9508
Posi-Lok™
Side Mount Boom**

A must-have for instrument miking! The adjustable side mount boom grips to any round shaft.



**MSA9502
Posi-Lok™
Mini-Boom 7"**

This versatile boom is designed specifically for those hard to reach places, such as drum or other instrument miking.

**MSA9503
Posi-Lok™ Mini-Boom 13"**

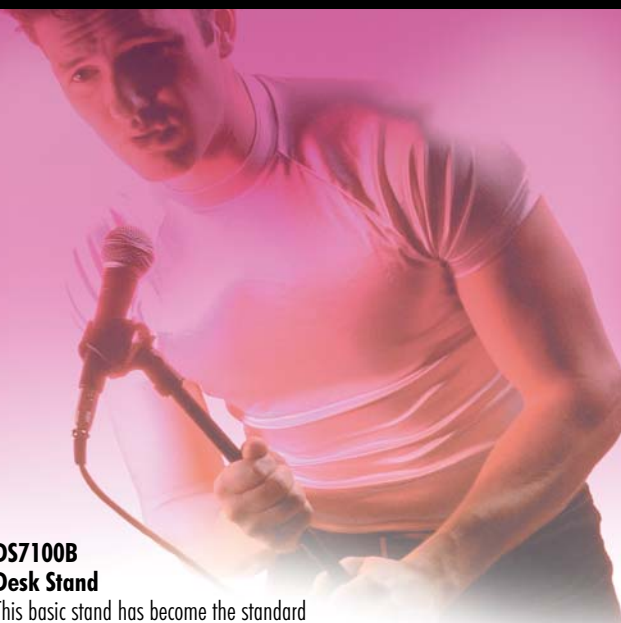
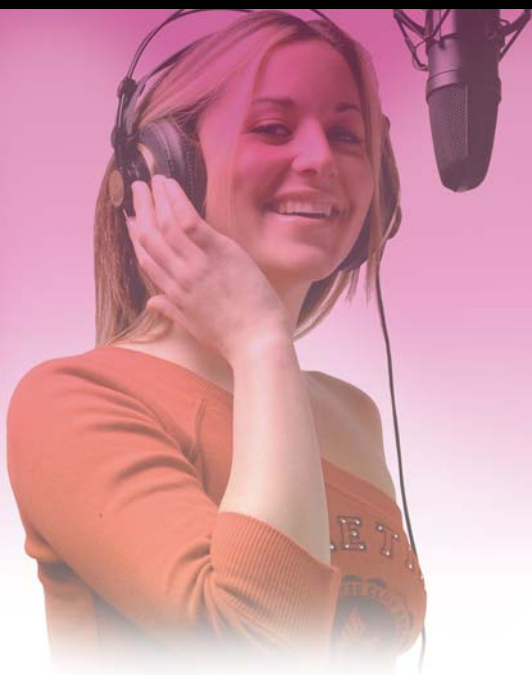
Like the MSA9502, but with a 13" boom extension.

Other Features:

The Posi-Lok™ 52-teeth design gives you the versatility to create your own mic angle techniques. No other microphone support system combines compact size and locking support at any angle like Posi-Lok™.



Microphone Support with innovative, patented design



**MSA7020B
Top Mount Boom**
Professional non-telescoping boom.
Length: 35"



**MSA7020TB
Top Mount Tele Boom**
A telescoping boom with separate euro-style knobs that adjusts the length from 32"-48".



**MSA7040B
Top Mount Euro-Style Boom**
Professional non-telescoping boom with deluxe chrome washer. Length: 16"



**MSA7040TB
Tele-Boom**
Professional telescoping boom with deluxe chrome washer. Length: 19"-32"



**MSA9720B
Platinum Series Boom Arm**
Professional all-steel non-telescoping boom. Length: 32"



**MSA9720TB
Platinum Series Tele-Boom**
Professional all-steel telescoping boom. Length: 19"-30"

Other Features:

Booms in the MSA7020 and MSA7040 series feature neoprene rubber and interlocking teeth which allow for maximum grip. The die-cast steel construction combined with a locking washer will secure any boom in place.



**DS7100B
Desk Stand**

This basic stand has become the standard for broadcast pros! Black powder coat shaft also available in chrome (DS7100C).

**Height: 4"
Base Diameter: 6"**



**DS7200B
Adjustable Height
Desk Stand**

This stand sports a die-cast steel clutch. The removable black shaft is also available in chrome (DS7200C).

**Height adj.: 9"-13"
Base Diameter: 6"**



**DS7200QRB
Quik-Release™
Adjustable Desk Stand**

This inventive stand includes a quik release clutch trigger for fast two-handed operation.

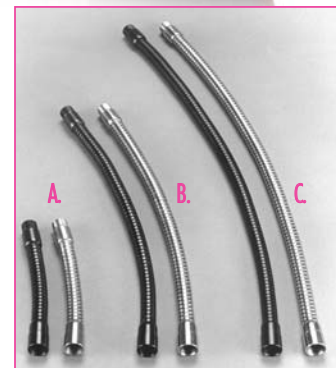
**Height adj: 9.5"-16"
Base Diameter: 6"**



**DS300B
Posi-Lok™ Boom Desk Stand**

The innovative Posi-Lok™ clutch on this stand features 52-locking teeth and an ergonomic knob.

Base Diameter: 6"



A. MSA9030-06B
6" Gooseneck, black

MSA9030-06C
6" Gooseneck, chrome

B. MSA9030-13B
13" Gooseneck, black

MSA9030-13C
13" Gooseneck, chrome

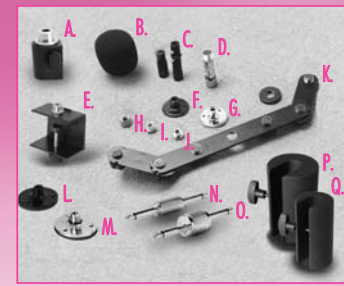
C. MSA9030-19B
19" Gooseneck, black

MSA9030-19C
19" Gooseneck, chrome

Other Features:

Solid steel male and female threaded ends; The flexible neck is made from interlocking rolled metal.

Microphone Support means accessories and replacement parts for your every need



**ASVS4-B
4" Pop Blocker**

Prevent annoying vocal thrusts with this adjustable clip-on voice screen.



**ASVS6-B
6" Pop Blocker**

Same features as ASVS4-B, but with a 6" voice screen.



**ASVS6-GB
6" Pop Blocker with Gooseneck and Clamp**

Our improved Pop Blocker connects easily to any microphone stand or boom with an "Easy Grip Clamp" and V-shaped bracket attachment that fits onto any shaft up to 7/8" diameter. Includes 6" bar and 13" steel gooseneck.



DM01 Drum Rim Clip

This shock proof clip securely attaches to a drum rim and works with any 5/8" - 27 mic clip.



DM50 Drum Rim Mic Clip

The isolation cylinders on this clip dampens unwanted vibrations while miking your drum.



**MSB6500
Round Base Mic Stand Bag**

Heavy-duty nylon bag fits either 3 round bases, 3 hex-bases or a combination of both, plus the shafts and booms.

Dimensions:
36.125" x 12.625" x 3.75"

**MS7510
Microphone Pro-Pak**

The Microphone Pro-Pak offers musicians all the gear they need to start rocking. Great for beginners or pros, this pack is available with the above color POP display so that it is immediately accessible in the store...a benefit for both dealers and consumers alike.

Pak includes:
(1) Tripod boom stand
(1) MY200 mic clip
(1) 20 ft. XLR-XLR cable
(1) AS400 dynamic handheld microphone.

AS400 Microphone features:
- Cardioid Pattern
- Frequency Response: 80Hz~12Hz
- Impedance: 600 ohm +/-30% at 1 KHz
- Sensitivity: -74dB +/-3dB
- On/Off Switch

Height Adjustment: 38"-61"
Base Spread: 24"

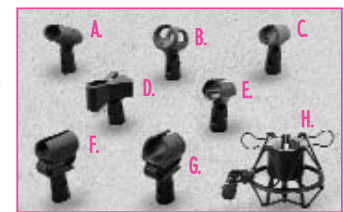


**MS7520
Microphone Pro Pak**

Same as MS7510, but w/ AS420 dynamic handheld microphone.

AS420 Microphone features:
- Cardioid Pattern
- Frequency Response: 80Hz~13Hz
- Impedance: 500 ohm +/-30% at 1 KHz
- Sensitivity: -73dB +/-3dB
- On/Off Switch

- A. QK10B Quik Release Mic Adapter**
- B. ASWS58-B Foam Windscreen**
Black. (also available in red, blue, orange, yellow, gray & green)
- C. QK2 Quik Klip (Black)**
- D. QK2 Quik Klip (Chrome)**
- E. TM03 Table Mic Clip**
- F. TM02B Flange Mount**
- G. TM02C Flange Mount (Chrome)**
- H. MA100 Mic Screw Adapter**
- I. MA200 Mic Screw Adapter**
- J. MA300 Mic Screw Adapter**
- K. MY700 Stereo Mic Bar**
New 45-degree design
- L. TM08B Flange Mount**
- M. TM08C Flange Mount**
TM08B/C features a 3mm bottom shock pad
- N. PC304 Straight Pedal Coupler**
- O. PC305 Offset Pedal Coupler**
- P. CW6 6lb. Counterweight**
- Q. CW3 3lb. Counterweight**
Counterweights will fit shafts up to 7/8"



- A. MY-100 Heavy-Duty Rubber Mic Clip**
- B. MY-110 Wireless Mic Clip**
- C. MY-120 Condenser Mic Clip**
- D. MY-200 Clothespin-Style**
- E. MY-250 Euro-Style**
- F. MY-320 - 20mm Shock Proof**
- G. MY-325 - 25mm Shock Proof**
- H. MY-410 Studio Mic Shock Mount**

We've Added POINT-OF-PURCHASE POWER

Our award-winning packaging is eye-catching and acts as a "silent salesperson" describing all of the features of the product.



On-Stage Stands® is a registered trademark of The Music People, Inc.

©2006 On-Stage Stands® The microphones & instruments pictured in this brochure are not affiliated with On-Stage Stands®. All product availability and specifications are subject to change.

On-Stage Stands®

The Music People, Inc. East
Corporate Office & Distribution Center
154 Woodlawn Rd., Suite C
Berlin, CT 06037
800-289-8889 or 860-829-9229

The Music People, Inc. West
Distribution Center
624 West Carob St.
Compton, CA 90220