

# iD14

10in | 6out  
Audio Interface

Manual v1.3

AUDIANT

# Welcome to your new Audient iD14 Audio Interface

To help get you started please visit [audient.com/products/iD14](https://audient.com/products/iD14) to download the latest software and firmware.

## Inside the box:

- iD14
- USB-C to USB-C cable
- Quick Start Guide

## Features include:

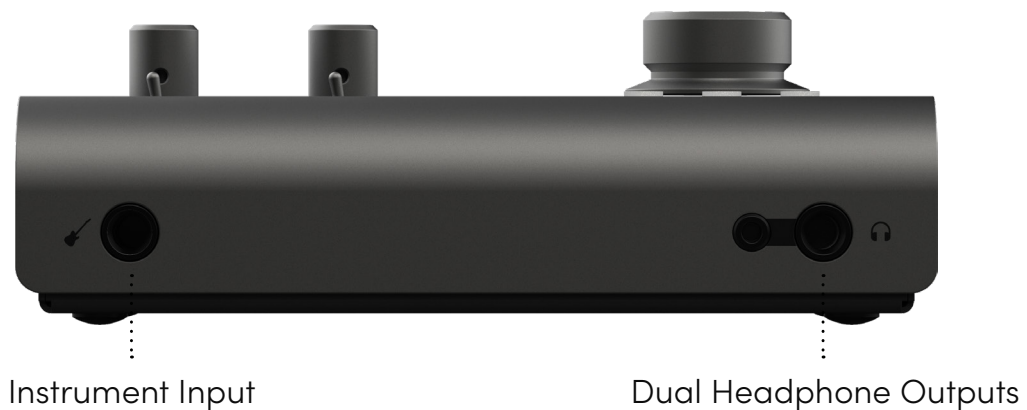
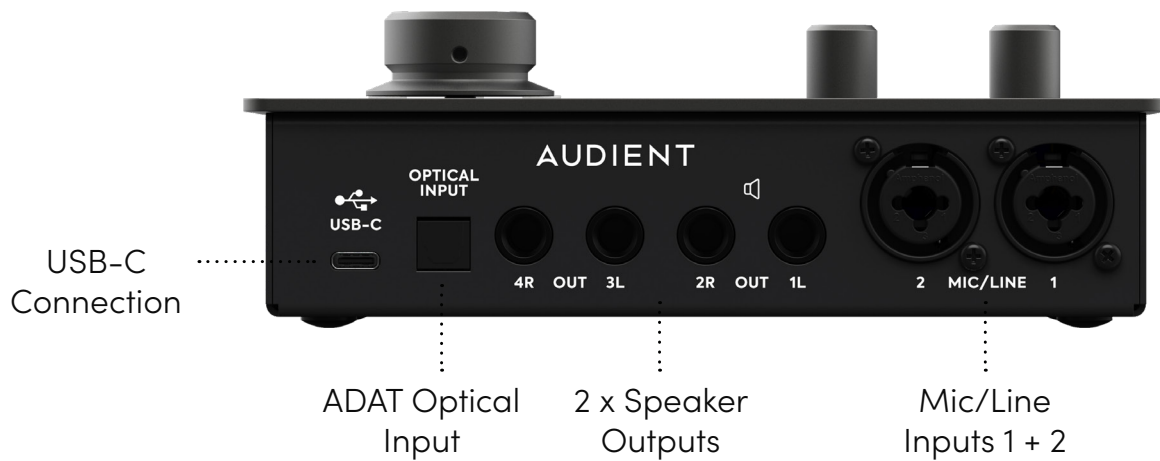
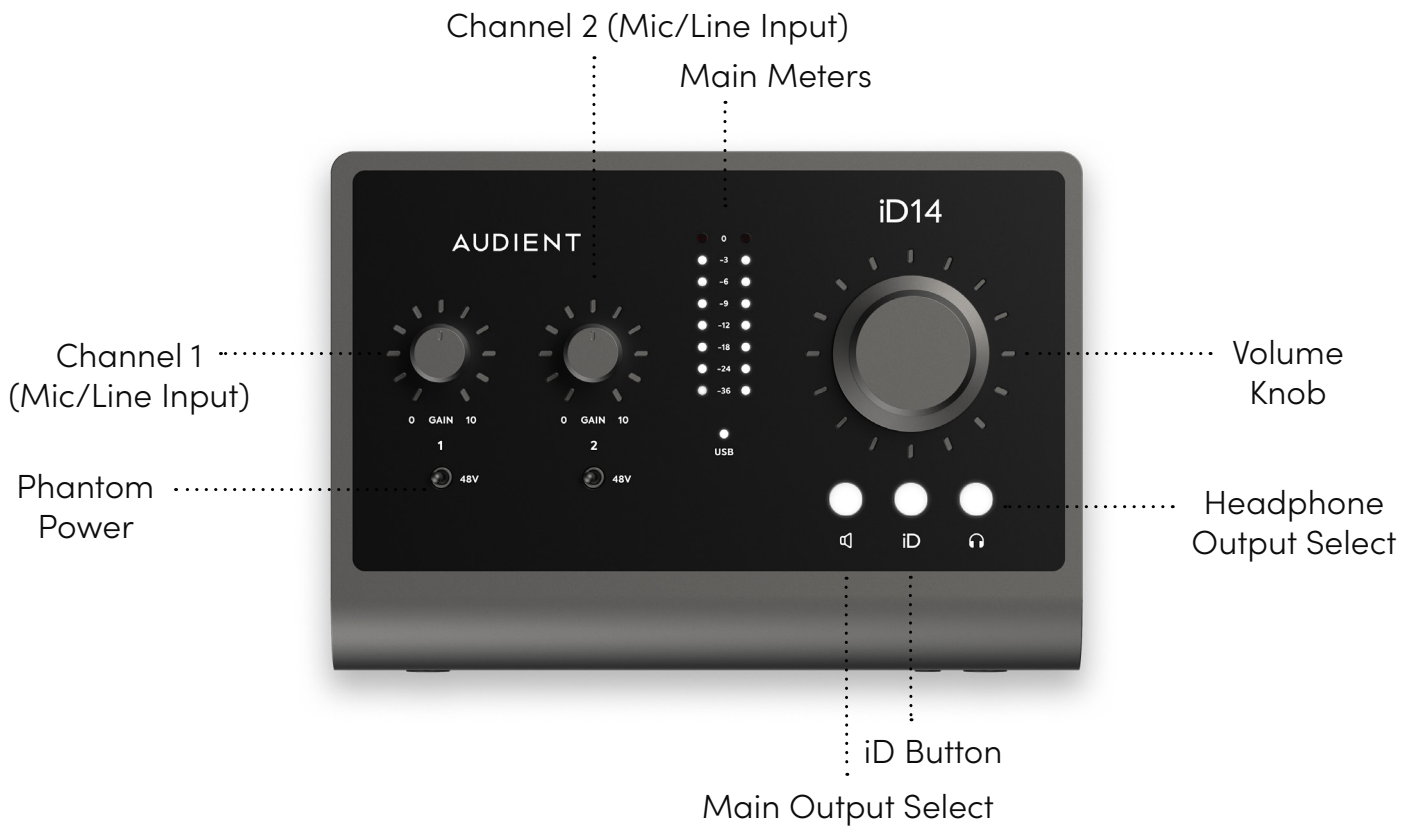
- 2 x Audient Console Mic Pre's
- Class Leading Converters
- 1 x JFET Instrument Input
- 4 x Line Outputs
- Dual Headphone Outputs
- ADAT Input for Expandability
- Ultra Low Latency Software Mixer
- Advanced Monitor Control
- Scrollcontrol
- True Phantom Power over USB
- USB3.0 Bus Powered
- All Metal Design
- Free Software + Plugins



# Contents

<b>iD14 Overview</b>	4	<b>Daw Setups</b>	37
<b>Safety Information</b>	5	Pro Tools Setup	38
<b>Declaration of Conformities</b>	7	Logic Pro Setup	39
	8	Cubase/Nuendo Setup	41
Mac Installation	9	Ableton Setup	42
Windows Installation	11	<b>Troubleshooting &amp; FAQ</b>	43
iD App & Firmware Update	13	<b>Technical Specifications</b>	46
<b>Hardware Features:</b>	14	<b>Dimensions</b>	47
Microphone & Line Input	15	<b>Warranty &amp; Contact</b>	48
Instrument Input	16	<b>Service</b>	49
Headphone Output	16	<b>Glossary</b>	50
Digital Inputs	17		
Loudspeaker Outputs	18		
Monitor Control	18		
Metering	19		
Kensington Lock	19		
<b>iD Mixer Application:</b>	20		
Input Channel Types	21		
Channel Features	23		
Mastering Section Features	24		
System Panel Features	27		
Setting Up & Using Talkback	30		
Save & Load Mixer Presets	31		
Menu/Task Bar Icon	32		
Audio Loop-back	34		
Keyboard Shortcuts	36		

# iD14 Overview



# Safety Information

## Important Safety Instructions

Please read all of these instructions and save them for later reference before connecting the USB and powering up iD14.

The iD14 itself does not operate with any high voltage mains supply inside the unit but appropriate safety measures should still be adhered to regarding the USB supply.

[audient.com/support](http://audient.com/support)

Consult a qualified technician if you suspect difficulties. Do not attempt to tamper with the power supply or mains voltages - **HAZARDOUS TO HEALTH**. Ensure that the appropriate international pin adapter is fitted to the power supply before insertion into the mains socket.

## WARNING!

To reduce risk of fire or electrical shock, **DO NOT** expose this apparatus to rain or moisture.

No user serviceable parts inside.  
Please refer servicing to qualified service personnel.

# Safety Information

## Important Safety Instructions

1. Read these instructions
2. Keep these instructions
3. Heed all warnings
4. Follow all instructions
5. Do not use this equipment near water
6. Clean only with dry cloth
7. Do not install near any heat sources such as radiators, heat registers, stoves, or other equipment (including amplifiers) that produce heat
8. Do not defeat the safety purpose of the polarized or grounding-type plug. A polarized plug has two blades with one wider than the other. A grounding type plug has two blades and a third grounding prong. The wide blade or the third prong are provided for your safety. If the provided plug does not fit into your outlet, consult an electrician for replacement of the obsolete outlet
9. Protect power cords from being walked on or pinched particularly at plugs, convenience receptacles, and the point where they exit from the equipment
10. Only use attachments/accessories specified by the manufacturer
11. Unplug this equipment during lightning storms or when unused for long periods of time
12. Refer all servicing to qualified service personnel. Servicing is required when the equipment has been damaged in any way, such as power supply cord or plug is damaged, liquid has been spilled or objects have fallen into the equipment, the equipment has been exposed to rain or moisture, does not operate normally, or has been dropped
13. For products that are a mains powered device: The equipment shall not be exposed to dripping or splashing and no objects filled with liquids (such as vases) shall be placed on the equipment

# Declaration of Conformities

## FCC Part 15B

This apparatus has been tested and found to comply with the limits of a class-A digital device, pursuant to Part 15B of the FCC Rules. These limits are designed to provide reasonable protection against harmful interference in a residential installation. This equipment generates, uses and can radiate radio frequency energy and, if not installed and used in accordance with the instructions, may cause harmful interference to radio communications. If this equipment does cause harmful interference to radio or television reception, which can be determined by turning the equipment off and on, the user is encouraged to try to correct the interference by one or more of the following measures:

1. Re-orient or relocate the receiving antenna
2. Increase the separation between the equipment and receiver
3. Connect the equipment into an outlet on a different circuit from that to which the receiver is connected
4. Consult the dealer or an experienced radio/TV technician for help



We, Audient Ltd, Aspect House, Herriard, Hampshire, RG25 2PN, UK, 01256 381944, declare under our sole responsibility that the product iD14 complies with Part 15 of FCC Rules.

Operation is subject to the following two conditions:

1. This device may not cause harmful interference,
2. This device must accept any interference received, including interference that may cause undesired operation



We, Audient Ltd, declare that the product, the iD14, to which this declaration relates, is in material conformity with the appropriate CE standards and directives for an audio product designed for consumer use.



Audient Ltd has conformed where applicable, to the European Union's Directive 2002/95/EC on Restrictions of Hazardous Substances (RoHS) as well as the following sections of California law which refer to RoHS, namely sections 25214.10, 25214.10.2, and 58012, Health and Safety Code; Section 42475.2, Public Resources

# Installation



# Mac Installation

## System Requirements

macOS 10.11.6 (El Capitan) or later  
Mac: Intel or Apple Silicon CPU,  
1GB RAM Minimum

## 1. Download the latest iD Software

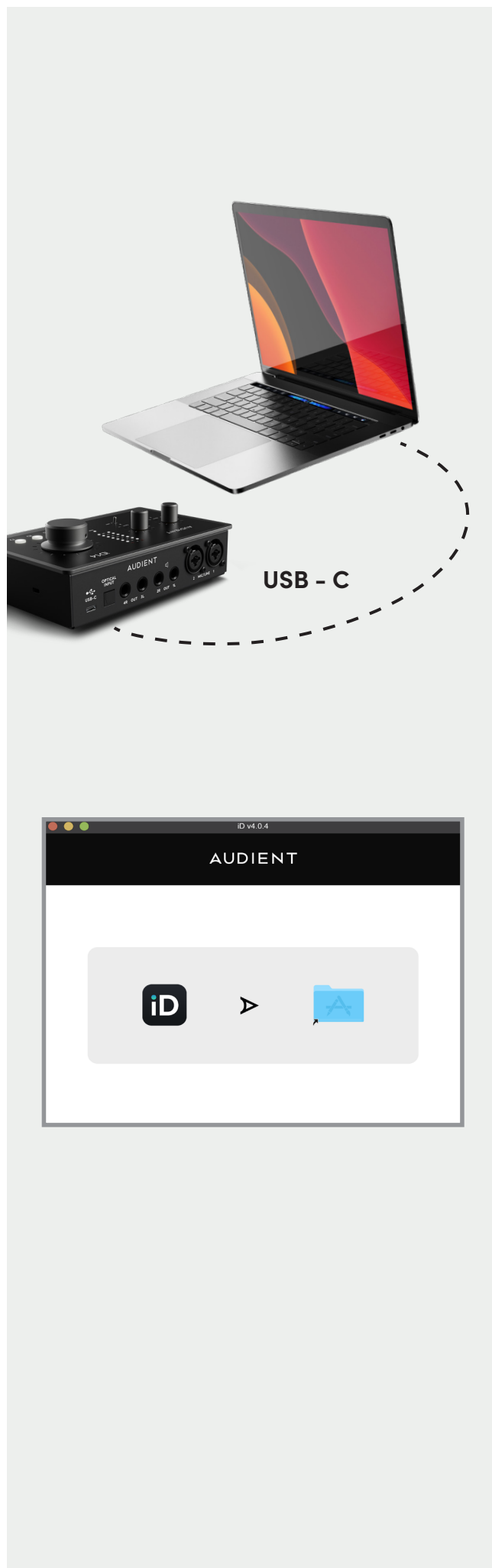
Head to our website for the latest version of our iD Mixer:

[audient.com/products/downloads/iD14](https://audient.com/products/downloads/iD14)

Drag the downloaded app into your application folder to install it.

## 2. Connect iD14

Using the USB cable provided, connect iD14 to your computer's USB port.



# Mac Installation

## 3. Status LED

Once connected to your computer and powered on, the white USB LED on iD14 will illuminate.



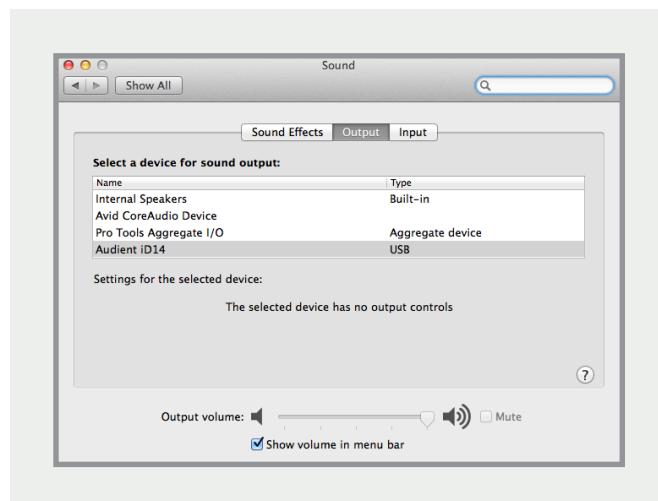
If at any time the status LED turns off during normal operation please check all connections and if further problems develop please contact Audient support.

## 4. Double Checking Connectivity

To ensure iD14 has been detected by your computer and correct clocking sources are set-up, navigate to:

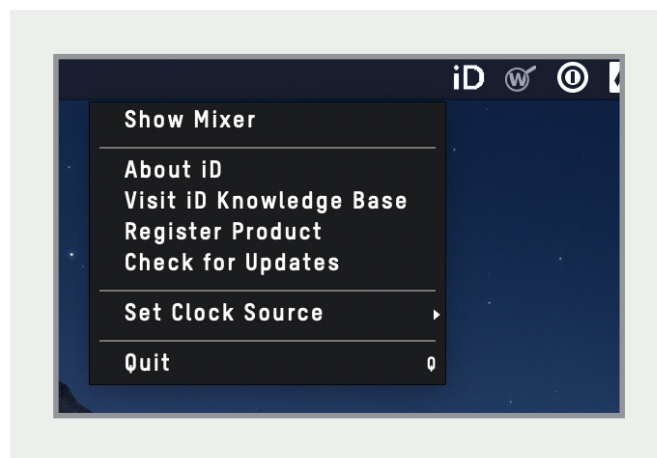
**Macintosh HD > Applications > System Preferences**

Check that iD14 is set as your i/o device. It's recommended to disable system sounds.



## 5. Open the iD Mixer

Run the iD software. It will appear as an icon in the Menu bar of MacOS. Click on this and select "Open Mixer Software".



# Windows Installation

## Windows System Requirements:

- Windows 10 or later (32 or 64 bit)
- Intel Core 2 @ 1.6 GHz, or AMD equivalent
- 1 GB RAM Minimum

## 1. Download the iD14 Software

Head to our website for the latest version of our iD Windows Installer:

[audient.com/products/downloads/iD14](https://audient.com/products/downloads/iD14)

## 2. Connect iD14

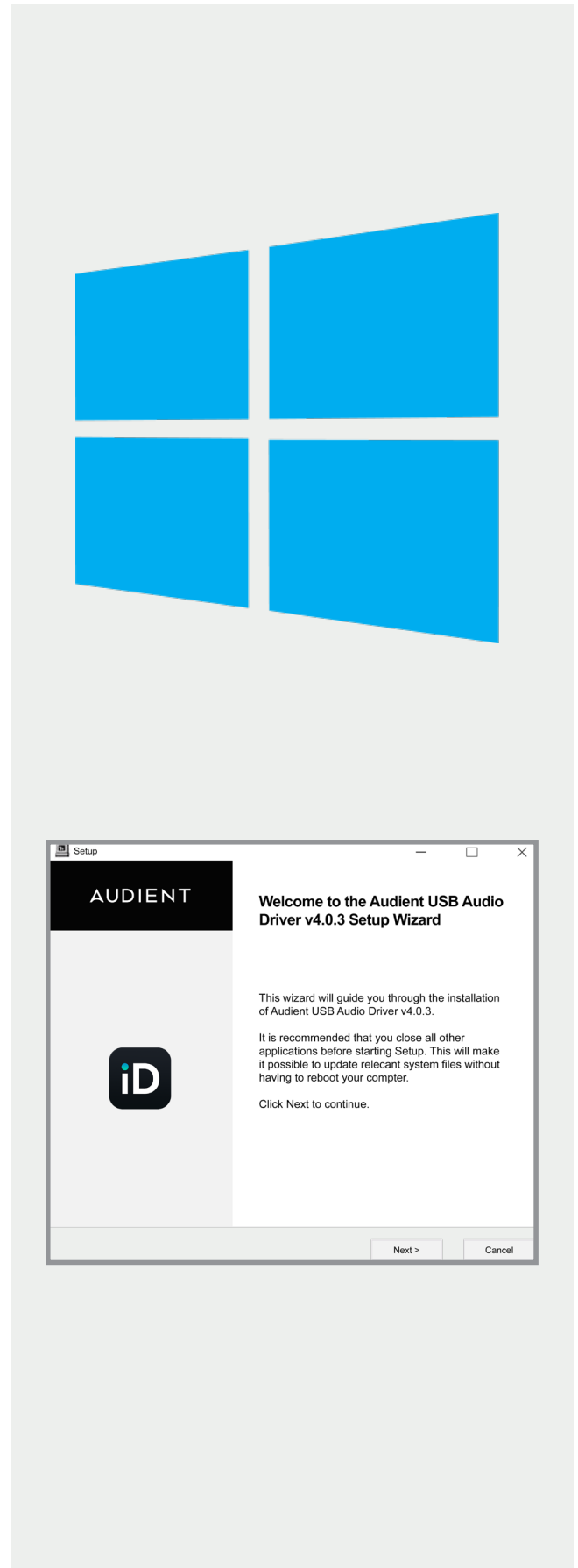
Using the USB cable provided, connect iD14 to your computer's USB port.

## 3. Run iD Mixer Setup

Double click on the installer to run the iD mixer setup and follow the onscreen instructions.

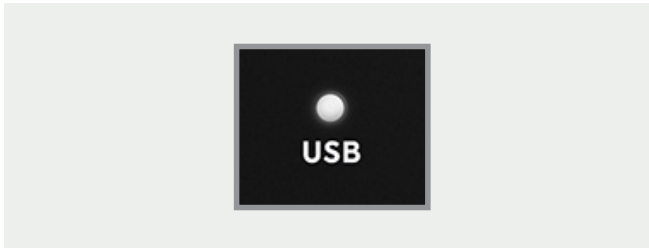
## 4. Reboot PC

Reboot your PC to make sure that all the drivers have been applied.



# Windows Installation

## 4. Check Connectivity



The USB status LED will illuminate as soon as iD14 has achieved stable communication and should remain solidly lit during operation of the unit until power down.

To double check the connection, go to PC sound settings by following:

**PC Settings > Control Panel > Hardware and Sound > Sound**

Here you can see whether iD14 is visible to the PC and you can make it the computers default sound device by pressing 'Set Default'.

### iD Icon

Once installed, the iD icon can be found in the Windows system tray (it may be in the hidden icons area):

- Double-click to open iD14 mixer window when iD14 is connected
- Right-click to quit or change sample rate and buffer size.



For mixing, buffer size of 256 should be perfect. For tracking, experiment with lower buffer size values. How powerful your computer is, and how processor hungry your project is, will affect how low you can get the buffer size settings before you get audio instability.

# Mixer App & Firmware Update

## Launch the iD Mixer Application

Launch the iD14 mixer application by finding it in the following folder:

**Macintosh HD > Applications > iD Start > All Programs > Audient > iD**

For more information on the mixer application feature set, please refer to **page 21** of this manual onwards.



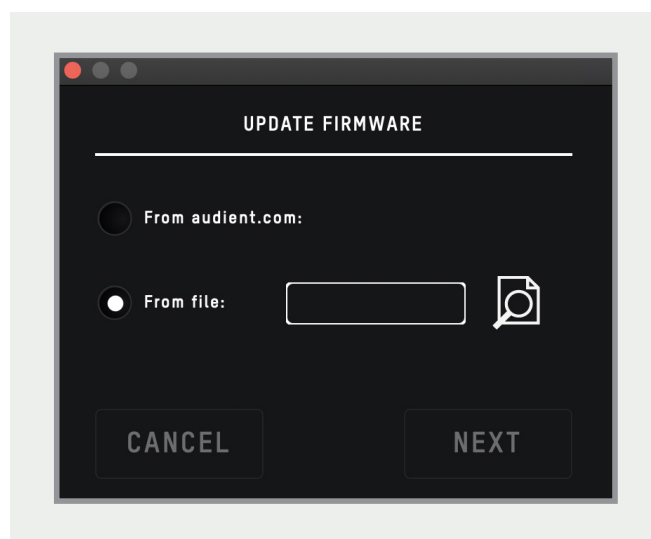
## Check for Firmware Updates

If your computer is connected to the internet, the iD app will check for firmware updates whenever a unit is connected. If there is a firmware update available then the iD app will notify you.

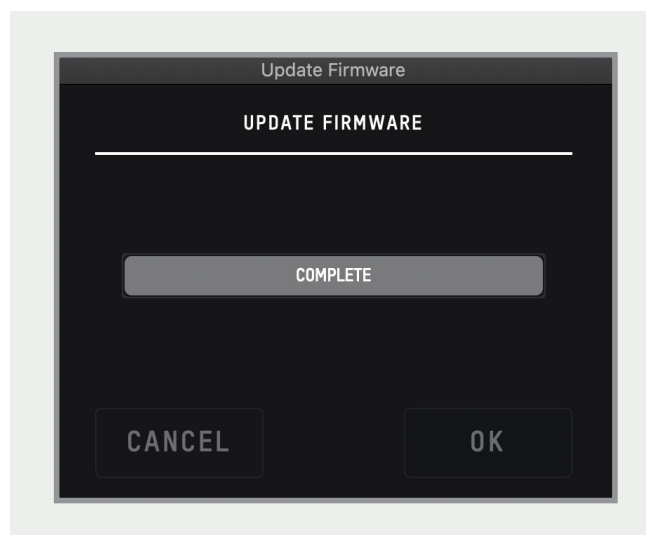
You can manually check for updates by going to the Help menu and selecting 'Check for Updates'. It will notify you if you're on the latest version of firmware.

## Firmware Update

When there is a firmware update, you can select 'From audient.com' to download the latest version automatically (or select 'From file' to install a local firmware file).



The latest version number will be retrieved from our servers and will be displayed (as shown above). Press next to continue with the firmware update. Press 'update' to install it.



# Hardware Features

## Microphone Preamplifiers & Line Inputs

iD14 features two classic Audient Console microphone preamplifiers. These preamps are based on designs from Audient's classic consoles and are the same that are used across our entire 'iD interface range'.

The design features discrete Class-A circuitry providing exceedingly low distortion and noise performance. From a sonic point of view, iD14 is fast, open and detailed.

Amphenol™ XLR/TRS Jack combi-connectors provide microphone and line inputs. The line inputs are padded through the microphone preamplifiers.



The microphone preamplifiers feature:

- 58 dB of clean gain
- 48v ( $\pm 4V$ ) phantom power rated at 10mA/channel
- > 2.8k $\Omega$  input impedance which provides a punchy tone from any microphone transducer type

Extra features such as a +10dB boost and polarity reverse can be accessed via the iD App (**See page 23**).



## Instrument Input

iD14 employs a discrete class-a JFET instrument (D.I) input on channel one which is easily accessible on the front of the unit.

The JFET circuitry adds a tiny bit of colour and distortion to the signal, making it sound great on guitars and basses.

Plugging in a TS (tip-sleeve unbalanced) jack will override the mic signal and turn channel one into a fully fledged, fantastic sounding instrument input with access to the polarity reverse (useful for phase alignment between a mic and D.I) and the +10dB boost for quiet inputs.



## Headphone Output

iD14 features an independent high-current headphone amplifier. This can be accessed using both the 3.5mm and 6.35mm sockets found on the front of the unit. The same audio signal comes out of both connectors simultaneously, so it does not matter which you plug your headphones into. You can also plug in two pairs at the same time.

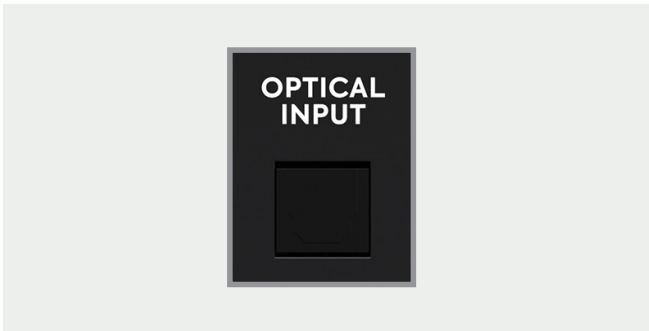


The headphone output can comfortably drive a wide range of headphone impedances meaning that you will get great sounding audio no matter what model of headphones you have.



## Digital Inputs

iD14 features an optical input connection. This can be set to operate as stereo optical S/PDIF or 8-channel ADAT (SMUX) via the System Panel in the iD mixer application. Both formats will operate at up to 96kHz sample rate.



Running in S/PDIF mode allows 2 channels of audio up to 96kHz.

Running in ADAT mode, the optical input provides a great way to expand to 10 inputs for recording via an external mic preamp such as an **Audient ASP800**. When using 88.2kHz and 96kHz as a sample rate, you only have access to 4 channels of digital input (due to the way ADAT works at higher sample rates).

For more information about system clocking please refer to **pages 28 onwards**.

## Speaker Outputs

iD14 has two pairs of stereo speaker outputs on the back panel in the form of balanced TRS jack connectors. The outputs are impedance balanced using the same topology as our flagship console, the **ASP8024**.

The outputs are fed from high quality DACs (Digital to Analogue Convertors) sending clean, linear audio to your speakers, perfect for critical listening.



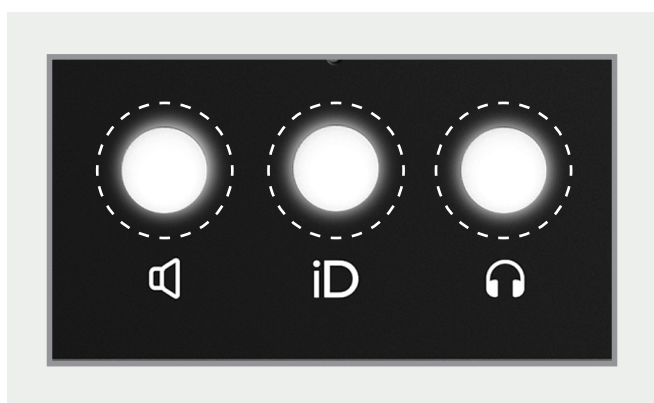
You can use these outputs for more than just speakers. A good example of this is if you want to use a dedicated headphone amplifier for multiple musicians, you can connect this up to one or more of these outputs, This is configured in the iD mixer software.

## Monitor Control

iD14 provides excellent monitor control functionality using the large aluminium encoder and the encoder buttons.

As such, it is possible to control main loudspeaker and headphone volumes with a perfectly matched stereo volume control on the main unit.

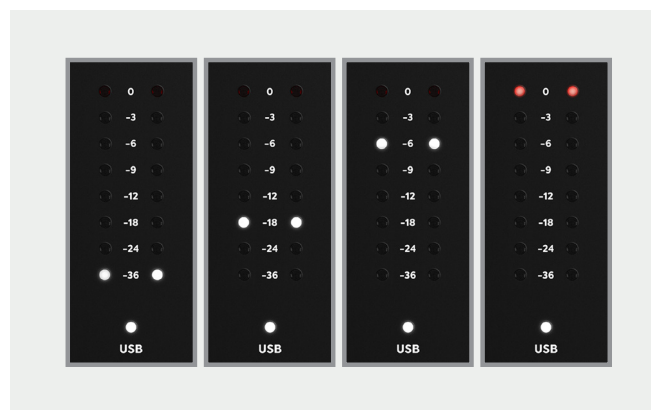
The three encoder mode buttons allow you to change what the encoder controls. The button that is selected will be illuminated.



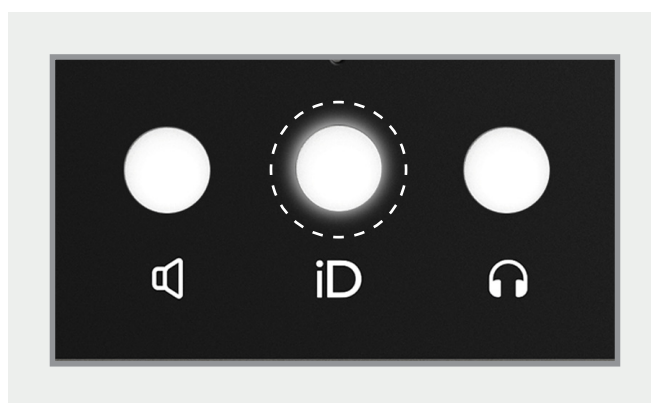
## Loudspeaker and Headphone Buttons

Pressing the speaker or headphone button allows the encoder to control the level of the selected output. The volume of the output is displayed on the meter LEDs and a press of the encoder will mute the output.

When a selected output is muted, the corresponding encoder button will flash, repeatedly until unmuted.



## iD Button

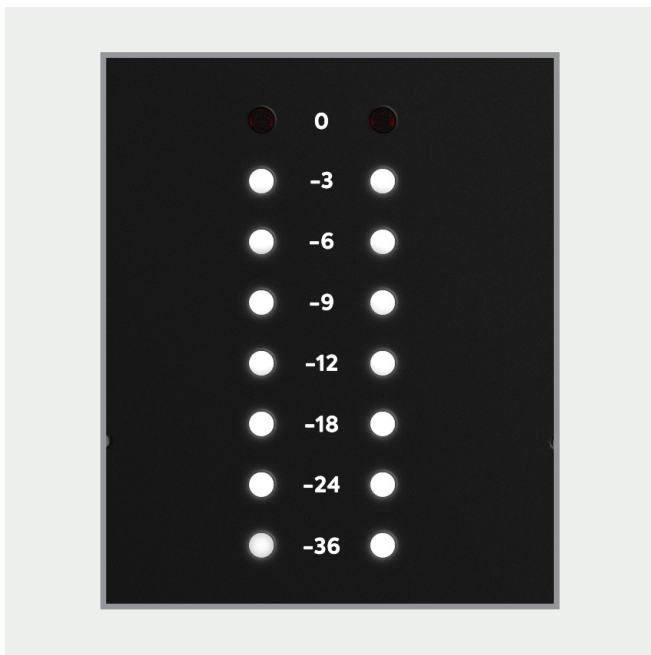


The iD button provides extra functionality in the form of an assignable function button, or it can be used to activate iD14's **ScrollControl** which turns the encoder into a virtual scroll wheel allowing you to control compatible parameters within your DAW or plugins.

When the iD button is set as a function button, the encoder will continue to control the output that was previously selected. The iD button is assigned in the iD app.

## Hardware Metering

The 8-segment hardware meters indicate playback level of the iD mixer app, so it is suggested that end users observe their DAW metering for input levels.



## Kensington Lock

For those who work in educational establishments or in situations where your equipment is public facing and subject to possible theft opportunities, we have provided a Kensington lock hole to enable you to protect your iD14.



## Status LED

The status LED indicates connection via USB to your computer. A solidly lit light means that there is stable communication between iD14 and your computer.



# iD Mixer App

## Input Channels – Channel Types

The iD mixer application features three types of input channels:

- **Mic Inputs**

These are the inputs where you will see the signal from the iD14's two analogue inputs.

- **Digital Inputs**

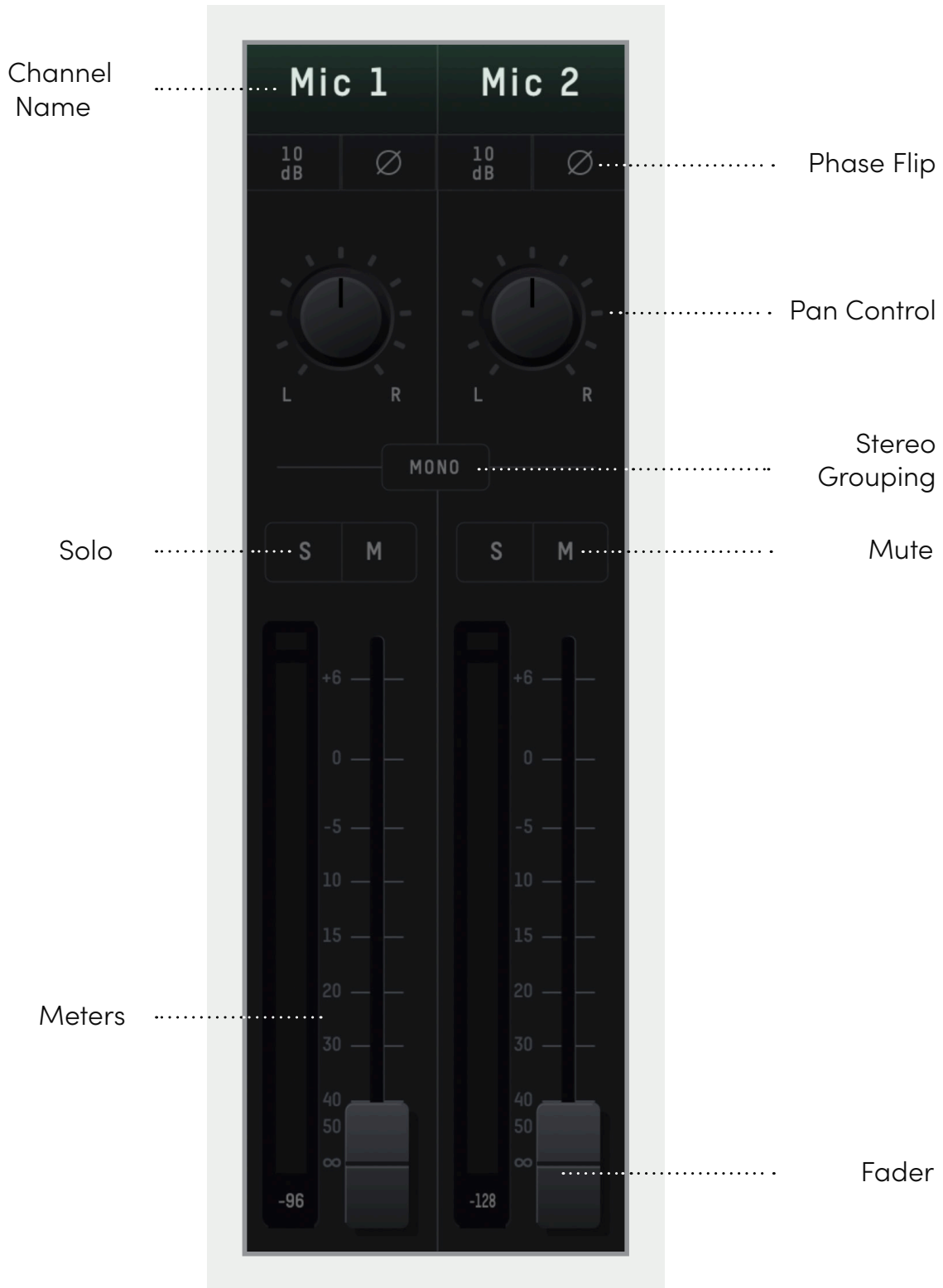
These are the inputs from the iD's optical inputs. The number of digital inputs present on the iD mixer application depends on the digital input type (S/PDIF or ADAT) and the sample rate being used.

- **Daw Returns**

These are the signals being played back from your DAW. The iD14 has 6 Daw Return Channels allowing you set up multiple cue mixes or sends to hardware outboard gear.

Using these three channel types, you can build up your main monitor mix and up to two additional cue mixes.

Its important to note that the iD mixer application only controls the monitoring of the iD14. Changes made to the iD mixer application won't affect the level present in your DAW or audio software.



## Channel Features

### Channel Name

By double clicking on the name of the channel you can rename it to help you organise your iD mixer application. You could name a channel 'Kick' or 'Snare' for example.

### Phase Flip

Inverts the polarity of the signal by 180° to stop phase cancellation. This is useful if you are micing the rear of a guitar amplifier or the underside of a snare drum.

### Pan Control

Allows you to send the audio to the left, to the right or anywhere between on your Main Monitor Mix or Cue Mixes.

### Stereo Grouping

Allows you to group two adjacent channels together into a stereo channel with a single fader controlling the level of both channels. When a channel is stereo grouped, the pans will automatically be set to far left and far right.

### +10dB Boost

Selecting this will boost the incoming signal by +10dB for recording quiet sources. This will also affect the audio being fed into your DAW.

### Solo

The Solo button mutes all other channels other than the one that is currently solo'd. Multiple channels can be solo'd at one time.

### Mute

The Mute button stops this channel from outputting audio whilst it is engaged.

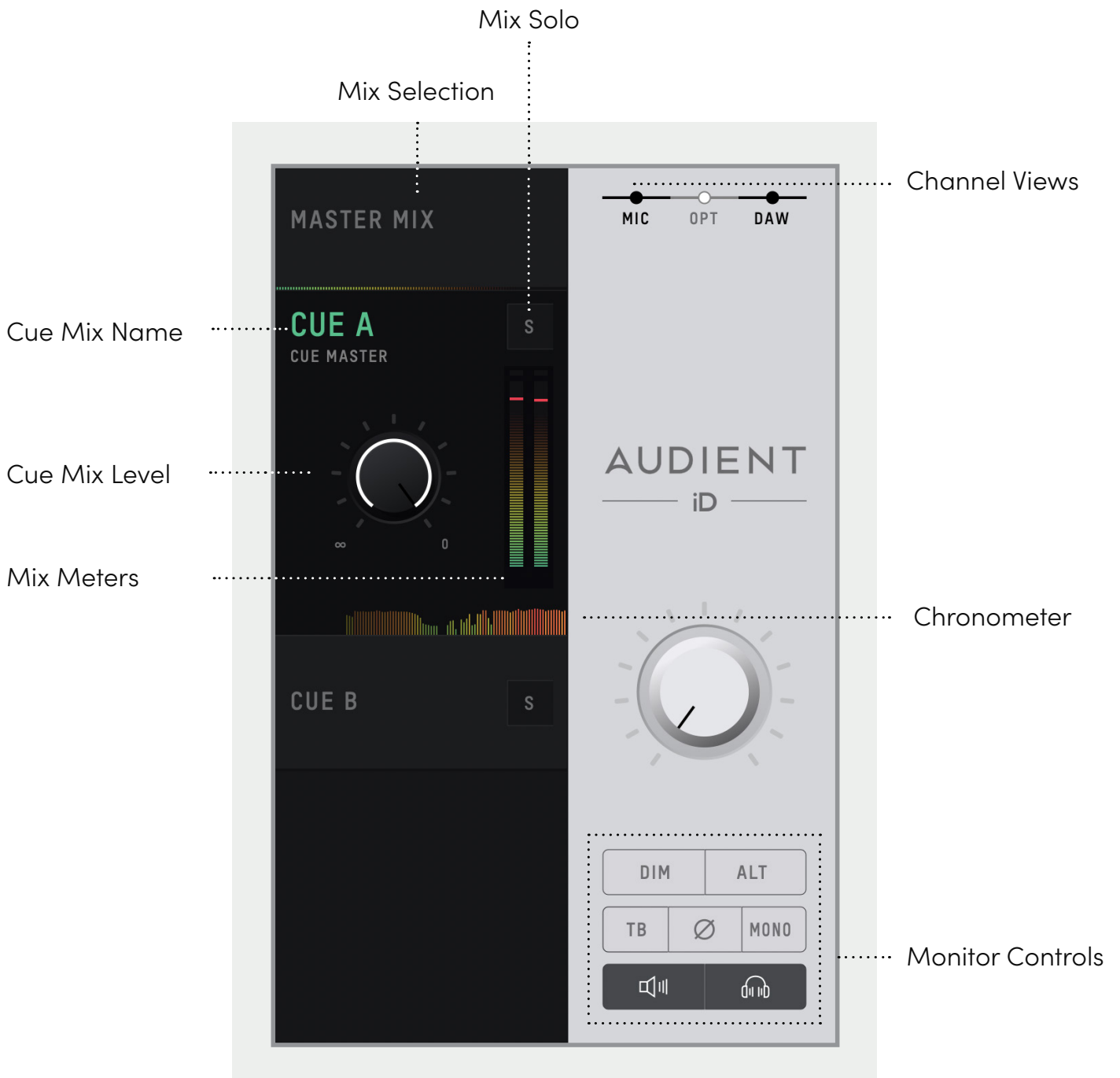
### Fader

The fader controls the amount of signal that is sent to currently selected mix. This can be set to anywhere between -inf dB to +6dB.

### Meter

The meter shows the current signal level in dBFS. Should the signal level exceed 0dBFS then the peak indicators will illuminate red to indicate a peak. The peak indicators can be turned off by clicking in them. You can also turn off all peak indicators using Alt + Click.

# Master Section Features





## Mix Selection

Clicking on one of mixes allows you to make changes to that mix. When a mix is selected, it expands to reveal additional controls for that mix.

## Cue Mix Name

Double clicking on a Cue Mixes name allows you to rename the Cue Mix. If for example you were creating mixes for four separate band members, you could name them 'Drummer', 'Guitarist', 'Bassist'... etc.

## Mix Solo

The Solo button allows you to audition each of the Cue mixes through your monitors.

## Mix level

The Mix level allows you to control the overall level of the Cue mix that is sent to the outputs.

## Mix Meters

The Mix meters show the master signal level of the selected mix.

## Chronometer

The Chronometer allows you to see not only the current signal level but also the signal level from a few seconds previously.

This can be great to track down a sudden loud transient on a particular cue mix or to monitor the change in level over time as you make changes to a mix.

## Channel Views

These three buttons allow you control which of the three channel types are shown in the mixer. If for example you weren't using the digital inputs for a particular project, you can simply hide the optical channels by clicking on the OPT control.

## Monitor Controls

These six buttons control various aspects of the iD14's monitor controller capability. The function of each control can be found below:

- **TB (Talkback)**

The talkback button switches talkback on and off. More information regarding talkback and its various settings can be found in the 'System Panel' section of this manual.

- **∅ (Phase Flip)**

Pressing this switch flips the phase of one side of the stereo field. Used in conjunction with the mono button, this can be a great way to remove centred elements from a mix in order to hear the hidden elements of a mix.

- **Mono**

The mono button sums the stereo outputs down to mono. This can be used to quickly check the mono compatibility of your mix to make sure it'll sound great almost anywhere!

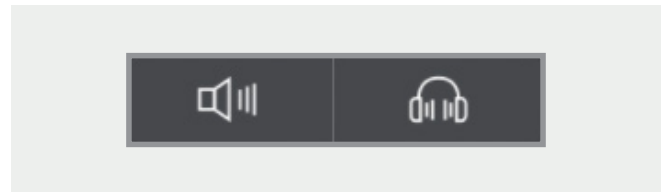
- **Alt**

Alt allows you to quickly switch your monitor path to a secondary set of monitors to let you check how your mix translates on various speakers.

You can select which outputs the 'ALT' monitor control flips to in the System Panel.

- **Dim**

Reduces the output level by a preset amount which can be great if you get a call or need to quickly chat to someone during a session.



## Monitor and Headphone Mute

This allows you to mute either the monitor outputs or the Headphone outputs from the software. A cross will show through the icon to indicate that an output is muted.

# System Panel Features

The screenshot shows the 'SYSTEM PANEL' with a 'ROUTING' window. On the left, there are controls for 'DIGITAL IN' (ADAT, S/PDIF), 'PREFERRED CLOCK SOURCE' (INTERN, DIG 1), 'MONO MODE' (L, C, R), 'ID MODE' (ScrollControl), and 'TRIM' (DIM, ALT). The main area is split into 'ANALOGUE OUTPUTS' and 'TALKBACK'. Under 'ANALOGUE OUTPUTS', there are three rows of controls for '1 + 2', '3 + 4', and '5 + 6', each with a 'STEREO' indicator and a volume knob. Under 'TALKBACK', there are five columns: 'MAIN MIX', 'ALT SPK', 'CUE A', 'CUE B', and 'DAW THRU', each with a volume knob. On the right, there are callouts for 'Output Routing Selection' and 'Routing Matrix'.

Talkback Source

Input Source

The left screenshot shows the 'TALKBACK' tab selected. It has a 'SOURCE' section with 'INTERNAL' and 'EXTERNAL' radio buttons, and an 'EXTERNAL SOURCE AUDIO SETTINGS' section with a 'DEVICE' dropdown menu set to 'Built-in Microphone'. The right screenshot shows the 'INPUT SOURCE' tab selected. It has a 'SOURCE' section with 'INTERNAL' and 'EXTERNAL' radio buttons, and an 'INPUT SOURCE' dropdown menu set to 'None'.

Talkback Device

## Digital Input Format

Allows you to select whether the optical input uses ADAT or S/PDIF digital format.

## Preferred Clock Source

The Clock source can be selected from either the internal clock or the optical input. More information about choosing a clock source can be found in the clocking section of this manual.

When using an external clock source the indicator beside the selector shows the current status of the clock on that input.

- **Red** - No clock signal detected on input
- **Amber** - A clock signal is detected but at a different sample rate to iD14
- **Green** - A clock signal is detected and is at the correct sample rate.

For an external clock source to be working correctly you would want the indicator to be green. If the indicator isn't green, iD14 will default back to the internal clock until it detects a valid clock input.

## Mono Mode

When the iD14's Mono feature is engaged this option controls whether the mono signal is sent to the left, right or both monitors.

## Dim Level

When the iD14's dim function is engaged, this control defines how much the level is reduced by.

## Alt Speaker Level

This control defines the level drop/boost when the iD14 is switched to ALT speaker mode. This is used to balance levels between different speaker brands.

## Output Routing Selection

Opens the routing matrix for either the Analogue Outputs, Digital Output 1 or the Talkback channel.

## iD Mode

Controls whether the iD button engaged Scroll Control or one of the Monitoring functions.

## Routing Matrix

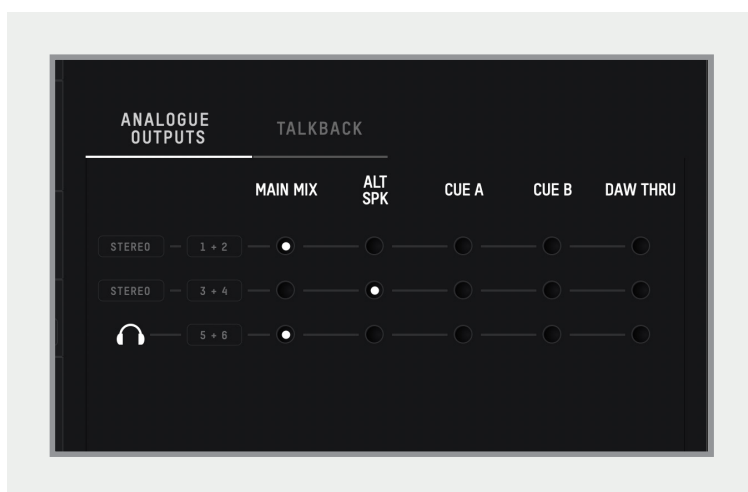
The Routing Matrix allows you to control the audio source for each of the iD14's outputs from the following options:

- Main Mix - This takes signal from the Master Mix of the iD mixer. This is what is usually used for most standard playback.
- Alt - This takes signal from the Master Mix but only when the Alt speaker mode is active.
- Cue A & B - This takes signal from the two cue mixes which can be created using the iD mixer. Please note that the hardware volume control does not affect these mixes and the Cue's have separate trims which can be adjusted when the cue mix is selected in the Main Mixer Window.

DAW THRU - This allows you to route to outputs exactly as they would appear in your DAW. For example, if you set Analogue out 1+2 to DAW THRU, anything your DAW sends out to Outputs 1+2 will be sent directly to Analogue outputs 1+2.

Please note that in DAW THRU, the channel in question will bypass any volume control and audio will be passed at full scale. If this output is sent to a set of monitors without inline attenuation, this may be very loud.

The only exception to this is the headphone outputs where the volume control will still function.



## Talkback Source

The Talkback source allows the talkback input to be taken from one of the iD14's internal inputs or from a device connected to the host computer (such as a built-in microphone or USB microphone).

When you select an input as your Talkback channel, the channel for this channel in the iD mixer will be changed to a talkback channel which will have a TB button in the centre.

If using an external device, the talkback signal will appear on channel **DAW 6**.

Faders will only appear for these channels on the Cue mixes, not on the Main Mix.

## Talkback Device

If an external device is selected then this allows you to select which connected device is used.



## Saving & Loading Mixer Presets

To allow you to quickly setup your iD mixer during a session you can save and quickly load various presets. This is great if you are moving between recording scenarios quite often.

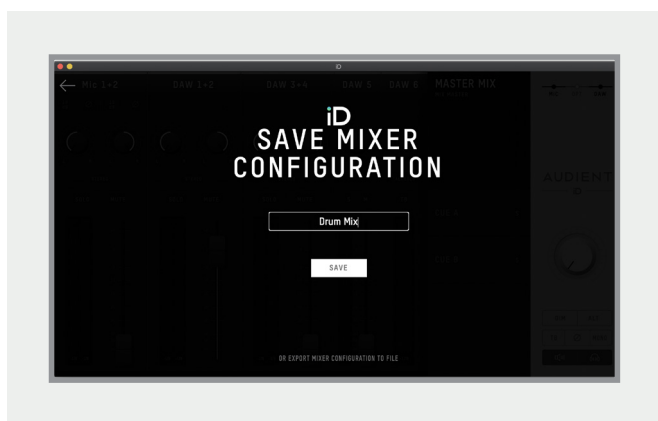
Mixer presets can be saved and loaded in two ways:

- Using the File menu and selecting either Save or Open.
- Using standard keyboard shortcuts :

Save: Mac - **Cmd + S**  
Windows - **Ctrl + S**  
Load: Mac - **Cmd+ O**  
Windows - **Ctrl + O**

### Saving a Preset

To save a preset, simply setup your mixer the way that you'd like to save. Then select **File > Save** as explained above. The mixer window should then show the Save dialog.



Simply enter the name of your preset and press save.

It is also possible to export your preset files in order to send them to friends or to simply save them within your DAW session files for easy recall later on. To do this, select **Export Mixer Configuration** at the base of the Save screen.

### Loading a Mixer Configuration

To load a previously saved preset, select **File > Open** to bring up the Load screen.



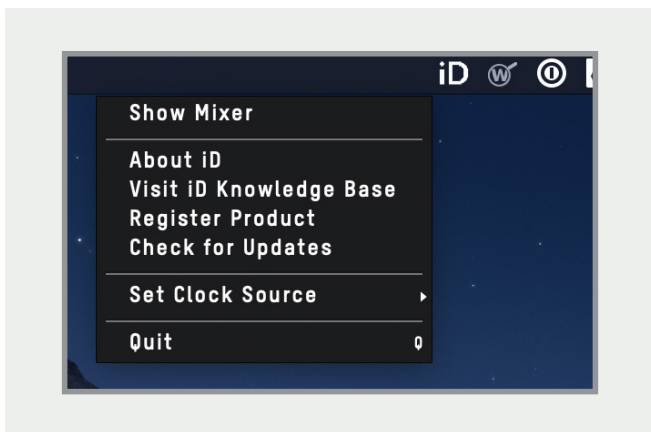
The previously saved configuration will appear in a list. Select the configuration you wish to use and click Load.

You can also open a mixer configuration directly from a file by selecting **Load From File**.

## Menu/Task Bar Icons

### MacOS

On MacOS, the iD icon appears in the menu bar in the top right hand corner of the screen. This gives you quick access to various functions of the iD14.



### Quit

Fully closes the iD mixer application.

### About iD

Displays information regarding the current version of the iD mixer application.

### Visit iD Knowledge Base

Opens a browser window for the Audient Helpdesk with helpful articles and FAQ's.

### Set Clock Source

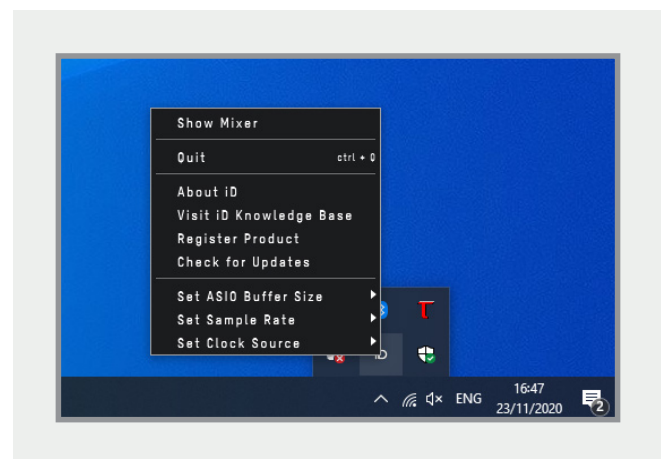
Allows you to quickly adjust the clock source between the internal and optical clocks

## Check for Updates

The iD app will check with the Audient update server for any available firmware updates for iD14.

## Windows

The Windows taskbar Icon has all the options of the MacOS menu bar icon but also includes some Windows Specific options.



### Set Sample Rate

Sets the operating sample rate of iD14. 44.1, 48, 88.2 and 96kHz are the four options available.

### Set ASIO Buffer Size

Sets the buffer size of the iD14 between 16 and 4096 samples. Higher sizes will take processing load off your computer but will cause increased latency.

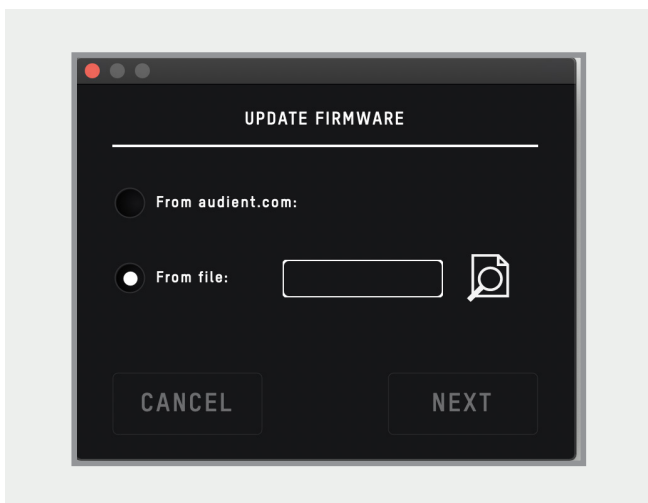


## Firmware Update

Occasionally, Audient will release a firmware update for the iD14 in order to address bugs, improve compatibility and add new features. Therefore you may wish to check occasionally for any updates.

This can be done by navigating to the **Window** menu and selecting **Check for Updates**.

The iD mixer application will then check with our update server if any updates for the iD14 are currently available. If there are then you will be prompted to install them onto the iD14.



If you then click next, you'll be prompted to stop any playback through the iD14. Click Update and the update will begin. The iD14 may turn off a number of times.

# Audio Loop-back

As part of the software mixer of iD14, you also have the ability to loop-back audio so you can record or stream audio from different applications on your computer. To give you additional flexibility the iD Mixer gives a number of sources for your loop-back audio which can be adjusted in the iD menu:



The sources are as follows:

**DAW 1+2** - Any audio being sent to outputs 1+2 of the iD14

**DAW 3+4** - Any audio being sent to outputs 3+4 of the iD14

**DAW 5+6** - Any audio being sent to outputs 5+6 of the iD14

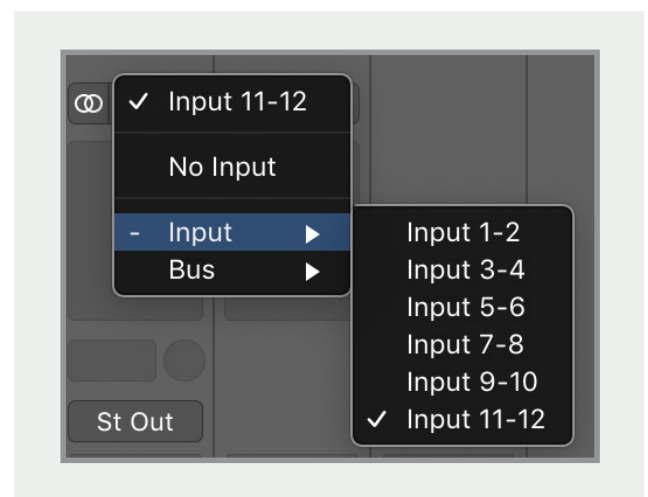
**Master Mix** - The audio mix created in the iD mixer on the Main Mix panel

**Cue A** - The audio mix created in the iD mixer on the CUE A panel

**Cue B** - The audio mix created in the iD mixer on the CUE B panel

## Using the Loop-back Mix

To record or stream your loop-back mix, simply select either Input 11+12 (Inputs 3-10 are preserved for the additional ADAT inputs) or Loop-back 1+2 in your audio software. The input name you will see is dependent on your DAW or audio software.



## Sending Audio to the Loop-back Outputs

Most DAW's and audio software will allow you to select your audio output as part of the audio preferences or in a mixer. Again, for details on how to do this, check the manual or documentation for your software.

However, for applications that don't give you this option you can simply adjust the system settings.

## MacOS

To adjust your output channels, you'll need to go to the Audio MIDI setup utility. This can be found by going to:

**Finder > Applications > Utilities > Audio MIDI Setup**

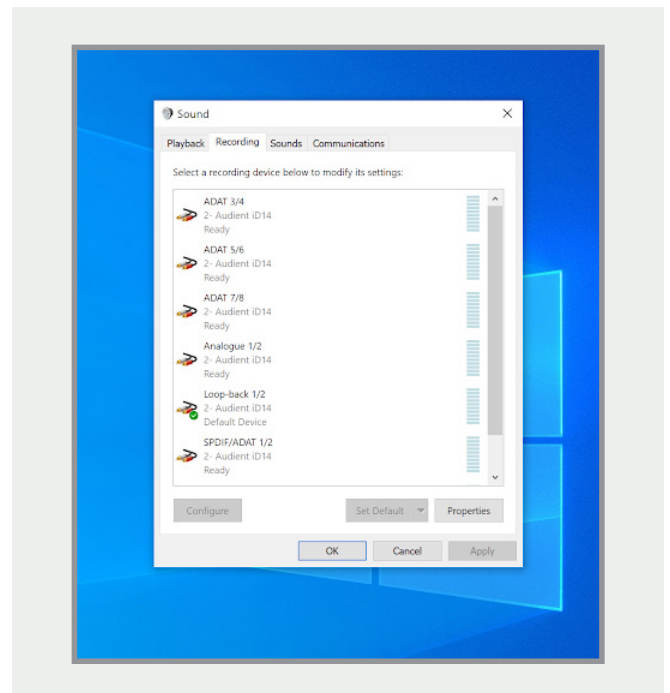
You should now see a list of audio devices currently connected to the Mac. Select the iD14, go to the 'Output' panel and click "Configure Speakers". Now set the Outputs to Loop-back 1 and Loop-back 2.



Click 'Apply' and all audio on your computer will now be sent to these channels in the iD Mixer allowing you to set up a loop-back mix that is separate to your Main Output, which you would continue to use for monitoring.

## Windows

On Windows you can simply change your output channel by going to the 'Sound' settings found in the 'Control Panel'. Go to the 'Playback' device list and select 'Output 3+4' or 'Output 5+6' as your Output Device.



# Keyboard Shortcuts

## Keyboard Shortcut Index

To allow you to find all shortcuts for the mixer application in one place without having to go through each page of this manual please refer to this table:

Location	Mac	Windows	Description
Faders	Alt + Click	Alt + Click	Resets fader to unity gain (0 dB)
Pans	Alt + Click	Alt + Click	Resets pan pots to central position
Solos	Cmd + Click	Ctrl + Click	Clears all solos if clicking on a solo'd channel Overrides all other solos (for solo exclusive) if clicking on an unsolo'd channel
Meters	Alt + Click	Alt + Click	Clicking on peak hold indicator will clear all clip indicators
System Panel	Cmd + S	Ctrl + S	Save mixer configuration
	Cmd + O	Ctrl + O	Load mixer configuration
View Modes	Cmd + 1	Ctrl + 1	View Mic/Line Input
	Cmd + 2	Ctrl + 2	View Optical (Digital) Inputs
	Cmd + 3	Ctrl + 3	View DAW Mix Inputs
	Cmd + 4	Ctrl + 4	View System Panel

Please check the iD14 page online at [audient.com/products/iD14](https://audient.com/products/iD14) for the latest mixer application updates.

More shortcuts may be added without notification.

# DAW Setup

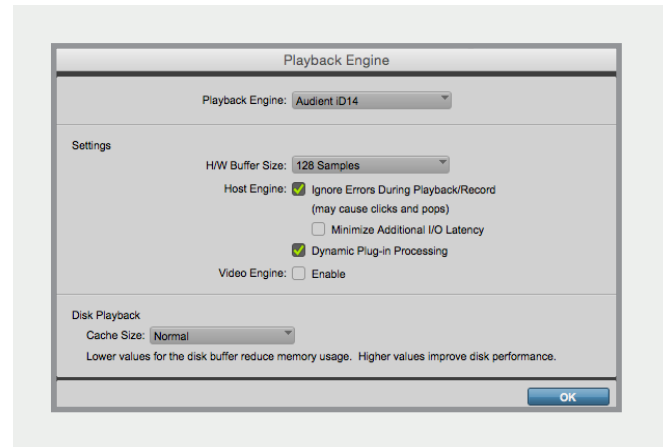


# Pro Tools Setup

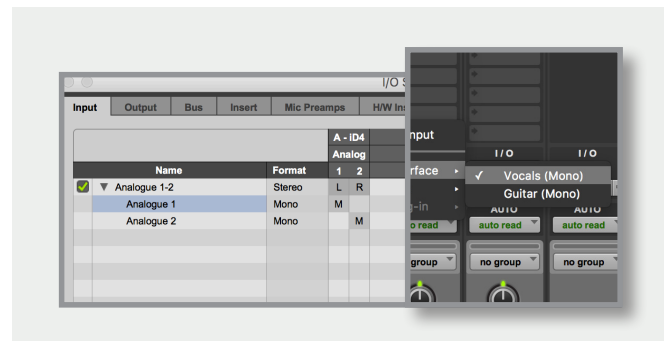
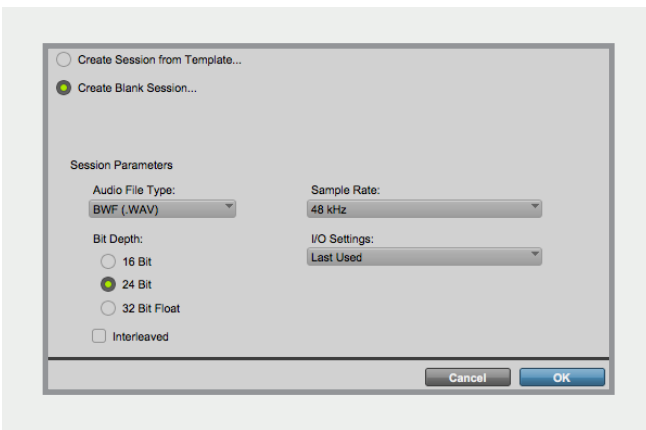
## Operation with Pro Tools

If using Windows, ensure that you have followed the installation instructions found on **page 11**.

With iD14 connected, launch Pro Tools and ensure that a new session is created at the desired sample rate. If you are using Windows, make sure that you have already set your Latency and Buffer Size settings in the iD System Tray before opening a project. Changing these mid session will result in Pro Tools needing to restart.



Go to **Setup > I/O...** to label your inputs and outputs and ensure that iD14 is correctly reporting 10-inputs and 6-outputs to and from Pro Tools.



## Playback Engine

Go to **Setup > Playback Engine...** and ensure that iD14 is set as the active playback device.



For more Pro Tools information consult your Avid user manuals & documentation.

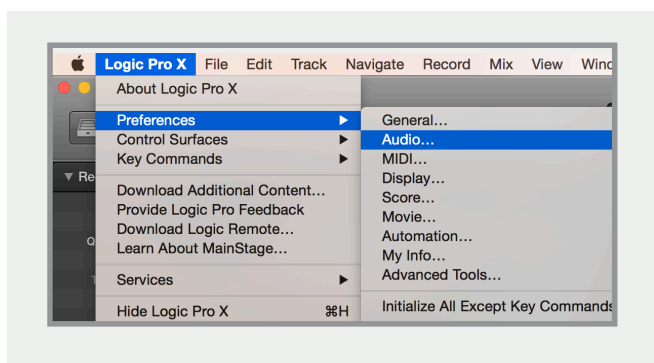


# Logic Pro Setup

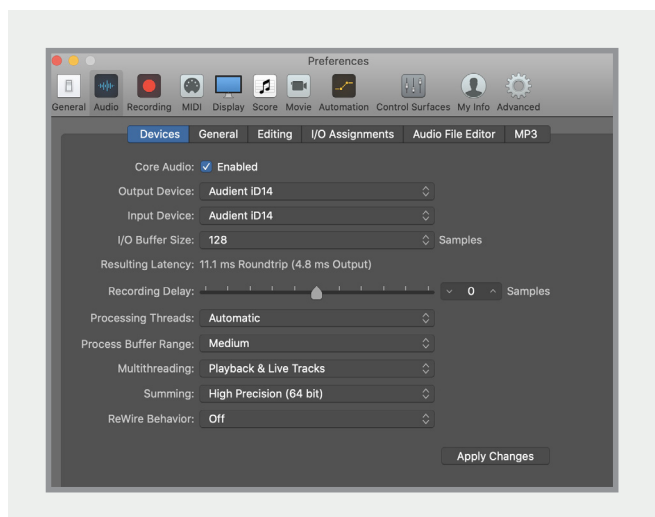
## Operation with Logic Pro

Once iD14 has been successfully installed following the steps detailed after **page 11** of this manual, launch Logic Pro and check the following:

### Logic Pro > Preferences > Audio



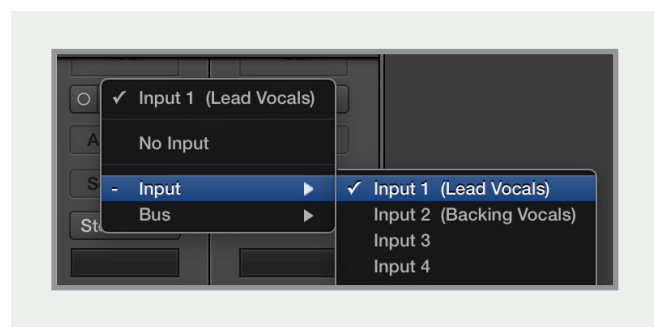
Ensure that iD14 is selected as the active audio device and set the buffer size (to affect system latency). If you are experiencing issues with playback stability and CPU loading, try increasing the buffer size. This appears with “overload” errors and/or pops and clicks and distortion in the audio.



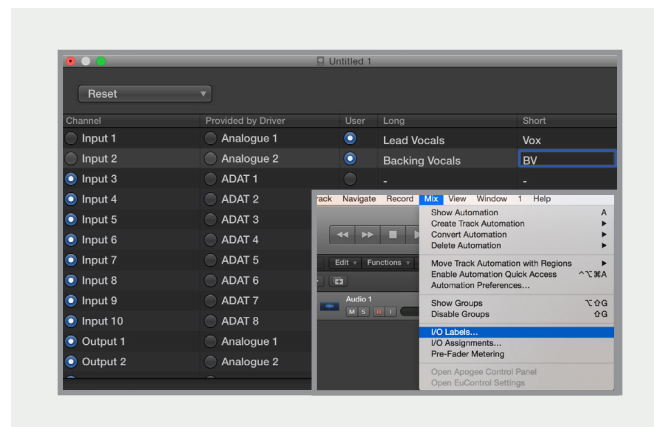
If you are using the iD mixer to monitor input signals while recording, be sure to disable Logic’s software monitoring to avoid phasing as the same source will be heard twice with a short delay between the low latency DSP signal and the delayed software monitoring signal.

## Assigning I/O

All of iD14’s input and output channels will be available to Logic for routing. There are a total of 10-inputs and 6-outputs reported from the driver. You can rename input and output channels to whatever you wish using the I/O label function. This is a great way to keep things organised.



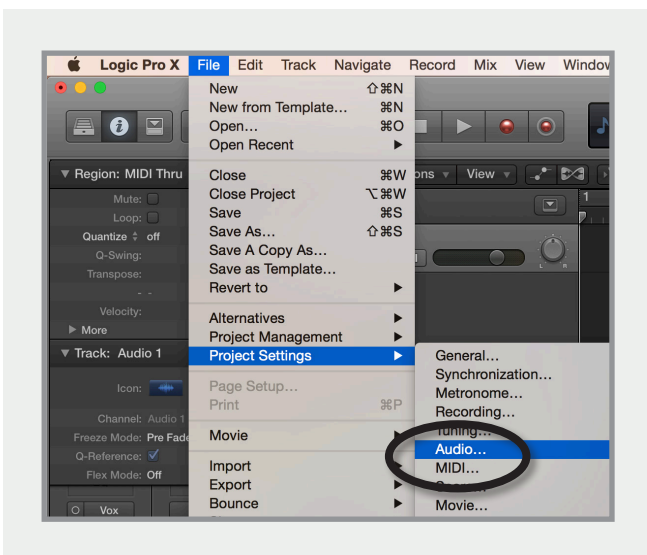
## Mix > I/O Labels



## Operation with Logic Pro

If you are using an external clock source (ADAT or S/PDIF) to clock iD14, please ensure that your Logic Pro project is set to the same sample rate when recording and playback in a session, otherwise things may sound a bit sharp or flat!

### File > Project Settings > Audio

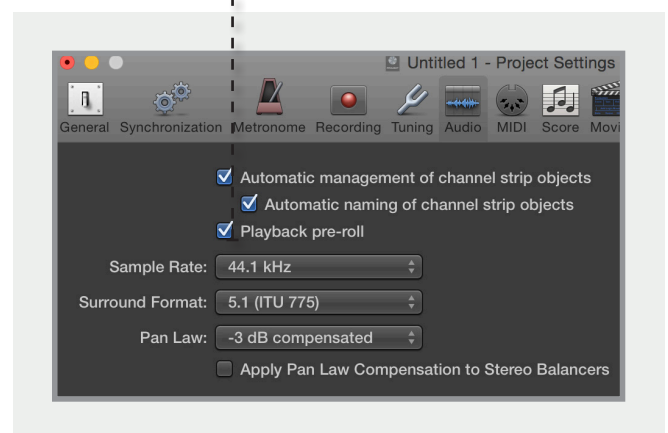
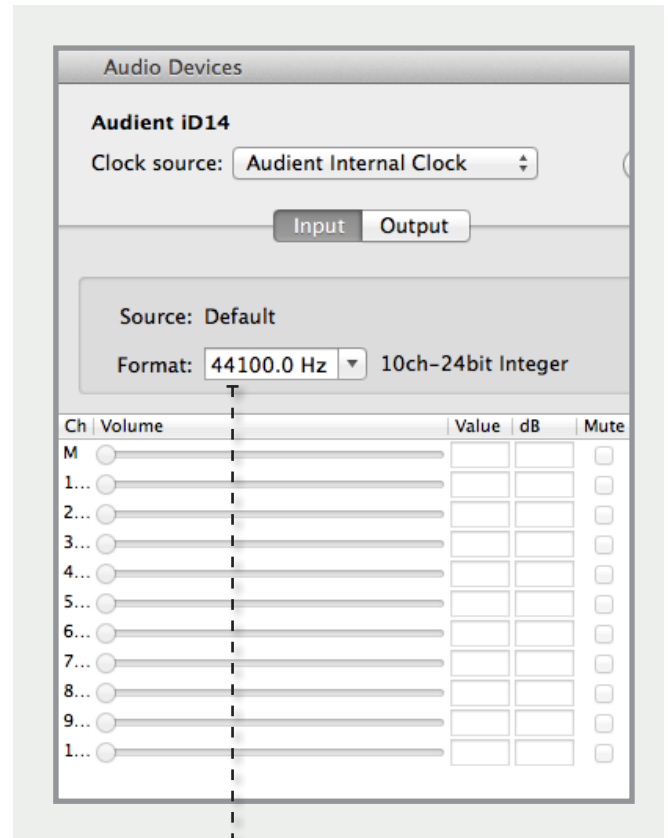


If you are using the internal clock in iD14, setting the sample rate via Logic Pro will update the iD14 sample rate to follow your session.

There may be a slight pause as the system re-clocks. This is normal.

This can be verified in Audio MIDI Setup.

## Macintosh HD > Applications > Utilities



For more Logic Pro information please consult your Apple user manuals & documentation.



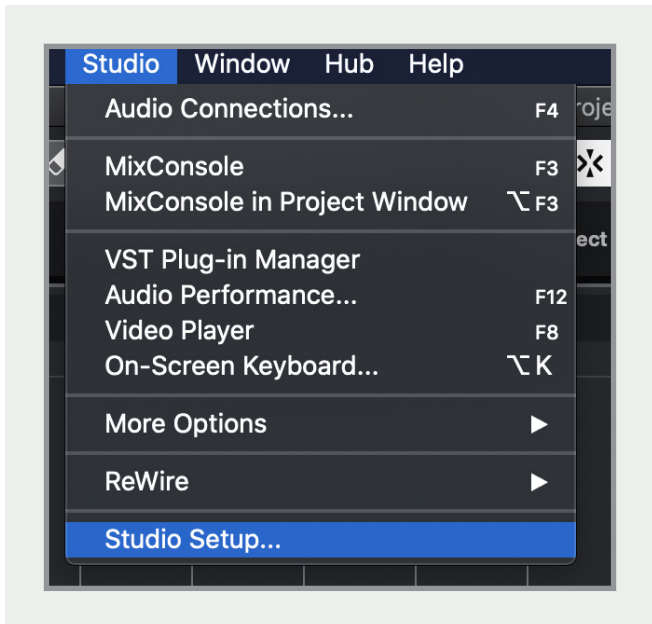


# Cubase/Nuendo Setup

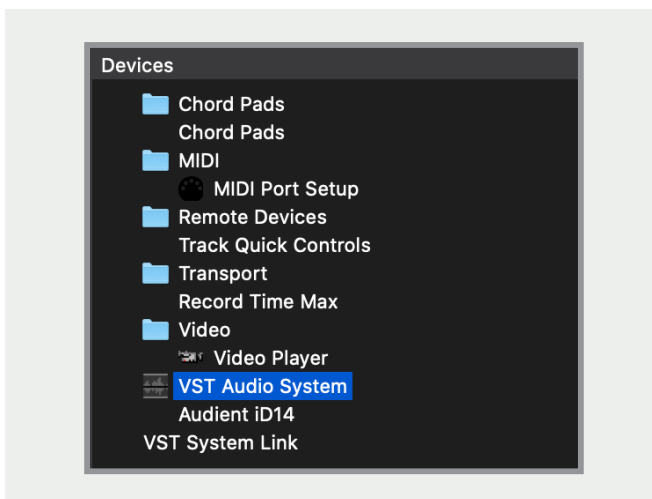
## Operation with Cubase / Nuendo

If using Windows, ensure that you have followed the installation instructions found on **page 11**. With the iD14 plugged into your computer, Launch Cubase or Nuendo and once a session is open, go to:

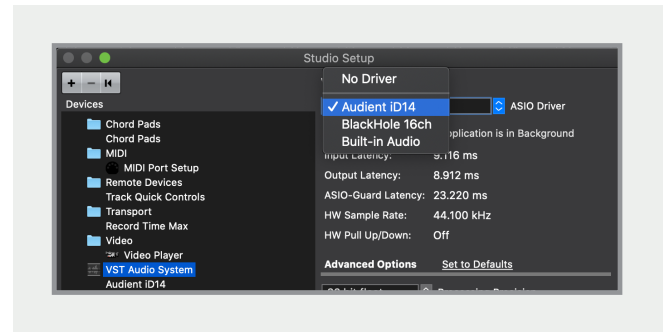
**Studio > Studio Setup...**



Select VST Audio System from the list of options



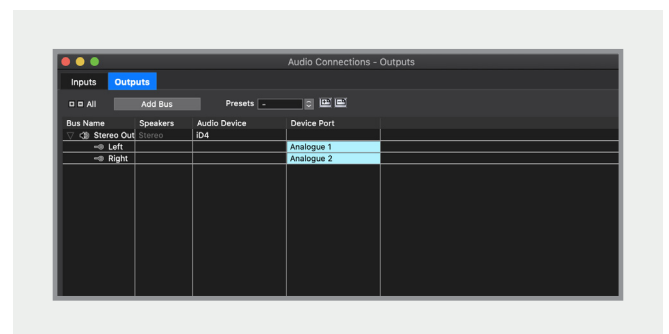
Then select the Audient iD14 from the dropdown menu. You will be asked if this is okay, select "Switch".



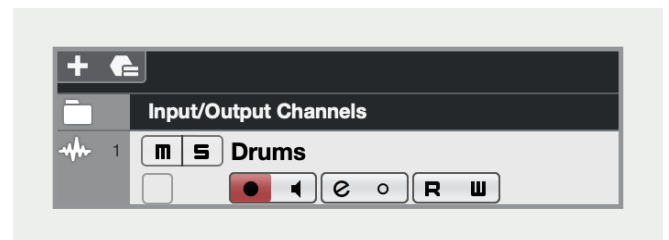
Close the VST device setup panel and navigate to the Audio connections panel:

## Devices > Audio Connections (F4)

Here you can ensure that all buses have been created in Cubase / Nuendo and therefore all ports are addressable in your session. Add new buses and assign them to the necessary I/O if required.



If using the iD14 Mixer App to monitor your inputs, ensure that input monitoring is turned off on the track.





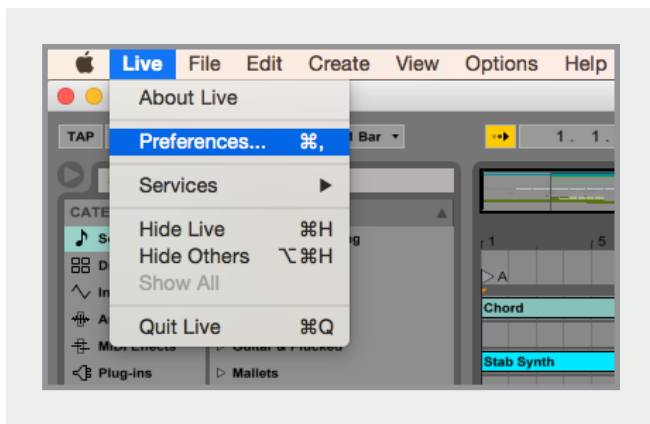
# Ableton Live Setup

## Operation with Ableton Live

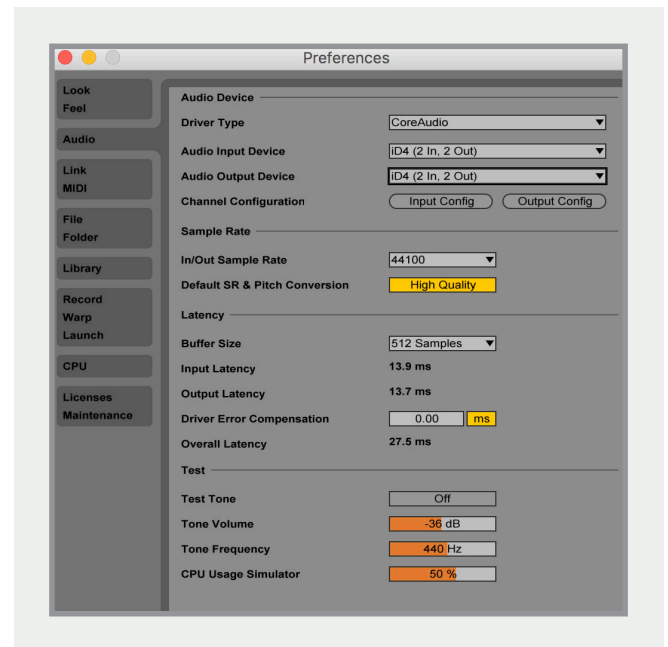
If using Windows, ensure that you have followed the installation instructions found on **page 11**.

With iD14 plugged into your computer, launch Ableton Live and head straight to:

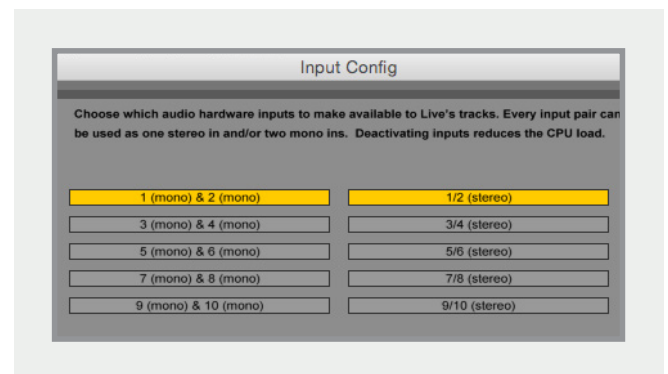
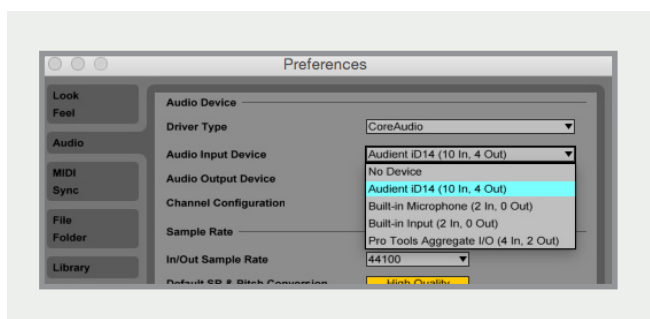
### Live > Preferences > Audio



If necessary you can limit the number of i/o channels reported as active inputs (from the driver) in Live by using the input and output config tabs. This is an excellent feature to help reduce CPU loading if all channels are not required.



Here navigate to the Audio tab and make sure that iD14 is assigned as the playback device.



In the Live Audio Preference panel you can set an appropriate buffer size (this can be kept high if you are monitoring input signals for recording via the iD mixer. Ensure that iD14 reports as a 10-in, 4-out device to Live.

# Troubleshooting & FAQ

## Troubleshooting

### “The unit will not power on”

Double check that the USB cable is plugged in. If it still won't power on, try using a different USB port on the computer and possibly even a different USB cable. If you are using a USB hub, please try plugging iD14 directly into the computer.

### “I get clicks and pops on DAW playback”

This is most likely to do with setting the buffer size too low for your computer. This can be caused by running very large projects with a lot of plugins and virtual instruments. Experiment with higher buffer sizes. Typically you want small buffer sizes for tracking or recording software synths to keep the latency low. However when mixing it is fine to set a slightly higher buffer size as latency is not so much of a problem.

### “When I connect to my computer, I cannot play any audio out from iD14”

Firstly double check that the USB cable connecting iD14 to your computer is functional and attached at both ends.

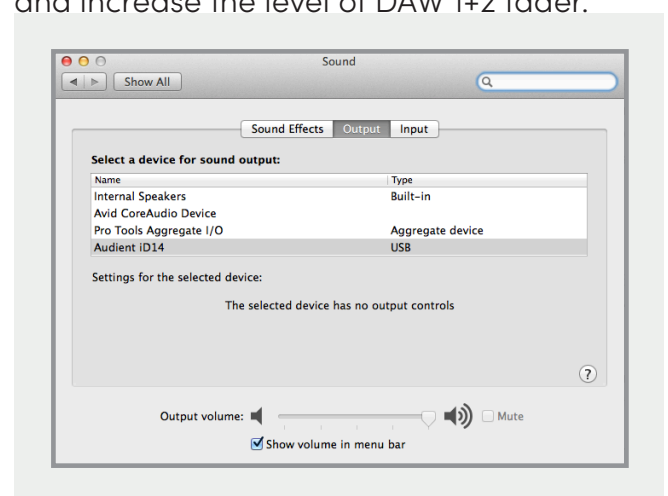
Double check that iD14 is set as the active playback device in your DAW and computer:

**System Preferences > Sound > Output Tab > Audient iD14 (macOS)**

**Control Panel > Hardware and Sound > Sound > Manage Audio Devices > Audient iD14 (Windows)**

Launch the iD mixer application to activate communication between your computer and iD14. This only needs to be done once straight after power up. Once iD14 is set to the operational state you desire, you can quit the iD application and it will continue to function as intended.

In the software mixer, locate the DAW channels by pressing the DAW view button and increase the level of DAW 1+2 fader.



## Troubleshooting

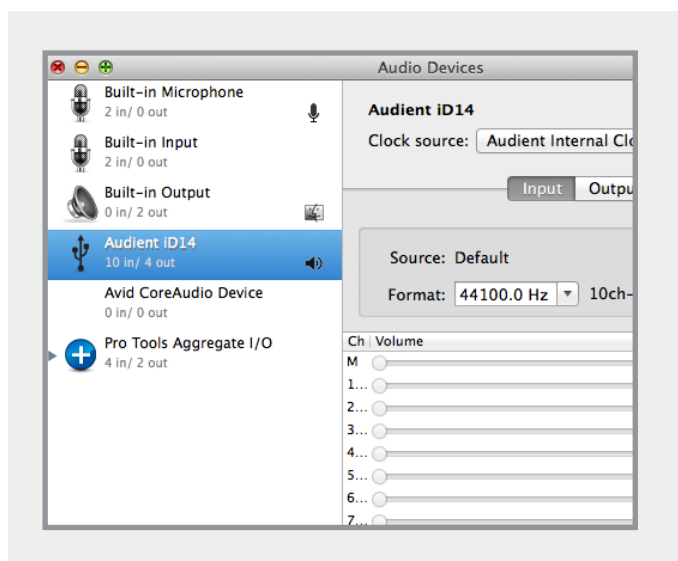
**“I have clocking issues which include iD14 not locking to external ADAT or SPDIF devices or operating at the incorrect rate compared to my session”**

If there is an issue with syncing of an external device, the Status LED in the System Panel will be red or yellow. If the status light is red then iD14 cannot detect a clock signal from an external device, and yellow if it can detect a signal at the wrong sample rate.

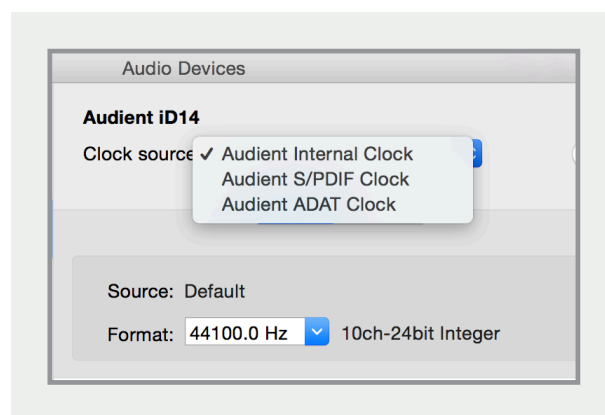
To change sample rate in OSX go to Audio MIDI Setup found by navigating to the folder:

**Macintosh HD > Applications > Utilities > Audio MIDI Setup**

Ensure that Audient iD14 is seen as an audio device (**Window Menu > Show Audio Window**).

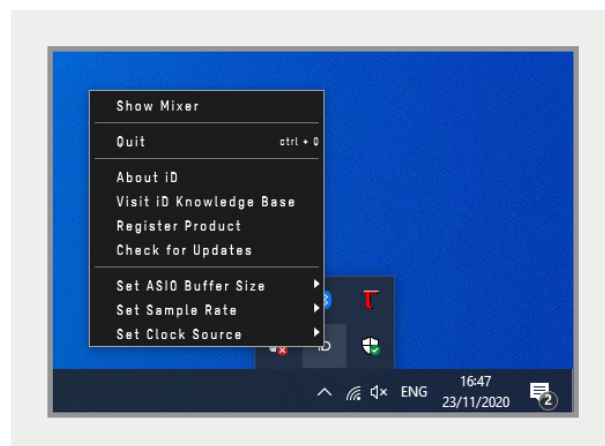


Double check that an appropriate clock source is selected (Internal for master operation), ADAT or S/PDIF clock for external slave operation. Ensure that you see the correct sample rate displayed in the Format drop-down menu.



If you are using Windows, go to the iD icon in the system tray and right click on it. This will bring up some settings including sample rate. Alternatively you can alter these settings in the Setup tab of the iD app.

Change the sample rate to match that of the external ADAT device and session.



## Troubleshooting

### “How do I reset the iD mixer application to its default state?”

To reset the mixer application, quit the iD app completely, then navigate to the following folder and delete the state.xml file (it will replenish upon a fresh launch of the application)

**Macintosh HD > User > Library > Application Support > Audient > iD > state.xml**

**(C:) > Users > yourusername > AppData > Roaming > Audient > iD > state.xml**

Do not delete the parent folder as this will also contain your iD mixer presets.

### “How do I make sure I have the latest version of iD firmware/software?”

To check for the latest updates to the iD desktop mixer application please visit: [audient.com/products/id14/downloads](https://audient.com/products/id14/downloads) and download and install the latest driver.

You will be made aware of firmware releases from the iD app when connected to the internet. Please refer to **page 13** in this user manual for more information regarding firmware update.

## FAQs

For more information and bug support, please search our online Help Centre which can be found here:

[support.audient.com](https://support.audient.com)

For technical support please create a ticket in our online support system, which can also be found in the support section of our website (see link above).

# Technical Specifications



## D.I / Instrument Input:

RANGE:	40dB
LINEUP:	12dBu = 0dBFS
MAX LINEUP:	+10dBu
THD+N @ 0dBu:	0.1%
SNR:	100dBu A-Weighted
FREQUENCY RESPONSE - MIN GAIN:	±0.5dB 10Hz to 20kHz
1/4" TS JACK:	Tip (Hot) & Sleeve (Shield)

## Analogue to Digital Converter:

THD+N @ -1dBFS:	0.001%
DYNAMIC RANGE:	120dB A-Weighted
CMRR:	>80dB
FREQUENCY RESPONSE:	±0.5dB 10Hz to 40kHz

## Digital Input:

8-CHANNEL ADAT:	44.1kHz to 48.0kHz	
4-CHANNEL ADAT:	88.2kHz to 96.0kHz	SMUX
STEREO S/PDIF / TOSLINK:	44.1kHz to 96.0kHz	(Stereo)

## Headphone Outputs: (Measurements with 100k load)

LINEUP:	18.5dBu = 0dBFS
THD+N @ -1dBFS:	0.0009%
DYNAMIC RANGE:	125.5dB A-Weighted
CROSSTALK:	>116dB
FREQUENCY RESPONSE:	±0.25dB 10Hz to 40kHz
MAXIMUM LEVEL @ 30R:	2.59V Peak, 1.827V RMS, 223mW
MAXIMUM LEVEL @ 62R:	4.18V Peak, 2.95V RMS, 280mW
MAXIMUM LEVEL @ 600R:	7.72V Peak, 5.46V RMS, 100mW
1/4" TRS JACK::	Tip (Left), Ring (Right) & Sleeve (Shield)

## Microphone/Line Input:

GAIN RANGE:	58dB
LINEUP:	12dBu = 0dBFS
MIC MAX INPUT LEVEL:	12dBu
MAX INPUT LEVEL:	21dBu
INPUT IMPEDANCE (Mic):	2.8k
INPUT IMPEDANCE (Line):	>8k
THD+N @ 0dBu:	0.00170%
SNR:	101dBu A-Weighted
EIN:	-129dB A-Weighted
CMRR @ 1k:	>-75dB
CROSSTALK:	>-100dB
FREQUENCY RESPONSE - MIN GAIN:	±0.5dB 10Hz to 40kHz

XLR COMBI FEMALE:	Pin 2 (Hot), Pin 3 (Cold) & Pin 1 (Shield)
1/4" TRS JACK:	Tip (Hot), Ring (Cold) & Sleeve (Shield)

## Line Outputs (DAC):

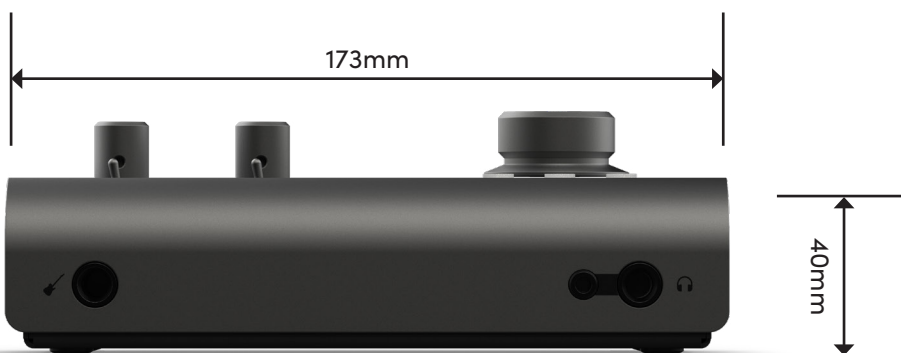
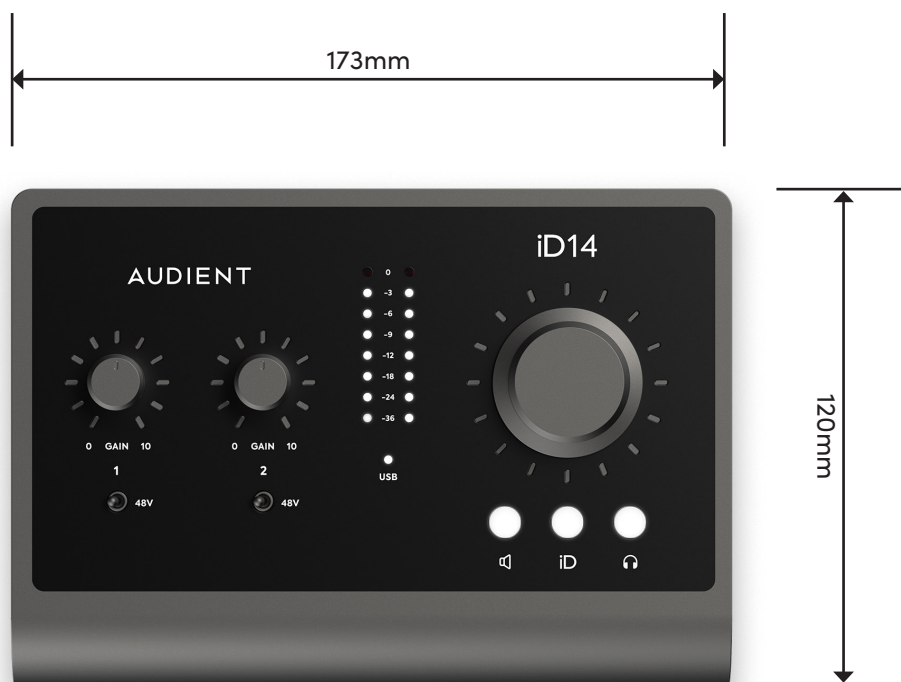
LINEUP:	12dBu = 0dBFS
THD+N @ -1dBFS:	0.0006%
DYNAMIC RANGE:	125.5dB A-Weighted
CROSSTALK:	>120dB
FREQUENCY RESPONSE:	±0.1dB 10Hz to 40kHz

1/4" TRS JACK:	Tip (Hot), Ring (Cold) & Sleeve (Shield)
----------------	--

## USB-C High Speed:

BUS POWER:		
MIN REQUIREMENT:	0.9A @ 5V	>=USB 3.0 Port
MAX REQUIREMENT:	1.5A @ 5V	USB-C: Provides higher headphone outputs levels
No. of INPUT CHANNELS:	2	(2 Analogue)
No. of OUTPUT CHANNELS:	2	(2 Analogue)
DSP MIXER LATENCY:		ROUND TRIP (in-to-out)
	44.1kHz	0.65mS
	48.0kHz	0.6mS
	88.2kHz	0.33mS
	96.0kHz	0.31mS

# Dimensions



# Warranty

## Warranty Statement

Your iD14 comes with a manufacturer's warranty for one year (12 months) from the date of despatch to the end user.

The warranty covers faults due to defective materials used in manufacture and faulty workmanship only.

During the warranty period Audient will repair at its discretion or replace the faulty unit provided it is returned carriage paid to an authorised Audient service centre. We will not provide warranty repair if in our opinion the fault has resulted from unauthorised modification, misuse, negligence or accident.

We accept liability to repair or replace your iD14 as described above. We do not accept any additional liability. This warranty does not affect any legal rights you may have against the person who supplied this product - it is additional to those rights.

## Warranty Limitations

This warranty does not cover damage resulting from accident or misuse. The warranty is void unless repairs are carried out by an authorised service centre. The warranty is void if the unit has been modified other than at the manufacturer's instruction. The warranty does not cover components which have a limited life, and which are expected to be periodically replaced for optimal performance. We do not warrant that the unit shall operate in any other way than as described in this manual.

Audient Ltd  
Aspect House  
Herriard  
Hampshire  
RG25 2PN  
United Kingdom

**Tel: +44 (0) 1256 381944**  
[audient.com](http://audient.com)



# Service

## Service Information

iD14 contains no user-serviceable components, please refer to qualified service personnel for diagnosis and repair. Your warranty will be void if you tamper with the device at component level. If you have any questions with regard to the repair, please contact Audient Ltd.

If your unit is in warranty, please contact your dealer directly for a repair or replacement (at the discretion of the dealer).

For out of warranty repairs, please contact Audient Ltd, after which a **Return Materials Authorization** (RMA) number will be assigned. This number will serve as a reference for you and helps facilitate and expedite the return process. When the unit is returned please include this RMA number along with a description of the fault inside the packaging box.

To request an RMA, access technical support & FAQs, ask for troubleshooting assistance or make an enquiry, please visit: [support.audient.com](https://support.audient.com)

# Glossary

A	Amperes
ADAT	Alesis Digital Audio Tape
ADC	Analogue to Digital Converter
DAW	Digital Audio Workstation
ASP	Analogue Signal Processing
CPU	Central Processing Unit
CUE	Artist Headphone Mix
DAC	Digital to Analogue Converter
dB	Decibel
dBu	Decibel referenced to 0.775Vrms = 0 dBu
dBFS	Decibel Full Scale
DC	Direct Current
D.I	Direct Injection (Instrument Input)
DoC	Declaration of Conformity
DSP	Digital Signal Processing
EQ	Equaliser
FAQ	Frequently Asked Questions
FCC	Federal Communications Commission
GB	Gigabyte
GUI	Graphical User Interface
HPF	High Pass Filter
HV	High Voltage
i/o	Input / Output
JFET	Junction Field Effect Transistor
LED	Light Emitting Diode
RoHS	Restriction of Hazardous Substances
RAM	Random Access Memory
S/PDIF	Sony Philips Digital Interface Format
THD+N	Total Harmonic Distortion + Noise
TRS	Tip Ring Sleeve (1/4" Jack Balanced)
TS	Tip Sleeve (1/4" Jack Unbalanced)
USB	Universal Serial Bus
V	Volts
XLR	Extra Live Return, Extremely Low Resistance, Canon X Series, Latching, Resilient Rubber Compound... or make up your own!