

Keyboard Replacement Instructions

Follow the instructions in this sheet carefully. Failure to follow these instructions could damage your equipment and void its warranty.

Warning: During this procedure, keep small parts away from children.

Tools Required

- Coin
- #0 Phillips screwdriver
- Jeweler's flat-blade screwdriver (if keyboard is locked)

Opening the Computer

Warning: Always shut down your computer before opening it to avoid damaging its internal components or causing injury. After you shut down the computer, the internal components can be very hot. Let the computer cool down before continuing.

1. Place your computer on a clean, flat surface.
2. Shut down your computer and wait thirty minutes before continuing.
3. Disconnect the power cord and any other cables connected to the computer.

4. Close the computer, turn it over, and locate the battery latch.

Use a coin to turn the battery latch 1/4 turn clockwise to unlock the battery. Gently remove the battery. **(Figure 1)**

Removing the battery will prevent you from accidentally turning on the computer.

Warning: Removing the battery before shutting down your computer may result in data loss.

Figure 1



5. Turn over the computer.
6. Raise the display so you can access the keyboard.
7. Make sure the keyboard locking screw, located in the small plastic tab to the left of the Num Lock key **(Figure 2)**, is not in the locked position. Your iBook comes with the keyboard unlocked, so unless you or someone else locked the keyboard, you can skip this step.

To unlock the keyboard, turn the screw 1/2 turn.

Figure 2



-
8. Release the keyboard by pulling down on the keyboard release tabs (located to the left of the F1 and F12 keys) (**Figure 3**), then lift the top portion of the keyboard up slightly, and toward the display.

Figure 3



9. Flip the keyboard over and lay it on the palm rest. (**Figure 4**)

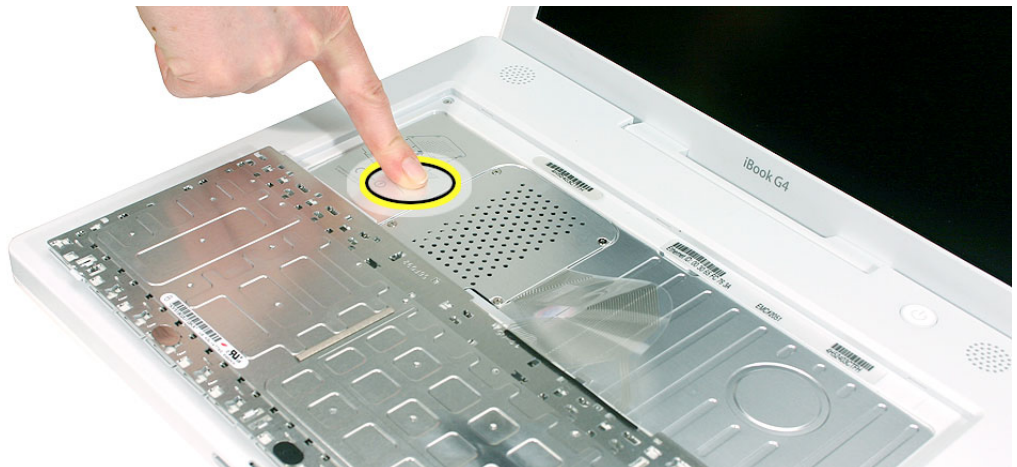
Figure 4



10. Touch a metal surface on the inside of the computer to discharge any static electricity, as shown. **(Figure 5)**

Important: To avoid electrostatic discharge damage, always ground yourself by touching the computer's framework before you touch any parts or install any components inside the computer. To avoid static electricity building back up in your body, do not walk around the room until you have completed the installation and closed the computer.

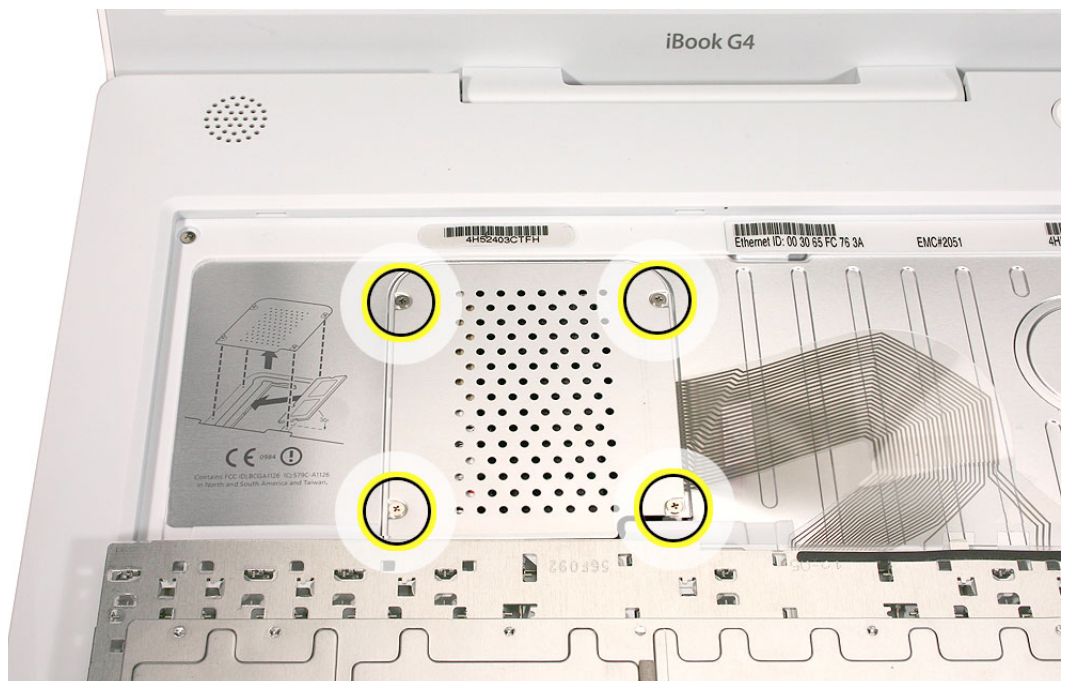
Figure 5



Removing the Installed Keyboard

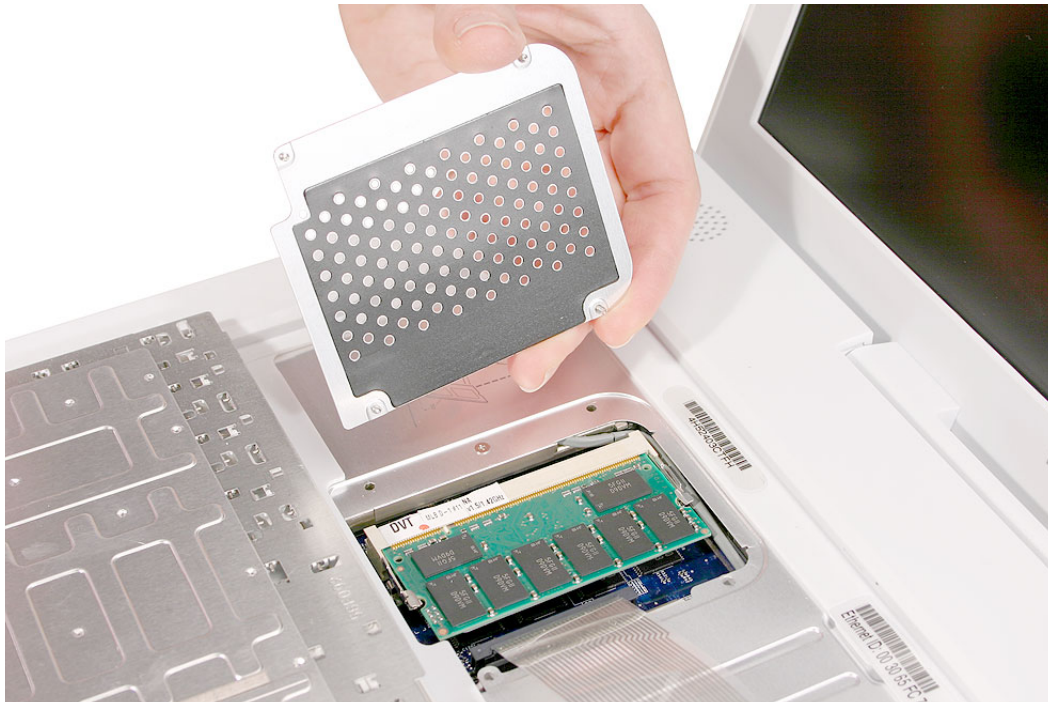
1. Loosen the four captive screws that secure the RAM shield. **(Figure 6)**

Figure 6



2. Lift the RAM shield (with screws attached) out of the computer. **(Figure 7)**

Figure 7

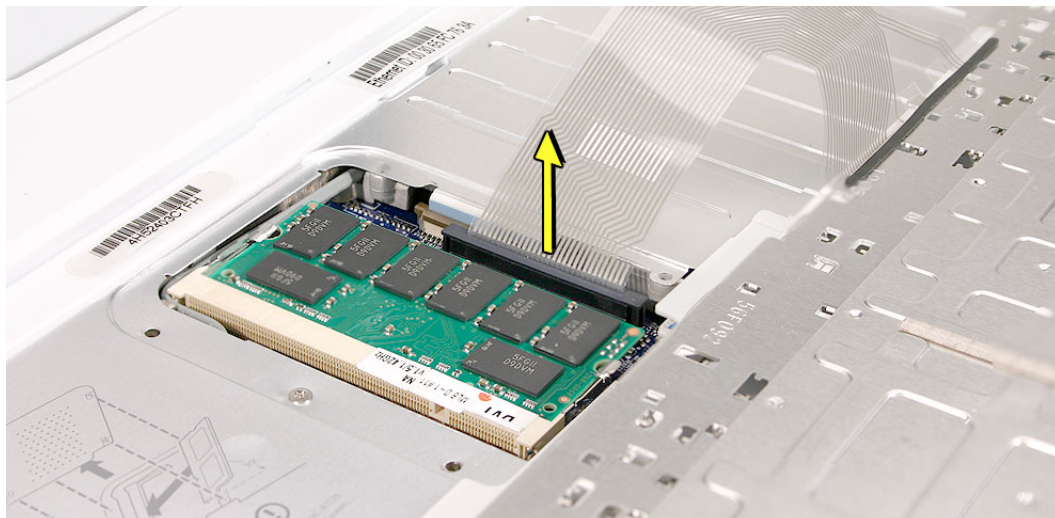


3. Locate the keyboard cable connector. **(Figure 8)**
4. Firmly grasp the cable, and carefully pull it straight up until the connector releases.

Important: Pull straight up, do not twist or pull the cable sideways.

Note: If needed, use your fingers to pry up the connector from side to side.

Figure 8

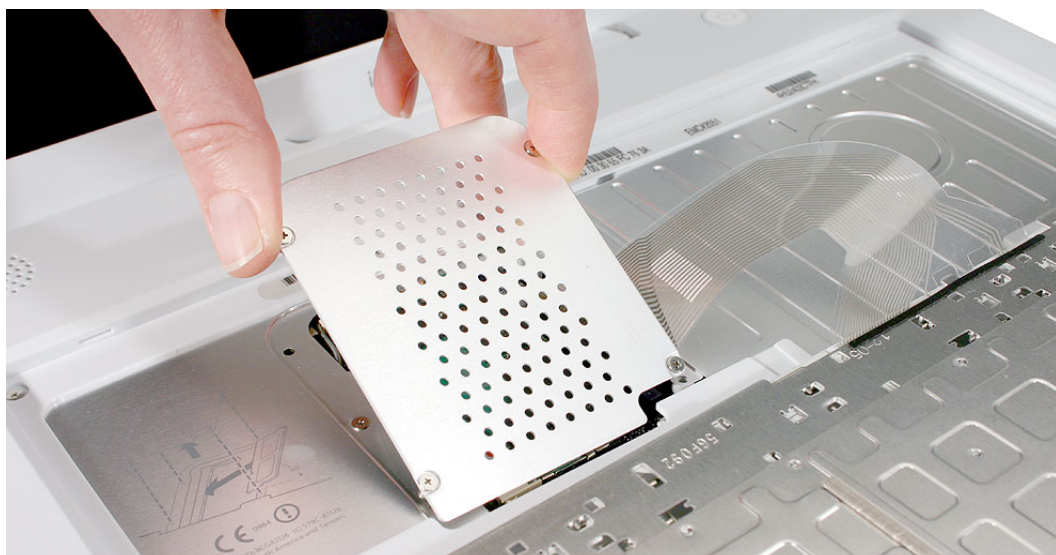


5. Set the keyboard aside.

Installing the Replacement Keyboard

1. Lay the replacement keyboard in the correct orientation over the keyboard opening, then flip it toward you and lay it face down on the palm rest to expose its connector cable.
2. Firmly insert the keyboard cable connector into its connector on the computer.
3. Insert the RAM shield. **(Figure 9)**
4. Make sure that the screw holes on the shield and computer align and that the shield sits uniformly flat.
5. Tighten the RAM shield screws.

Figure 9



Closing the Computer

1. Flip the keyboard back toward the keyboard opening in the case.

Hold the keyboard at a 45-degree angle above the keyboard opening, and insert the tabs on the bottom edge of the keyboard into the slot under the edge of the opening.

Important: Make sure that all the tabs are seated and that the keyboard rests flush against the edge of the opening.

2. Lay the keyboard flat into the keyboard opening.
3. Pull down on the keyboard release tabs and then press down on the top portion of the keyboard. **(Figure 10)**

Figure 10



4. Let go of the keyboard release tabs to secure the keyboard in place.
5. Close the display and turn the iBook over.
6. Replace the battery into the battery compartment. Hold the battery flush and use a coin to turn the latch counterclockwise 1/4 turn to lock the battery into place.
7. Turn over your iBook and open the display.
8. Reconnect the power cord and any other cables that were connected, and restart your computer.

Note: You may need to reset the date and time (using the Date & Time control panel).

Warning: Never turn on your computer unless all of its internal and external parts are in place and it is fully reassembled. Operating the computer when it is missing parts can damage your computer or cause injury.

🍏 Apple Computer, Inc.

© 2005 Apple Computer, Inc. All rights reserved.

This document is protected under U.S. Copyright Law and International Treaties, and no part of this document may be reproduced in any form without written permission from Apple.

Apple is not responsible for typographical, printing, or inadvertent errors.

Apple Computer, Inc.

1 Infinite Loop

Cupertino, CA 95014-2084

USA

+ 1 408 996 1010

<http://www.apple.com>

Apple and the Apple logo are trademarks of Apple Computer, Inc., registered in the U.S. and other countries. iBook is a trademark of Apple Computer, Inc.