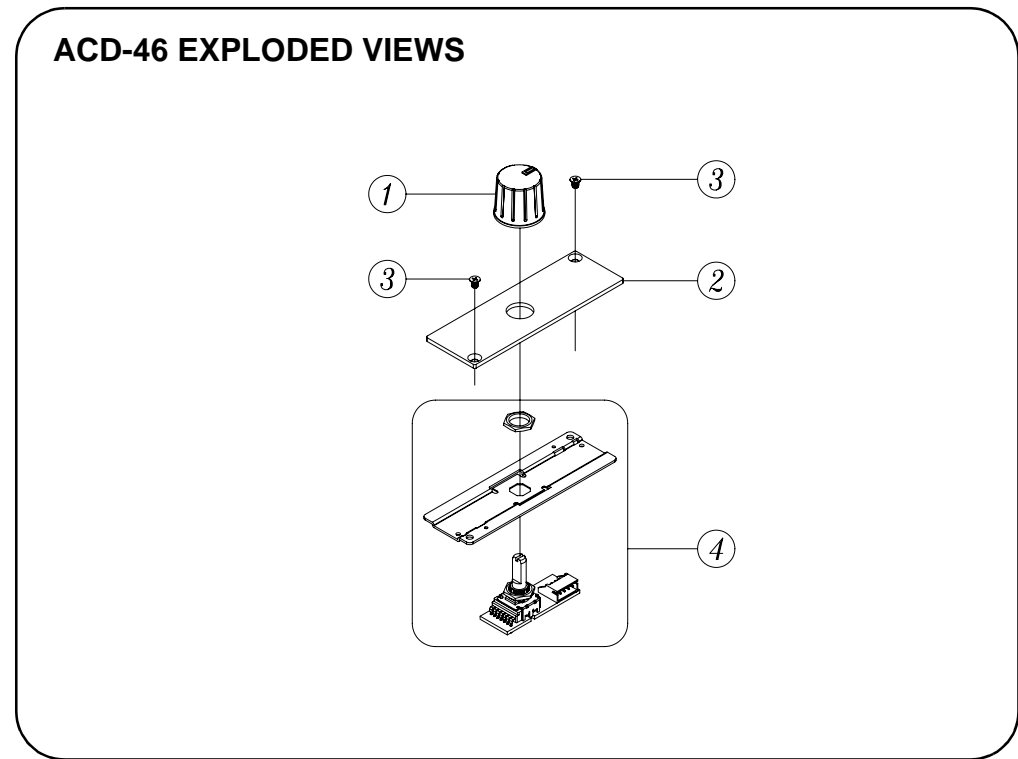
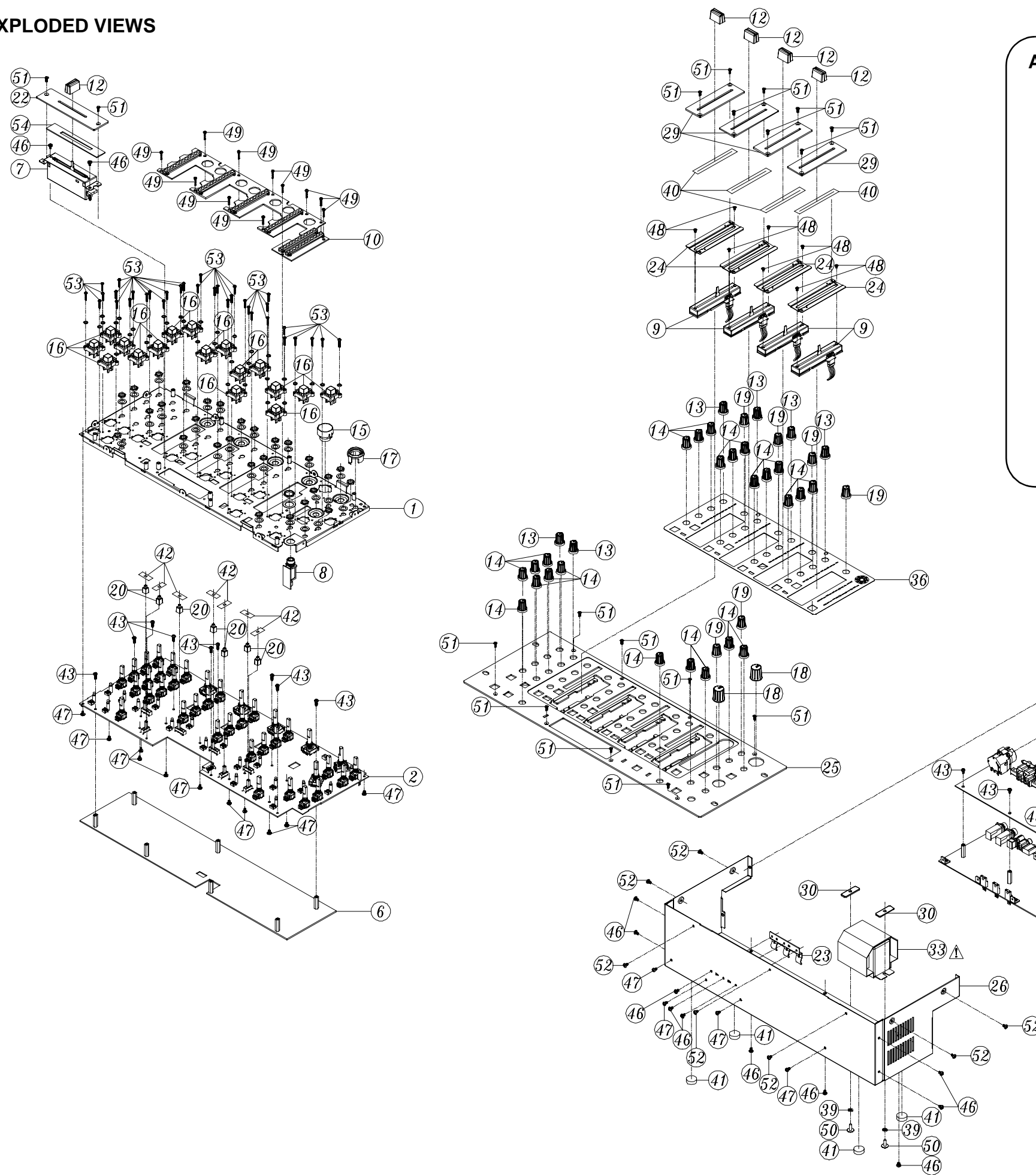


EXPLODED VIEWS

DN-X900 EXPLODED VIEWS



WARNING:
Parts marked with this symbol \triangle have critical characteristics.
Use ONLY replacement parts recommended by the manufacturer.

\triangle 印の部分は安全を維持するために重要な部品です。従って交換時は必ず指定の部品を使用してください。

PARTS LIST OF EXPLODED VIEW

*本表に記載されている部品は、補修用部品のため製品に使用している部品とは一部、形状、寸法などが異なる場合があります。

* The parts listed below are for maintenance only, might differ from the parts used in the unit in appearances or dimensions.

* "nsp" 印の部品は常時在庫していませんので供給に長時間を要することがあります。場合によっては、供給をお断りする場合があります。

* Part indicated with the mark "nsp" are not always in stock and possibly to take a long period of time for supplying, or in some case supplying of part may be refused.

Note: The symbols in the column "Remarks" indicate the following destinations.

E2 : Europe model E3 : U.S.A. & Canada model

PARTS LIST (DN-X900)

	Ref. No.	nsp	Part No.	Part Name	Remarks	Q'ty	New
	1	nsp	00D 958 7064 007	FRONT BOARD ASS'Y		1	
	2	nsp	00D 958 7068 702	MIXER PWB ASS'Y		1	*
	3	nsp	00D 958 7068 906	BOOTH PWB ASS'Y		1	*
	4	nsp	00D 958 7069 206	OUTPUT PWB ASS'Y		1	*
⚠	5	nsp	00D 958 7069 109	POWER PWB ASS'Y	E2	1	*
⚠	5	nsp	00D 958 7069 400	POWER PWB ASS'Y	E3	1	*
	6	nsp	00D 958 7068 809	CPU PWB ASS'Y		1	*
	7		00D 958 7069 303	CROSS FADER		1	*
	8	nsp	00D 958 7069 002	HEADPHONE PWB ASS'Y		1	*
	9	nsp	00D 958 7065 006	CH VR PWB ASS'Y		4	
	10	nsp	00D 958 7065 103	LEVER METER PWB ASS'Y		1	
	11	nsp	00D 958 7046 504	CORD BUSH(SZ)		1	
	12		00D 958 7045 505	PUSH KNOB		5	
	13		00D 958 7045 602	ROTARY KNOB		6	
	14		00D 958 7045 709	ROTARY KNOB		24	
	15		00D 958 7045 903	TRANSPARENT MEDIA ADAPTER		1	
	16		00D 958 7046 009	SQUARE KNOB		17	
	17		00D 958 7046 106	JACKET		1	
	18		00D 958 7046 203	LARGE ROTARY KNOB		2	
	19		00D 958 7046 300	SMALL ROTARY KNOB		6	
	20		00D 958 7046 407	SQUARE PUSH KNOB		7	
	21		00D 958 7013 605	GROUND PIN		3	
	22		00D 958 7047 707	VR BOARD		1	
	23	nsp	00D 958 7046 708	FIXED PLATE FOR IC		1	
	24		00D 958 7047 309	CH FIXED PLATE		4	
	25		00D 958 7068 401	FRONT PANEL		1	*
	26	nsp	00D 958 7047 406	BOTTOM BASE		1	
	27	nsp	00D 958 7065 909	BACK COVER	E2	1	*
	27	nsp	00D 958 7066 005	BACK COVER	E3	1	*
	28	nsp	00D 958 7068 508	BACK BOARD		1	*
	29		00D 958 7047 503	CH VR BOARD		4	
	30	nsp	00D 958 7047 600	BRACKET TRANSFORMER		2	
⚠	31		00D 958 7015 302	POWER SW		1	
⚠	32A		00D 958 7051 502	AC POWER CORD(VDE TYPE)		1	
⚠	32B		00D 958 7051 405	AC POWER CORD(UL TYPE)		1	
⚠	33		00D 958 7052 404	TRANSFORMER(AC230V)	E2	1	
⚠	33		00D 958 7052 307	TRANSFORMER(AC115V)	E3	1	
⚠	34		00D 958 7056 002	0.01uF/250V,M,BULK 16,Y5V		1	
	35		00D 958 7061 107	RCA ADAPTOR PLUG(A028)		6	
	36		00D 958 7069 507	DECORATION		1	*
	37		-	NUT(M3*P0.5)		3	
	38		00D 958 7039 508	WASHER(8*3.2*1t,NI)		3	
	39		00D 958 7063 600	SPRING		2	
	40	nsp	00D 958 7063 804	HIMELON		5	
	41		00D 958 7063 901	MAT FORBASE		4	
	42	nsp	00D 958 7063 707	CUSHION		7	