
DM-3200 DAW Control

Mackie Control emulation for SONAR 4.x

Version 1.11

1.	Summary	3
2.	Setting up the DM-3200.....	3
2.1	Enabling MIDI devices in SONAR	3
2.2	Adding a Control Surface.....	3
2.3	Configuration	4
3.	LCD screen	6
4.	Channel Strip.....	6
4.1	SEL key limitation.....	6
5.	Top panel buttons	7
5.1	Pan	7
5.2	Flip.....	7
5.3	Aux.....	7
6.	Transport	8
6.1	F1-8.....	8

1. Summary

This manual describes using the DM-3200's control surface features with SONAR 4.x.

2. Setting up the DM-3200

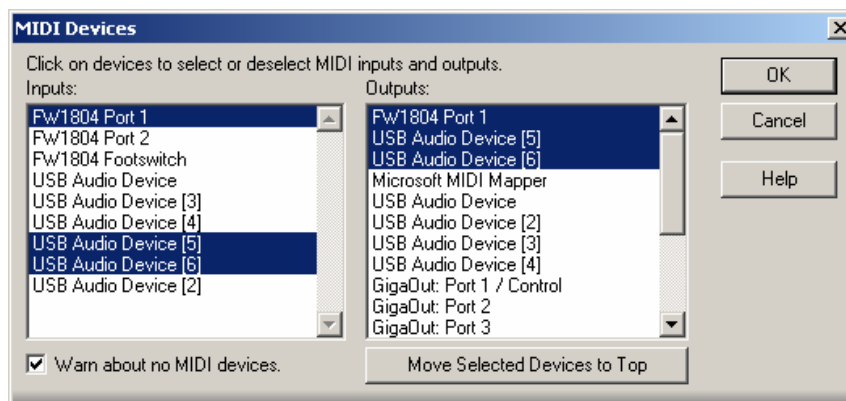
At the DM-3200's REMOTE > EXT.CTRL screen, add two MC for SOANR devices.

Similarly, add one MC for SONAR device in the REMOTE > MACHINE. CTRL screen. It is necessary to check the TRA radio button here in order to control SONAR's transport functions.

2.1 Enabling MIDI devices in SONAR

Click SONAR Options > MIDI Devices and the MIDI devices window opens.

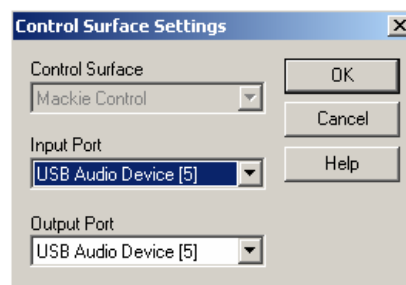
Select USB audio device for Inputs and Outputs and select USB devices [5]&[6].



Click OK and close the window.

2.2 Adding a Control Surface

Click Options > Control Surfaces and the Control Surfaces window opens.



Click the Add new control surface icon and select Mackie Control for Control Surface and USB audio device [5] for Input/Output port, and then click OK.

Similarly, click the Add new control surface icon and select Mackie Control XT for Control Surface and USB audio device [6] for Input/Output port, and then click OK.

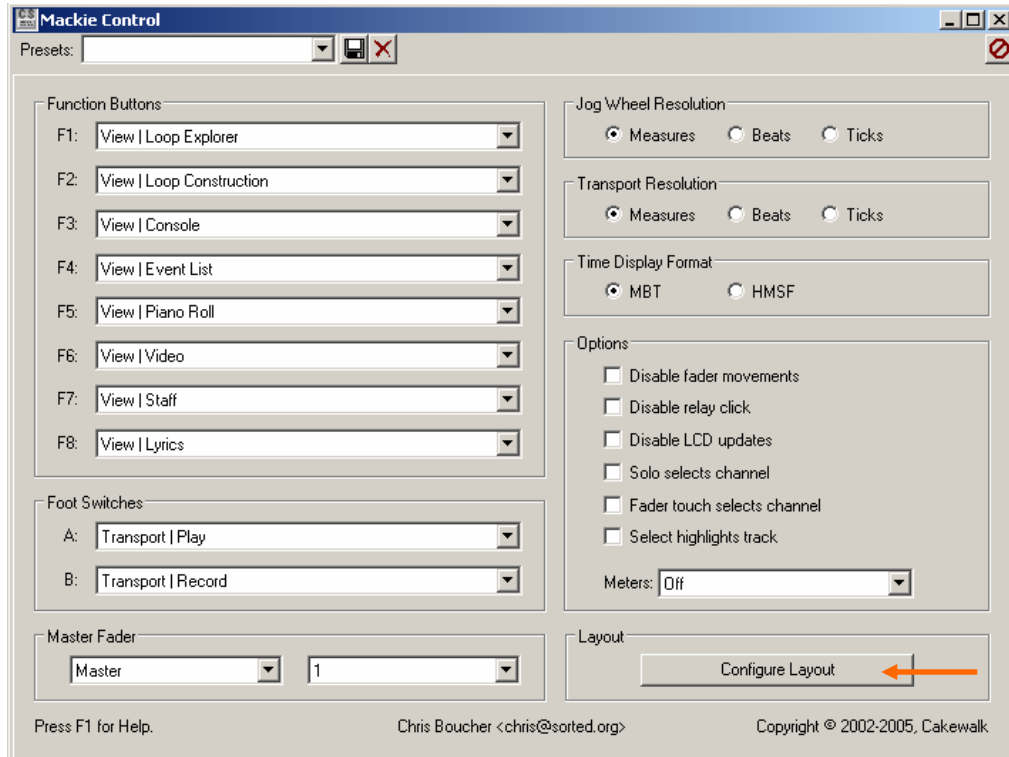
Close Control Surfaces window.

2.3 Configuration

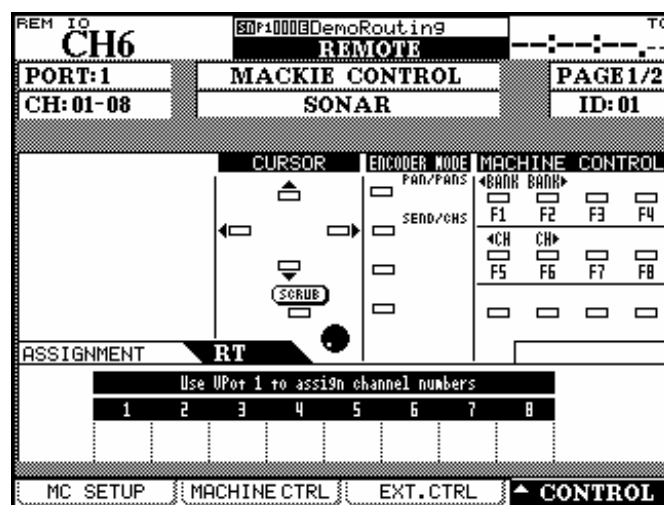
SONAR must be configured so that the channel groups 1-8 and 9-16 are recognized.

Click Tools > Mackie Control and the Mackie Control window opens.

Click the Configure Layout button.

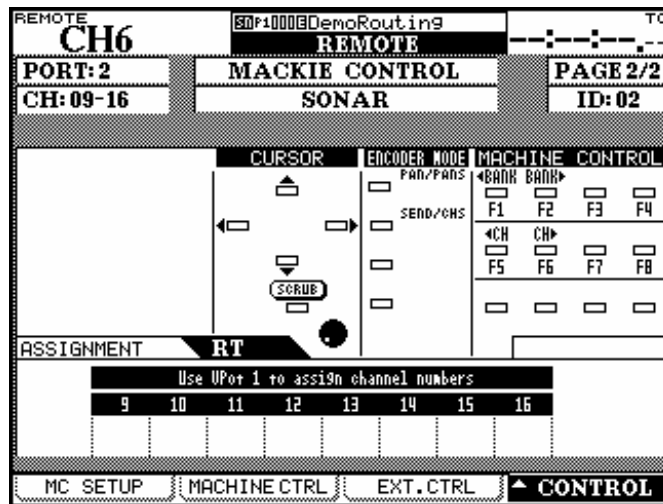


The Configure Layout button changes to Press Again When Done. The first line in the Mackie Control display section in the DM-3200 LCD screen reads "Use VPot 1 to assign channel numbers" and "1-8" is displayed on the 2nd line as control target tracks.

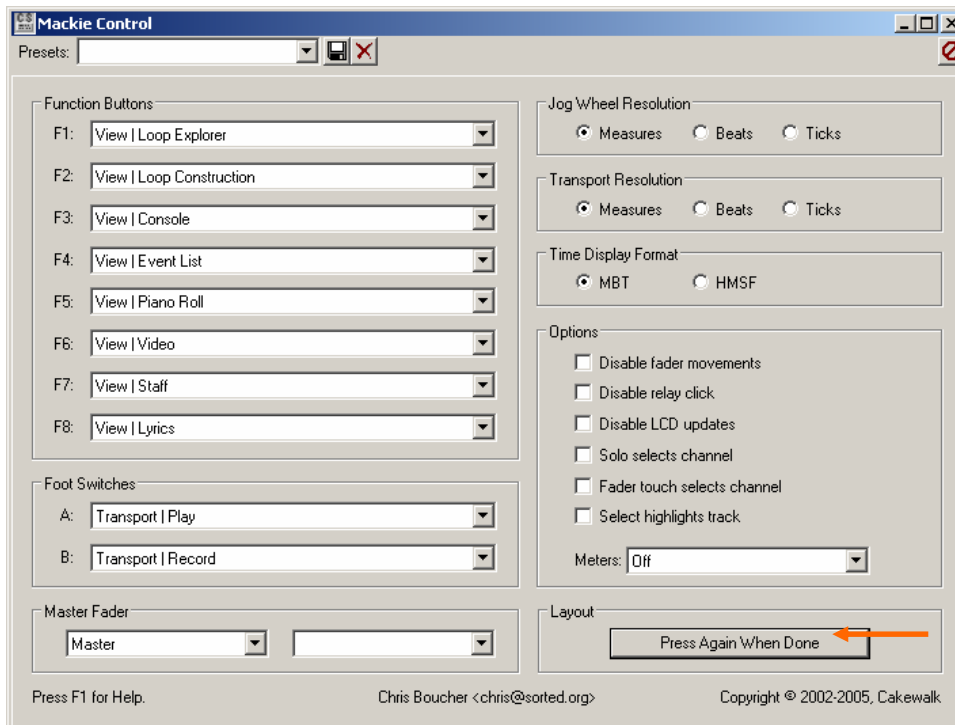


Check to see that CH:01-08 is displayed in the upper left and select Track1-8 with Vpot1 (CH1 LED Ring Encoder).

Touch any fader on channels 9-16 and the CH:09-16 screen is displayed in the upper left and select Track9-16 with Vpot1 (CH9 LED Ring Encoder).



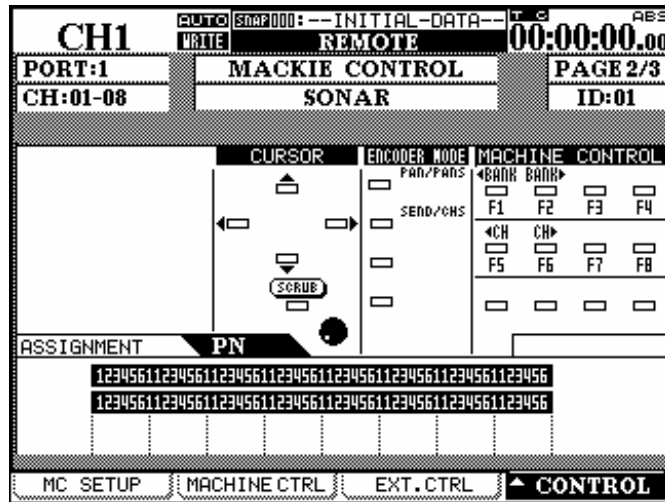
Click the Press Again When Done button in SONAR and close the window.



The setup has been completed.

3. LCD screen

The SONAR-ready Mackie Control screen looks like this:



4. Channel Strip

The table below provides an overview of the channel strip-related SONAR-ready functions.

DM-3200	Modifier	SONAR function	Note
Ring encoder		Encoder	Controls operations such as Pan and Aux send.
Ring LED		Ring LED	Turns on the LED according to data sent by SONAR in response to Ring encoder operation.
Select	Rec	Rec ready	Arms tracks (making them ready for recording). The REC LED turns on for the armed tracks.
Solo		Solo	Switches the track solo on and off. The SOLO LED turns on when a track is soloed.
Mute		Mute	Switches the track mute between on and off. The MUTE LED turns on when a track is muted.
Track fader touch		Track fader touch	Sends out a touch-sense Track fader message.
Track fader		Track fader	Controls the Track fader.
Master fader touch		Master fader touch	Sends out a touch-sense Master track message.
Master fader		Master fader	Controls the Master fader.

4.1 SEL key limitation

With SONAR, the SEL key is not available for selecting tracks. Switching between channel groups 1-8 and 9-16 is possible on the DM-3200 LCD screen.

5. Top panel buttons

The table below provides an overview of the top panel buttons-related SONAR-ready functions.

DM-3200	Modifier	SONAR function	Note
Pan		Pan	Sets parameters to be controlled by the Ring encoder. See Section 5.1 below.
Aux		Sends	Sets parameters to be controlled by the Ring encoder. See Section 5.2 below.
Flip		Flip	Flips between a parameter value assigned to a track's Ring encoder and a fader level. See Section 5.3 below.
Arrow up		Arrow up	
Arrow down		Arrow down	
Arrow left		Arrow left	
Arrow right		Arrow right	
Data wheel			
	Scrub	Scrub	Shifts the data wheel to the Scrub mode. The SCRUB switch is displayed inverted in Scrub mode.
LCD character		LCD display	Causes data coming from DAW to be displayed in the LCD display section.

5.1 Pan

SONAR's specific implementation of the Pan command is as follows:

- First Press: LCD shows "NP" and channel encoders control Pan.
- Second Press: LCD shows "N.P" and channel encoders control Pan on encoder #1 while encoders #2 & higher control Aux Sends.
- Third Press: Back to Pan operation.

5.2 Flip

SONAR's specific implementation of the Flip command is as follows:

- First Press: Faders & encoders control the same parameter
- Second Press: Faders control the selected parameter and the encoders control channel level.
- Third Press: Back to normal operation.

5.3 Aux

SONAR's specific implementation of the Aux (Sends) command is as follows:

- First Press: LCD shows "ES" and channel encoders Aux 1.
- Second Press: LCD shows "E.S" and channel encoders Aux Enable/Disable, Level, Pan, and Pre/Post for all Aux Sends on the selected channel.
- Third Press: Back to Aux 1 operation.

6. Transport

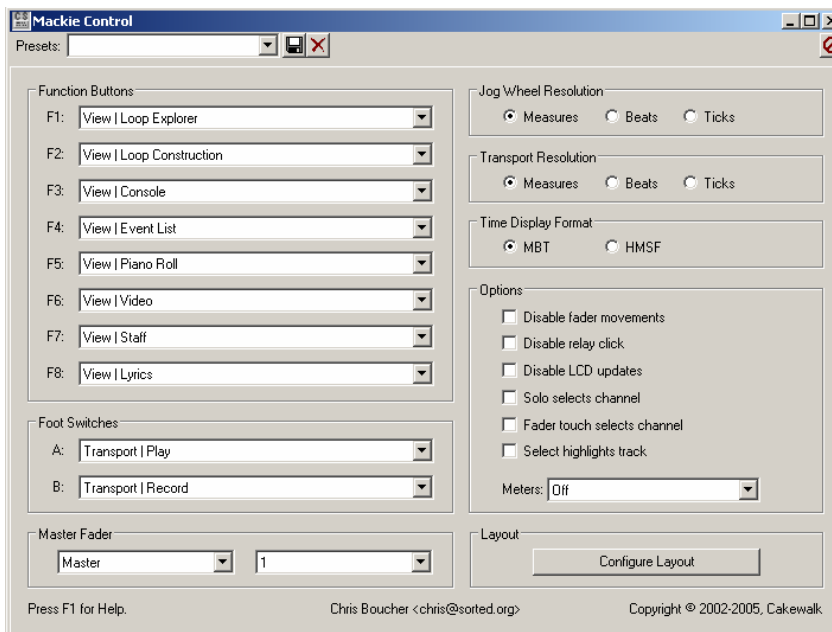
The table below provides an overview of the transport-related SONAR-ready functions.

DM-3200	Modifier	SONAR function	Note
Rewind		Rewind	Activates the Rewind and Slow rewind functions.
Fast forward		Fast forward	Activates the Fast Forward and Slow fast forward functions.
Stop		Stop	Activates the Stop function.
Play		Play	Activates the Play function.
Record		Record	Activates the Record function.
<BANK		< BANK	Moves control target tracks leftwards in groups of 16 tracks.
BANK>		BANK>	Moves control target tracks rightwards in groups of 16 tracks.
<LOCATE		<CHANNEL	Moves control target tracks leftwards track by one track.
LOCATE>		CHANNEL>	Moves control target tracks rightwards track by one track.
F1-8	CTRL	F1-8	Controls functions assigned to the F1-8 keys.

6.1 F1-8

Holding down CTRL and pressing the F1-8 keys allows you to use functions assigned to the SONAR's F-8 keys.

Click SONAR Tools > Mackie Control and the Mackie Control screen opens where you can configure function keys 1-8.



SONAR setup screen