

Handcrafted Amps for the 3rd Millennium

All-tube amps are our calling, and our passion for peerless performance sets the standards for all our products. But as tube amp history teaches, it takes much more than a fistful of thermionic valves to make a great amp. The magic is in the mix—the design, workmanship and quality of components and circuitry distinguish an ordinary amp from the kind of tube-driven cream machine guitarists expect from us.

Offering the best of both worlds, Custom Tube Series amps are handcrafted by well-trained, highly motivated technicians. They benefit from a blend of Old World artisanship and sophisticated 21st-century manufacturing and testing methods. Using cutting-edge, computer-assisted testing systems, we dramatically diminished tolerances and variances to attain unprecedented constancy in sound quality and reliability. When you opt for a Custom Tube Series device, you enjoy the peace of mind that comes with knowing your amp delivers precisely the spellbinding tone of the painstakingly engineered prototype. Despite boutique credentials such as hand-wired circuitry, Custom Series amps are anything but prima donnas. Rugged and reliable, these brutes are built to take a pounding and keep on sounding—great, that is. What more could the gigging guitarist want?

So much more than old tube designs dressed up in new finery, our Custom Tube amps are unique instruments for unique musicians, tailored to satisfy the discriminating demands of today's guitarists.

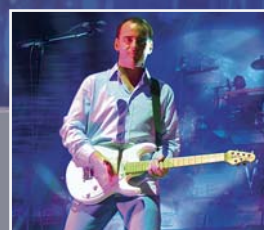


Developing the CTS was a dream come true to realize ultimate sounds in non compromise all tube technology. I play my TriAmp since day one (1995). It became my closest friend on tour and in the studio. Its sound turns me on every time again and again. This amp just makes myself and my Strat® happy.

Thomas Blug, Strat® King of Europe



Alex Lifeson, Rush



Rob Harris, Jamiroquai



Tommy Skeoch, Tesla



Thomas Blug, Strat® King

TriAmp MK II

A couple of opening bands were using “Hughes & Kettner Amps. I got tired of opening bands blowing my tone away. What are these guys doing that I don't know about? They used bunches of Hughes & Kettners. So I got interested in them.”

Chris Henderson, 3 Doors Down



C. Henderson, 3 Doors Down

Features

- 3 amps with 2 channels each:
Amp 1 A: Vintage Californian Clean
Amp 1 B: Vintage British Clean
Amp 2 A: Classic British Rock
Amp 2 B: Hot British Rock
Amp 3 A: Duotone Overdrive
Amp 3 B: Modern US Hi Gain
- TIGHT button on amp 1
- Dedicated controls on each amp:
Gain A, Gain B, Bass, Mid, Treble, Master
- Master section controls:
Presence and Master Volume
- Adjustable parallel effects loop;
switchable to serial mode
- Power amp: 4x EL34s 100 watts at 4,
8 or 16 Ohms
- Optional MIDI retrofit
(MIDI module MSM-1)
- 750 x 340 x 256 mm; 22 kg/49 lbs

13 Tubes for the Ultimate in Flexibility

The TriAmp® MKII is a grade-A, all-round amp. With its six precision-tuned channels and arsenal of features, it puts the perfect sound for every conceivable style at players' finger- and toe-tips.

Catering to guitarists seeking uncompromising all-tube performance and total flexibility, Hughes & Kettner® formulated an unprecedented concept that culminated in the TriAmp®. Now the days of carting an armada of amps and elaborate switching systems for the sake of stylistic versatility are over. The TriAmps's three dedicated all-tube amp sections and a built-in MIDI loop system deliver the definitive sound for every musical occasion. And because all this sound-shaping might comes in a package the size of a conventional amp head, the TriAmp® is also the totability stakes winner. Amp 1 is the first choice in crystalline Californian clean and spanking '60s British

sparkle. Aficionados in search of classic '70s and '80s rock tones will revel in Amp 2. Amp 3 is the go-to gain monster for metal masters. Amp 3's channel 1 serves up creamy, '90s-style lead tone. Channel 2, in turn, offers the carnivorous response “nu” rockers need to roar, particularly with dropped tunings. All six TriAmp® channels may be activated conveniently via the included Stageboard. The optional MSM-1 module brings MIDI capability to the TriAmp®, making it the nexus of a sophisticated sound system. Alongside remote channel switching capability, it adds programm-ability to the equation, for instance, to select FX loop mode (serial or parallel)!



incl. Stageboard

TriAmp
MK II

Features Head & Combo

- Overdrive and Clean channels with independent triple-band EQs
- Switchable boost in the Overdrive channel
- Master section controls: Presence, Master 1, Master 2, Effect
- Dual Master for 2 footswitchable output volume presets
- Adjustable parallel effects loop
- Power amp (head): 4 x EL34s / 100 watts at 4, 8 or 16 Ohms
- Power amp (combo): 2 x EL34s / 50 watts at 4, 8 or 16 Ohms
- Footswitch included
- Adjustable Spring Reverb (combo)
- 750 x 320 x 250 mm; 24 kg/53 lbs (head)
- 670 x 560 x 250 mm; 27 kg/60 lbs (combo)
- 1 x 12" Celestion® Vintage 30 (combo)

110% Classic Rock 'n' Roll

Twist all knobs clockwise as far as they will go to dial brawny bottom end, juicy mids, presence thick enough to slice, and fat, dynamic overdrive. That's the dinosaur sound that launched a thousand rock 'n' roll riffs in the 70s and 80s - and it's far from extinct.

But bands whose music relied on this brand of supercharged tone rarely played off-the-rack amps. Better tone, a bona fide effects loop and a second switchable master control—these were all hot-rod mods demanding the talents of amp tuning specialists. And the services of solder iron-wielding pros often cost more than the amp! That was then, this is now: With the Duotone®, Hughes & Kettner®

brings to the table an amp with a la carte features in a table d'hôte package. Its to-die-for tone is in the tradition of the great amp-tweaking gurus; its tube-driven effects loop and additional selectable master are a dream come true for many guitarists. And it offers something most amp tuners can't—an additional top-drawer clean channel.



Hughes & Kettner Amps just rock, with a great tone and fantastic loudness. They are just the best!
(Jimmy Coup, A.W.K Band)



Ritchie Sambora, Bon Jovi



Jimmy Coup, A.W.K Band

Duotone

Single Channel Class A- No forgiveness

The unabashedly purist Puretone delivers mind-boggling sound ranging from sinfully sweet to rude, raunchy and raucus.

The Puretone's class A circuitry is the shortest distance between the two points of guitar and speaker cabinet. Its no-nonsense wiring makes it one of the most responsive and articulate amps on the market. Uncompromising in every respect, this single-channel beast is uncluttered by unnecessary appointments. The potent Growl knob tapers off the no-frills three-band voicing section until it is bypassed altogether. Purist through and through, the amp ships without an effects loop. All this translates undiluted performance – primal, untamed and direct. It takes chops to tame the beast, but once mastered, this big cat purrs ever so sweetly. For a phenomenally gratifying playing experience and unprecedented powers of musical expression, choose Puretone.

The Puretone barks like a big dog, pumping out far more volume than one would expect from a 25-watt amp powered by 2 EL-34 tubes. Courtesy of an onboard power soak, its output can be cut by half – power, that is, and not volume! That way, you get to revel in the aural rapture of a class A power amp breaking up at pleasurable rather than painful levels.

Features Head & Combo

- One channel with smooth tapering triple-band EQ
- Class A power amp with 2 EL34 tubes
- 25 watts output
- Two-stage switchable power soak for power reduction
- Available in head and combo versions
- 1 x 12" Celestion® Vintage 30 (combo)
- 625 x 520 x 250 mm; 25 kg/55 lbs (combo)
- 625 x 320 x 260 mm; 17 kg/38 lbs (head)

“...We're having great fun with the amps. According to our front of house engineers, the Puretone has given Davey the best tone he's had... and that's after over 30 years of playing in this band!”

Rick Salazar,
Davey Johnstons Tech



Don Airey, Deep Purple



Davey Johnston, Elton John



Puretone