

Operation Manual GB

Benutzerhandbuch D

Fonctions Détaillées F

Manual de Operaciones E

オペレーションマニュアル J

ADVANCED INTEGRATION USB STUDIO

CI 2



EN
DE
FR
ES
JA

 **steinberg**

FCC INFORMATION (U.S.A.)

1. IMPORTANT NOTICE:

DO NOT MODIFY THIS UNIT!

This product, when installed as indicated in the instructions contained in this manual, meets FCC requirements. Modifications not expressly approved by Yamaha may void your authority, granted by the FCC, to use the product.

2. **IMPORTANT:** When connecting this product to accessories and/or another product use only high quality shielded cables. Cables supplied with this product **MUST** be used. Follow all installation instructions. Failure to follow instructions could void your FCC authorization to use this product in the USA.

3. **NOTE:** This product has been tested and found to comply with the requirements listed in FCC Regulations, Part 15 for Class "B" digital devices. Compliance with these requirements provides a reasonable level of assurance that your use of this product in a residential environment will not result in harmful interference with other electronic devices. This equipment generates/uses radio frequencies and, if not installed and used according to the instructions found in the users manual, may cause interference

harmful to the operation of other electronic devices. Compliance with FCC regulations does not guarantee that interference will not occur in all installations. If this product is found to be the source of interference, which can be determined by turning the unit "OFF" and "ON", please try to eliminate the problem by using one of the following measures:

Relocate either this product or the device that is being affected by the interference.

Utilize power outlets that are on different branch (circuit breaker or fuse) circuits or install AC line filter/s.

In the case of radio or TV interference, relocate/reorient the antenna. If the antenna lead-in is 300 ohm ribbon lead, change the lead-in to co-axial type cable.

If these corrective measures do not produce satisfactory results, please contact the local retailer authorized to distribute this type of product. If you can not locate the appropriate retailer, please contact Yamaha Corporation of America, Electronic Service Division, 6600 Orangethorpe Ave, Buena Park, CA90620

The above statements apply **ONLY** to those products distributed by Yamaha Corporation of America or its subsidiaries.

* This applies only to products distributed by YAMAHA CORPORATION OF AMERICA.

(class B)

COMPLIANCE INFORMATION STATEMENT (DECLARATION OF CONFORMITY PROCEDURE)

Responsible Party : Yamaha Corporation of America

Address : 6600 Orangethorpe Ave., Buena Park, Calif. 90620

Telephone : 714-522-9011

Type of Equipment : ADVANCED INTEGRATION USB STUDIO

Model Name : CI2

This device complies with Part 15 of the FCC Rules.

Operation is subject to the following two conditions:

- 1) this device may not cause harmful interference, and
- 2) this device must accept any interference received including interference that may cause undesired operation.

See user manual instructions if interference to radio reception is suspected.

* This applies only to products distributed by YAMAHA CORPORATION OF AMERICA.

(FCC DoC)

PRECAUTIONS

PLEASE READ CAREFULLY BEFORE PROCEEDING

* Please keep this manual in a safe place for future reference.



WARNING

Always follow the basic precautions listed below to avoid the possibility of serious injury or even death from electrical shock, short-circuiting, damages, fire or other hazards. These precautions include, but are not limited to, the following:

Do not open

- Do not open the device or attempt to disassemble the internal parts or modify them in any way. The device contains no user-serviceable parts. If it should appear to be malfunctioning, discontinue use immediately and have it inspected by qualified Yamaha service personnel.

Water warning

- Do not expose the device to rain, use it near water or in damp or wet conditions, or place containers on it containing liquids which might spill into any openings. If any liquid such as water seeps into the device, unplug the USB cable from this device immediately. Then have the device inspected by qualified Yamaha service personnel.
- Never insert or remove an electric plug with wet hands.

Fire warning

- Do not put burning items, such as candles, on the unit. A burning item may fall over and cause a fire.



CAUTION

Always follow the basic precautions listed below to avoid the possibility of physical injury to you or others, or damage to the device or other property. These precautions include, but are not limited to, the following:

Location

- Do not expose the device to excessive dust or vibrations, or extreme cold or heat (such as in direct sunlight, near a heater, or in a car during the day) to prevent the possibility of panel disfiguration or damage to the internal components.
- Do not use the device in the vicinity of a TV, radio, stereo equipment, mobile phone, or other electric devices. Otherwise, the device, TV, or radio may generate noise.
- Do not place the device in an unstable position where it might accidentally fall over.
- Before moving the device, remove all connected cables.

Connections

- Before connecting the device to other electronic components, turn off the power for all components. Before turning the power on or off for all components, set all volume levels to minimum. Also, be sure to set the volumes of all components at their minimum levels and gradually raise the volume controls while playing the device to set the desired listening level.

Maintenance

- When cleaning the device, use a soft, dry cloth. Do not use paint thinners, solvents, cleaning fluids, or chemical-impregnated wiping cloths.

Handling caution

- When turning on the AC power in your audio system, always turn on monitor speakers LAST, to avoid speaker damage. When turning the power off, monitor speakers should be turned off FIRST for the same reason.
- Do not insert a finger or hand in any gaps on the device.
- Never insert or drop paper, metallic, or other objects into the gaps on the panel. If this happens, turn off the power immediately and unplug the power cord from the AC outlet. Then have the device inspected by qualified Yamaha service personnel.
- Do not place vinyl, plastic or rubber objects on the device, since this might discolor the panel or keyboard.
- Do not rest your weight on, or place heavy objects on the device, and do not use excessive force on the buttons, switches or connectors.
- Do not use the instrument/device or headphones for a long period of time at a high or uncomfortable volume level, since this can cause permanent hearing loss. If you experience any hearing loss or ringing in the ears, consult a physician.

Yamaha cannot be held responsible for damage caused by improper use or modifications to the device, or data that is lost or destroyed.

Always unplug the USB cable from a computer or turn off the computer to turn off the device when the device is not in use.

SPECIAL NOTICES

- This manual is the exclusive copyrights of Yamaha Corporation.
- Use of the software and this manual is governed by the license agreement which the purchaser fully agrees to upon breaking the seal of the software packaging. (Please read carefully the Software Licensing Agreement at the end of this manual before installing the application.)
- Copying of the software or reproduction of this manual in whole or in part by any means is expressly forbidden without the written consent of the manufacturer.
- Yamaha Corporation makes no representations or warranties with regard to the use of the software and documentation and cannot be held responsible for the results of the use of this manual and the software.
- This disk containing the software is not meant for use with an audio/visual system (CD player, DVD player, etc.). Do not attempt to use the disk on equipment other than a computer.
- Future upgrades of application and system software and any changes in specifications and functions will be announced separately.
- The screen displays as illustrated in this manual are for instructional purposes, and may appear somewhat different from the screens which appear on your computer.
- Steinberg and Cubase are the registered trademarks of Steinberg Media Technologies GmbH.
- This product incorporates and bundles computer programs and contents in which Steinberg Media Technologies GmbH and Yamaha Corporation owns copyrights or with respect to which it has license to use others' copyrights. Such copyrighted materials include, without limitation, all computer software, style files, MIDI files, WAVE data, musical scores and sound recordings. Any unauthorized use of such programs and contents outside of personal use is not permitted under relevant laws. Any violation of copyright has legal consequences. **DON'T MAKE, DISTRIBUTE OR USE ILLEGAL COPIES.**
- Copying of the commercially available musical data including but not limited to MIDI data and/or audio data is strictly prohibited except for your personal use.
- Windows is a registered trademark of Microsoft® Corporation in the United States and other countries.
- Apple, Mac and Macintosh are trademarks of Apple Inc., registered in the U.S. and other countries.
- The company names and product names in this manual are the trademarks or registered trademarks of their respective companies.

Contents

Introduction	6
Features.....	6
Package Contents	6
About the Included Disks	7
About the power supply.....	8
Software Installation	9
Installing Cubase AI.....	9
Installing TOOLS for CI2.....	9
The Controls and Connectors	13
Front Panel.....	13
Rear Panel	17
Connecting to an External Device	18
Connection Examples	18
Options.....	18
Try it out	19
Preparing for using the CI2 with Cubase.....	19
Recording.....	20
Editing	22
Troubleshooting	23
Uninstalling the TOOLS for CI2	25
License Agreement for Software	26
License Agreement for TOOLS for CI2.....	26
License Agreement for Cubase AI.....	28
Appendix	32
General Specifications.....	32

Introduction

Thank you for your purchase of the ADVANCED INTEGRATION USB STUDIO CI2. Using Cubase, the CI2 is a highly intuitive, indispensable aid in recording, editing and sound shaping. Simply connect the CI2 to your computer via USB, and you've got a comprehensive control center and seamless environment for complete music production with Cubase.

Please read the Operation Manual (this book) so that you can take full advantage of its superlative features and enjoy trouble-free operation for years to come. Also keep it in a safe place for future reference.

Features

■ USB bus-powered

The CI2 can be simply connected to a USB terminal on your computer and can operate on USB bus power.

■ Phantom power (+48V) can be used

Phantom power can be supplied to two analog input jacks (XLR type).

■ Compatible with Core Audio (Mac OS X) and ASIO/WDM (Windows)

Using with a Core Audio/ASIO compatible DAW software application such as Cubase helps to reduce latency (sound delay).

■ Cubase AI DAW Software Supplied

Cubase AI software, included in this package, offers versatile, high-performance hard-disk recording capability.

■ Quick access to Cubase with the Browse mode

The Browse mode helps to create new projects and new tracks quickly on Cubase.

■ Quick recording with the Interactive Recording function

With the [Action Pad] button (or an optional Yamaha FC5 foot switch as an alternative), you can use the Interactive Recording function on Cubase. The Interactive Recording function provides easy and quick recording.

■ Controlling Cubase

The AI KNOB can control a desired parameter within the principal window and plug-in software on Cubase, specified via the mouse pointer.

Package Contents

The CI2 package contains the following items. After opening the CI2 package, make sure that it includes all of the items listed below.

- CI2
- CI2 Operation Manual (this book)
- USB Cable
- TOOLS for CI2 CD-ROM
- Cubase AI DVD-ROM

About the Included Disks

Disk Contents

Each of the included disks contains the following software (driver).

TOOLS for CI2 CD-ROM

- TOOLS for CI2

Cubase AI DVD-ROM

- Cubase AI

IMPORTANT

Before breaking the seal of these disk packages, please read carefully the Software License Agreement on pages 26 and 28 of this manual. By opening the each of disk packages, you indicate your agreement with the use terms of the software and concurrence with the Software License Agreement.

Special Notices



CAUTION

- Steinberg and Yamaha make no representations or warranties with regard to any problems while attempting to copy the disks or software and cannot be held responsible for the results of attempts to copy the data.
- These disks are NOT for audio/visual purposes. Do not attempt to play the disks on a CD/DVD player. Doing so may result in irreparable damage to your audio CD/DVD player.
- The software (Yamaha Steinberg USB Driver, Steinberg CI2 Extension) included in the TOOLS for CI2 and the copyrights thereof are under exclusive ownership by Yamaha.
- The software included in the Cubase AI DVD-ROM and the copyrights thereof are under exclusive ownership by Steinberg Media Technologies GmbH.
- Copying/reproduction of the software in whole or in part by any means is expressly forbidden without the written consent of the manufacturer.
- For the latest information of the software contained in the accessory disk, please see the site below:
Future upgrades of application and system software and any changes in specifications announced separately on the web site.
http://service.steinberg.de/goto.nsf/show/supportupdates_ci2_gb

System Requirements for Software

The system requirements below are necessary for installing software included in the accessory disks (TOOLS for CI2 and Cubase AI).

Windows

OS:	Windows XP Professional (SP3 or later)/ Windows XP Home Edition (SP3 or later)/ Windows Vista* (SP1 or later, 32-bit)
CPU:	Pentium/Athlon 2GHz or more (dual core CPU recommended)
Memory:	1GB or more
Display Resolution:	1280 x 800 — full color
Interface:	Equipped with a USB connector
Hard Disk:	Free disk space of 1GB or more; high-speed hard disk

*: The TOOLS for CI2 for Windows Vista 64-bit can be downloaded from the following address:
<http://www.steinberg.net>

Mac OS X

OS:	Mac OS X 10.5.5
CPU:	PowerPC G5 (Intel Core Duo CPU recommended)
Memory:	1GB or more
Display Resolution:	1280 x 800 — full color
Interface:	Equipped with a USB connector
Hard Disk:	Free disk space of 1GB or more; high-speed hard disk

NOTE

- A DVD drive is required for installation
- In order to have continuous use of Cubase AI, including support and other benefits, you will need to register the software and activate your software license by starting it while the computer is connected to the internet.
- Note that the system requirements may be slightly different from those described above depending on the particular operating system.
- The audio input and output functions of the CI2 also work properly on Mac OS X 10.4.11. Install TOOLS for CI2 to use the functions.

About the power supply

Power supply

The power of the CI2 is supplied only from the computer via a USB cable. A power cable is not necessary.

Precautions when using the USB connector

Be sure to observe the following points when connecting to the computer's USB interface. Failing to do so may result in the computer freezing or shutting down, as well as corruption or even loss of data. If the device or computer does freeze, restart the application or computer.

CAUTION

- **Be sure to wake the computer from sleep/suspended/standby mode before making a connection to the computer's USB connector.**
- **Always quit all applications running on the computer before connecting or disconnecting the USB cable.**
- **When connecting or disconnecting the USB cable, be sure to set the MASTER control to the minimum.**
- **Wait at least 6 seconds between connecting or disconnecting the USB cable.**

Software Installation

To use the CI2 you must first install the software on the computer. This section explains the software installation. Install Cubase AI before you install TOOLS for CI2.

NOTE

If you have already installed a version of Cubase that is compatible with operation with the CI2 (page 15), the instructions on installing Cubase AI described below are not necessary. Jump to the next section “Installing TOOLS for CI2.”

Installing Cubase AI

IMPORTANT

Before breaking the seal of the Cubase AI DVD-ROM package, please read carefully the Steinberg Software End User License Agreement (EULA) on page 28 of this manual. By opening the disk package, you indicate your agreement with the use terms of this software and concurrence with the Software License Agreement.

1. Start the computer and log on to the Administrator account.
2. Insert the Cubase AI DVD-ROM into the DVD-ROM drive.
3. When the “WELCOME TO CUBASE AI” window appears, choose your preferred language by clicking on the corresponding national flag icon.
4. Click “Install CUBASE AI.”
5. Follow the onscreen instructions to install the software.

NOTE

In order to have continuous use of Cubase AI, including support and other benefits, you will need to register the software and activate your software license by starting it while the computer is connected to the Internet. Click the “Register Now” button shown when the software is started, then fill in all required fields for registration. If you do not register the software, you will be unable to use it after a limited period of time expires.

Installing TOOLS for CI2

TOOLS for CI2 consists of two software components: Yamaha Steinberg USB Driver and Steinberg CI2 Extension. Yamaha Steinberg USB Driver enables communication between the CI2 and your computer. Using Steinberg CI2 Extension, you can link the CI2 with a Cubase version which supports the Link functions between both of them (page 15). The TOOLS for CI2 Installer installs these two software components. Follow the instructions below to install the components.

Windows Vista / Windows XP: page 10
Mac OS X: page 12

Windows Vista / Windows XP

Preparing to install 1 (Windows Vista / Windows XP)

1. **Disconnect all the devices other than the mouse and keyboard from the computer.**
2. **Start the computer and log on to the Administrator account.**
Exit any open applications and close all open windows.
3. **Select [Start] → ([Settings] →) [Control Panel], click “Switch to Classic View” in the upper left of the window.**

NOTE ⓘ

After completing the installation, make sure to restore the original settings if necessary.

Preparing to install 2 (Windows XP only)

For Windows Vista users, this setting is not necessary. Go on to step 6.

4. **Go to [System] → [Hardware] → [Driver Signing] → [Driver Signing Options], and select the radio button to the left of “Ignore – Install the software anyway and don't ask for my approval” and click [OK].**

NOTE ⓘ

After completing the installation, make sure to restore the original settings if necessary.

5. **Close the System Properties window by clicking the [OK] button or the Close button ([X]) to close the Control Panel.**

Software Installation (Windows Vista/Windows XP)

6. **Insert the TOOLS for CI2 CD-ROM into the CD-ROM drive.**
7. **Open the CD-ROM, then double-click the file “setup.exe.”**
A “Welcome to the InstallShield Wizard for TOOLS for CI2” window appears.
(Windows Vista) If the “User Account Control” window appears, click [Continue].
8. **Click [Next] to start the installation.**
To cancel the installation, click [Cancel].
9. **When a message appears indicating that Steinberg CI2 Extension has been installed, click [Finish].**
10. **When a window appears requiring you to restart your computer appears, follow the on-screen instructions to restart the computer.**
11. **Connect the CI2 directly to the computer (without using a hub) by using the included USB cable.**

Initial settings of driver (Windows XP only)

For Windows Vista users, the initial settings of the driver are set automatically. Go on to step 15.

12. The “Found New Hardware Wizard” window appears.

Some computers may take a while to display the window.

A dialog box may appear asking you whether you wish to connect to Windows Update. In this case, select the radio button to the left of “Not at this time,” then click [Next].

13. Select the radio button next to “Install the software automatically” then click [Next].

If a message “The software you are installing has not passed Windows Logo Testing” appears, click [Continue Anyway]. You do not need to abort the installation.

14. When a message appears indicating that the installation has been completed, click [Finish].

Confirming the installation (Windows Vista / Windows XP)

15. Select [Control Panel] from the Start menu.

16. Open the Device Manager window as follows.

(Windows Vista)

Double-click the Device Manager icon.

If the “User Account Control” window appears, click [Continue].

(Windows XP)

Double-click on the System icon to call up the System Properties window, then select the Hardware tab and click [Device Manager].

17. Click on the [+] mark next to “Sound, video and game controllers,” and confirm that “Steinberg CI2” is listed.

The installation is now complete.

Mac OS X

Software Installation

1. **Disconnect all the devices other than the mouse and keyboard from the computer.**
2. **Insert the TOOLS for CI2 CD-ROM into the CD-ROM drive of your computer.**
3. **Open the CD-ROM, then double-click the file “TOOLS for CI2.mpkg.”**
4. **A dialog box appears asking if you want to install the software. Click [Continue].**
The “Welcome to the TOOLS for CI2 Installer” window appears.
5. **Click [Continue].**
The “Installation Type” window appears.
6. **Click [Install].**
The “Authenticate” window appears.
7. **Enter the Administrator name and the password, then click [OK].**
A message appears prompting you to restart the computer after the installation.
8. **Click [Continue Installation]**
The “Install” window appears indicating the installation progress. When the installation is complete, the “Summary” window appears.
9. **Click [Restart] to restart the computer.**
10. **Connect the CI2 directly to the computer (without using a hub) by using the included USB cable.**

Confirming the installation

11. **From the hard disk to which the OS is installed (usually Macintosh HD), click [Applications] → [Utilities], then double-click [Audio MIDI Setup].**

The “Audio MIDI Setup” window appears.

12. **Click [Audio Devices], then select “Steinberg CI2” from the pull-down menu in [Properties For].**

The current audio settings are shown in the [Audio input] and [Audio Output] fields.

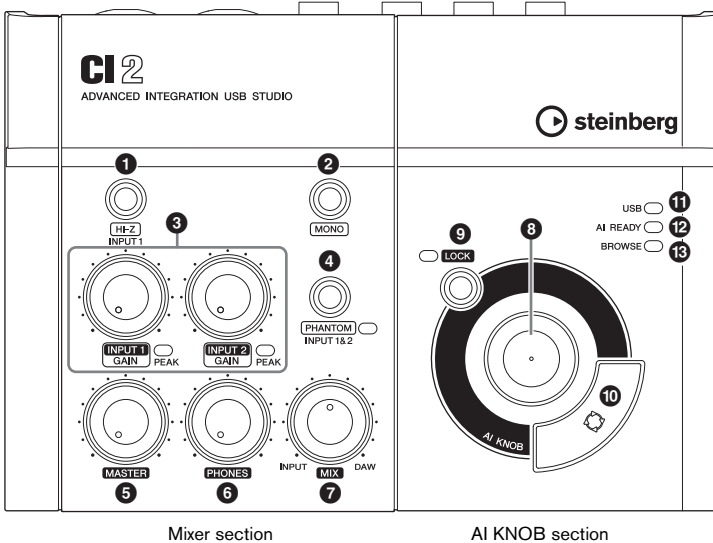
NOTE

By selecting “Steinberg CI2” for [Default Output] in System Settings, you can output audio signals of the system sounds and audio player software (e.g., iTunes, etc.) from the CI2.

The installation is now complete.

The Controls and Connectors

Front Panel



Mixer section

1 [HI-Z INPUT 1] button

This button switches the HI-Z on (☐) / off (■) for the analog input jack 1. When directly connecting an electric guitar or electric bass that has passive pickups and no built-in preamp to the analog input jack 1, turn the [HI-Z] button on.

NOTE

- Use an unbalanced phone cable when you connect an electric guitar or electric bass and turn the [HI-Z] button on. If you use a balanced cable or an XLR cable in such a case, this instrument will not work correctly.
- If a device is not connected to analog input jack 1, turn this button off. Otherwise noise may occur.

2 [MONO] button

This button allows analog input jacks 1 and 2 to be used either as separate mono channels or as a stereo pair. When the button is on (☐), analog input jacks 1 and 2 function as independent mono channels feeding both the L and R LINE OUT jacks. It is used to monitor the sound of the microphone or guitar connected to the analog input jack 1 in the center of the monitor speaker. When the button is off (■), analog input jack 1 and 2 function as a stereo pair: the analog input jack 1 signal feeds the L LINE OUT jack and the analog input jack 2 signal feeds the R LINE OUT jack. Switching this button on/off does not affect the signal sent to the computer.

③ INPUT 1/2 GAIN controls/PEAK Indicator

Adjusts the input signal level. The signal that has passed through the GAIN control will be sent to the computer. To achieve the best balance of the recording level between S/N ratio and dynamic range, adjust the level so that the PEAK Indicator lights only occasionally and briefly on the highest input transients.

④ [PHANTOM INPUT 1&2] button/Indicator

This button switches the phantom power (+48V) on (☐)/off (■). If you turn the button on, the CI2 supplies phantom power to the analog input jack 1 and 2 (XLR-type). The indicator lights when the button is turned on. Turn this button on when using a phantom-powered condenser microphone.



CAUTION

- Make sure that phantom power is turned OFF unless it is needed.
- When turning phantom power ON, make sure that no equipment other than phantom-powered devices such as condenser microphones are connected. Devices other than condenser microphones may be damaged if connected to the phantom power supply. Note, however, that the switch may be left on when connecting to balanced dynamic microphones. When connecting an unbalanced device to the analog input jacks (1/4" phone type) and phantom power is turned on, hum or noise may result; this is not a malfunction or failure in the device.
- Do not connect or disconnect a device while phantom power is applied. Doing so can damage the connected device and/or the unit itself.
- To protect your speaker system, leave the monitor speakers (powered speakers) turned off when switching the phantom power on/off. It's also a good idea turn all master control and output volume controls down to minimum. Neglect of these precautions may result in large noise bursts that may damage your equipment, your ears, or both.

⑤ MASTER control

Adjusts the signal level sent to the LINE OUT jacks. This allows you to adjust the overall volume without changing the relative volume balance among the channels. This control does not affect the signal sent to the computer.

⑥ PHONES control

Adjusts the signal level sent to the PHONES jack, since this output signal is not affected by the MASTER control.

⑦ MIX control (INPUT—DAW)

Adjusts the signal level balance between the signal from the analog input jacks and the signal from an application software, such as DAW. This control does not affect the signal sent to the computer.

AI KNOB section

The functions of the **8** AI KNOB, **9** [LOCK] button, and **10** [Action Pad] button differ according to the mode, Normal or Browse. Normal mode is the conventional mode. In Browse mode, you can use the button **8** AI KNOB, **9** [LOCK] button and **10** [Action Pad] button to navigate through Cubase windows, e.g. the Browse Sounds dialog. Below are explanations of the function in Normal mode. Refer to "The functions of AI KNOB section in the Normal mode and the Browse mode" on page 16 for explanations of the function in the Browse mode.

8 AI KNOB

Turning the AI KNOB

This multi-function knob can control a desired parameter within the principal window and plug-in software in Cubase, specified via the mouse pointer.

Pressing the AI KNOB

Opens certain windows in Cubase, such as the Browse Sounds window (while entering Browse mode in this case). For details, refer to the following table.

The status of Cubase	Window to be opened
Project has not been opened yet	Project Assistant
Project is opened	Browse Sounds window
Opening an active VST/VSTi plug-in window	Search & Viewer
Opening an Interactive Recording panel	Preset pop-up list

9 [LOCK] button/Indicator

You can "lock" the parameter to be edited via the AI KNOB by turning this button on. When you locate the mouse pointer to the desired parameter then turn the [LOCK] button on, the AI KNOB will control the "locked" parameter regardless of the mouse pointer's position. The [LOCK] indicator lights while the parameter is

locked. By turning the [LOCK] button off, you can unlock the parameter to be edited and the AI KNOB can then be used to edit another parameter to which the mouse pointer is located.

10 [Action Pad] button

This button is used for an Interactive Recording function on Cubase. When this button is pressed, the Interactive Recording panel is shown. If the display is already shown, pressing the button performs the registered functions in order. Two to six functions can be registered on the Interactive Recording panel.

11 USB Indicator

This indicator shows the communication state of CI2 and computer. The indicator lights when the CI2 is connected to the computer via a USB cable and communication with the computer is enabled.

12 AI READY Indicator

This indicator shows the communication state of CI2 and Cubase. The indicator lights when the Link functions are available.

IMPORTANT

To use the Link function between the CI2 and Cubase, you will need to install Cubase/Cubase AI version 5.1 or higher. For details, refer to the following website.

http://service.steinberg.de/goto.nsf/show/supportupdates_ci2_gb

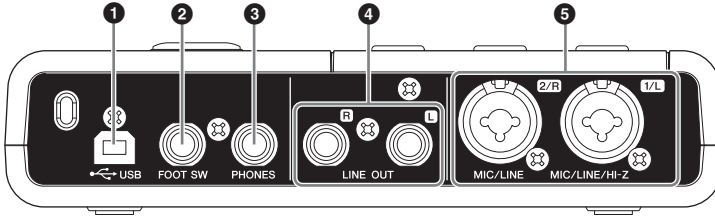
13 BROWSE Indicator

This indicator lights when a window in Cubase is opened, such as the Browse Sounds. The indicator lights in the Browse mode. It does not light in the Normal mode.

The functions of AI KNOB section in the Normal mode and the Browse mode

	Normal mode	BROWSE off BROWSE <input type="radio"/>	Browse mode	BROWSE on BROWSE <input checked="" type="radio"/>
Turning the AI KNOB	This multi-function knob can control a desired parameter within the principal window and plug-in software in Cubase, specified via the mouse pointer.		Moves the cursor. Turning the AI KNOB while holding down the [Action Pad] button lets you move the cursor to the next column (only for window having two or more columns).	
Pressing the AI KNOB	Opens certain windows in Cubase, such as the Browse Sounds window (while entering Browse mode in this case). See page 15 for details.			Turns the selected item on/off (only for window in which two or more items can be selected) or sets the selected item.
Pressing the [LOCK] button	You can "lock" the parameter to be edited via the AI KNOB by turning this button on. See page 15 for details.			Cancels the selected item and closes the window (returns to Normal mode). Holding down for two seconds or longer cancels all of the selected items (only for window in which two or more items can be selected).
Pressing the [Action Pad] button (pressing the foot switch)	This button is used for an Interactive Recording function on Cubase. See page 15 for details.		Moves the cursor to the next column (only for window having two or more columns).	

Rear Panel



1 USB terminal

This terminal is used to connect the CI2 and the computer by using the included USB cable.

2 FOOT SW jack

Connect an optional Yamaha FC5 foot switch to this jack. The connected foot switch operates the same as the [Action Pad] button.

3 PHONES jack

A pair of headphones can be plugged in here. This jack outputs the mixed signal from the analog input jacks and the signal from a DAW or other audio software. The output level can be adjusted using the PHONES control. This output signal is not affected by the MASTER control.

4 LINE OUT jacks L/R

These jacks would typically be connected to monitor speakers (powered speakers). These jacks output the mixed signal from the analog input jacks and the signal from a DAW or other audio software. The output level can be adjusted using the MASTER control.

NOTE

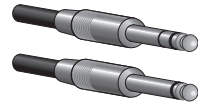
The volume balance between the analog input signal and the application software like DAW output signal can be adjusted using the MIX control.

5 MIC/LINE/Hi-Z jack 1/L (analog input jack 1/ MIC/LINE jack 2/R MIC/LINE/Hi-Z)

Microphones and instruments such as guitars can be connected here using XLR or phone jack cables. The signal received by these jacks is sent to the LINE OUT jacks and computer.




XLR-type



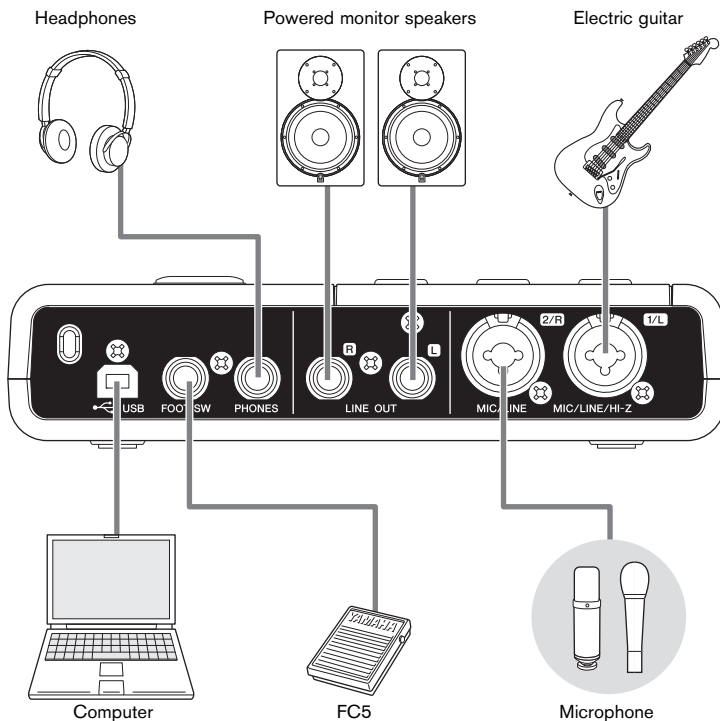
Phone-type
(1/4" TS or 1/4" TRS)

NOTE

You can directly connect an electric guitar or electric bass without the need for a separate DI box or amp simulator to analog input jack 1. In this case, turn on () the [HI-Z] button on the front panel. Make sure to use an unbalanced phone cable when you connect an electric guitar or electric bass. If you use a balanced cable, it will not work correctly.

Connecting to an External Device

Connection Examples



Options

Foot switch

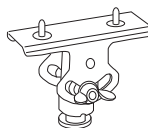
A Yamaha FC5 foot switch can be connected to the FOOT SW jack. The connected foot switch operates the same as the [Action Pad] button.



FC5

Microphone stand adaptor

A Yamaha BMS-10A microphone stand adaptor can be attached to the underside of the CI2. The CI2 attached with the microphone stand adaptor can then be used with a conventional microphone stand.



BMS-10A

Try it out

This section provides information on how to record and edit with Cubase. While going through this section you might find it useful to also refer to the “Controls and Functions” section, as well as the PDF documentation supplied with Cubase AI (Getting Started and Operation Manual, opened from the “Help” menu).

Preparing for using the CI2 with Cubase

You can make the configuration as follows.

1. Exit Cubase if it has already been started.

Cubase cannot recognize the CI2 if you connect the CI2 to the computer after starting Cubase. Make sure to start Cubase only after connecting the CI2 to the computer.

2. Connect the CI2 to the computer by using a USB cable.

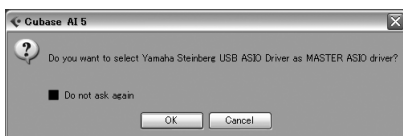


CAUTION

(Windows only) Make sure to use the same USB terminal as the one used in the installation procedure when you connect the CI2 to the computer again. If you connect the USB cable to a different terminal, you will have to install the Yamaha Steinberg USB Driver again.

3. Start Cubase on your computer.

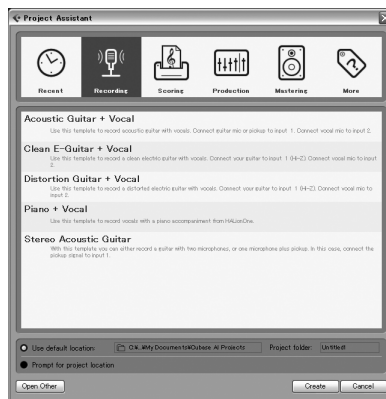
If the following dialog box is displayed while Cubase is starting, click [OK].



4. When the Project Assistant window is displayed, move the cursor to “Recording” by turning the AI KNOB, then press the [Action Pad] button.

NOTE

Pressing the [Action Pad] button moves the focus which can be operated by the AI KNOB to the next column or pane.



5. Move the cursor to the desired project template by turning the AI KNOB, then press the AI KNOB.

A project window will appear.

NOTE

- If you selected the “Prompt for project location” in the Project Assistant window, the “Set Project Folder” window will appear. Select a project folder by using the mouse, then click [OK].
- The AI READY indicator on the front panel lights, indicating that the computer recognizes the CI2 and the Link functions between the CI2 and Cubase are available.

Preparation for using the CI2 with Cubase is now complete.

Recording

With the [Action Pad] button (or an optional Yamaha FC5 foot switch as an alternative), you can use the Interactive Recording function on Cubase. The Interactive Recording function provides easy and quick recording. You can record your performance to Cubase with the Interactive Recording function by following the instructions below.

1. Connect external devices such as microphones and instruments to analog input jacks.



CAUTION

Before connecting external devices such as microphones and instruments, set the volume of external devices and monitor speakers (powered speakers) to the minimum. We also recommend that you set the MASTER control to the minimum and turn off (■) both the [HI-Z INPUT 1] button and [PHANTOM INPUT 1&2] button, to avoid risk of loud noises that could cause hearing loss or device damage.

2. Click in the track list (the area in which the track names are displayed) to select a track to record on.



3. Make sure the [Record Enable] button for the track to be recorded is turned on.

If the [Record Enable] button is off, click it to turn it on.

4. Play the instrument, and adjust the recording level with the CI2 GAIN controls.

To achieve the best balance of the recording level between S/N ratio and dynamic range, adjust the level so that the PEAK Indicator lights only occasionally and briefly on the highest input transients.

NOTE

- If the Clipping Indicator in the Transport panel on Cubase lights, lower the CI2 GAIN controls.
- The MIX control let you adjust the signal level balance between the signal from the analog input jacks and the signal from Cubase.

5. Press the [Action Pad] button.

The interactive Recording panel will appear.



NOTE

The connected optional Yamaha FC5 foot switch operates the same as the [Action Pad] button.

6. Press the [Action Pad] button.

Recording will begin since "Record" has been executed on the Interactive Recording panel.

7. Play the instrument.

NOTE

You can return to step 6 to abort and retry the recording by holding down the [LOCK] button for two seconds or longer.

8. When you finish recording the track, press the [Action Pad] button.

Recording will stop since "Stop" has been executed on the Interactive Recording panel.

9. Press the [Action Pad] button.

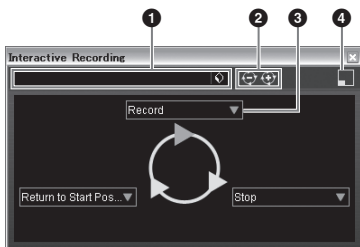
The project cursor will return to start position since "Return to Start Position" has been executed on the Interactive Recording panel.

To hear playback of the track you have just recorded, click the Transport panel [Play] button.

Recording operation is now complete.

TIP

You can also operate in the Interactive Recording panel as shown below.



- ❶ Saves and loads the sequence of actions.
- ❷ Increases and decreases the number of actions. The available number of actions is two through six.
- ❸ Changes the action to another action.
- ❹ Switches the panel to the small Interactive Recording panel. In the small panel, you can only load the sequence of actions.

TIP

Setting the audio driver buffer size

Noise produced when using applications such as DAW software can affect audio recording and/or playback. In most cases, you can solve these problems by adjusting the audio buffer size (Audio Buffer Size). The buffer size can usually be adjusted via the audio driver setup window in the application. (When using ASIO compatible software for Windows, the buffer size can be adjusted in the ASIO Buffer Size parameter via the Control Panel of the Yamaha Steinberg USB Driver.) While the higher buffer size reduces load to the computer CPU but produces latency (time lag) during recording/playback, the smaller buffer size may result in noise or the sound cutting off. Make sure to set the buffer size to an appropriate value depending on the performance of your computer, the number of audio/MIDI tracks being recorded/played back on the DAW software, the number of plug-in software, and so on.

Editing

The AI KNOB and [LOCK] button can be used to control Cubase. You can edit as follows.

AI KNOB

This multi-function knob can control a desired parameter within the principal window and plug-in software on Cubase, specified via the mouse pointer. In the following examples, we'll control the volume and panning parameter of the audio track on the mixer window.

1. **Click [Mixer] from the [Devices] menu.**
Mixer window will appear.
2. **Locate the mouse pointer to the volume or panning parameter of the audio track on the mixer window.**
3. **Turn the AI KNOB**

The AI KNOB will control the parameter on which the mouse pointer is located.

NOTE

The assignable parameters to the AI KNOB are parameters that can be automated within the principal window and plug-in software on Cubase. Plug-in software compatible with the AI KNOB are the VST 3 plug-ins included with Cubase (as of July 2009). For the latest information about compatible plug-in software, refer to the following URL:
http://service.steinberg.de/goto.nsf/show/supportupdates_ci2_gb

[LOCK] button

The [LOCK] button can “lock” the parameter to be edited via the AI KNOB. You can lock the parameter as follows.

1. **Locate the mouse pointer to the desired parameter then turn the [LOCK] button on.**
[LOCK] indicator will light.
2. **Move the mouse pointer to the other location.**

3. **Turn the AI KNOB**

The AI KNOB will control the “locked” parameter regardless of the mouse pointer's position. By turning the [LOCK] button off, you can unlock the parameter to be edited and the AI KNOB can then be used to edit another parameter to which the mouse pointer is located.

Editing operation is now complete.

Troubleshooting

The power of the device does not turn on.

- **Make sure that the CI2 is properly connected to the computer via a USB cable.**
The USB bus-power is necessary to use the CI2.
- **Confirm whether or not a proper USB cable is used.**
If the USB cable is broken or damaged, have the USB cable replaced with a known working one. Use a USB cable no longer than 1.5 meters.
- **Connect the CI2 to a computer without a USB hub.**

No sound.

- **Make sure that the MASTER/PHONES controls are set to the minimum.**
- **Are your speaker cables connected properly?**
Refer to "Connection Examples" on page 18.
- **Are your speaker cables shorted?**
- **Are the volume controls of your sources, audio devices, applications software, computer operating system, etc., set at appropriate levels?**
- **(Windows only) Is the output of your computer operating system muted?**
- **Do you have several applications running at the same time?**
Be sure to quit all applications you are not using.

The sound is intermittent or distorted.

- **Is the PEAK indicator flashing red?**
You might have to lower GAIN control level to avoid distortion.
- **Does your computer satisfy the system requirements?**
Refer to "System Requirements" on page 7.
- **Are any other applications, device drivers, or USB devices (scanners, printers, etc.) running at the same time?**
Be sure to quit all applications you are not using.
- **Are you playing back a large number of audio tracks?**
The number of tracks you can play at the same time will depend on the performance of the computer you are using. You may experience intermittent playback if you exceed your computer's capabilities.
- **Are you recording or playing long continuous sections of audio?**
The audio data processing capabilities of your computer will depend on a number of factors including CPU speed and access to external devices.

Cubase does not recognize the CI2.

- **Make sure that the CI2 is properly connected to the computer via a USB cable.**

- **Confirm whether or not a proper USB cable is used.**

If the USB cable is broken or damaged, have the USB cable replaced with a known working one. Use a USB cable no longer than 1.5 meters.

- **Confirm whether or not the CI2 is connected to the computer before starting Cubase.**

- **Confirm whether or not the “Yamaha Steinberg USB Driver” and “Steinberg CI2 Extension” have been installed.**

If not, install them.

- **Confirm whether or not a version of Cubase that is compatible with operation with the CI2 (page 15) has already been installed.**

- **Make sure that CI2 is selected as the port setting on Cubase.**

The port is described in the Device Setup window (called up via [Device Setup...] under the [Devices] menu) when selecting “Steinberg CI2” under “Remote Devices” in the Devices box.

- **Confirm whether or not the Remote Control settings on Cubase are proper.**

Refer to the PDF manual (open from the “Help” menu) supplied with the Cubase AI software.

- **Make sure that there is no check mark in “In ‘All MIDI Inputs’” for CI2 MIDI port on the “MIDI Port Setup” window (called up via [Device Setup...] under the [Devices] menu.)**

- **Are you connecting the Steinberg CC121 and the CI2 simultaneously with one computer?**

If you are connecting the Steinberg CC121 and the CI2 simultaneously with one computer, the AI KNOB, [LOCK] button and [Action Pad] button on the CI2 cannot be used.

Uninstalling the TOOLS for CI2

To uninstall TOOLS for CI2, you must remove the following two software components.

- Yamaha Steinberg USB Driver
- Steinberg CI2 Extension

Windows Vista / Windows XP

- 1. Disconnect all other USB devices except mouse and keyboard from the computer.**

- 2. Log on to the Administrator account.**

Exit any open applications and close all open windows.

- 3. Open the window for the uninstall operation as follows.**

(Windows Vista)

From the Start menu, select [Control Panel] → [Programs and Features] to call up the “Uninstall or change a program” panel.

(Windows XP)

From the Start menu, select ([Settings] → [Control Panel] → [Add or Remove Programs] to display the Add or Remove Programs panel. Click “Change or Remove Programs” located in the upper left.

- 4. Select “Yamaha Steinberg USB Driver,” “Steinberg CI2 Extension” from the list.**

- 5. Uninstall them as follows.**

(Windows Vista)

Click the [Uninstall]/[Uninstall/Change].

If the “User Account Control” window appears, click [Continue].

Follow the on-screen instructions to remove the software.

(Windows XP)

Click [Change/Remove]/[Remove].

Follow the on-screen instructions to remove the software.

Mac OS X

Removing Yamaha Steinberg USB Driver

Remove the following folders and files from the boot disk (usually Macintosh HD).

```

/System/Library/Extensions
    YamahaSteinbergUSBAudio.kext
/Application/Yamaha/USBDriver/
    Yamaha Steinberg USB Control Panel.app
/Library/PreferencePanes/
    Yamaha Steinberg USB.prefPane
/Library/Preferences/
    com.yamaha.YamahaSteinbergUSBDriver.plist
/Library/Audio/MIDI Drivers/
    YamahaSteinbergUSBMIDI.plugin
/Library/Audio/MIDI Devices/Yamaha/Images/
    USB_1500.tiff
/Library/Receipts/
    YamahaSteinbergUSBAudioDriver.pkg
    YamahaSteinbergUSBControlPanel.pkg
    YamahaSteinbergUSBDriverplist.pkg
    YamahaSteinbergUSBMIDIPlugIn.pkg
    YamahaSteinbergUSBMIDIIcon.pkg
    YamahaSteinbergUSBPrefPane.pkg
  
```

Removing Steinberg CI2 Extension

Remove the following folders and files from the boot disk (usually Macintosh HD).

```

/Library/Application Support/Steinberg/Components/
    ci2_extension_u.bundle
/Library/Application Support/Yamaha/
    InteractiveRecording
/Library/Receipts/
    Steinberg CI2 Extension.pkg
  
```

License Agreement for Software

License Agreement for TOOLS for CI2

ATTENTION SOFTWARE LICENSE AGREEMENT

PLEASE READ THIS SOFTWARE LICENSE AGREEMENT ("AGREEMENT") CAREFULLY BEFORE USING THIS SOFTWARE. YOU ARE ONLY PERMITTED TO USE THIS SOFTWARE PURSUANT TO THE TERMS AND CONDITIONS OF THIS AGREEMENT. THIS AGREEMENT IS BETWEEN YOU (AS AN INDIVIDUAL OR LEGAL ENTITY) AND YAMAHA CORPORATION ("YAMAHA").

BY BREAKING THE SEAL OF THIS PACKAGE YOU ARE AGREEING TO BE BOUND BY THE TERMS OF THIS LICENSE. IF YOU DO NOT AGREE WITH THE TERMS, DO NOT INSTALL, COPY, OR OTHERWISE USE THIS SOFTWARE.

1. GRANT OF LICENSE AND COPYRIGHT

Yamaha hereby grants you the right to use one copy of the software program(s) and data ("SOFTWARE") accompanying this Agreement. The term SOFTWARE shall encompass any updates to the accompanying software and data. The SOFTWARE is owned by Yamaha and/or Yamaha's licensor(s), and is protected by relevant copyright laws and all applicable treaty provisions. While you are entitled to claim ownership of the data created with the use of SOFTWARE, the SOFTWARE will continue to be protected under relevant copyrights.

- **You may** use the SOFTWARE on a **single computer**.
- **You may** make one copy of the SOFTWARE in machine-readable form for backup purposes only, if the SOFTWARE is on media where such backup copy is permitted. On the backup copy, you must reproduce Yamaha's copyright notice and any other proprietary legends that were on the original copy of the SOFTWARE.
- **You may** permanently transfer to a third party all your rights in the SOFTWARE, provided that you do not retain any copies and the recipient reads and agrees to the terms of this Agreement.

2. RESTRICTIONS

- **You may not** engage in reverse engineering, disassembly, decompilation or otherwise deriving a source code form of the SOFTWARE by any method whatsoever.

- **You may not** reproduce, modify, change, rent, lease, or distribute the SOFTWARE in whole or in part, or create derivative works of the SOFTWARE.
- **You may not** electronically transmit the SOFTWARE from one computer to another or share the SOFTWARE in a network with other computers.
- **You may not** use the SOFTWARE to distribute illegal data or data that violates public policy.
- **You may not** initiate services based on the use of the SOFTWARE without permission by Yamaha Corporation.

Copyrighted data, including but not limited to MIDI data for songs, obtained by means of the SOFTWARE, are subject to the following restrictions which you must observe.

- Data received by means of the SOFTWARE may not be used for any commercial purposes without permission of the copyright owner.
- Data received by means of the SOFTWARE may not be duplicated, transferred, or distributed, or played back or performed for listeners in public without permission of the copyright owner.
- The encryption of data received by means of the SOFTWARE may not be removed nor may the electronic watermark be modified without permission of the copyright owner.

3. TERMINATION

This Agreement becomes effective on the day that you receive the SOFTWARE and remains effective until terminated. If any copyright law or provisions of this Agreement is violated, the Agreement shall terminate automatically and immediately without notice from Yamaha. Upon such termination, you must immediately destroy the licensed SOFTWARE, any accompanying written documents and all copies thereof.

4. LIMITED WARRANTY ON MEDIA

As to SOFTWARE sold on tangible media, Yamaha warrants that the tangible media on which the SOFTWARE is recorded will be free from defects in materials and workmanship under normal use for a period of fourteen (14) days from the date of receipt, as evidenced by a copy of the receipt. Yamaha's entire liability and your exclusive remedy will be replacement of the defective media if it is returned to Yamaha or an

authorized Yamaha dealer within fourteen days with a copy of the receipt. Yamaha is not responsible for replacing media damaged by accident, abuse or misapplication. TO THE FULLEST EXTENT PERMITTED BY LAW, YAMAHA EXPRESSLY DISCLAIMS ANY IMPLIED WARRANTIES ON THE TANGIBLE MEDIA, INCLUDING THE IMPLIED WARRANTIES OF MERCHANTABILITY AND FITNESS FOR A PARTICULAR PURPOSE.

5. DISCLAIMER OF WARRANTY ON SOFTWARE

You expressly acknowledge and agree that use of the SOFTWARE is at your sole risk. The SOFTWARE and related documentation are provided "AS IS" and without warranty of any kind. NOTWITHSTANDING ANY OTHER PROVISION OF THIS AGREEMENT, YAMAHA EXPRESSLY DISCLAIMS ALL WARRANTIES AS TO THE SOFTWARE, EXPRESS, AND IMPLIED, INCLUDING BUT NOT LIMITED TO THE IMPLIED WARRANTIES OF MERCHANTABILITY, FITNESS FOR A PARTICULAR PURPOSE AND NON-INFRINGEMENT OF THIRD PARTY RIGHTS. SPECIFICALLY, BUT WITHOUT LIMITING THE FOREGOING, YAMAHA DOES NOT WARRANT THAT THE SOFTWARE WILL MEET YOUR REQUIREMENTS, THAT THE OPERATION OF THE SOFTWARE WILL BE UNINTERRUPTED OR ERROR-FREE, OR THAT DEFECTS IN THE SOFTWARE WILL BE CORRECTED.

6. LIMITATION OF LIABILITY

YAMAHA'S ENTIRE OBLIGATION HEREUNDER SHALL BE TO PERMIT USE OF THE SOFTWARE UNDER THE TERMS HEREOF. IN NO EVENT SHALL YAMAHA BE LIABLE TO YOU OR ANY OTHER PERSON FOR ANY DAMAGES, INCLUDING, WITHOUT LIMITATION, ANY DIRECT, INDIRECT, INCIDENTAL OR CONSEQUENTIAL DAMAGES, EXPENSES, LOST PROFITS, LOST DATA OR OTHER DAMAGES ARISING OUT OF THE USE, MISUSE OR INABILITY TO USE THE SOFTWARE, EVEN IF YAMAHA OR AN AUTHORIZED DEALER HAS BEEN ADVISED OF THE POSSIBILITY OF SUCH DAMAGES. In no event shall Yamaha's total liability to you for all damages, losses and causes of action (whether in contract, tort or otherwise) exceed the amount paid for the SOFTWARE.

7. THIRD PARTY SOFTWARE

Third party software and data ("THIRD PARTY SOFTWARE") may be attached to the SOFTWARE. If, in the written materials or the electronic data accompanying the Software, Yamaha identifies any software and data as THIRD PARTY SOFTWARE, you acknowledge and agree that you must abide by the provisions of any Agreement provided with the THIRD PARTY SOFTWARE

and that the party providing the THIRD PARTY SOFTWARE is responsible for any warranty or liability related to or arising from the THIRD PARTY SOFTWARE. Yamaha is not responsible in any way for the THIRD PARTY SOFTWARE or your use thereof.

- Yamaha provides no express warranties as to the THIRD PARTY SOFTWARE. IN ADDITION, YAMAHA EXPRESSLY DISCLAIMS ALL IMPLIED WARRANTIES, INCLUDING BUT NOT LIMITED TO THE IMPLIED WARRANTIES OF MERCHANTABILITY AND FITNESS FOR A PARTICULAR PURPOSE, as to the THIRD PARTY SOFTWARE.
- Yamaha shall not provide you with any service or maintenance as to the THIRD PARTY SOFTWARE.
- Yamaha is not liable to you or any other person for any damages, including, without limitation, any direct, indirect, incidental or consequential damages, expenses, lost profits, lost data or other damages arising out of the use, misuse or inability to use the THIRD PARTY SOFTWARE.

8. GENERAL

This Agreement shall be interpreted according to and governed by Japanese law without reference to principles of conflict of laws. Any dispute or procedure shall be heard before the Tokyo District Court in Japan. If for any reason a court of competent jurisdiction finds any portion of this Agreement to be unenforceable, the remainder of this Agreement shall continue in full force and effect.

9. COMPLETE AGREEMENT

This Agreement constitutes the entire agreement between the parties with respect to use of the SOFTWARE and any accompanying written materials and supersedes all prior or contemporaneous understandings or agreements, written or oral, regarding the subject matter of this Agreement. No amendment or revision of this Agreement will be binding unless in writing and signed by a fully authorized representative of Yamaha.

License Agreement for Cubase AI

Steinberg Software End User License Agreement (EULA)

General

All intellectual property rights in the software belong to Steinberg Media Technologies GmbH (hereinafter: "Steinberg") and its suppliers. Steinberg permits you only to copy, download, install and use the software in accordance with the terms and conditions of this Agreement. **The product may contain product activation for protection against unlawful copying which permits a permanent use of the software only after the activation process has been totally completed.** The software can be used only together with the USB-eLicensor and/or the Soft-eLicensor; the OEM software can be used only following registration and Trial Version Software can be used only for a running time of 30 days. You are only entitled to support and the right to upgrades or updates following a personal product registration; however, not for Trial Version Software. Internet access is required for the activation process.

The terms and conditions for use of Steinberg software / hardware by you, the end user (hereinafter termed "Licensee") appear below. By installing the software on your computer you agree to these terms and conditions. Please read the following text carefully in its entirety. If you do not approve these terms and conditions, you must not install this software.

In this event give back the product back to where you have purchased it (inc. all written material, the complete undamaged packing as well as the enclosed hardware) immediately but at the latest within 14 days in return for a refund of the purchase price.

1 Definitions

- 1.1 „Software“ includes (i) software files and other computer information of Steinberg and third parties, (ii) demo songs and audio and video files contained therein, (iii) written documentation (manual) belonging thereto and (iv) all modified versions and copies, which are provided by Steinberg in the form of updates, upgrades, patches and enhancements of Steinberg provided that these are not regulated by another agreement.
- 1.2 The software and all authorized copies of this software which you make are the intellectual property of Steinberg Media Technologies GmbH (hereinafter: "Steinberg") and their suppliers. The structure, organization and code of the software constitute valuable trade secrets of Steinberg and their suppliers. The software is legally protected in particular by the copyright law of the Federal Republic of Germany and other countries as well as by international treaties.

2 Grant of License

- 2.1 Steinberg grants you a non-exclusive license for the use of the software according to the terms and conditions of this Agreement. You may not lease, loan or sublicense the software.
- 2.2 The samples of so-called Loops remain the property of the respective rights holder (Big Fish Audio, Inc. and other licensors) and are licensed by Steinberg to you only for use in the creation of a live or recorded performance that includes the licensed samples as part of a derivative musical work created by the licensed end user. This license includes the use of the samples, the modification of the samples and the marketing of the derivative musical work without infringing any rights of copyright collecting societies and/or the owners of copyrights in any samples. The samples may not be included, whether unmodified or as part of a derivative work, in any sample library product.
- 2.3 If the software is protected by the USB-eLicensor alone, you may install a license for the software on one or at most 3 computers which are in your possession. The software may be used only on one of the computers at the same time by using the USB-eLicensor. If the software (i) is protected by the Soft eLicensor (alone or together with the USB-eLicensor) or (ii) has been sold to the first end user together with other software and/or hardware (hereinafter: "OEM software") or (iii) the software can be used only for a running time of 30 days (hereinafter: "Trial Version Software"), you may install and use a license for the software only on one computer which is in your possession.
- 2.4 The use of the software within a network is illegal where there is the possibility of a contemporaneous multiple use of the program.
- 2.5 You are entitled to prepare a backup copy of the software which will not be used for purposes other than storage purposes.
- 2.6 You shall have no further right or interest to use the software other than the limited rights as specified in this Agreement. Steinberg and their suppliers reserve all rights not expressly granted.
- 2.7 For Steinberg products including Fraunhofer mp3 coding technology, the following reference from Thomson Licensing S.A. is effective: Supply of this product does not convey a license nor imply any right to distribute content created with this product in revenue-generating broadcast systems (terrestrial, satellite, cable and/or other distribution channels), streaming applications (via Internet, intranets and/or other networks), other content distribution systems (pay-audio or audio-on-demand applications and the like) or on physical media (compact discs, digital versatile discs, semiconductor chips, hard drives, memory cards and the like). An independent license for such use is required. For details please visit <http://mp3licensing.com>

3 Activation of the Software

- 3.1 Steinberg may use a compulsory activation of the software and a compulsory product registration of the OEM software for license control to protect the software against unlawful copying. If you do not accept the terms and conditions of this Agreement, the software will not work.
- 3.2 In such a case the product including the software may only be returned within 14 days following acquisition of the product. Upon return a claim according to § 11 shall not apply.

4 Support, Upgrades and Updates after Product Registration

- 4.1 You can only receive support, upgrades and updates following the personal product registration. Support is provided only for the current version and for the previous version during one year after publication of the new version. Steinberg can modify and partly or completely adjust the extent of the support (hotline, fora on the website etc.), upgrades and updates at any time. In case of Trial Version Software, there exists no product registration or any support, upgrades or updates.
- 4.2 The product registration is possible during the activation process or at any time later through the Internet. In such a process you are asked to agree to the storage and use of your personal data (name, address, contact, email-address, date of birth and license data) for the purposes specified above. Steinberg may also forward these data to engaged third parties, in particular distributors, for support purposes and for the verification of the upgrade or update right.
- 4.3 If you provide an address outside the EU, the data also can be transferred to third parties in countries which do not ensure an adequate level of data protection comparable to that applying within the EU.

5 Licence module (USB-eLicenser / or Soft eLicenser)

- 5.1 Steinberg uses a hardware device connected through the USB connection of a computer (hereinafter "USB-eLicenser") and/or a protection scheme (hereinafter "Soft eLicenser") for license control (hardware and/or software licenser) in the case of many products. The USB-eLicenser and/or Soft eLicenser permanently saves the license information and regulates access to the software. If a USB-eLicenser is required for the use of the software, then the USB-eLicenser must be connected physically to the computer through the USB interface.
- 5.2 For the activation of the software, updates or upgrades of the software the computer which is connected to the USB-eLicenser and/or using the Soft eLicenser or using the OEM software must be connected to the server of Steinberg through the Internet. If the product was delivered with the USB-eLicenser, the license information was already transferred to the USB-eLicenser. If the product was delivered with a product card (without the USB-eLicenser), the activation codes of the enclosed product card must be entered manually by the user upon installation and the license information must be exchanged with the server of Steinberg.
- 5.3 In the event of OEM software, the activation codes will be sent to an email-address submitted by you during a regis-

tration. Further, the activation codes must be entered manually by the user upon installation and the license information must be exchanged with the server of Steinberg.

- 5.4 The reinstallation of the software - on the same or another computer - is permitted only in case the already installed software cannot be used any more (e.g. following deinstallation). If the software does not use a USB-eLicenser, but requires activation codes, the new activation codes may be obtained from the user's online account for support created during the personal product registration. Further, the activation codes must be entered manually by the user upon installation and the license information must be exchanged with the server of Steinberg. Steinberg may require for the provision of further activation codes e.g. your proof of purchase (invoice, receipt) and a signed assurance by fax or letter stating your name, address and that the already installed software cannot be used any more. Trial Version Software can be used on a computer also at reinstallation only altogether 30 days.
- 5.5 You can also use another computer other than the one on which the software is to be installed for the activation and transfer of license data to the USB-eLicenser, if the software is using a USB-eLicenser. However, in such a case a corresponding access software (eLicenser Control Centre, "eLCC") must be installed on the computer connected to the Internet, which is subject to a separate licensing agreement.

6 Defect and loss of the USB-eLicenser

- 6.1 In the case of a defect or damage to the USB-eLicenser Steinberg or a third party engaged by Steinberg will check the USB-eLicenser. In the case of a legitimate claim the USB-eLicenser and the licenses included shall be replaced in return for a handling fee. The licenses will only be replaced provided that they are licenses issued by Steinberg. Further claims against Steinberg are excluded.
- 6.2 Steinberg assumes no liability or obligation if the USB-eLicenser is mislaid as a result of loss, theft or otherwise. Steinberg reserves the right to block the licenses saved on the USB-eLicenser upon being notified by the registered user of the loss. The licenses saved on the USB-eLicenser cannot be replaced.

7 Modification of the software

- 7.1 A modification of the software is permitted only insofar as far as the software is capable of such modification in accordance with its intended function. You may not decompile, disassemble, carry out reverse engineering or try in another manner to determine the source code of the software, unless this is permitted by law. Furthermore, you must not modify the binary code of the software to bypass in any manner the activation function or the use of the license module (USB-eLicenser and/or Soft eLicenser).

8 No Unbundling

- 8.1 The software usually contains a variety of different files which in its configuration ensure the complete functionality of the software. The software may be used as one product only. It is not required that you use or install all components of the software. You must not arrange components of the software in a new way and develop a modi-

fied version of the software or a new product as a result. The configuration of the software may not be modified for the purpose of distribution, assignment or resale.

- 8.2 You may also not sell the USB-eLicenser separately as a license; the usage rights always remain with the software, in particular with the original software data carrier (e.g. CD).

9 Assignment of Rights

- 9.1 You may assign all your rights to use the software to another person subject to the conditions that (a) you assign to this other person (i) this Agreement and (ii) the software or hardware provided with the software, packed or reinstalled thereon, including all copies, upgrades, updates, backup copies and previous versions, which granted a right to an update or upgrade on this software, (b) you do not retain upgrades, updates, backup copies and previous versions of this software and (c) the recipient accepts the terms and conditions of this Agreement as well as other regulations pursuant to which you acquired a valid software license.
- 9.2 A return of the product due to a failure to accept the terms and conditions of this Agreement, e.g. the product activation, shall not be possible following the assignment of rights.

10 Upgrades and Updates

- 10.1 You must have a valid license for the previous or more inferior version of the software in order to be allowed to use an upgrade or update for the software; the Trial Version Software, however, does not entitle to the upgrade or update. Upon transferring this previous or more inferior version of the software to third parties the right to use the upgrade or update of the software shall expire.
- 10.2 The acquisition of an upgrade or update does not in itself confer any right to use the software.
- 10.3 The right of support for the previous or inferior version of the software expires upon the installation of an upgrade or update.

11 Limited Warranty ("Gewährleistung")

- 11.1 The warranty ("Gewährleistung") for you as first buyer of the software located within the European Union (EU) is specified in Subsection 11.2 and the warranty for you as first buyer of the software located outside the EU is specified in Subsection 11.3 of this Agreement.
- 11.2 **Limited Warranty within the EU:** In the event that you as a first buyer of the software are located within the EU, the following limitation of liability shall apply.
- 11.2.1 If Steinberg has sold the software directly to you as an end user, Steinberg warrants ("gewährleistet") that the software essentially executes the functions described in the enclosed documentation upon receipt, provided that the software is employed in accordance with the minimum requirements for the operating system and the computer hardware. Insignificant divergences from the functions described in the documentation do not give rise to any warranty claim. Other documents and statements are unremarkable for the composition of the product.

11.2.2 If the user is consumer within the EU, the statutory warranty ("Gewährleistung") to defects of the product shall apply. If the user is a businessman, Steinberg provides warranty for defects of the product at its discretion by further fulfillment (improvement or substitute delivery) within one year. However, there exists no warranty for Trial Version Software.

- 11.3 **Limited Warranty outside the EU:** In the event that you as a first buyer of the software are located outside the EU, the following limitation of liability shall apply.
- 11.3.1 Steinberg ensures ("gewährleistet") to the person who acquires first-time the license for the use of the software according to this Agreement, for the duration of ninety (90) days as of receipt of the software, that the software executes essentially the functions described in the enclosed documentation at receipt, provided that the software is employed according to the minimum requirements for the operating system and the computer hardware. Insignificant differences of the functions described in the documentation do not justify any warranty claim. Other documents and statements are insignificant in terms of the quality of the product.
- 11.3.2 If the software does not essentially fulfill the functions described in the documentation, your only warranty claim against Steinberg and Steinberg's only obligation consists in an exchange of the software or a refund of the selling price at the discretion of Steinberg.
- 11.3.3 Further warranty obligations according to the laws of your country remain unaffected. However, there exists no warranty for Trial Version Software.

12 Limitation of Liability

- 12.1 The limitation of liability for you as first buyer of the software located within the EU is specified in Subsection 12.2 and the limitation of liability for you as first buyer of the software located outside the EU is specified in Subsection 12.3 of this Agreement.
- 12.2 **Limitation of Liability within the EU:** In the event that you as a first buyer of the software are located within the EU, the following limitation of liability shall apply.
- 12.2.1 Irrespective of the legal grounds Steinberg shall only be liable to compensate or replace futile expenses in accordance with the following stipulations.
- 12.2.2 Steinberg shall be liable for damages caused by the intentional or grossly negligent conduct of Steinberg, its legal representatives, managerial employees or any other vicarious agents and damages arising from death, bodily damage and damage to health from the assumption of a guarantee or from a procurement risk as well as Steinberg's liability for damages pursuant to the Product Liability Act (Produkthaftungsgesetz). In the case of damage caused by the grossly negligent conduct of any other vicarious agents, the liability shall be limited to those damages which are typically to be expected within the scope of an agreement such as the present one. Any further liability under this Agreement shall be excluded.

- 12.2.3 In the case of damage caused neither by intentional nor by the grossly negligent conduct of Steinberg, Steinberg shall only be liable where an obligation is violated, the fulfillment of which is of particular significance to the achievement of the contractual purpose (cardinal obligation). In this case, the restrictions of liability pursuant to the foregoing subsection 12.2.2 sentences 2 and 3 shall apply. In case of Trial Version Software, the liability for damages according to this subsection shall be excluded.
- 12.2.4 The liability for loss of data shall be limited to the typical cost and effort of retrieving the data which would have occurred, if the data had been stored properly and in a risk-adequate manner.
- 12.2.5 This limitation of liability for Steinberg shall also apply for the benefit of Steinberg's employees in the event that any claims are filed directly against them.
- 12.3 Limitation of Liability outside the EU: In the event that you as a first buyer of the software are located outside the EU, the following limitation of liability shall apply.
- 12.3.1 Except for the aforementioned rights Steinberg or Steinberg's authorized distributors assume no liability for loss, damages, claims or costs of any type, direct or indirect damages including consequential damages arising from business interruptions, injuries to persons, or lack of due care or claims of third parties, even if a representative of Steinberg was informed about the possibility of such losses, damages, costs or claims. This limitation shall apply also in the event of a fundamental breach of this Agreement.
- 12.3.2 The total liability of Steinberg and its distributors in the context of this Agreement shall be limited to the amount which was paid for the software, if any.
- 12.3.3 The aforementioned restrictions shall not apply in countries where a limitation of liability is inadmissible.
- 14.4 This Agreement shall be governed and construed by the laws of the Federal Republic of Germany and the UN Convention on the International Sale of Goods (CISG) shall not apply.
- 14.5 The exclusive place of jurisdiction with respect to all disputes based on or in connection with this Agreement shall be Hamburg. Steinberg can bring an action against you at your general place of jurisdiction.

13 Infringement

You should inform Steinberg promptly in writing if a third party raises any claim against your use of the software. Steinberg may defend you, if you reasonably support Steinberg.

14 Final Provisions

- 14.1 This Agreement constitutes the entire understanding of the subject matter between the parties. Subsidiary agreements have not been concluded.
- 14.2 Supplements and amendments of this Agreement must be made in writing; a waiver of the requirement of the written form must also be made in writing.
- 14.3 If any stipulation of this Agreement should be or become invalid, in whole or in part, this shall not affect the validity of the remaining stipulations. The invalid stipulation shall be deemed to be replaced by the parties with a valid regulation which comes as close as possible to the commercially desired purpose originally intended for the ineffective provision; the same shall apply in the case of a lacuna.

Appendix

General Specifications

Jacks	MIC/LINE/Hi-Z Jack	x1	Combo jack (XLR, 1/4" TS or 1/4" TRS)
	MIC/LINE Jack	x1	Combo jack (XLR, 1/4" TS or 1/4" TRS)
	LINE OUT Jacks (L, R)	x2	Phone jacks (1/4" TS or 1/4" TRS)
	PHONES Jack	x1	Phone jack
	FOOT SW Jack	x1	Phone jack
	USB Connector	x1	USB 1.1, 44.1/48 kHz, 24 bit
Controls	HI-Z INPUT 1 Button	x1	ON: for guitars, etc OFF: for microphone or synthesizer, etc
	MONO Button	x1	ON: Input 1, 2 signals function as independent mono channels. OFF: Input 1, 2 signals function as a stereo pair.
	INPUT 1/2 GAIN Controls	x2	GAIN for input 1/2
	PHANTOM INPUT 1&2 Button	x1	Turns on/off the phantom power for INPUT 1&2. (+48V, XLR-type only).
	MASTER Control	x1	Adjusts the signal level sent to the LINE OUT jacks.
	PHONES Control	x1	Adjusts the signal level sent to the PHONES jack.
	MIX Control (INPUT—DAW)	x1	Adjusts the signal level between the INPUT and DAW.
	LOCK Button	x1	Locks the parameter to be edited via the AI KNOB.
	AI KNOB	x1	Turning: Controls the parameter on Cubase. Pressing: Opens certain windows in Cubase.
	Action Pad Button	x1	Uses the Interactive Recording function on Cubase.
Power Supply		USB bus-powered	
Dimensions (W x H x D)		W190 x H45.4 x D134.5 mm	
Net Weight		720 g	
Included Accessories		<ul style="list-style-type: none"> ▪ Cubase AI DVD-ROM ▪ TOOLS for CI2 CD-ROM ▪ USB cable ▪ Operation Manual 	

Specifications and descriptions in this manual are for information purposes only. Steinberg/Yamaha Corp. reserves the right to change or modify products or specifications at any time without prior notice. Since specifications, equipment or options may not be the same in every locale, please check with your Steinberg/Yamaha dealer.

Information for Users on Collection and Disposal of Old Equipment



This symbol on the products, packaging, and/or accompanying documents means that used electrical and electronic products should not be mixed with general household waste.

For proper treatment, recovery and recycling of old products, please take them to applicable collection points, in accordance with your national legislation and the Directives 2002/96/EC.

By disposing of these products correctly, you will help to save valuable resources and prevent any potential negative effects on human health and the environment which could otherwise arise from inappropriate waste handling.

For more information about collection and recycling of old products, please contact your local municipality, your waste disposal service or the point of sale where you purchased the items.

[For business users in the European Union]

If you wish to discard electrical and electronic equipment, please contact your dealer or supplier for further information.

[Information on Disposal in other Countries outside the European Union]

This symbol is only valid in the European Union. If you wish to discard these items, please contact your local authorities or dealer and ask for the correct method of disposal.

Verbraucherinformation zur Sammlung und Entsorgung alter Elektrogeräte



Befindet sich dieses Symbol auf den Produkten, der Verpackung und/oder beiliegenden Unterlagen, so sollten benutzte elektrische Geräte nicht mit dem normalen Haushaltsabfall entsorgt werden.

In Übereinstimmung mit Ihren nationalen Bestimmungen und den Richtlinien 2002/96/EC, bringen Sie alte Geräte bitte zur fachgerechten Entsorgung, Wiederaufbereitung und Wiederverwendung zu den entsprechenden Sammelstellen.

Durch die fachgerechte Entsorgung der Elektrogeräte helfen Sie, wertvolle Ressourcen zu schützen und verhindern mögliche negative Auswirkungen auf die menschliche Gesundheit und die Umwelt, die andernfalls durch unsachgerechte Müllentsorgung auftreten könnten.

Für weitere Informationen zum Sammeln und Wiederaufbereiten alter Elektrogeräte, kontaktieren Sie bitte Ihre örtliche Stadt- oder Gemeindeverwaltung, Ihren Abfallentsorgungsdienst oder die Verkaufsstelle der Artikel.

[Information für geschäftliche Anwender in der Europäischen Union]

Wenn Sie Elektrogeräte ausrangieren möchten, kontaktieren Sie bitte Ihren Händler oder Zulieferer für weitere Informationen.

[Entsorgungsinformation für Länder außerhalb der Europäischen Union]

Dieses Symbol gilt nur innerhalb der Europäischen Union. Wenn Sie solche Artikel ausrangieren möchten, kontaktieren Sie bitte Ihre örtlichen Behörden oder Ihren Händler und fragen Sie nach der sachgerechten Entsorgungsmethode.

Information concernant la Collecte et le Traitement des déchets d'équipements électriques et électroniques.



Le symbole sur les produits, l'emballage et/ou les documents joints signifie que les produits électriques ou électroniques usagés ne doivent pas être mélangés avec les déchets domestiques habituels.

Pour un traitement, une récupération et un recyclage appropriés des déchets d'équipements électriques et électroniques, veuillez les déposer aux points de collecte prévus à cet effet, conformément à la réglementation nationale et aux Directives 2002/96/EC.

En vous débarrassant correctement des déchets d'équipements électriques et électroniques, vous contribuerez à la sauvegarde de précieuses ressources et à la prévention de potentiels effets négatifs sur la santé humaine qui pourraient advenir lors d'un traitement inapproprié des déchets.

Pour plus d'informations à propos de la collecte et du recyclage des déchets d'équipements électriques et électroniques, veuillez contacter votre municipalité, votre service de traitement des déchets ou le point de vente où vous avez acheté les produits.

[Pour les professionnels dans l'Union Européenne]

Si vous souhaitez vous débarrasser des déchets d'équipements électriques et électroniques veuillez contacter votre vendeur ou fournisseur pour plus d'informations.

[Information sur le traitement dans d'autres pays en dehors de l'Union Européenne]

Ce symbole est seulement valable dans l'Union Européenne. Si vous souhaitez vous débarrasser de déchets d'équipements électriques et électroniques, veuillez contacter les autorités locales ou votre fournisseur et demander la méthode de traitement appropriée.

Información para Usuarios sobre Recolección y Disposición de Equipamiento Viejo



Este símbolo en los productos, embalaje, y/o documentación que se acompaña significa que los productos electrónicos y eléctricos usados no deben ser mezclados con desechos hogareños corrientes.

Para el tratamiento, recuperación y reciclado apropiado de los productos viejos, por favor llévelos a puntos de recolección aplicables, de acuerdo a su legislación nacional y las directivas 2002/96/EC.

Al disponer de estos productos correctamente, ayudará a ahorrar recursos valiosos y a prevenir cualquier potencial efecto negativo sobre la salud humana y el medio ambiente, el cual podría surgir de un inapropiado manejo de los desechos.

Para mayor información sobre recolección y reciclado de productos viejos, por favor contacte a su municipio local, su servicio de gestión de residuos o el punto de venta en el cual usted adquirió los artículos.

[Para usuarios de negocios en la Unión Europea]

Si usted desea deshacerse de equipamiento eléctrico y electrónico, por favor contacte a su vendedor o proveedor para mayor información.

[Información sobre la Disposición en otros países fuera de la Unión Europea]

Este símbolo sólo es válidos en la Unión Europea. Si desea deshacerse de estos artículos, por favor contacte a sus autoridades locales y pregunte por el método correcto de disposición.

► **Warranty Terms and Conditions**

available as printed PDF file at

www.steinberg.net/warranty

The Warranty Terms and Conditions available as printed PDF file at www.steinberg.net/warranty apply only for countries of the European Economic Area (EEA) and Switzerland.

► **Gewährleistungsbestimmungen**

finden Sie als druckbare PDF Datei unter

www.steinberg.de/warranty

Die Gewährleistungsbestimmungen in Schriftform sind als PDF-Datei unter www.steinberg.de/warranty erhältlich und gelten nur für den Europäischen Wirtschaftsraum (EWR) und die Schweiz.

► **Les conditions de garantie**

se trouvent dans le document PDF

imprimable sous

www.steinberg.net/warranty

Les conditions de garantie disponibles au format PDF à la page www.steinberg.net/warranty s'appliquent uniquement aux pays de l'Espace économique européen (EEE) et à la Suisse.

► **Las condiciones de garantía**

se encuentran en el documento PDF en

www.steinberg.net/warranty

Los términos y condiciones de la garantía como archivo PDF para su impresión en www.steinberg.net/warranty sólo están disponible en países del Espacio Económico Europeo (EEE) y Suiza.

► **Termini e Condizioni di Garanzia**

disponibili su file PDF stampabile

all'indirizzo web

www.steinberg.net/warranty

I termini e le condizioni della garanzia, disponibili in formato PDF all'indirizzo www.steinberg.net/warranty, sono validi soltanto per i paesi dell'Area Economica Europea (EEA) e per la Svizzera.

For details of products, please contact your nearest Steinberg representative or the authorized distributor listed below.

Pour plus de détails sur les produits, veuillez-vous adresser à Steinberg ou au distributeur le plus proche de vous figurant dans la liste suivante.

Die Einzelheiten zu Produkten sind bei Ihrer unten aufgeführten Niederlassung und bei Steinberg Vertragshändlern in den jeweiligen Bestimmungsländern erhältlich.

Para detalles sobre productos, contacte su tienda Steinberg más cercana o el distribuidor autorizado que se lista debajo.

NORTH AMERICA

CANADA

Yamaha Canada Music Ltd.

135 Milner Avenue, Scarborough, Ontario, M1S 3R1, Canada
Tel: 416-298-1311

U.S.A.

Steinberg North America, c/o Yamaha Corporation of America

6600 Orangethorpe Ave., Buena Park, Calif. 90620, U.S.A.
Tel: 714-522-9011

CENTRAL & SOUTH AMERICA

MEXICO

Yamaha de México S.A. de C.V.

Calz. Javier Rojo Gómez #1149, Col. Guadalupe del Moral
C.P. 09300, México, D.F., México
Tel: 55-5804-0600

BRAZIL

Yamaha Musical do Brasil Ltda.

Rua Joaquim Floriano, 913 - 4º andar, Itaim Bibi, CEP
04534-013 Sao Paulo, SP. BRAZIL
Tel: 011-3704-1377

ARGENTINA

Yamaha Music Latin America, S.A. Sucursal de Argentina

Viamonte 1145 Piso2-B 1053, Buenos Aires, Argentina
Tel: 1-4371-7021

PANAMA AND OTHER LATIN AMERICAN

COUNTRIES/CARIBBEAN COUNTRIES

Yamaha Music Latin America, S.A.

Torre Banco General, Piso 7, Urbanización Marbella, Calle
47 y, Aquilino de la Guardia, Ciudad de Panamá, Panamá
Tel: +507-269-5311

EUROPE

Steinberg Media Technologies GmbH

Neuer Hoeltigbaum 22-32, 22143 Hamburg, Germany
Tel: +49-(0)40-210 35 0

AFRICA

Yamaha Corporation,

Asia-Pacific Music Marketing Group

Nakazawa-cho 10-1, Naka-ku, Hamamatsu, Japan 430-8650
Tel: +81-53-460-2312

MIDDLE EAST

Yamaha Music Gulf FZE

LOB 16-513, P.O.Box 17328, Jubel Ali,
Dubai, United Arab Emirates
Tel: +971-4-881-5868

ASIA

THE PEOPLE'S REPUBLIC OF CHINA

Yamaha Music & Electronics (China) Co.,Ltd.

2F, Yunhedasha, 1818 Xinzha-lu, Jingan-qu, Shanghai, China
Tel: 021-6247-2211

INDONESIA

PT. Yamaha Music Indonesia (Distributor) PT. Nusantik

Gedung Yamaha Music Center, Jalan Jend. Gatot Subroto
Kav. 4, Jakarta 12930, Indonesia
Tel: 21-520-2577

JAPAN

Yamaha Corporation, Steinberg Information Center

Nakazawa-cho 10-1, Naka-ku, Hamamatsu, Japan 430-8650
Tel: +81-53-460-5270

KOREA

Yamaha Music Korea Ltd.

8F, 9F, Dongsung Bldg. 158-9 Samsung-Dong,
Kangnam-Gu, Seoul, Korea
Tel: 080-004-0022

MALAYSIA

Yamaha Music Malaysia, Sdn., Bhd.

Lot 8, Jalan Perbandaran, 47301 Kelana Jaya, Petaling Jaya,
Selangor, Malaysia
Tel: 3-78030900

SINGAPORE

Yamaha Music Asia Pte., Ltd.

#03-11 A-Z Building 140 Paya Lebor Road, Singapore
409015
Tel: 747-4374

TAIWAN

Yamaha KHS Music Co., Ltd.

3F, #6, Sec.2, Nan Jing E. Rd. Taipei. Taiwan 104, R.O.C.
Tel: 02-2511-8688

THAILAND

Siam Music Yamaha Co., Ltd.

4, 6, 15 and 16th floor, Siam Motors Building, 891/1 Rama 1
Road, Wangmai, Pathumwan, Bangkok 10330, Thailand
Tel: 02-215-2626

OTHER ASIAN COUNTRIES

Yamaha Corporation,

Asia-Pacific Music Marketing Group

Nakazawa-cho 10-1, Naka-ku, Hamamatsu, Japan 430-8650
Tel: +81-53-460-2317

OCEANIA

AUSTRALIA

Yamaha Music Australia Pty. Ltd.

Level 1, 99 Queensbridge Street, Southbank, Victoria 3006,
Australia
Tel: 3-9693-5111

NEW ZEALAND

Music Works LTD

P.O.BOX 6246 Wellesley, Auckland 4680, New Zealand
Tel: 9-634-0099

COUNTRIES AND TRUST TERRITORIES IN PACIFIC OCEAN

Yamaha Corporation,

Asia-Pacific Music Marketing Group

Nakazawa-cho 10-1, Naka-ku, Hamamatsu, Japan 430-8650
Tel: +81-53-460-2312

HEAD OFFICE

Steinberg Media Technologies GmbH

Neuer Hoeltigbaum 22-32, 22143 Hamburg, Germany
Tel: +49-(0)40-210 35 0

Steinberg Web Site
<http://www.steinberg.net>

U.R.G., Pro Audio & Digital Musical Instrument Division, Yamaha Corporation
© 2009 Yamaha Corporation
WR63590 907MWAP?.?-01A0
Printed in China