



FX MIDI CONTROLLER  
**VFX-1**

**OWNER'S MANUAL**



〒154-0023  
東京都世田谷区若林1-18-6  
Web: [www.vestax.jp](http://www.vestax.jp) E-Mail: [cs@vestax.jp](mailto:cs@vestax.jp)

**Head Office**  
1-18-6 Wakabayashi, Setagaya-ku, Tokyo 154-0023 Japan  
Web: <http://www.vestax.com/>

**Vestax Global Support**  
[csg@vestax.jp](mailto:csg@vestax.jp)

**Vestax Europe Support**  
[cse@vestax.jp](mailto:cse@vestax.jp)

# CONTENTS

1) INTRODUCTION	-----	16
2) SAFETY INFORMATION	-----	16
3) UNPACKING	-----	17
4) GETTING STARTED	-----	18
5) HARDWARE OVERVIEW	-----	21
6) SOFTWARE OVERVIEW	-----	22
7) USING EFFECTS	-----	22
8) TIME AND TEMPO	-----	24
9) EFFECTS TYPES	-----	25
10) CHAINING EFFECTS	-----	26
11) TROUBLESHOOTING	-----	26
12) SUPPORT	-----	27

# INTRODUCTION

The Vestax VFX-1 is an add on effects controller made for use along side the Vestax VCI-300 and Serato ITCH.

Features:

- 2 effects processors
- 12 assignable effects types.
- 3 adjustable knobs for control of 4 parameters per effect
- Assignable source buttons
- Quick tempo matching and manual tempo buttons

# IMPORTANT SAFETY INFORMATION

1. Read these instructions.
2. Keep these instructions.
3. Heed all warnings.
4. Follow all instructions.
5. Do not use this apparatus near water.
6. Clean only with a dry cloth.
7. Do not block any ventilation openings. Install in accordance with manufacturer' s instructions.
8. Do not install near any heat sources such as radiators, registers, stoves, or other apparatus (including amplifiers) that produce heat.
9. Only use attachments and accessories specified by the manufacturer.
10. Use only with the cart, stand, tripod, bracket, or table specified by the manufacturer, or sold with the apparatus. When a cart is used, use caution when moving the cart/apparatus combination to avoid injury from tip-over.
11. Unplug this apparatus during lightning storms or when unused for long periods of time.
12. Refer all servicing to qualified service personnel. Servicing is required when the apparatus has been damaged in any way, such as liquid has been spilled or objects have fallen into the apparatus, the apparatus has been exposed to rain or moisture, does not operate normally, or has been dropped.
13. If rack-mounting, provide adequate ventilation. Equipment may be located above or below this apparatus, but some equipment (like large power amplifiers) may cause an unacceptable amount of hum or may generate too much heat and degrade the performance of this apparatus.

**WARNING:** To reduce the risk of fire or electric shock, do not expose this apparatus to rain or moisture. Apparatus shall not be exposed to dripping or splashing and no objects filled with liquids, such as vases, shall be placed on the apparatus

## UNPACKING

### Your package should include:

This Printed Manual  
Vestax VFX-1 Controller  
USB Cable  
CD-ROM

### Minimum System Requirements

Hardware :  
ITCH DJ controller, VCI-300 or other compatible unit.

Computer :

Mac

- \* Intel processor, 1.6 GHz or better
- \* 1 GB RAM
- \* 1024 x 768 screen resolution
- \* OSX 10.4.11 or higher
- \* 2 Available USB Port
- \* Hard disk space for music

Windows XP

- \* Intel processor, Pentium 4 mobile 2GHz or better
- \* 1 GB RAM
- \* 1024 x 768 screen resolution
- \* Service Pack 2 or higher
- \* 2 Available USB Port
- \* Hard disk space for music

Windows Vista 32bit & 64bit

- \* Intel processor, Core Duo 1.6 GHz or better
- \* 1 GB RAM
- \* 1024 x 768 screen resolution
- \* Service Pack 1 or higher
- \* 2 Available USB Port
- \* Hard disk space for music

Make sure you are running the latest version of ITCH, available here:  
[www.serato.com/downloads/itch](http://www.serato.com/downloads/itch)

## GETTING STARTED

To use the Vestax VFX-1 ITCH effects controller you will need to have the following:

ITCH version 1.3 or later. (check here for the latest version: <http://serato.com/downloads/itch>)  
An ITCH compatible controller.  
A computer with 2 USB ports or more that meets the minimum system requirements.

### SOFTWARE INSTALLATION

Free updates to the ITCH software are available from <http://www.serato.com/itch>  
We suggest you check the website for the latest version before installing.

**SOFTWARE INSTALLATION**

Free updates to the ITCH software are available from <http://www.serato.com/itch>

We suggest you check the website for the latest version before installing.

**INSTALLATION MAC**

- **Either**
  - Insert the Serato ITCH install CD into your computers CD drive and browse to it using Finder.
- **Or**
  - Browse using Finder to the location where the ITCH download installer was saved, double click the ITCH .dmg file to mount the image on your system, and browse to that volume.
- **Then:**
  - Double click the file called "ITCH installer.mpkg".

1. The following screen will appear. Click Continue.



2. Accept the License Agreement and then click Continue.



3. Choose the hard disk you want to install to and click Continue.



4. Confirm the install location and click Install.



5. ITCH will now be installed.



6. A confirmation screen will appear when the install is complete.



**INSTALLATION PC**

The installer should start automatically, if not;

- **Either**
  - Insert the Serato ITCH install CD into your computer's CD drive and browse to it using Windows Explorer.
- **Or**
  - Browse using Windows Explorer to the location where the ITCH download installer was saved, unpack the ITCH .zip file and browse to the extracted contents.
- **Then:**
  - Double click the file called "ITCH\_installer.exe".

1. The following screen will appear. Click Next.



2. Accept the License Agreement and then click Next.



3. Choose the location you want to install to and click Next.



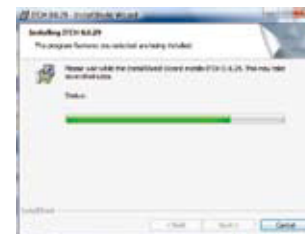
4. Complete will perform a standard installation. Click Next to continue.



5. Confirm the installation options and click Install.



6. ITCH will now be installed.



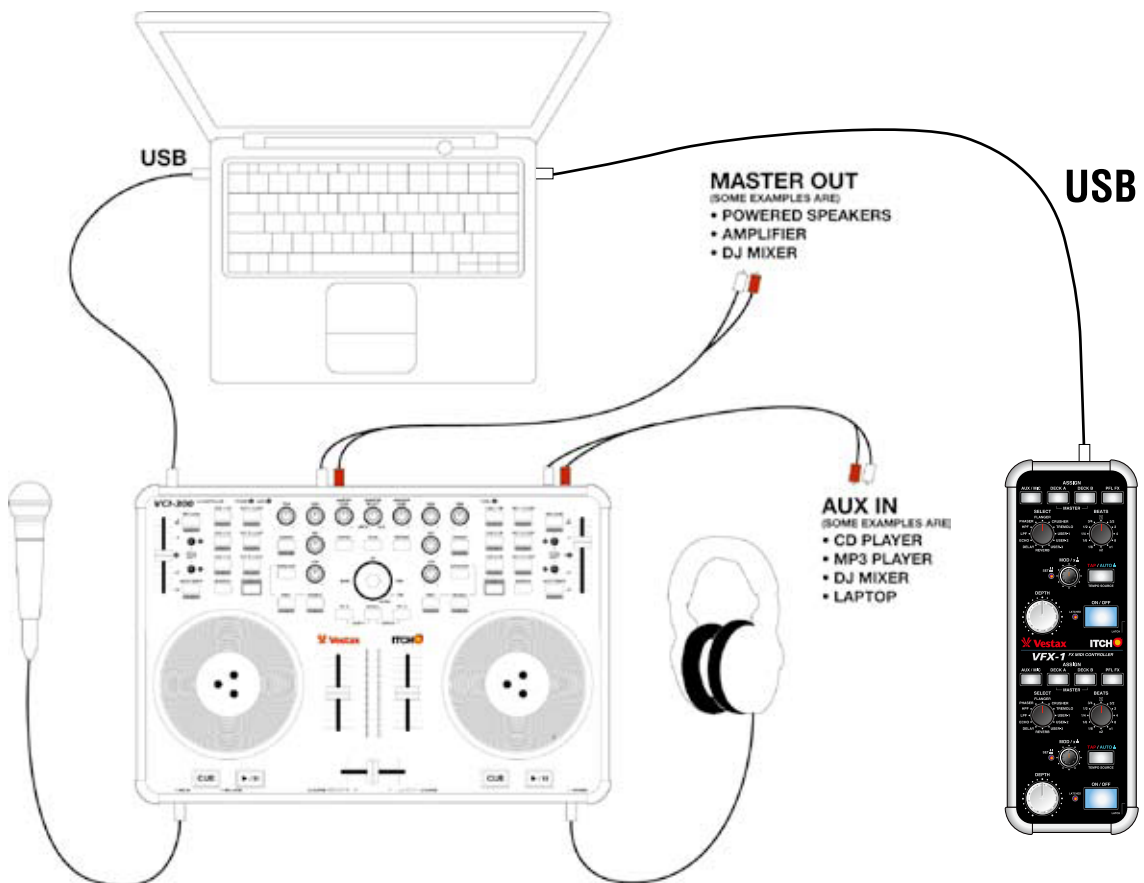
7. An confirmation screen will appear when the install is complete.



First connect the ITCH controller to a USB port on your computer, then connect the VFX-1 controller and launch ITCH.

**NOTE:** ITCH will not display the effects panel until the VFX-1 is connected.

## CONNECTIONS



# HARDWARE OVERVIEW



NO.	Control	Function
1	AUX/MIC	Selects AUX and MIC bus as the effect insert point
2	DECK A	Selects DECK A as the effect insert point
3	DECK B	Selects DECK B as the effect insert point
4	MASTER	Selects the Master signal as the effect insert point
5	PFL FX	Sends the effected signal to the PFL bus, even if the effect is switched off
6	SELECT	Rotate to select a different effect
7	BEATS	Rotate to select a beat division
8	DEPTH	Controls the primary FX parameter
9	MOD/x	Controls the second FX parameter
10	TAP/AUTO	Tapping goes into Tap Tempo Mode: pressing and holding goes back into Auto-BPM Mode
11	ON/OFF	Turns the effect on and off
12	LATCH	Changes the ON/OFF button from Momentary to Latch mode

# SOFTWARE OVERVIEW

When you plug in your Vestax VFX-1 into your computer the effects panel will appear above the virtual decks.

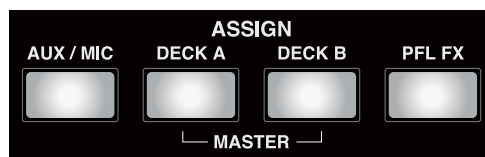


# USING THE EFFECTS

## ASSIGNING A SOURCE

Serato ITCH has two effects processors. Connect the Vestax VFX-1 to control these effects processors.

To assign a source to either of the effect processors press the desired Effect Deck Select button on the VFX-1 (AUX/MIC, DECK-A, DECK-B, PFL-FX).



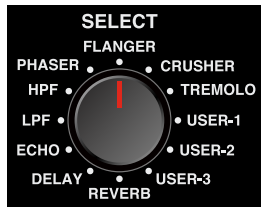
To assign an effect to the master output, press the DECK-A and DECK-B buttons together.

**Note:** The effect will not be activated until you press the on/off button.



## SELECTING AN EFFECT

Use the SELECT knob to dial through the effects types until you reach the desired effect.



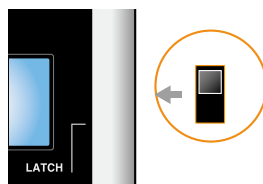
## TURNING AN EFFECT ON OR OFF



To engage the selected effect, press the ON/OFF button.

### ON/OFF MODES:

By switching the SLIDE SWITCH on the side of the VFX-1 you can choose the desired latch mode for the ON/OFF button.

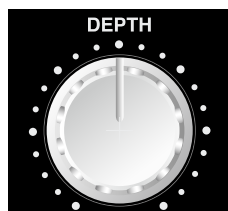


**LATCH:** Move the SLIDE SWITCH up to select Latch (Normal) mode. The ON/OFF button will turn the effect on when pressed, and then off when pressed again.

**MOMENTARY:** Move the SLIDE SWITCH down to select Momentary mode. This turns the ON/OFF button into a momentary button, meaning the effect is on for only as long as you press and hold the ON/OFF button down. Releasing the ON/OFF button turns the effect off.

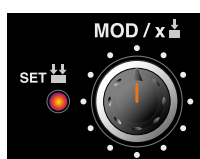
### P1: EFFECTS DEPTH

The EFFECTS DEPTH knob alters the amount effect applied to the signal.



### P2: EFFECT MOD/x

The EFFECT MOD/x knob controls the intensity of the feedback or modulation of the effect.



**P3: EFFECT MOD/x + PUSH**

P3 is an additional effect parameter control for advanced users.

Pushing the EFFECT MOD/x knob will alter the P3 value, allowing you to alter the second parameter value for the selected effect, if available.



**NOTE:** To reset these values to the stored or 'normal' settings, change the effect type then switch back to your current effect.

**CUING UP EFFECTS**

Pressing the FX CUE button will send the effected signal to your ITCH controller's PFL to audition on your headphones. This is useful to audition the effect before bringing it into the mix when the effect is switched off.



**TIME & TEMPO**

ITCH effects are synchronized to the track's BPM, when a BPM is available. The effect parameters will modulate or repeat at the cycle division you set with the BEATS knob. Each of the 12 settings represent a division of a single beat. A value of '1' means a 1 beat cycle. A value of '4' indicates 4 beats or one whole bar (there are 4 'beats' to a bar), while '1/4' indicates a quarter of a beat (a musical 16th note).

BEATS will alter a different effect parameter for each effect.

The value of the X2 and X1 divisions will differ depending on the selected effect. For example, when using delay, the X2 and X1 will represent 1/16 and 1/32 beat values (stepping anti-clockwise). When using flanger, X2 and X1 will represent 16 and 32 beat values (stepping clockwise).

**AUTO-TEMPO**

Auto-tempo is on by default and will follow the currently selected track's BPM value. If neither track has a BPM value then the effect goes into manual mode using the currently stored manual tempo (BPM value). Holding TAP down causes the DECK A and DECK B buttons to flash. You can then choose the auto tempo source and override the current track selection.

TIP: Analyze your files with the 'set auto bpm' field checked to calculate the track's BPM value.



## TAP TEMPO

To override the auto-tempo value, or if no BPM value is set for the selected track, you can tap the TAP/AUTO button to enter a manual value. This value will take effect after ? taps on the button. To return to Auto mode press the TAP/AUTO button until auto-tempo mode is restored.

**NOTE:** The default manual BPM on program start is 120.

# EFFECTS TYPES

## REVERB

Reverb is a series of small natural delays or reverberations of the audio signal, creating a spacious atmospheric trail such as you would hear in a cave or in an enclosed space. These reverb 'reflections' are audio ripples that sound like the music is bouncing around from wall to wall. As a digital effect, reverb can allow you to create a sense of space and atmosphere. The TIME knob adjusts how long the reverb trail is held before dissipating. As the reverb depth becomes fully wet, the original sound gradually disappears. Feedback alters the color or character of the effect, from deeper or muddy to bright and shimmering.

## DELAY

A delay is when a part of the audio signal is repeated at a later stage. Often called an echo, the delayed signal will repeat the audio signal for a set amount of times ( 'feedback' ) and the level will increase as the effect wetness is increased, until only the full wet delay is playing with no original signal.

The delayed signal will continue even if the WET/DRY dial is turned back to fully DRY, and continue until the decayed audio trail has finished. To stop the delay before the effect decays to nothing turn off the effect, or reduce the feedback amount.

## ECHO

Similar to the Delay, the Echo effect will repeat the original signal at a later stage for a set number of times before the echo trail dissipates. Echo however emulates classic Tape Echo effect units, with a warmer, more analog sound, with the user able to control the warmth/colour of the effected signal, rather than a clean digital delay.

## LPF (Low Pass Filter)

The Low Pass Filter acts like an equalizer that cuts the top end out of the frequency spectrum, allowing only the audio below the cut off point to pass through, sweeping down towards the low end of the signal. The Feedback adds resonance, making the effect cutoff point more pronounced.

## HPF (High Pass Filter)

The High Pass Filter acts like an equalizer that cuts the bass out of the frequency spectrum, allowing only the audio above the cut off point to pass through, sweeping up towards the top end of the signal. The Feedback adds resonance, making the effect cutoff point more pronounced.

**NOTE:** These two filter effects are easily synced to the tempo multiplier to sweep in time with the beat by adjusting the LFO depth parameter.

## PHASER

The phaser uses filters to shift the frequency spectrum to create a sweeping effect on the audio source. The main parameter is the low frequency oscillator to alter the speed of the sweep and the feedback to adjust the intensity of the effect.

## FLANGER

The flanger effect is when two identical sound sources are mixed together at slightly different times, creating a more natural sounding audio sweep up and down the frequency spectrum as you change the time parameter. As you feedback more of the original source into the effect, the flanger will become more intense.

## BITCRUSHER

Bitcrusher adds distortion and lowers the bit rate resolution of the audio source. This effect can either sound glitchy or overdriven depending on what point your feedback or bit depth is set to.

### TREMOLO

The Tremolo modulates the signal volume, lowering and increasing it rhythmically to the set time divisions - as if you were performing a series of cuts on the mixer's cross fader. The TIME knob determines the rate of the volume drop, while the FEEDBACK knob modifies the modulation on the signal volume. The depth of the cut is determined by the WET/DRY amount, with 100% being a cut to silence.

### USER-1, USER-2, USER-3

The user effect slots are there for you to assign your favorite and additional effects to. To assign an effect to a user slot, first select one of the user slots with the VFX-1. Then, use your mouse to cycle through effect options using the arrows on either side of the effect parameter name.

### SAVING EFFECT SETTINGS

Each effect has 3 parameter values, which can be adjusted and saved as the effect's default upon recall. Adjust the parameter values how you wish, then to save and store these settings as the default press the MOD/X knob twice in quick succession. All 3 selected parameter values will be stored.

If you make further adjustments to this preset, only switching to another effect and back will restore your stored preset setting.

## CHAINING EFFECTS

When you assign the same source to effects units 1 and 2, the effects will chain in series. This effects chain will feed the output of effects unit 1 into effects unit 2, allowing you to create more complicated effects.

## TROUBLESHOOTING

Q: I can't see the effects panel when the VFX-1 is connected.

A: Make sure both your primary ITCH controller and the VFX-1 is attached, ITCH is open, and you are seeing both virtual decks in ITCH.

A: Make sure you are using the latest version of ITCH. Download: <http://serato.com/downloads/itch>

A: Check to see if your VFX-1 is powering on (lights will be illuminated). If not, swap USB ports.

Q: I only have 2 USB ports on my laptop, but I have my ITCH controller, the VFX-1 and an external hard drive. What do I do?

A: You can use a USB hub to increase the number of available USB ports. Make sure you only run your ITCH controller directly from your laptop's 'good' USB port, and that you use a powered hub (not just using USB power) for the other devices. It is advisable to plug in your ITCH controller first before connecting the USB hub.

Q: When I turn the knobs on the VFX-1 fast, there are audio glitches or dropouts.

A: You may need to increase your USB latency buffer size in the Setup window of ITCH.

Q: ITCH was performing fine with my laptop until I started using the VFX-1 and now I am getting audio dropouts and the CPU meter level has increased. Why?

A: The effects use more CPU than before, your laptop may not perform as well using the same USB latency buffer. Increase the buffer in your Setup screen until you don't have any more dropouts.

## OPTIMIZATION

To optimize your system for use with ITCH and the VFX-1 make sure you do the following:

- Switch off Bluetooth.
- Switch off wireless network devices and unplug any wired network connections.
- Switch off screen saver and set sleep mode to 'never'.
- Make sure your hard drives don't have a sleep mode enabled.
- Close down any other software, including antivirus software or the like.
- If the unit isn't powering sufficiently, check that you are using a "good" USB port. (If you are using a Macbook Pro, this can be the left port or for 2009 models and Macbooks this will be the port furthest away from the screen. Otherwise try all ports until you find one which works best).
- Ensure USB drivers are up to date for your machine. These can usually be found on your laptop manufacturer's website.
- Ensure you have ample room left on your hard drive (this is approximately a minimum of 10% of your hard drive capacity - both internal and external).
- Calibrate your USB buffer setting. Start with the USB buffer slider at the hard right position and slowly move it as far to the left as you can, clicking the apply button with each increment, until you notice any audio interruptions or loss of performance. Ideally you will want the lowest buffer setting possible.

## SUPPORT

### Software Updates and Online Support

For ITCH software updates and online support visit the ITCH website:  
<http://www.serato.com/itch>

To help us with your support enquiry please have the following information available.

ITCH software version  
Operating System  
Computer model and specifications

### Official Support Chanel

For Vestax VCI-300 hardware support and customer service, including warranty cover, contact your local Vestax distributor:

Or visit the website [http://ci.vestax.com/en/support/support\\_01.html](http://ci.vestax.com/en/support/support_01.html)

