



*USB MIDI CONTROLLER*

**VCI-100**

**OWNER'S MANUAL**

**Vestax Corporation**

1-18-6 Wakabayashi, Setagaya-ku, Tokyo 154-0023 Japan  
Phone +81(0)3-3412-7011 Fax +81(0)3-3412-7013  
Web : [www.vestax.com](http://www.vestax.com)

**Vestax Europe Technical Support**

Rheinstr.213 D-53332 Bornheim Germany  
Phone 49(0)2222-95-23-72 Fax 49(0)2222-95-23-74

---

# CONGRATULATIONS !

Thank you for purchasing the Vestax VCI-100. Please read through the users manual thoroughly to use the VCI-100 safely and at its best performance.

## CONTENTS

Precautions for use .....	15
Safety Concerns .....	16
Features .....	17
1.Minimum system requirement .....	18
2.Install and Operations .....	19
3.Part names & Functions .....	22
4.Trouble shooting .....	25
5.MIDI Map .....	26
6.Specification .....	27



### CAUTION

RISK OF ELECTRIC SHOCK DO NOT OPEN



**CAUTION : TO REDUCE THE RISK OF ELECTRIC SHOCK  
DO NOT REMOVE COVER (OR BACK)  
NO USER-SERVICEABLE PARTS INSIDE  
REFER SERVICING TO QUALIFIED SERVICE PERSONNEL**



The lightning flash with arrowhead symbol, within an equilateral triangle, is intended to alert the user to the presence of uninsulated "dangerous voltage" within the product's enclosure that may be of sufficient magnitude to constitute a risk of electric shock to persons.



The exclamation point within an equilateral triangle is intended to alert the user to the presence of important operating and maintenance (servicing) instructions in the literature accompanying the appliance.

TO REDUCE THE RISK OF FIRE OR ELECTRIC SHOCK, DO NOT EXPOSE THIS APPLIANCE TO RAIN OR MOISTURE.

# IMPORTANT SAFEGUARDS

## READ BEFORE OPERATING EQUIPMENT

This product was designed and manufactured to meet strict quality and safety standards. There are, however, some installation and operation precautions which you should be particularly aware of.

1. Read instructions-All the safety and operating instructions should be read before the appliance is operated.
2. Retain instructions-The safety and operating instructions should be retained for future reference.
3. Heed Warnings-All warnings on the appliance and in the operating instructions should be adhered to.
4. Follow Instructions-All operating and use instructions should be followed.
5. Cleaning-Do not use liquid cleaners or aerosol cleaners. Use a damp cloth for cleaning.
6. Attachments-Do not use attachments not recommended by the product manufacturer as they may cause hazards.
7. Water and Moisture-Do not use this product near water-for example, near a bath tub, wash bowl, kitchen sink, or laundry tub, in a wet basement, or near a swimming pool, and the like.
8. Accessories-Do not place this product on an unstable cart, stand, tripod, or table. The product may fall, causing serious injury to a child or adult, and serious damage to the appliance. Use only with a cart, stand, tripod, bracket, or table recommended by the manufacturer, or sold with product. Any mounting of the appliance should follow the manufacturer's instructions, and should use a mounting accessory recommended by the manufacturer.
9. This product should never be placed near or over a radiator or heat register. This product should not be placed in a built-in installation such as a bookcase or rack unless proper ventilation is provided or the manufacturer's instructions have been adhered to.
10. Power sources-This product should be operated only from the type of power source indicated on the marking label. If you are not sure of the type of power supply to your home, consult your appliance dealer or local power company.
11. Lightning-For added protection of this product during a lightning storm, or when it is left unattended and unused for long periods of time, unplug it from the wall outlet. This will prevent damage to the product due to lightning and power-line surges.
12. Overloading-Do not overload wall outlets and extension cords as this can result in a risk of fire or electric shock.
13. Object and Liquid Entry-Never push objects of any kind into this product through openings as they may touch dangerous voltage points or short-out parts that could result in a fire or electric shock. Never spill liquid of any kind on the product.
14. Servicing-Do not attempt to service product yourself as opening or removing covers may expose you to dangerous voltage or other hazards. Refer all servicing to qualified personnel.

## Features

---

The VCI-100 is a highly PROFESSIONAL product, with sensor JOG wheel and control technology from our turntables. Also featured is a variable curve generator that controls the crossfader curve from the hardware with original faders. The VCI-100 is built with high quality mechanical parts and a PCB designed for accurate and stable operations.

- 90 parameters of various software are assignable to the VCI-100's control section via USB MIDI IN/OUT.
- The JOG wheel is constructed with a high-resolution pulse sensor; touch sensor and acrylic platter mechanism. With this combination, operations such as pitch bending, scanning and scratching can be performed with speed and accuracy.
- The resistance value of the fader movement is AD converted and sent to the software along with curve information created by the CPU inside the VCI-100. Therefore, you can adjust the crossfader curve to your preference whether or not the software you use has curve control.
- The DATA SEND LED and JOG wheel SENSOR LED provides a clear visual of the current status to assist in an authentic play mode in real time.
- The power source is selectable from USB bus-power and the exclusive power adaptor. (For best performance and stable operation, please use the power adaptor if the computer's power capacity is low or if using a USB hub)
- There are no issues if you don't have any software to operate. TRAKTOR 3 LE (Native Instrument Inc.) is bundled to the VCI-100 with exclusive control assignment files.
- The VCI-100 is USB MIDI class compliant and provides simple plug & play features working with Apple and Windows computers.
- Compatible with all software that allows MIDI control assignment. Each software's samples of MIDI control assignment files will be available at [www.vestax.com](http://www.vestax.com).
- The metal body is almost the same size as a standard Laptop, thin but highly durable, compact and convenient for transportation.

# 1. Minimum system requirements

---

## a) Operating System

### ● Windows

Requires Windows XP Service Pack 2. Does not support Windows 2000/98/Me

NOTE: DO NOT connect to a Windows 2000 Professional PC. The display screen will turn blue and the computer may freeze.

### ● Macintosh

Supports Mac OS X 10.3.9 / 10.4.7. Does not support previous system versions.

Multi client environments that operate the VCI-100 with more than 1 software are not supported.

## b) Hardware

### ● Windows

CPU: Pentium III 500 MHz (Advanced CPU required for laptops)

Memory: 256MB RAM

USB 2.0 Interface

### ● Macintosh

CPU: Macintosh G3 600/G4 667MHz (Advanced CPU required for laptops)

Memory: 256MB RAM

USB 2.0 Interface

● These minimum system requirements are for the VCI-100 hardware. If the software's system requirements are higher than the VCI-100, please prepare a qualified advanced operating system.

● Macintosh CPU accelerator cards are not supported. The computer must have USB connection.

● The VCI-100 will not operate if the sound device is a YAMAHA AC-XG Audio Device.

※ Above are minimum requirements and does not guarantee performance for all computers and devices.

## 2. Install and Operation

The VCI-100 is USB MIDI class compliant and provides simple plug and play with Macintosh OS X and Windows XP. Drivers are not required.

### (1) Windows XP

1. Set the power select switch on the rear panel to AC ADAPTOR when using the exclusive AC adaptor. Set to USB BUSS POWER if using USB connection to provide power from your computer.

NOTE: Please use the exclusive power adaptor for stable operation if the USB is connected to a non-powered USB hub or if the computer does not have enough power capacity.

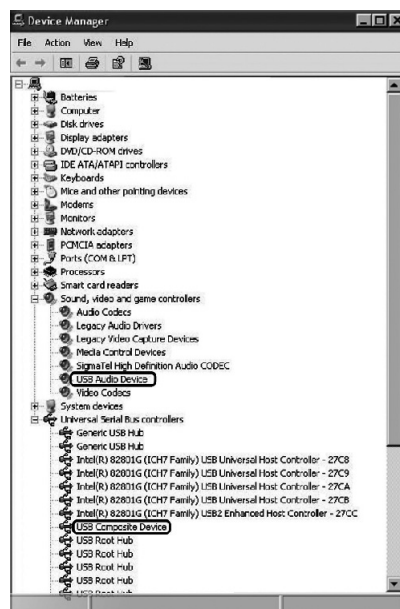
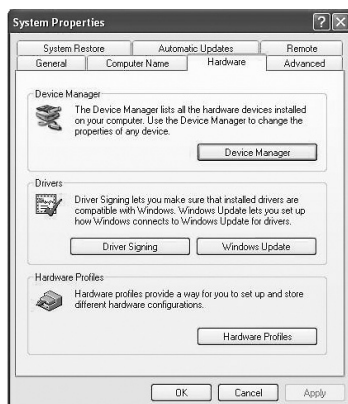
2. Connect the VCI-100 to the computer via USB.

The power LED, Jog wheel, control switch LED will light up.

A window will pop up and say a new device has been detected and drivers for Vestax PC-CONTROLLER, USB combined device and USB audio device will be installed automatically. (The message may not pop up if the driver is installed or if it's not the first time to be connected.)

3. The Data send LED will blink along with each movement of the VCI-100 to indicate the output of the control signals when the drivers have been installed perfectly.

4. To check connection status in Windows XP, view [control panel] > [system] > [hardware] > [device manager] > inside USB controller find [USB combined device] (Property: Location: Vestax PC-CONTROLLER) > inside sound, video and game controller find [USB Audio device] (Property: Location: Vestax PC-CONTROLLER). If both are displayed and the status is "This device is installed normally", the VCI-100 and computer is connected normally.



## (2) Macintosh

1. Set the power select switch on the rear panel to AC ADAPTOR when using the exclusive AC adaptor. Set to USB BUSS POWER if using USB connection to provide power from your computer.

NOTE: Please use the exclusive power adaptor for stable operation if the USB is connected to a non-powered USB hub or if the computer does not have enough power capacity.

2. Connect the VCI-100 to the computer via USB.

The power LED, Jog wheel, control switch LED will light up.

A window will pop up and say a new device has been detected and drivers for Vestax PC-CONTROLLER, USB combined device and USB audio device will be installed automatically. (The message may not pop up if the driver is installed or if it's not the first time to be connected.)

3. The Data send LED will blink along with each movement of the VCI-100 to indicate the output of the control signals when the drivers have been installed perfectly.

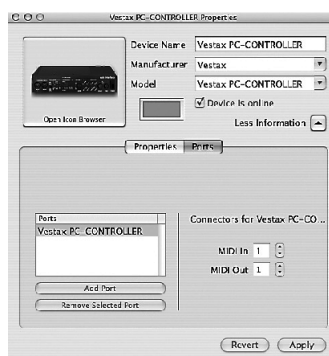
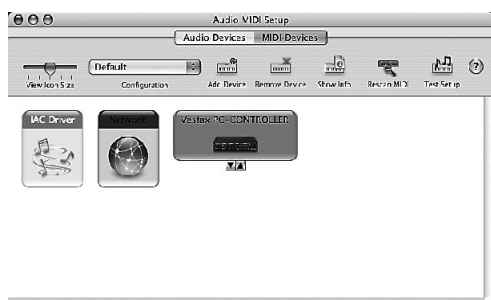
4. to check the connection status in Macintosh, view [Applications] > [Utilities] > [Audio MIDI setting] > [MIDI device] and find "Vestax PC-CONTROLLER". The property shall show,

Device: Vestax PC CONTROLLER

Manufacturer: Vestax

Model: Vestax PC-CONTROLLER

The computer and the VCI-100 are connected normally if the information above is shown.



## (3) Software

MIDI compliant software is required to be installed to your computer to use the VCI-100. The VCI-100 is bundled with pre-control assigned Native Instruments Inc., TRAKTOR LE. If you do not have MIDI compliant DJ software, voluntarily install TRAKTOR LE by following instructions and checking the system requirements.

### 3. Operations

- 1) Check if the software is installed to the computer and OS normally, and is fully functional.
- 2) Check if the VCI-100 and computer is connected normally.
- 3) Check that the software is set to operate with the VCI-100. Open the software's control panel and check that the software is set to receive MIDI data from the VCI-100.
- 4) Check that the VCI-100 and computer is connected and then start up the software to perform settings with the VCI-100. The software may not recognize the VCI-100 if it is connected to the computer after the software has started.
- 5) Operations after the system recovering from power saving mode is not guaranteed.  
Power save settings are required to be set OFF.

Many DJ software products(Native Instruments TRAKTOR, M-AUDIO torq, Ableton Live6, MixVibes) come with a MIDI LEARN function. This function is used to assign switches, knobs and faders of the VCI-100 as controls for parameters of the software.

The VCI-100 can control all software that has this function.

The MIDI LEARN setting for each software is different; please refer to each software's manual for further instructions.

The MIDI CC data created with the knobs, faders and switches can be manually set with the software, if the software does not support the MIDI LEARN function. Please refer to the software's manual for further instructions.

Certain software does not have MIDI OUT functions. If so, functions of the software cannot be assigned to the VCI-100. Please be aware that the Jog wheel of the VCI-100 sends a high-resolution pulse for accurate control but does not operate higher than the receiving software's resolution settings.

(Ex. The play KEY LED's off signal of TRAKTOR 3.0 is not sent to the VCI-100, which leaves the play key LED of the VCI-100 turned ON even if the deck on the screen has stopped. On the other hand, TRAKTOR 3.2 has MIDI out functions and the operations in the screen will match with the VCI-100's LEDs.)



### 3. Part names & Functions

---

Part names and functions are all set to default for easy operation and can be changed to match any style. For example, if you wish to have precise pitch control you can change the setting from 45mm stroke to 60mm stroke.

#### Top Panel

(1) Loop / Sampler section

The loop sampler of the software is assignable.

Lighting Square Push SW: 3 loop plays

Round Small Push SW + LED: 4 selectable loop lengths (1/4, 1/2, 3/4,1)

(2)Cursor Section

File selection and "enter" functions assignable.

Lighting Square Push SW: 4-direction cursor keys & enter key

(3) Pitch / tempo / JOG section (per channel)

Pitch control, key control, pitch range selection, JOG wheel mode selection is assignable.

45mm Fader Volume: 1pce

2 color Lighting Square Push SW: 1pce

Lighting Square Push SW: 3pcs

(4)JOG Wheel section (per channel)

High-resolution rotary pulse generator and touch sensor for control. Search, pitch bend, stop&go, scratch functions assignable.

Touch sense SW: 1pce

Touch sensitivity LED: 1pce

High-resolution pulse generator dial: 1pce

(5)Transport Section (per channel)

PLAY / PAUSE, CUE-PLAY, FF, REW functions assignable.

2 color Lighting Square Push SW: 4pcs

(6)Cross Fader

Vestax's original high quality cross fader. Assignable to the software's cross fader. The cross fader curve is adjustable with the curve adjust volume located on the rear panel. Useful for software's without crossfader curve functions and adjustable to suite curves from long mixes to scratching.

45mm stroke variable curve generate fader : 1pce

(7) Channel section (per channel)

Mixer control functions assignable. Select a function most useful for your play style.

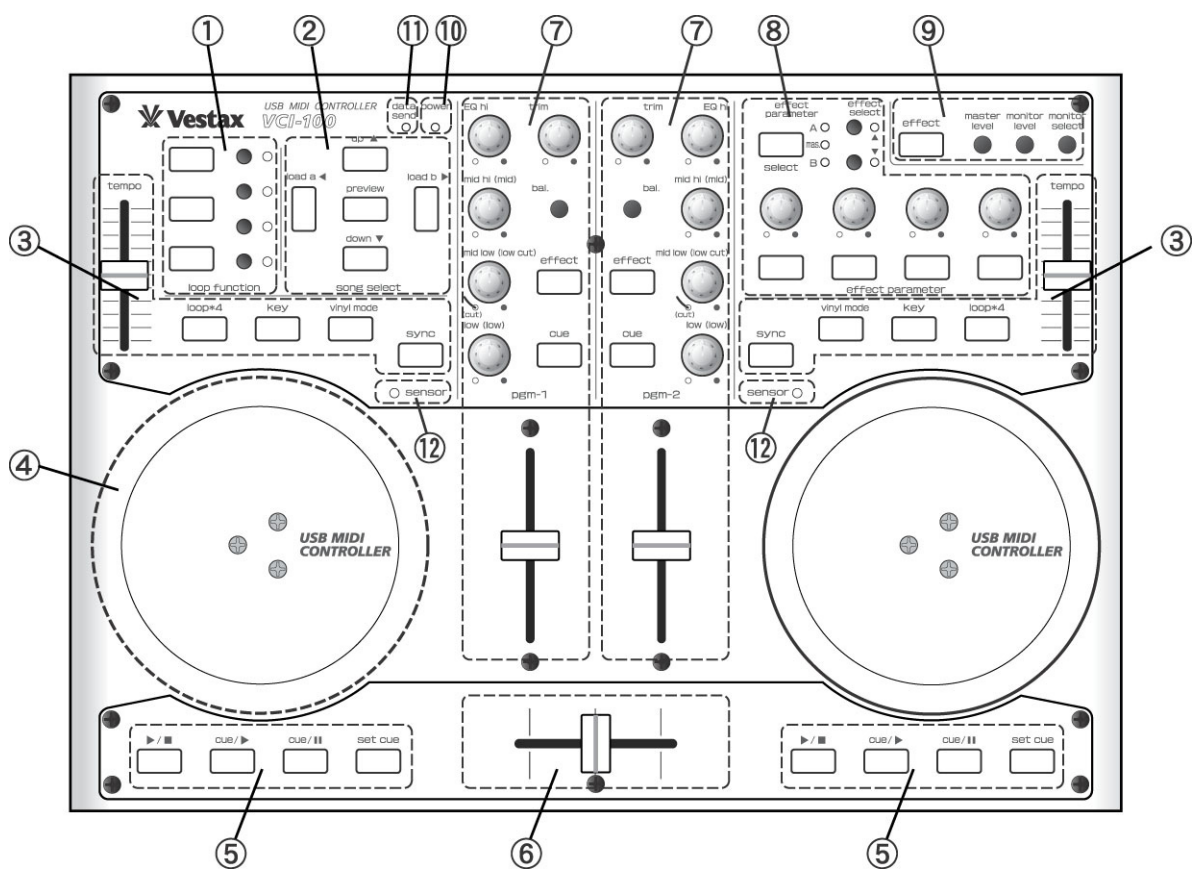
Rotary volume: 5pcs

Small rotary volume: 1pce

2 color Lighting Square Push SW: 1pce

Lighting Square Push SW: 1pce

60mm High quality fader: 1pce



## REAR PANEL SECTION

### (13) Touch Sensitivity level volume

The VCI-100 uses a capacitance type touch sensor, which allows the sensitivity to be controlled with this volume for temperature, humidity and the users capacitance differences. Adjust the sensitivity level by touching the metal part of the JOG wheel and turning the volume, until the sensor LED lights up. The touch sensor will react without direct touch when the sensitivity is at the maximum level.

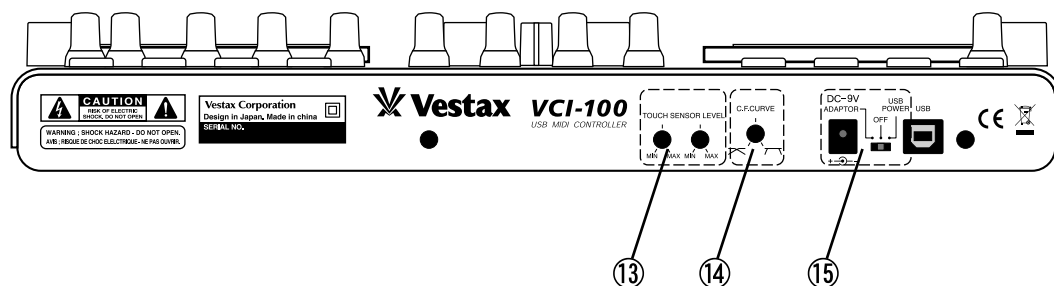
### (14) C.F. curve control volume

The cross fader curve control, an original function added to a DJ mixer by Vestax, has been applied to the VCI-100. The curve is gentle and suitable for long mixes when it's at the minimum, and sharp and suitable for scratching when it's at the Maximum.

### (15) Power SW (Adaptor / OFF / Buss power)

Power switch of the VCI-100. Set the switch to AC ADAPTOR when using the exclusive AC adaptor, set to USB BUSS POWER when using power provided from the computer via USB.

**NOTE:** Please use the exclusive power adaptor for stable operation if the USB is connected to a non-powered USB hub or if the computer does not have enough power capacity.



## 4. Trouble shooting

---

### A) The computer doesn't recognize the VCI-100

We recommend not to connect other USB devices to the computer when mixing / editing with music / video software. USB is a reliable protocol but multimedia software is CPU-intensive to the processor and USB buss. It is possible to connect multiple USB devices to one USB outlet on the computer via hubs, but may cause complicated problems to the hardware and software.

1. Disconnect any other USB devices connected to your computer and see if the VCI-100 is recognized.
2. Open Control Panel >> System >> Select the hardware tab and then click on "Device manager". Click the "+" on the left of "Sound, Video, Game controller". Disconnect the VCI-100 if there is a "?" or "!" mark next to "USB audio device" and check that "USB audio device" disappears from the device manager list. If it disappears, reconnect the VCI-100 to a different USB port and see if the problem is solved.
3. Check if the DJ software is set to use the VCI-100 as its controller. Check the software's preference, or open the control section and check if the software is recognizing "USB audio device" and set to receive MIDI send data from the VCI-100.
4. Check if the USB cable is connected correctly.
5. If the VCI-100 is connected via USB hub, check if the problem solves by connecting directly to the computer.

### B) There's no sound coming from the computer

The VCI-100 is a simple USB MIDI controller and does not input or output any sound data. If the computer does not output sound signals, the relation between the software, OS and hardware is not working normally.

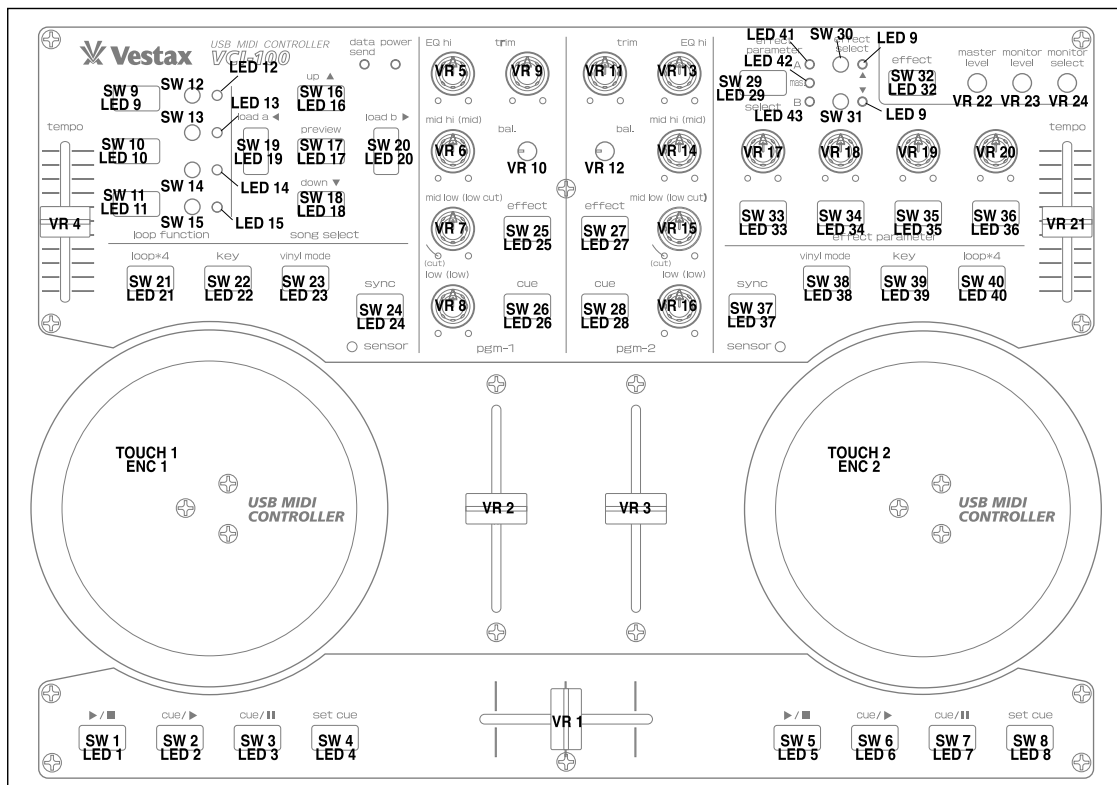
Please contact the software's support center.

### C) The sound doesn't output when the VCI-100 is connected.

The controls assign setting for the VCI-100 and software may be incorrect. Move all volumes, faders and switches to check if the master out, cross fader and monitor volumes level is zero. Also check, which switches the mute control is assigned to.

## 5.MIDI Map

MIDI Channel = ch1		Note: MIDI Note On		CC: MIDI Control Change	
Control	MIDI	Control	MIDI	Control	MIDI
TOUCH1(Jog Mode)	Note C-3(30 hex) (ch1)	VR19(Effect Param = B)	CC76(4C hex) (ch1)		
TOUCH2(Jog Mode)	Note C#3(31 hex) (ch1)	VR20(Effect Param = B)	CC77(4D hex) (ch1)		
ENC1(Jog Mode, TOUCH1=On)	CC16(10 hex) (ch1)				
ENC2(Jog Mode, TOUCH2=On)	CC17(11 hex) (ch1)				
SW1	Note D-3(32 hex) (ch1)	ENC1(TOUCH1=Off, Time Stretch=Off)	Note A#3(3A hex) (ch1)		
SW5	Note F#3(36 hex) (ch1)	ENC1(TOUCH1=Off, Time Stretch=Off)	Note B-3(3B hex) (ch1)		
VR1	CC8(08 hex) (ch1)	ENC2(TOUCH2=Off, Time Stretch=Off)	Note C-4(3C hex) (ch1)		
SW3	Note E-3(34 hex) (ch1)	ENC2(TOUCH2=Off, Time Stretch=Off)	Note C#4(3D hex) (ch1)		
SW7	Note G#3(38 hex) (ch1)	ENC1(Seek Mode, TOUCH1=On)	CC18(12 hex) (ch1)		
SW2	Note D#3(33 hex) (ch1)	ENC2(Seek Mode, TOUCH2=On)	CC19(13 hex) (ch1)		
SW6	Note G-3(37 hex) (ch1)	SW21	Note F#4(42 hex) (ch1)		
SW4	Note F-3(35 hex) (ch1)	SW40	Note G-4(43 hex) (ch1)		
SW8	Note A-3(39 hex) (ch1)	SW22	Note G#4(44 hex) (ch1)		
VR6	CC21(15 hex) (ch1)	SW39	Note A-4(45 hex) (ch1)		
VR6(CENTER)	Note D#0(0F hex) (ch1)	SW26	Note C-5(48 hex) (ch1)		
VR7	CC22(16 hex) (ch1)	SW28	Note C#5(49 hex) (ch1)		
VR7(CENTER)	Note E-0(10 hex) (ch1)	SW25, SW36(Effect Param = A)	Note D-5(4A hex) (ch1)		
VR8	CC23(17 hex) (ch1)	SW27, SW36(Effect Param = B)	Note D#5(4B hex) (ch1)		
VR8(CENTER)	Note F-0(11 hex) (ch1)	SW32, SW36(Effect Param = Mas.)	Note E-5(4C hex) (ch1)		
VR5	CC20(14 hex) (ch1)	SW30(Effect Param = A)	Note F-5(4D hex) (ch1)		
VR5(CENTER)	Note D-0(0E hex) (ch1)	SW30(Effect Param = B)	Note F#5(4E hex) (ch1)		
VR4	CC14(0E hex) (ch1)	SW30(Effect Param = Mas.)	Note G-5(4F hex) (ch1)		
VR4(CENTER)	Note C-0(0C hex) (ch1)	SW31(Effect Param = A)	Note G#5(50 hex) (ch1)		
VR9	CC28(1C hex) (ch1)	SW31(Effect Param = B)	Note A-5(51 hex) (ch1)		
VR9(CENTER)	Note C-1(18 hex) (ch1)	SW31(Effect Param = Mas.)	Note A#5(52 hex) (ch1)		
VR17(Effect Param = Master)	CC84(54 hex) (ch1)	SW33(Effect Param = A)	Note B-5(53 hex) (ch1)		
VR18(Effect Param = Master)	CC85(55 hex) (ch1)	SW33(Effect Param = B)	Note C-6(54 hex) (ch1)		
VR19(Effect Param = Master)	CC86(56 hex) (ch1)	SW33(Effect Param = Mas.)	Note C#6(55 hex) (ch1)		
VR20(Effect Param = Master)	CC87(57 hex) (ch1)	SW34(Effect Param = A)	Note D-6(56 hex) (ch1)		
VR10	CC30(1E hex) (ch1)	SW34(Effect Param = B)	Note D#6(57 hex) (ch1)		
VR10(CENTER)	Note A#0(16 hex) (ch1)	SW34(Effect Param = Mas.)	Note E-6(58 hex) (ch1)		
VR2	CC12(0C hex) (ch1)	SW35(Effect Param = A)	Note F-6(59 hex) (ch1)		
VR12	CC31(1F hex) (ch1)	SW35(Effect Param = B)	Note F#6(5A hex) (ch1)		
VR12(CENTER)	Note B-0(17 hex) (ch1)	SW35(Effect Param = A)	Note G-6(5B hex) (ch1)		
VR11	CC29(1D hex) (ch1)	SW16	Note G#6(5C hex) (ch1)		
VR11(CENTER)	Note C#1(19 hex) (ch1)	SW18	Note A-6(5D hex) (ch1)		
VR3	CC13(0D hex) (ch1)	SW17(Preview Stop -> Play)	Note A#6(5E hex) (ch1)		
VR13	CC24(18 hex) (ch1)	SW17(Preview Play -> Stop)	Note B-6(5F hex) (ch1)		
VR13(CENTER)	Note F#0(12 hex) (ch1)	SW19	Note C-7(60 hex) (ch1)		
VR14	CC25(19 hex) (ch1)	SW20	Note C#7(61 hex) (ch1)		
VR14(CENTER)	Note G-0(13 hex) (ch1)	SW9	Note D-7(62 hex) (ch1)		
VR15	CC26(1A hex) (ch1)	SW10	Note D#7(63 hex) (ch1)		
VR15(CENTER)	Note G#0(14 hex) (ch1)	SW11	Note E-7(64 hex) (ch1)		
VR16	CC27(1B hex) (ch1)	SW12	Note F-7(65 hex) (ch1)		
VR16(CENTER)	Note A-0(15 hex) (ch1)	SW13	Note F#7(66 hex) (ch1)		
VR22	CC7(07 hex) (ch1)	SW14	Note G-7(67 hex) (ch1)		
VR23	CC88(58 hex) (ch1)	SW15	Note G#7(68 hex) (ch1)		
VR24	CC89(59 hex) (ch1)	VR7(MIN)	Note A-7(69 hex) (ch1)		
VR24(CENTER)	Note D-1(1A hex) (ch1)	VR15(MIN)	Note A#7(6A hex) (ch1)		
VR21	CC15(0F hex) (ch1)	SWs relate to Deck A	Note B-7(6B hex) (ch1)		
VR21(CENTER)	Note C#0(0D hex) (ch1)	SWs relate to Deck B	Note C-8(6C hex) (ch1)		
VR17(Effect Param = A)	CC70(46 hex) (ch1)	SW24	Note A#4(46 hex) (ch1)		
VR18(Effect Param = A)	CC71(47 hex) (ch1)	SW37	Note B-4(47 hex) (ch1)		
VR19(Effect Param = A)	CC72(48 hex) (ch1)	ENC1(TOUCH1=Off, Time Stretch=On)	Note C#8(6D hex) (ch1)		
VR20(Effect Param = A)	CC73(49 hex) (ch1)	ENC1(TOUCH1=Off, Time Stretch=On)	Note D-8(6E hex) (ch1)		
VR17(Effect Param = B)	CC74(4A hex) (ch1)	ENC2(TOUCH2=Off, Time Stretch=On)	Note D#8(6F hex) (ch1)		
VR18(Effect Param = B)	CC75(4B hex) (ch1)	ENC2(TOUCH2=Off, Time Stretch=On)	Note E-8(70 hex) (ch1)		



## 6.Specification

POWER SUPPLY:DC 9V 500mA  
 DEMENTIONS:360(W)×252(D)×35(H)  
 WEIGHT: 2.6 kg

1. Functions, designs and system requirements are subject to change without notice.
2. Vestax is a copyright of Vestax corporation.
3. All logos and trademarks printed in this manual resides to the owner.