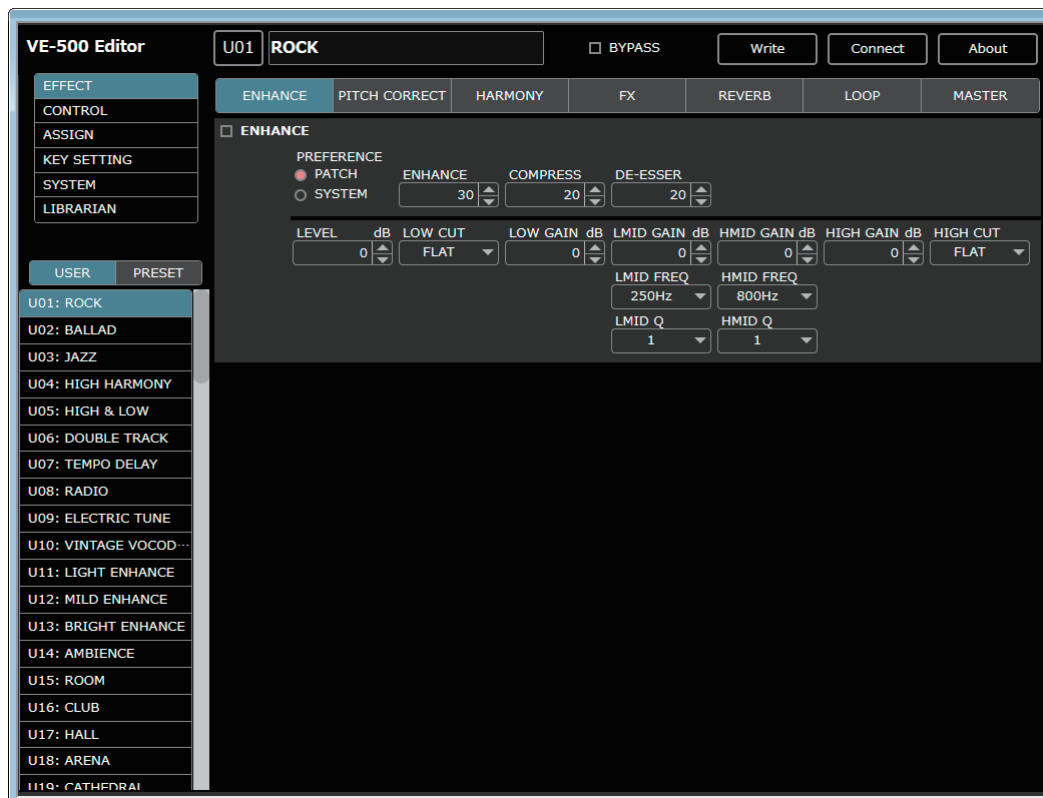


VOCAL PERFORMER VE-500

VE-500 Editor Owner's Manual



Overview

This software provides the following functionality.

- Editing the VE-500's PATCH and SYSTEM parameters
- Managing the VE-500's patches (LIBRARIAN)
- Backing up all of the VE-500's patches (LIBRARIAN IMPORT/EXPORT)

Required items

A commercially available Micro USB cable
VE-500

Note

- Don't operate the VE-500 while VE-500 Editor is communicating with the VE-500 unit.
- Do not use a charging-only Micro USB cable. This type of cable cannot transfer data.

Installing VE-500 Editor

Windows Users

1. Unpack the Zip file.
2. Double-click “VE-500 Editor Installer.exe.”
Installation begins.
3. Proceed with installation as directed by the install screens.
4. When the screen indicates “Completing the VE-500 Editor Setup Wizard,” click the [Finish] button.

Mac Users

1. Unpack the Zip file.
2. Double-click “VE-500 Editor Installer.pkg.”
Installation begins.
3. Proceed with installation as directed by the install screens.
4. When the screen indicates “The installation was successful. The software was installed,” click the [Close] button.

Uninstalling VE-500 Editor

Windows Users

1. Click the Windows [Start] button, and then click [Control Panel].
The control panel appears.
2. Click [Uninstall a Program] or [Programs and Features].
3. Double-click [VE-500 Editor].
Uninstallation begins.
4. Proceed with uninstallation as directed by the uninstall screen.
5. When the screen indicates “VE-500 Editor was successfully removed from your computer,” click the [OK] button.

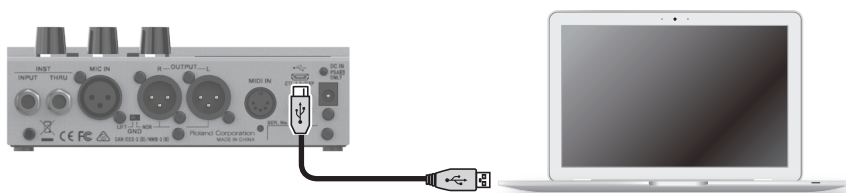
Mac Users

1. In the Finder menu, click [Go], and then click [Applications].
2. From the “BOSS” folder, drag and drop the “VE-500 Editor” file into the trash.

Initial Settings

Connecting to a Computer

Using a commercially available Micro USB cable, connect the USB port of your computer with the MICRO USB port of the VE-500.



Note

You must install the USB driver before connecting to a computer.

Please download the USB driver from the BOSS website.

Install this special driver before making a USB connection.

Download the USB driver from the BOSS website. For details, refer to Readme.htm which is included in the download.

➔ <https://www.boss.info/support/>

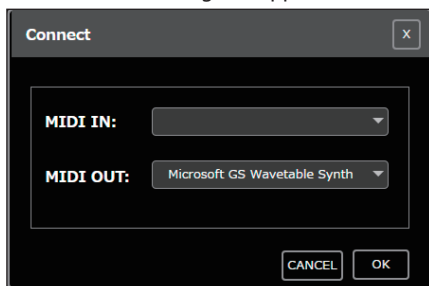
The program you need to use, and the steps you need to take to install the USB driver will differ depending on your computer setup, so please carefully read and refer to the Readme.htm file that comes with the download.

Making Settings in VE-500 Editor

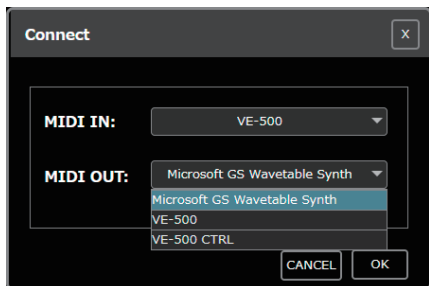
1. Double-click the VE-500 Editor icon to start the software.

Wait until the software has finished starting.

The **“Connect”** dialog box appears.



2. For MIDI IN and OUT, select “VE-500.”



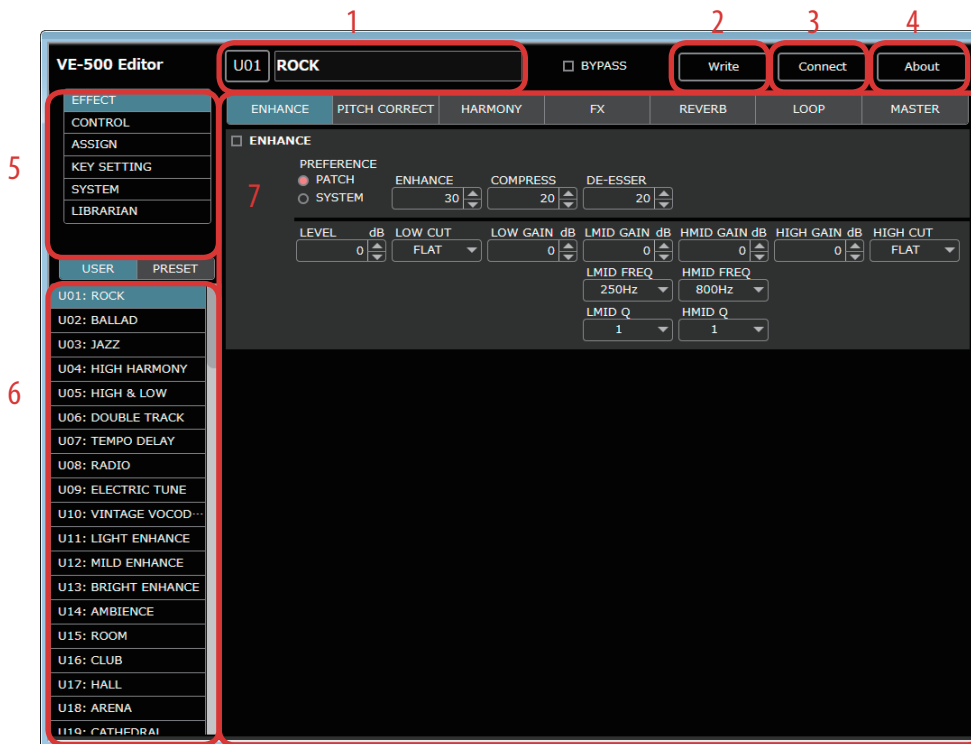
3. Click the [OK] button.

If connections are correct, the editor automatically starts communicating with the VE-500.

The connection settings you select here are automatically saved on the computer. The next time you start the software, connection occurs automatically.

If you want to reconnect, click the **[Connect]** button (p. 4). The **“Connect”** dialog box appears.

Screen Descriptions



1. Patch information area

2. [Write] button

Sends the edited patch settings to the VE-500 unit and writes them.

3. [Connect] button

4. [About] button

5. Function select area

6. Patch select area

7. Parameter editing area

Editing the Parameters

Editing Patch Parameters

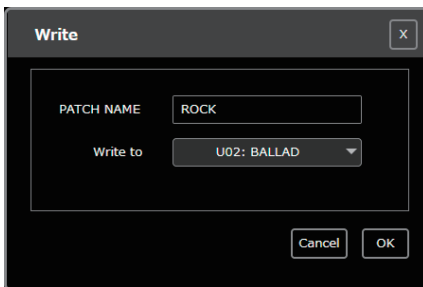
1. In the function select area (5), click [EFFECT], [CONTROL], [ASSIGN], or [KEY SETTING].
2. In the patch select area (6), select the patch that you want to edit.
3. You can edit the parameters in the Parameter editing area (7).

Writing Patch Parameters to the VE-500

When you execute this operation, the parameters you edited in VE-500 Editor are applied to the VE-500 unit itself.

1. Click [WRITE] (2).

The "WRITE" dialog box appears.



2. Edit the patch name in the "PATCH NAME" field.
3. Select a write-destination patch in the "Write to" field.
4. Click [OK].

The edited content is written to the write-destination that you selected.

* Be aware that if you edit the patch or use the librarian (p. 6) without executing [WRITE], the changes you made are discarded.

Editing the SYSTEM Parameters

1. In the function select area (5), select the function that you want to edit.
2. In the parameter editing area (7), edit the parameters.

The edited settings are automatically written to the VE-500 unit.

Saving System Parameters to a File

1. In the function select area (5), click [SYSTEM].
2. Click [Backup].
3. Select the save-destination, and make settings.
4. Click [Save].

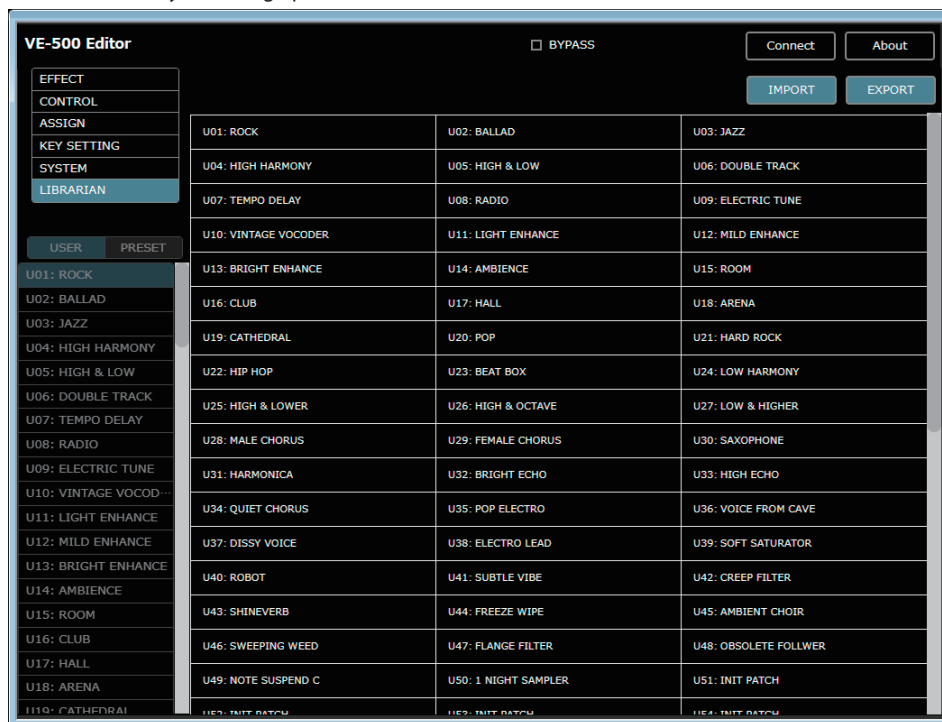
Restoring System Parameters from a File to the VE-500

1. In the function select area (5), click [SYSTEM].
2. Click [Restore].
3. Select a file that you previously saved.
4. Click [Open].
5. The "Restore" dialog box appears.
6. Click [OK].

The system parameters that were saved in the file are restored into the VE-500.

About the Librarian

When you click [**LIBRARIAN**], the librarian screen appears.
The librarian lets you manage patches.



Changing the Order of the Patches

1. To move a patch, drag and drop it in the location you want.

The patch numbers are swapped between the selected patch and the patch on which you dropped it.

You can select multiple patches by holding down the [**Shift**] key or [**Ctrl**] key while you perform this operation.

If you select multiple patches, they are processed in order of the patch number.

Example: If you select U01, U05, and U10, and drag to U17

The following patches are swapped.

- U01 and U17
- U05 and U18
- U10 and U19

Renaming a Patch

1. Double-click a patch to edit its patch name.

When you edit a patch name, the patch name is transmitted to the VE-500 unit.

Copying a Patch

1. Right-click a patch to access the context menu, and click [**COPY**].

The patch parameters are saved to a dedicated clipboard.

You can select multiple patches by holding down the [**Shift**] key or [**Ctrl**] key while you perform this operation.

2. At the copy-destination, right-click to access the context menu, and click [**PASTE**].

The contents of the clipboard are overwritten to the VE-500 unit.

If you select multiple patches, they are processed in order of the patch number.

Example: If you select U01, U05, and U10, copy them, and then paste to U17

Patches are copied as follows.

- U01 and U17
- U05 and U18
- U10 and U19

Saving the Selected Patch(es) to a File

1. Select the patch(es) that you want to save, right-click to access the context menu, and click [EXPORT].

You can select multiple patches by holding down the [Shift] key or [Ctrl] key while you perform this operation.

2. Select the save-destination to specify it.

3. Click [Save].

The editor communicates with the VE-500 unit, and creates a file that includes the selected patch(es).

If you select multiple patches, they are processed in order of the patch number.

For Mac

You can select multiple patches by holding down the [shift] key or [option] key while you perform this operation.

And you can access the context menu by clicking while holding down the [control] key.

Saving All of the VE-500's Patches (EXPORT)

1. Click [EXPORT].

2. Select the save-destination, and make settings.

3. Click [Save].

Communication occurs with the VE-500 unit, and all patches are saved to a file.

Importing Patches from a File to the VE-500 (IMPORT)

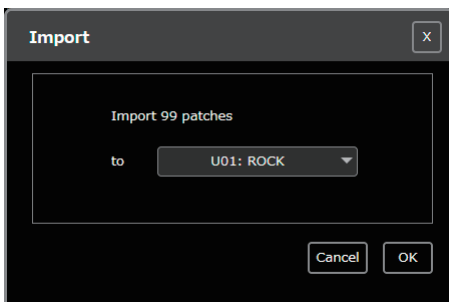
1. Click [IMPORT].

2. Select a file in which you saved the patches.

3. Click [Open].

The "Import" dialog box appears.

4. Use the "to" field to select the starting patch for the destination.



5. Click [OK].

The settings saved in the file are imported into the VE-500, starting with the selected patch.