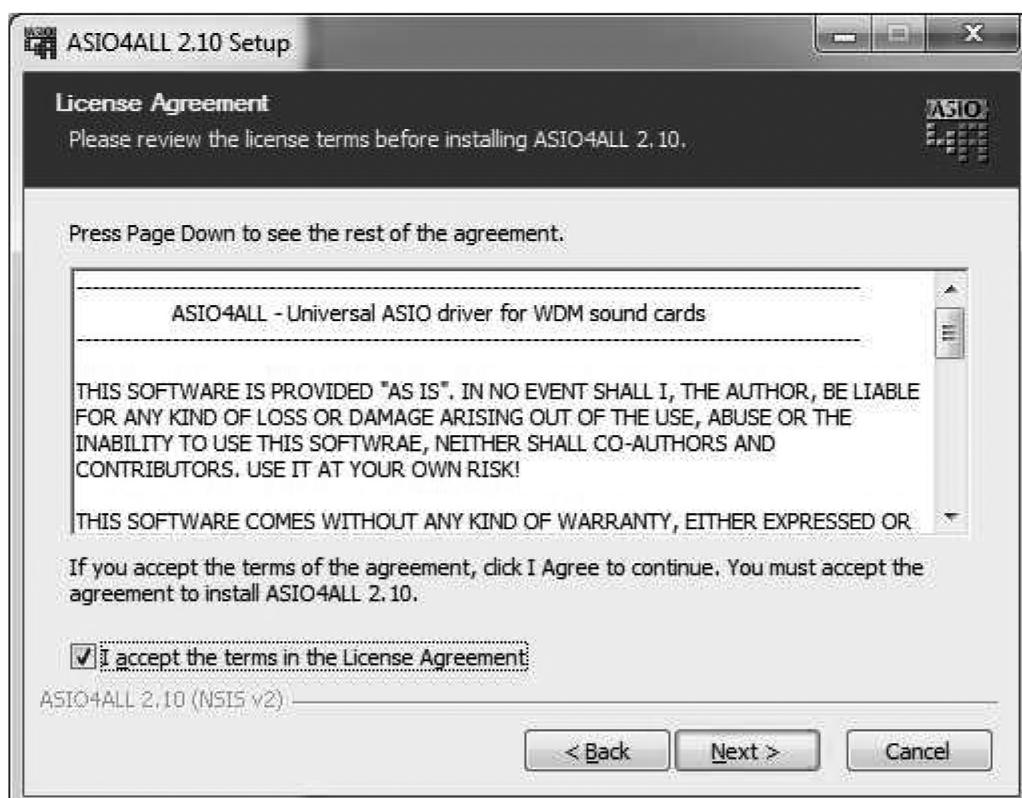


# Ultra-III USB Driver and Set-Up Instructions for PC

Visit [www.asio4all.com](http://www.asio4all.com) to download your driver. After you download your driver, follow the on-screen instructions or the instructions below.

## ASIO4ALL

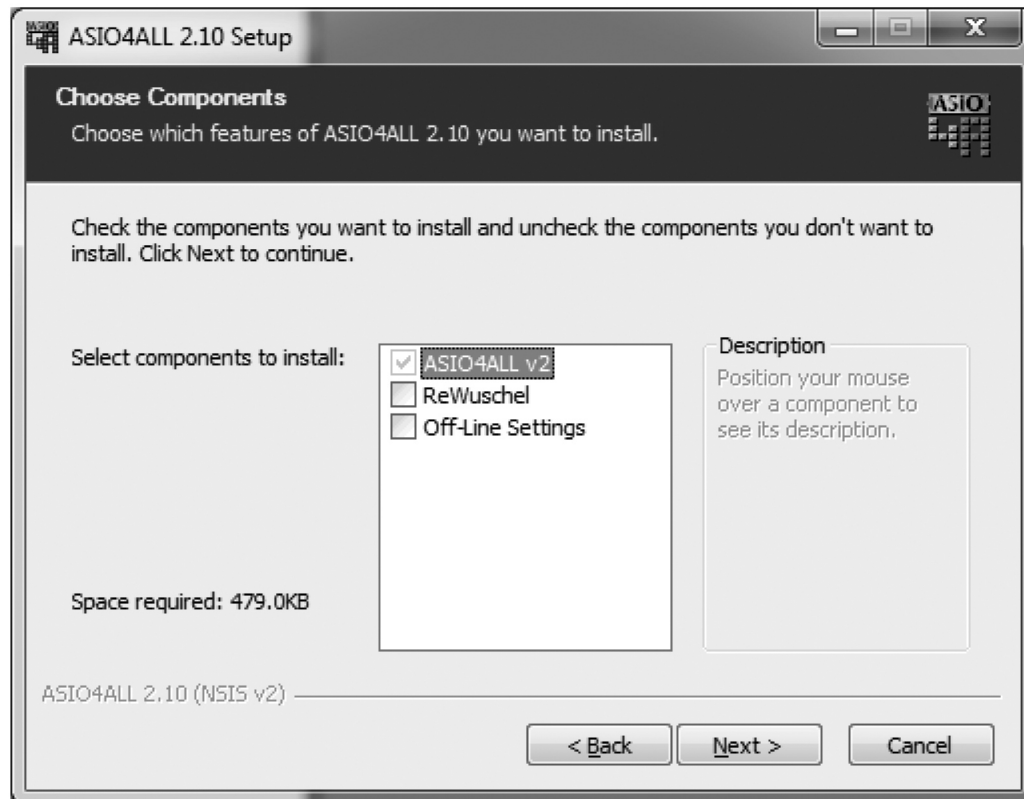
The installation is easy. Just follow the instructions/suggestions



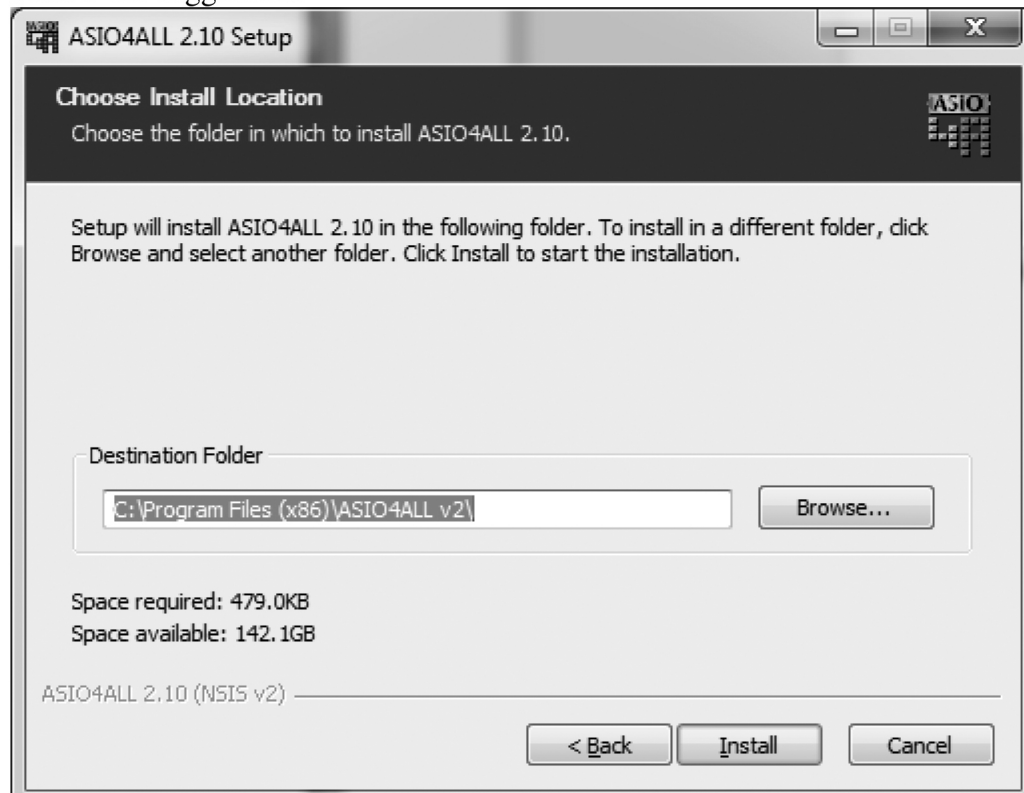
**Epiphone**  
performance is our passion

[www.epiphone.com](http://www.epiphone.com)

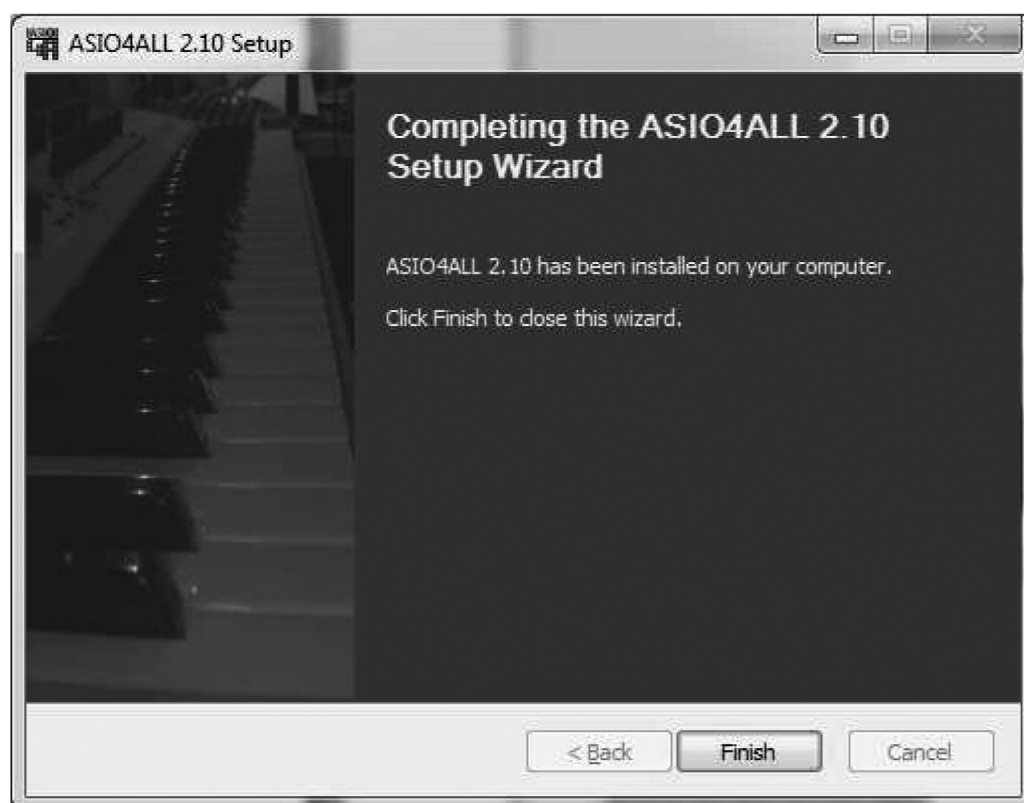
## Ultra-III USB Driver and Set-up Instructions for PC - *continued 2*



Follow the suggestions:



## Ultra-III USB Driver and Set-up Instructions for PC - *continued 3*

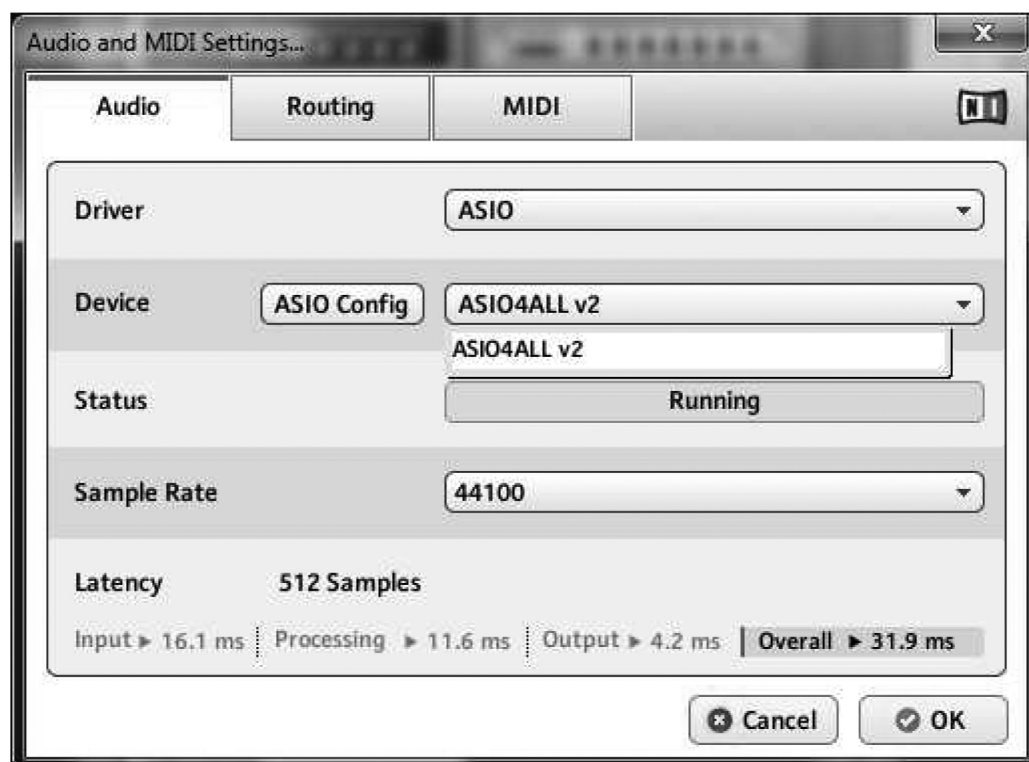
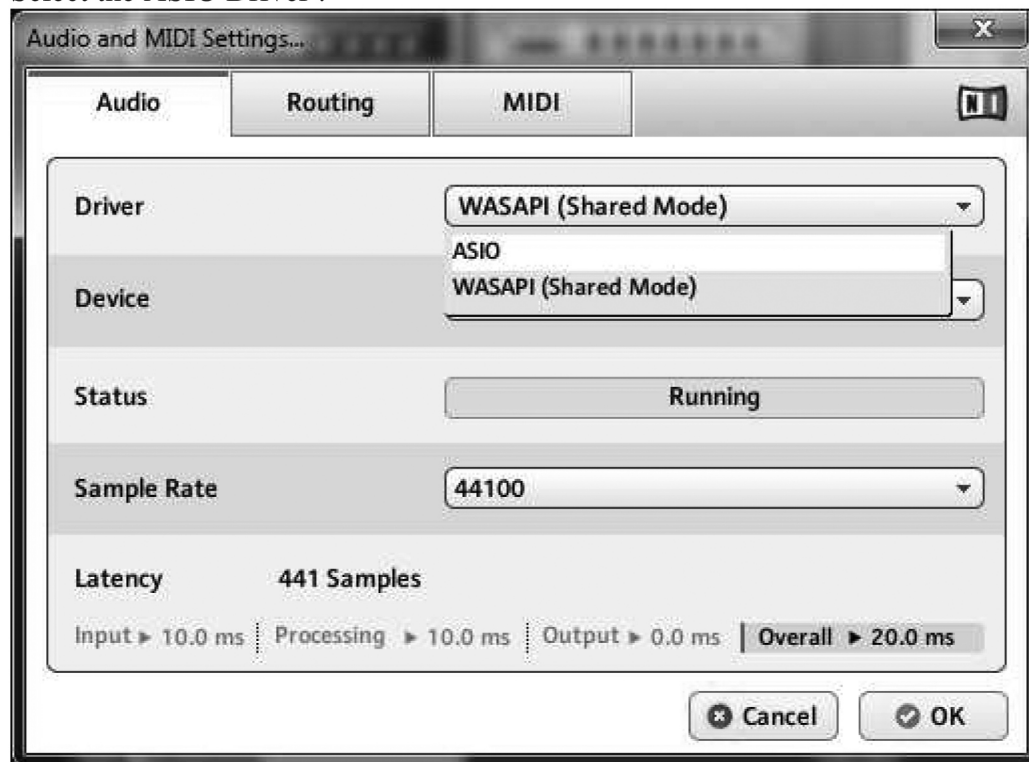


## Ultra-III USB Driver and Set-up Instructions for PC - *continued 4*

Before your driver will work with your Ultra-III, you need to configure your PC computer. Please follow the instructions below.

### Setup the ASIO Driver

Select the ASIO Driver :





## Ultra-III USB Driver and Set-up Instructions for PC - *continued 5*

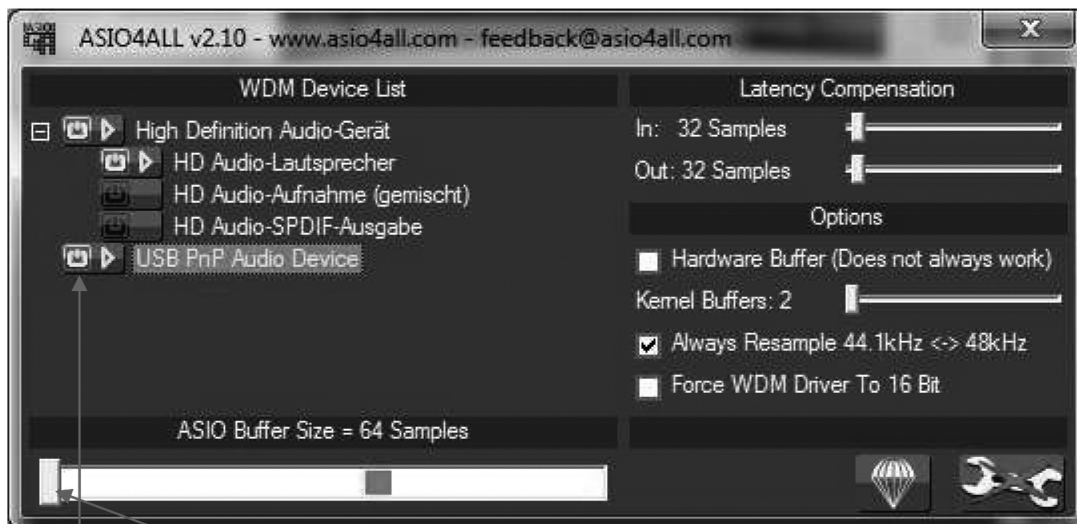
### ***Click on ASIO Config***

Then on the jaw wrench symbol in the lower right corner to setup the soundcards



***Now you can setup:***

### ***1) INPUT***



Select USB PnP Audio Device and (This is the LP USB)

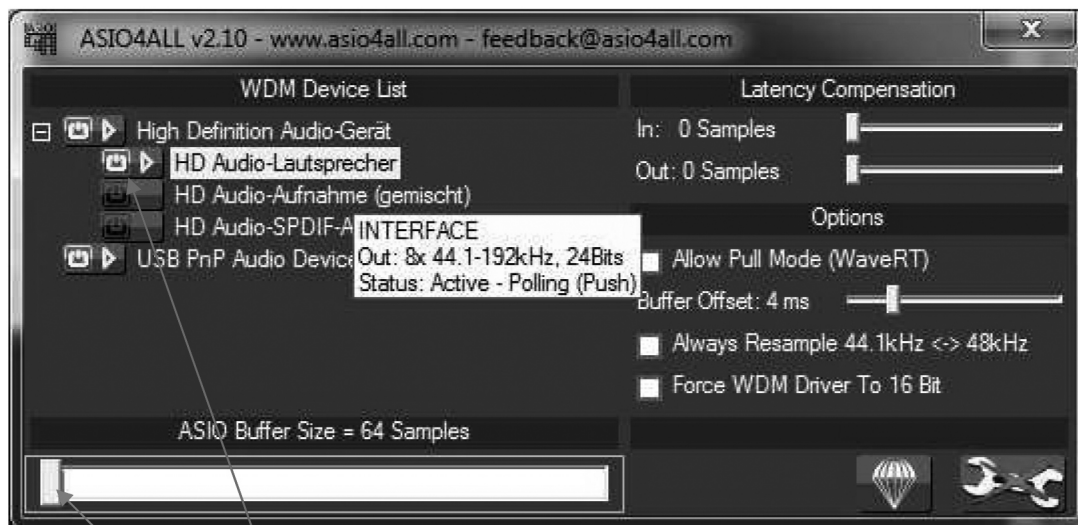
Then setup the Buffer size. Try to use 64 Samples. This should work on all newer PC's.

If you have an older PC then you should increase the value until your sound is OK.

But I found out that also my very old PC is working with 64 samples...

## Ultra-III USB Driver and Set-up Instructions for PC - *continued 6*

### 2) OUTPUT



Now setup you SoundCard in your PC.

Then setup the Buffer size. Try to use 64 Samples. This should work on all newer PC's.

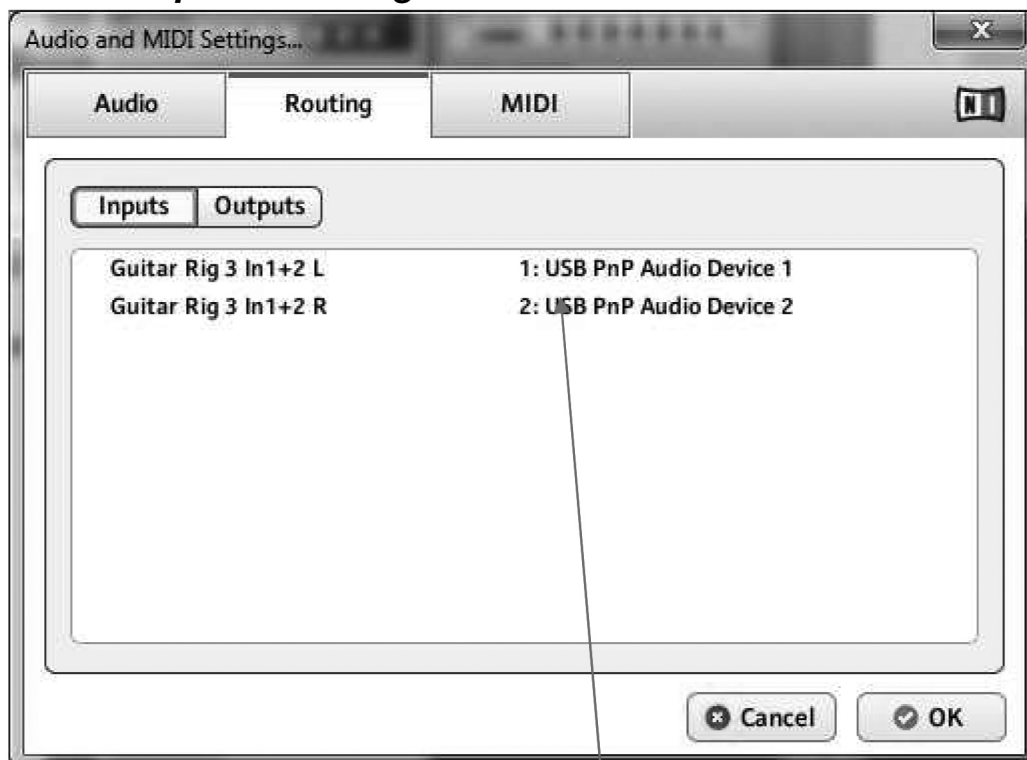
If you have an older PC then you should increase the value until your sound is OK.

I found out that my very old PC need a setup of at least 96 samples.

(Selecting "Allow Pull Mode" improves the latency on some soundcards – pls. try!)

When the setup is finish just close the setup Box (X upper right corner)

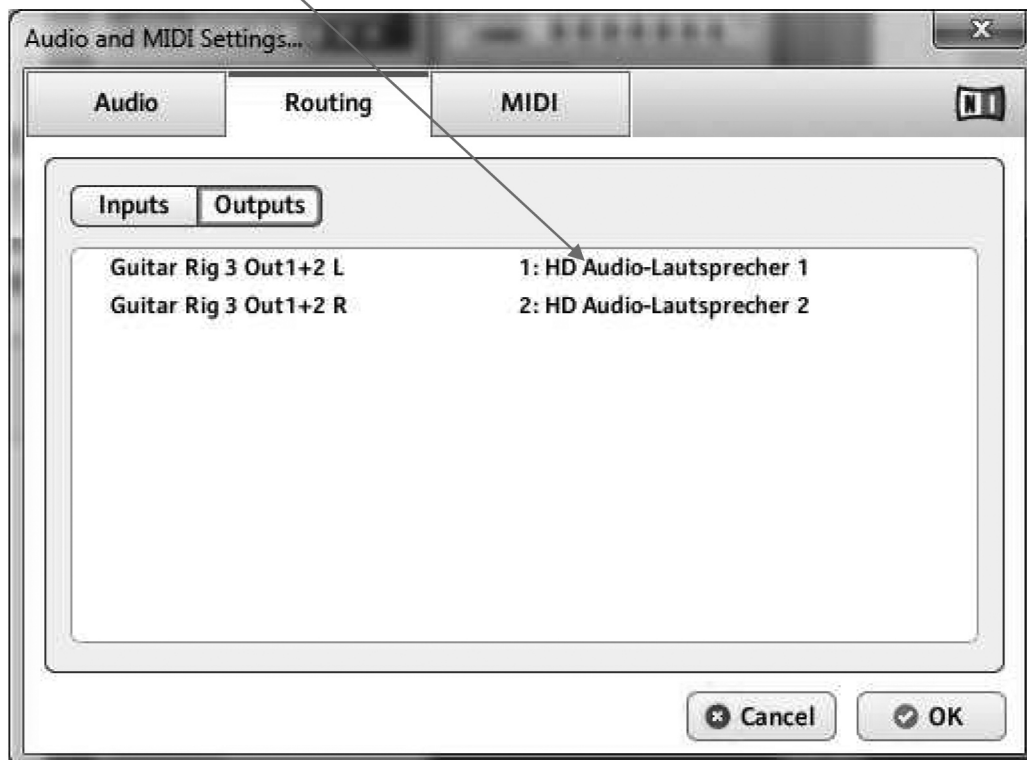
### ***Now setup the Routing as follows:***



**Choose USB PnP Audio Device as Input**

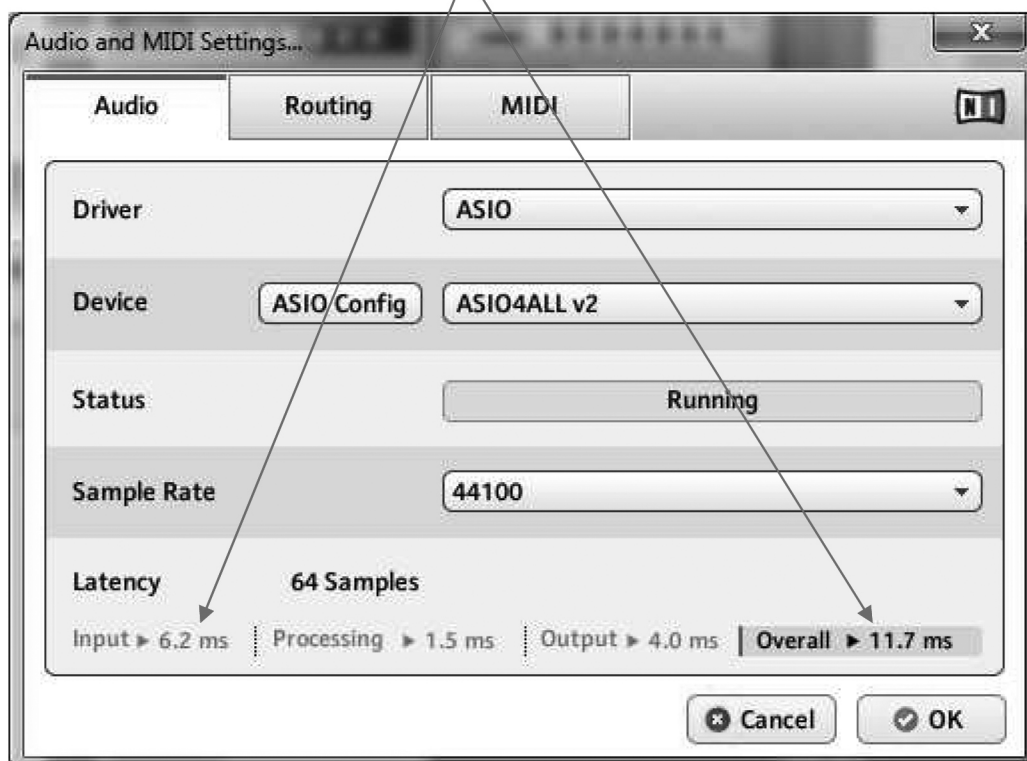
## Ultra-III USB Driver and Set-up Instructions for PC - *continued* 7

and your speakers as Output



That's all and now it should work.

***If you go back to the Audio Tab, you can see the approx. measurement of the latency time:***



Have fun!

# Ultra-III USB Driver and Set-Up Instructions for Mac

## Using Epiphone LP-Ultra 3 USB with Native Instruments Guitar Rig

*This example uses a MacBook Pro together with a Epiphone LP Ultra 3*

### 1) Install Guitar Rig 4

You can download the latest software from Native Instruments:

<http://www.native-instruments.com>

Requirements: Mac OS X

### 2) Connect your LPU3 with the Mac

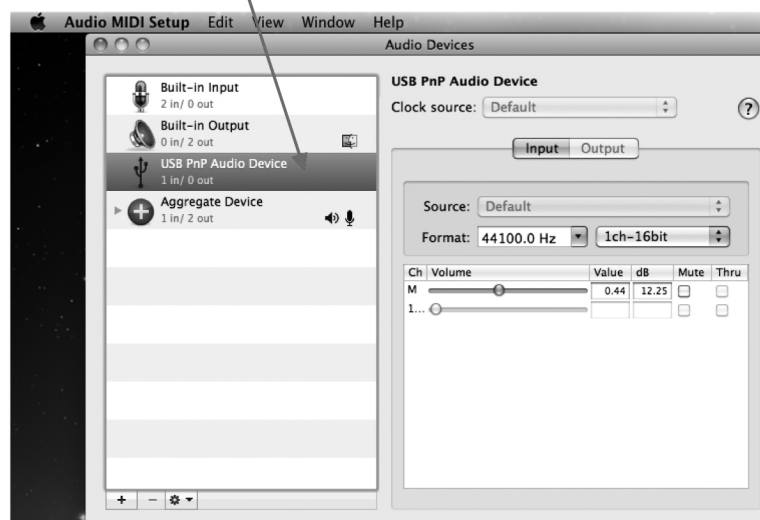
Insert the USB Cable between LPU3 and your Mac. Your LPU3 does not need any additional driver.

### 3) Setup the Input and Output

Open the Utilities in your Application Folder:



and select the USB PnP Audio Device. This is your new LPU-3 USB unit

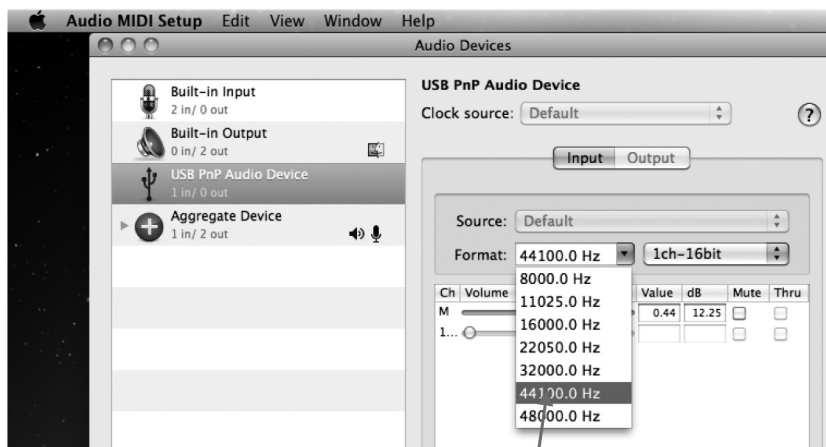


**Epiphone**  
performance is our passion

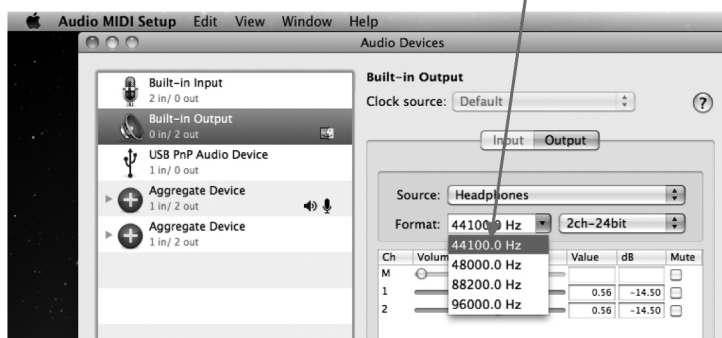
[www.epiphone.com](http://www.epiphone.com)

## Ultra-III USB Driver and Set-up Instructions for Mac - *continued 2*

Adjust the sample rate by choosing the desired value. 44100 will have good sound quality. To achieve minimum latency time (*neccessary delay to compute the audio data*) we strongly recommend using the same sample rate for IN- and OUTPUT!



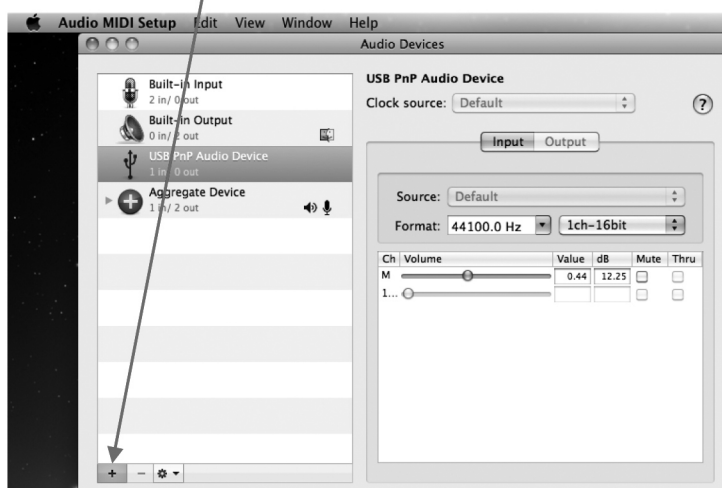
To setup your OUTPUT sample rate select Built-in Output and select 44100 too.



### 4) Setup your own Aggregate Device

This is needed to setup which Input (Here: LPU3 USB) should go to a specified output. In this example we will use the internal speakers. But you can connect an amplifier to your headphone output jack too.

First click on the + to add your own Aggregate Device:



## Ultra-III USB Driver and Set-up Instructions for Mac - *continued 3*

A new Aggregate Device is added:



Now we will setup the routing of your IN- and OUTPUT as follows:



Select the USB PnP Audio Device and set the mark in the "Use" column to activate the input. Then select the Built-In Output and set the mark too to activate the output.

Be sure to remove all marks on the "Resample" row - this improves the latency!

Finally you can give the new added Aggregate Device an own name. This makes it easier to setup in other applications. Just click on the name and enter your own. In this case e.g.: "My Sound".

This is all to setup your hardware to the Mac.

### 5) Setup the Guitar Rig to the Mac Hardware

In the Applications folder open the Native Instruments folder

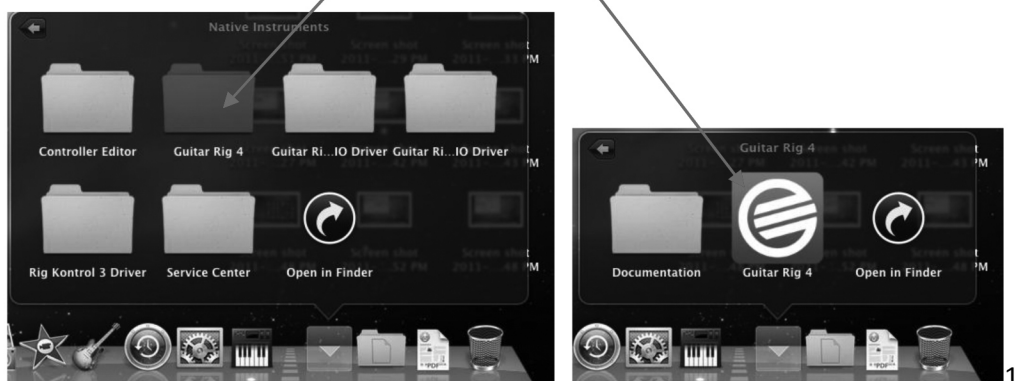


**Epiphone**  
performance is our passion

[www.epiphone.com](http://www.epiphone.com)

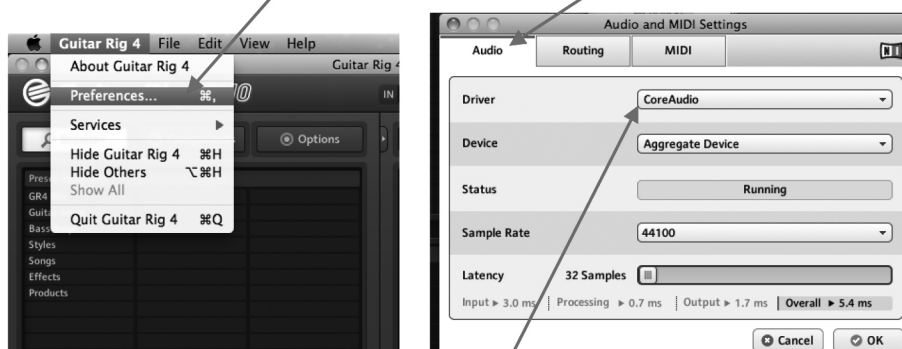
## Ultra-III USB Driver and Set-up Instructions for Mac - *continued 4*

Then open the Guitar Rig 4 folder and start Guitar Rig 4



### 6) Guitar Rig Preferences

In Guitar Rig open the Preferences, and select the Audio tab



First, if it is not already set - select the CoreAudio

Then select your just prepared "My Sound" device:

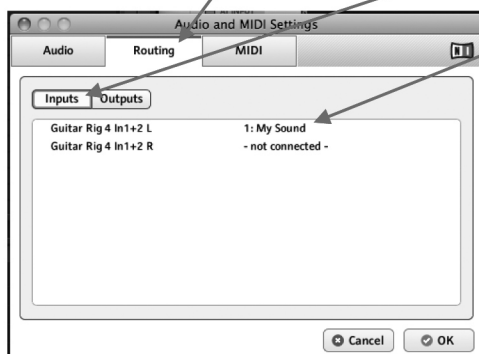


Move the Latency slider to the left: 32 Samples. In case of crackled sound you can test higher latencies above 32 samples. Pls. note that a smaller value of samples will improve the latency. So try to use the lowest amount of samples for good sound results!

## Ultra-III USB Driver and Set-up Instructions for Mac - *continued* 5

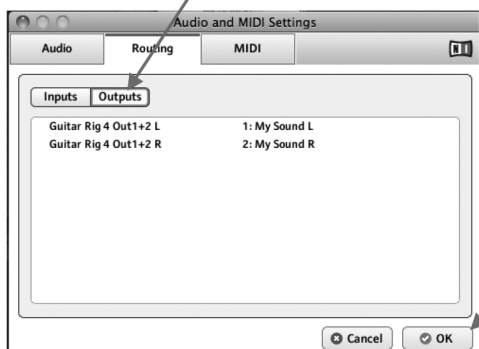
### 7) Routing

Select the Routing Tab, then select Inputs and choose "My Sound" as Input device



Because it is mono you can select just 1 channel!

Finally click on Outputs to set the output channels:



If not already set, select "My Sound L" and "My Sound R" as outputs.

Click OK to close the Audio and MIDI Settings

Now you are ready to play your LPU3 with Guitar Rig.

## Have Fun!