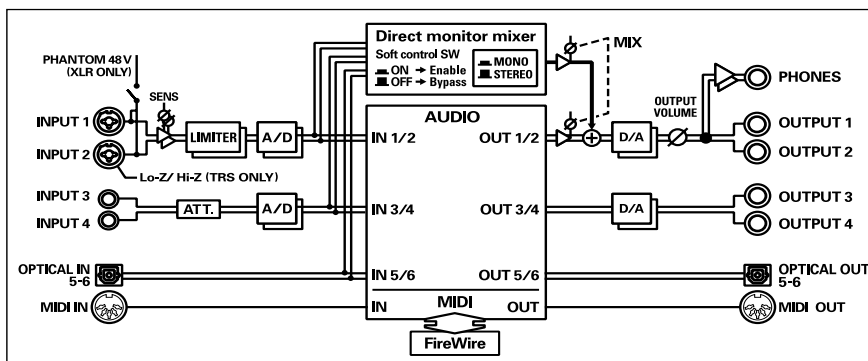


EDIROL

FireWire AudioCapture **FA-66**

OWNER'S MANUAL

Before using this unit, carefully read the sections entitled: "USING THE UNIT SAFELY" and "IMPORTANT NOTES" (p. 3–p. 6). These sections provide important information concerning the proper operation of the unit. Additionally, in order to feel assured that you have gained a good grasp of every feature provided by your new unit, OWNER'S MANUAL should be read in its entirety. The manual should be saved and kept on hand as a convenient reference.



Copyright © 2005 ROLAND CORPORATION

All rights reserved. No part of this publication may be reproduced in any form without the written permission of ROLAND CORPORATION.

For the U.K.

IMPORTANT: THE WIRES IN THIS MAINS LEAD ARE COLOURED IN ACCORDANCE WITH THE FOLLOWING CODE.

BLUE: NEUTRAL
BROWN: LIVE

As the colours of the wires in the mains lead of this apparatus may not correspond with the coloured markings identifying the terminals in your plug, proceed as follows:

The wire which is coloured BLUE must be connected to the terminal which is marked with the letter N or coloured BLACK.

The wire which is coloured BROWN must be connected to the terminal which is marked with the letter L or coloured RED.

Under no circumstances must either of the above wires be connected to the earth terminal of a three pin plug.

For EU Countries



This product complies with the requirements of European Directive 89/336/EEC.

For the USA

FEDERAL COMMUNICATIONS COMMISSION RADIO FREQUENCY INTERFERENCE STATEMENT

This equipment has been tested and found to comply with the limits for a Class B digital device, pursuant to Part 15 of the FCC Rules. These limits are designed to provide reasonable protection against harmful interference in a residential installation. This equipment generates, uses, and can radiate radio frequency energy and, if not installed and used in accordance with the instructions, may cause harmful interference to radio communications. However, there is no guarantee that interference will not occur in a particular installation. If this equipment does cause harmful interference to radio or television reception, which can be determined by turning the equipment off and on, the user is encouraged to try to correct the interference by one or more of the following measures:

- Reorient or relocate the receiving antenna.
- Increase the separation between the equipment and receiver.
- Connect the equipment into an outlet on a circuit different from that to which the receiver is connected.
- Consult the dealer or an experienced radio/TV technician for help.

This device complies with Part 15 of the FCC Rules. Operation is subject to the following two conditions:

(1) This device may not cause harmful interference, and

(2) This device must accept any interference received, including interference that may cause undesired operation.

Unauthorized changes or modification to this system can void the users authority to operate this equipment.

This equipment requires shielded interface cables in order to meet FCC class B Limit.

For Canada

NOTICE

This Class B digital apparatus meets all requirements of the Canadian Interference-Causing Equipment Regulations.

AVIS

Cet appareil numérique de la classe B respecte toutes les exigences du Règlement sur le matériel brouilleur du Canada.

For the USA

DECLARATION OF CONFORMITY Compliance Information Statement

Model Name : FA-66

Type of Equipment : FireWire Audio Interface

Responsible Party : Roland Corporation U.S.

Address : 5100 S. Eastern Avenue Los Angeles, CA 90040-2938

Telephone : (323) 890 3700




USING THE UNIT SAFELY

INSTRUCTIONS FOR THE PREVENTION OF FIRE, ELECTRIC SHOCK, OR INJURY TO PERSONS

About ⚠ WARNING and ⚠ CAUTION Notices







⚠ WARNING	Used for instructions intended to alert the user to the risk of death or severe injury should the unit be used improperly.
⚠ CAUTION	Used for instructions intended to alert the user to the risk of injury or material damage should the unit be used improperly. * Material damage refers to damage or other adverse effects caused with respect to the home and all its furnishings, as well to domestic animals or pets.

About the Symbols






	The ⚠ symbol alerts the user to important instructions or warnings. The specific meaning of the symbol is determined by the design contained within the triangle. In the case of the symbol at left, it is used for general cautions, warnings, or alerts to danger.
	The ⚡ symbol alerts the user to items that must never be carried out (are forbidden). The specific thing that must not be done is indicated by the design contained within the circle. In the case of the symbol at left, it means that the unit must never be disassembled.
	The ⚡ symbol alerts the user to things that must be carried out. The specific thing that must be done is indicated by the design contained within the circle. In the case of the symbol at left, it means that the power-cord plug must be unplugged from the outlet.

ALWAYS OBSERVE THE FOLLOWING

⚠ WARNING

- Before using this unit, make sure to read the instructions below, and the Owner's Manual. 
- Do not open (or modify in any way) the unit or its AC adaptor. 
- Do not attempt to repair the unit, or replace parts within it (except when this manual provides specific instructions directing you to do so). Refer all servicing to your retailer, the nearest Roland Service Center, or an authorized Roland distributor, as listed on the "Information" page. 
- Never use or store the unit in places that are:
 - Subject to temperature extremes (e.g., direct sunlight in an enclosed vehicle, near a heating duct, on top of heat-generating equipment); or are
 - Damp (e.g., baths, washrooms, on wet floors); or are
 - Humid; or are
 - Exposed to rain; or are
 - Dusty; or are
 - Subject to high levels of vibration. 
- Make sure you always have the unit placed so it is level and sure to remain stable. Never place it on stands that could wobble, or on inclined surfaces. 
- Be sure to use only the AC adaptor supplied with the unit. Also, make sure the line voltage at the installation matches the input voltage specified on the AC adaptor's body. Other AC adaptors may use a different polarity, or be designed for a different voltage, so their use could result in damage, malfunction, or electric shock. 

⚠ WARNING

- Use only the attached power-supply cord. Also, the supplied power cord must not be used with any other device. 
- Do not excessively twist or bend the power cord, nor place heavy objects on it. Doing so can damage the cord, producing severed elements and short circuits. Damaged cords are fire and shock hazards! 
- This unit, either alone or in combination with an amplifier and headphones or speakers, may be capable of producing sound levels that could cause permanent hearing loss. Do not operate for a long period of time at a high volume level, or at a level that is uncomfortable. If you experience any hearing loss or ringing in the ears, you should immediately stop using the unit, and consult an audiologist. 
- Do not allow any objects (e.g., flammable material, coins, pins); or liquids of any kind (water, soft drinks, etc.) to penetrate the unit. 

- Immediately turn the power off, remove the AC adaptor from the outlet, and request servicing by your retailer, the nearest Roland Service Center, or an authorized Roland distributor, as listed on the "Information" page when:
 - The AC adaptor, the power-supply cord, or the plug has been damaged; or
 - If smoke or unusual odor occurs
 - Objects have fallen into, or liquid has been spilled onto the unit; or
 - The unit has been exposed to rain (or otherwise has become wet); or
 - The unit does not appear to operate normally or exhibits a marked change in performance.

WARNING

- Immediately turn the power off, and request servicing by your retailer, the nearest Roland Service Center, or an authorized Roland distributor, as listed on the “Information” page when:
 - If smoke or unusual odor occurs
 - Objects have fallen into, or liquid has been spilled onto the unit; or
 - The unit has been exposed to rain (or otherwise has become wet); or
 - The unit does not appear to operate normally or exhibits a marked change in performance.
- In households with small children, an adult should provide supervision until the child is capable of following all the rules essential for the safe operation of the unit.
- Protect the unit from strong impact. (Do not drop it!)
- Do not force the unit’s power-supply cord to share an outlet with an unreasonable number of other devices. Be especially careful when using extension cords—the total power used by all devices you have connected to the extension cord’s outlet must never exceed the power rating (watts/ampères) for the extension cord. Excessive loads can cause the insulation on the cord to heat up and eventually melt through.
- Before using the unit in a foreign country, consult with your retailer, the nearest Roland Service Center, or an authorized Roland distributor, as listed on the “Information” page.
- DO NOT play a CD-ROM disc on a conventional audio CD player. The resulting sound may be of a level that could cause permanent hearing loss. Damage to speakers or other system components may result.

CAUTION

- The unit and the AC adaptor should be located so their location or position does not interfere with their proper ventilation.
- Always grasp only the plug on the AC adaptor cord when plugging into, or unplugging from, an outlet or this unit.
- At regular intervals, you should unplug the AC adaptor and clean it by using a dry cloth to wipe all dust and other accumulations away from its prongs. Also, disconnect the power plug from the power outlet whenever the unit is to remain unused for an extended period of time. Any accumulation of dust between the power plug and the power outlet can result in poor insulation and lead to fire.
- Try to prevent cords and cables from becoming entangled. Also, all cords and cables should be placed so they are out of the reach of children.
- Never climb on top of, nor place heavy objects on the unit.
- Never handle the AC adaptor or its plugs with wet hands when plugging into, or unplugging from, an outlet or this unit.
- Before moving the unit, disconnect the AC adaptor and all cords coming from external devices.
- Disconnect all cords coming from external devices before moving the unit.
- Before cleaning the unit, turn off the power and unplug the AC adaptor from the outlet.
- Whenever you suspect the possibility of lightning in your area, disconnect the AC adaptor from the outlet.
- Should you remove the ground terminal screw, keep them in a safe place out of children’s reach, so there is no chance of them being swallowed accidentally.
- Always turn the phantom power off when connecting any device other than condenser microphones that require phantom power. You risk causing damage if you mistakenly supply phantom power to dynamic microphones, audio playback devices, or other devices that don’t require such power. Be sure to check the specifications of any microphone you intend to use by referring to the manual that came with it.
(This instrument’s phantom power:
48 V DC, 20 mA Max)

IMPORTANT NOTES

In addition to the items listed under “USING THE UNIT SAFELY” on page 3, please read and observe the following:

Power Supply

- Do not connect this unit to same electrical outlet that is being used by an electrical appliance that is controlled by an inverter (such as a refrigerator, washing machine, microwave oven, or air conditioner), or that contains a motor. Depending on the way in which the electrical appliance is used, power supply noise may cause this unit to malfunction or may produce audible noise. If it is not practical to use a separate electrical outlet, connect a power supply noise filter between this unit and the electrical outlet.
- The AC adaptor will begin to generate heat after long hours of consecutive use. This is normal, and is not a cause for concern.
- Before connecting this unit to other devices, turn off the power to all units. This will help prevent malfunctions and/or damage to speakers or other devices.

Placement

- Using the unit near power amplifiers (or other equipment containing large power transformers) may induce hum. To alleviate the problem, change the orientation of this unit; or move it farther away from the source of interference.
- This device may interfere with radio and television reception. Do not use this device in the vicinity of such receivers.
- Noise may be produced if wireless communications devices, such as cell phones, are operated in the vicinity of this unit. Such noise could occur when receiving or initiating a call, or while conversing. Should you experience such problems, you should relocate such wireless devices so they are at a greater distance from this unit, or switch them off.

- When moved from one location to another where the temperature and/or humidity is very different, water droplets (condensation) may form inside the unit. Damage or malfunction may result if you attempt to use the unit in this condition. Therefore, before using the unit, you must allow it to stand for several hours, until the condensation has completely evaporated.

Maintenance

- For everyday cleaning wipe the unit with a soft, dry cloth or one that has been slightly dampened with water. To remove stubborn dirt, use a cloth impregnated with a mild, non-abrasive detergent. Afterwards, be sure to wipe the unit thoroughly with a soft, dry cloth.
- Never use benzine, thinners, alcohol or solvents of any kind, to avoid the possibility of discoloration and/or deformation.

Additional Precautions

- Use a reasonable amount of care when using the unit's buttons, sliders, or other controls; and when using its jacks and connectors. Rough handling can lead to malfunctions.
- When connecting / disconnecting all cables, grasp the connector itself—never pull on the cable. This way you will avoid causing shorts, or damage to the cable's internal elements.
- A small amount of heat will radiate from the unit during normal operation.
- To avoid disturbing your neighbors, try to keep the unit's volume at reasonable levels. You may prefer to use headphones, so you do not need to be concerned about those around you (especially when it is late at night).

- When you need to transport the unit, package it in the box (including padding) that it came in, if possible. Otherwise, you will need to use equivalent packaging materials.
- Use a cable from Roland to make the connection. If using some other make of connection cable, please note the following precautions.
 - Some connection cables contain resistors. Do not use cables that incorporate resistors for connecting to this unit. The use of such cables can cause the sound level to be extremely low, or impossible to hear. For information on cable specifications, contact the manufacturer of the cable.

Handling CD-ROMs

- Avoid touching or scratching the shiny underside (encoded surface) of the disc. Damaged or dirty CD-ROM discs may not be read properly. Keep your discs clean using a commercially available CD cleaner.

Copyright

- Unauthorized recording, distribution, sale, lending, public performance, broadcasting, or the like, in whole or in part, of a work (musical composition, video, broadcast, public performance, or the like) whose copyright is held by a third party is prohibited by law.
- When exchanging audio signals through a digital connection with an external instrument, this unit can perform recording without being subject to the restrictions of the Serial Copy Management System (SCMS). This is because the unit is intended solely for musical production, and is designed not to be subject to restrictions as long as it is used to record works (such as your own compositions) that do not infringe on the copyrights of others. (SCMS is a feature that prohibits second-generation and later copying through a digital connection. It is built into MD recorders and other consumer digital-audio equipment as a copyright-protection feature.)
- Do not use this unit for purposes that could infringe on a copyright held by a third party. We assume no responsibility whatsoever with regard to any infringements of third-party copyrights arising through your use of this unit.

* Microsoft and Windows are registered trademarks of Microsoft Corporation.

* The screen shots in this document are used in compliance with the guidelines of the Microsoft Corporation.

* Windows® is known officially as: “Microsoft® Windows® operating system.”

* Apple and Macintosh are registered trademarks of Apple Computer, Inc.

* Mac OS is a trademark of Apple Computer, Inc.

* All product names mentioned in this document are trademarks or registered trademarks of their respective owners.

Contents

Contents of the package	8
Front and rear panel	10
Front panel	10
Rear panel	14
Before you begin using the FA-66 with your Macintosh (Mac OS X users)	18
Audio and MIDI settings	19
Software settings	23
Installing the driver (Windows)	24
Giving priority to background services	29
Driver settings	30
Basic connections and settings	35
Basic connections	35
Recording a mic or guitar	36
Recording a digital signal	38
Connecting various types of equipment	39
Software settings	40
SONAR 4	40
Digital Performer	43
Logic	44
Cubase SX/SL	45
FA-66 Driver Settings dialog box (Windows)	46
Troubleshooting	48
Driver-related problems (Windows)	48
No sound	51
Noise or pops are heard when recording/playing on your computer	55
Noise or distortion occurs when the FA-66 is not connected to your computer	59
The sound is too weak	59
Others	61
Main specifications	62
Index	64

Contents of the package

■ FA-66



■ AC adaptor

This is the dedicated AC adaptor for the FA-66. Use only the supplied AC adaptor.

■ FireWire (IEEE 1394) cables

(one 6-pin ↔ 6-pin cable, one 6-pin ↔ 4-pin cable)

Use one of these cables to connect the FA-66 to the IEEE 1394 connector (FireWire connector, iLink connector, DV connector) of your computer.



The 6-pin ↔ 4-pin cable cannot supply bus power.

* Use only the FireWire (IEEE 1394) cables. If the supplied FireWire (IEEE 1394) cable becomes damaged or lost and you need a replacement, please contact the nearest Roland Service Center, or an authorized Roland distributor, as listed on the "Information" page.

■ Owner's manual

This is the manual you are reading. Please keep it at hand for reference.

■ CD-ROM

This contains Windows drivers for the FA-66 and demo songs.

* Be careful not to touch or scratch the recorded surface (unprinted surface) of the disc. Doing so may render the disc unreadable. If the disc gets dirty, use a commercially available CD cleaner to clean it.



CAUTION

Do not play back the CD-ROM in a conventional audio CD player. Doing so may produce high-volume sound that can damage your hearing and/or speakers.



You will need to provide these items yourself

An external amp, speakers, headphones, and mic are not included

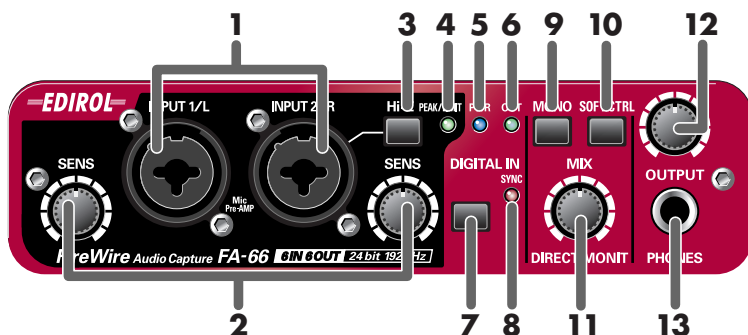
The external amp, speakers, or headphones you'll need to hear the sound output from the FA-66 and the cables you'll need to connect these items are not included. Nor is a mic included, which you will need to connect to the FA-66 in order to input audio. You will need to obtain these items yourself.

An MD or DAT recorder and digital input/output cables are not included

You can use an MD or DAT digital recorder to record, but the cables needed to connect these devices to the FA-66 are not included. You will need to obtain these items yourself.

Front and rear panel

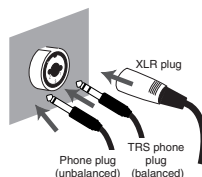
Front panel



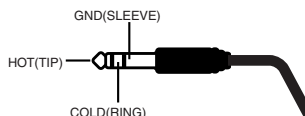
1. Combo input jacks

These are analog audio input jacks with mic preamps. They accommodate either XLR or phone plugs, allowing you to connect a variety of equipment. Either balanced or unbalanced signals may be connected.

Phantom power (48 V) is provided for XLR type connections, allowing you to connect condenser mics that require phantom power. In this case, turn on the **phantom power switch (19)** located on the rear panel.



** This instrument is equipped with balanced (XLR/TRS) type input jacks. Wiring diagrams for these jacks are shown on the right. Make connections after first checking the wiring diagrams of other equipment you intend to connect.*



2. Input sensitivity knobs

These adjust the input level of the signals input to the front panel **combo input jacks (1)**.



3. Input impedance select switch

This switch selects either high impedance (Hi-Z) or low impedance (Lo-Z) as the type of device connected to the **INPUT 2** phone jack of the **combo input jacks (1)**. If you have connected a guitar or bass to this jack, select the high impedance (Hi-Z) setting; if you have connected a mic, select the low impedance (Lo-Z) setting.

** Combo input jack INPUT 1 is fixed at low impedance (Lo-Z).*

4. Peak/Limiter indicator

This indicates whether the signal being input via the **combo input jacks (1)** is distorting, or whether the limiter is operating.

Limiter switch	Status
Limiter on 	The indicator will function as a limiter indicator. When the input signal exceeds a certain level, the limiter will operate and the indicator will light green.
Limiter off 	The indicator will function as a peak indicator. Use the input sensitivity knobs for each input jack to adjust the input level so that the peak indicator does not light red. The red LED will light if the sound distorts.

5. Power indicator

Lights when the power is on.

6. Output indicator

This will light green if signals are being sent from the computer’s audio output ports 1 and 2 (OUT 1/2).
(see block diagram → front cover)

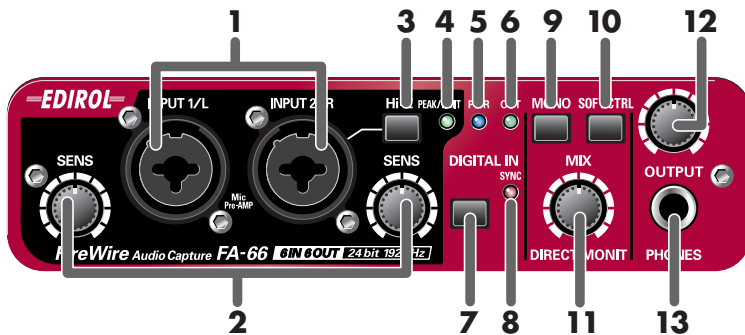
7. Digital input switch

If you want to record a digital input, turn this on (I pressed inward). This lets the FA-66 synchronize to an external digital device connected to the **digital input connector (25)**

8. Sync indicator

When the **digital input switch (7)** is on, this indicator shows the status of synchronization with a digital device connected to the **digital input connector (25)**. (external synchronization mode)

Lit	Synchronized correctly.
Blinking	Not synchronized. Check that your digital device is correctly connected to the digital input connector. Also make sure that the connected digital device is set to the same sampling frequency as that selected by the FA-66’s sample rate select switch (18) .



9. STEREO/MONO select switch (direct monitor section)

This selects whether the input signal is to be monitored in stereo (STEREO) or in monaural (MONO). Turn this on (⏏ pressed inward) if you want to monitor in monaural.

For example, if you've connected a guitar only to INPUT 2/R, you would use the monaural setting (⏏ inward position). Even with the monaural (MONO) setting, the audio signal being sent via FireWire (IEEE 1394) to the computer will be stereo.

10. Direct monitor soft control switch (direct monitor mixer section)

Turn this on (⏏ pressed inward) if you want to control the direct monitor mixer (see block diagram → front cover) from your ASIO 2.0 compatible software. If this is on, your software will be able to control the monitor volume, pan, and on/off status of each input jack.

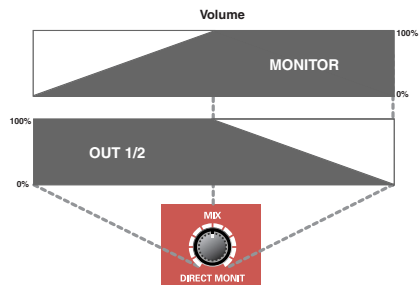
If this is off, all settings of the direct monitor mixer will be ignored (= bypassed), allowing you to monitor the input signals from all input jacks. This is convenient if you want to check the connections while temporarily ignoring the software settings.

* This function is available only on Windows.

11. Direct monitor volume (direct monitor section)

This adjusts the monitor volume.

Turning this knob toward the left (OUT1/2) will decrease the level of the sound being input through the input jacks. Turning the knob toward the right (MONITOR) will decrease the level of the sound being output from your computer. At the center position, the sound being output from your computer and the sound being input via the input jacks will both be at 100% of their level.



12. Output volume

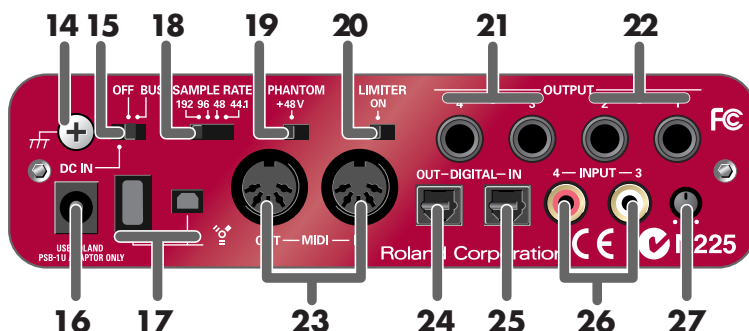
This adjusts the volume that is output from the **headphone jack (13)** and **Main output jacks (22)**.

13. Headphone jack

This jack outputs the mixed sound being input via the input jacks and the sound being output from the computer (WAVE OUT 1/2 (in the case of WDM, EDIROL FA-66 Out 1→ see p. 31)). The balance of these two is adjusted by the **direct monitor volume (11)**.

Even if headphones are connected, the sound being sent from the rear panel's **main output jacks (MAIN OUT) (22)** will not be cut off.

Rear panel



14. Grounding terminal

Depending on the circumstances of a particular setup, you may experience a discomforting sensation, or perceive that the surface feels gritty to the touch when you touch this device, or microphones connected to it, or the metal portions of other objects, such as guitars. This is due to an infinitesimal electrical charge, which is absolutely harmless. However, if you are concerned about this, connect the ground terminal (see figure) with an external ground. When the unit is grounded, a slight hum may occur, depending on the particulars of your installation. If you are unsure of the connection method, contact the nearest Roland Service Center, or an authorized Roland distributor, as listed on the “Information” page.

Unsuitable places for connection

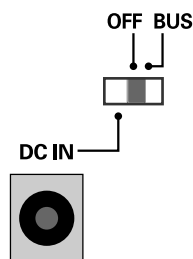
- Water pipes (may result in shock or electrocution)
- Gas pipes (may result in fire or explosion)
- Telephone-line ground or lightning rod (may be dangerous in the event of lightning)

15. Power switch

Used to switch the power on (DC IN) or off (OFF), and for switching to bus power (BUS).

BUS

The FA-66 can operate on bus power if it's connected to your computer via a 6-pin ↔ 6-pin FireWire (IEEE 1394) cable. In this case, power is supplied from your computer via the FireWire (IEEE 1394) cable. If you want to use bus power, set the power switch to the BUS position.



• 6-pin type

You can use bus power if your computer has a 6-pin IEEE 1394 connector (FireWire connector, iLink connector, DV connector).

* With some computers, the FA-66 may not operate on bus power. If so, connect the included AC adaptor to an AC outlet and use it to supply power to the FA-66. In this case, the power will be on when you set the power switch to the DC IN position.

• 4-pin type

If your computer has a 4-pin FireWire (IEEE 1394) connector, you cannot use bus power. Connect the included AC adaptor to the AC adaptor jack, and set the power switch to DC IN.



16. AC adaptor jack

Connect the included AC adaptor to this jack.

* *Never use any AC adaptor other than the supplied unit; doing so may cause malfunction.*

17. FireWire (IEEE 1394) connectors

Use a FireWire (IEEE 1394) cable to connect these to your computer.

We recommend that you use a 6-pin cable to connect the FA-66 to your computer, and a 4-pin cable to connect the FA-66 to any peripheral device you may be using.

• 6-pin connector

If the IEEE 1394 connector (FireWire connector, iLink connector, DV connector) of your computer is a 6-pin type, use the included 6-pin ↔ 6-pin cable.

The FA-66 will be able to operate on bus power. Normally you should use this method of connection.



If the IEEE 1394 connector (FireWire connector, iLink connector, DV connector) of your computer is a 4-pin type, use the included 6-pin ↔ 4-pin cable. However, in this case, the FA-66 will not operate on bus power.

• 4-pin connector

Normally, the 4-pin connector is used when connecting the FA-66 to a peripheral device.



18. Sample rate select switch

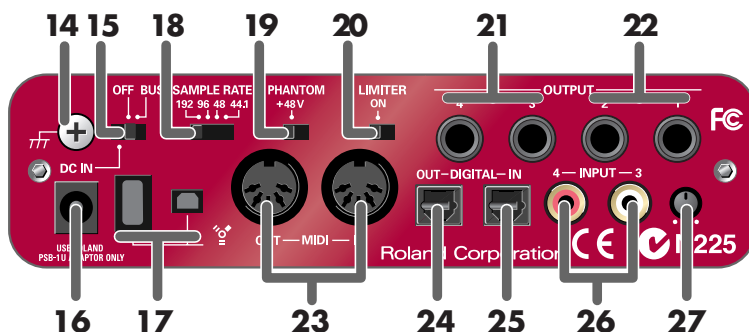
This specifies the sampling frequency at which audio data will be recorded and played back. In order to get this setting to take effect, you must exit all of your software, then cycle the power to the FA-66 (switch it off, then back on again).

* *If you are using Macintosh and want to change the sampling frequency, you must first power down the FA-66. Then, access the Mac OS **System Preferences - Sound**, and verify that **EDIROL FA-66** has disappeared from the **Input and Output** panes. Then, power up the FA-66 again. For information on how to display the Mac OS System Preferences - Sound, refer to “**Audio settings**” (p. 19).*

You must set the **sample rate select switch** to match the sampling frequency selected in the software you are using. If you use external synchronization mode (i.e., the DIGITAL IN switch turned on), the external device's sampling frequency must also be the same.

[Limitations when using the FA-66 at 192 kHz]

- You will not be able to use the digital input connector or digital output connector.



19. Phantom power switch

This is an on/off switch for the phantom power supplied to the XLR connectors of the **combo input jacks (1)** on the front panel.

* *You must leave the phantom power turned off (right position) unless condenser mics requiring phantom power are connected to the XLR jacks. Supplying phantom power to a dynamic mic or an audio playback device may cause malfunction. For details on the requirements of your mic, refer to its owner's manual.*

(The FA-66's phantom power supply: DC 48 V, 20 mA maximum)

20. Limiter switch

This turns the FA-66's hardware limiter on/off.

If a sudden, high-volume sound is input to the **combo input jacks (1)**, the limiter applies mild compression to prevent clipping from occurring at the AD converter.

* *Clipping noise will be heard if the input signal exceeds the capacity of the limiter.*

21. Output jacks 3, 4 (Nominal output: +4 dBu)

These jacks output analog audio signals. Balanced output is supported.

22. Main output jacks (output jacks 1, 2) (Nominal output: +4 dBu)

These output the mixed sound that is being input via the input jacks and being output from the computer. You can use the **output volume control (12)** to adjust the volume.

23. MIDI IN/OUT connectors

You can connect these to the MIDI connectors of your MIDI equipment to send and receive MIDI messages.

24. Digital output connector (optical)

Use this when you want to digitally connect an audio device, such as an MD or DAT unit.

The signals sent from **OUTPUT 5** and **6** (if using WDM, EDIROL FA-66 OUT 3 → see p. 31) are output to the **digital output connector**.

25. Digital input connector (optical)

Use this when you want to input a digital audio signal from a CD/MD/DAT or similar device.

The signal input to the **digital input connector** is input as **INPUT 5 and 6** (in the case of WDM, EDIROL FA-66 In 3 → see p. 31).

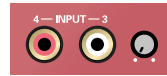
If you want to record this digital input signal, turn on the **digital input switch (7)**.

You must input a signal of the same sampling frequency as that selected by the **sample rate select switch (18)**.

26. Input jacks 3-4

Input jacks 3 and 4 are designed with a higher gain so that you can connect them to audio devices that have a lower output level, such as CD players or MIDI sound modules. If you connect these inputs to a device that has a higher output level, such as a mixer, use this **input level adjustment knob (27)** to adjust the level.

If no device is connected to the **Input jacks 3 and 4**, turn the **input level adjustment knob (27)** all the way toward the left.



27. Input level adjustment knob

This adjusts the level of the sound that is input at **input jacks 3 and 4 (26)**.

Before you begin using the FA-66 with your Macintosh (Mac OS X users)

If you are using the FA-66 with Windows, please read “**Installing the driver (Windows)**” (p. 24).

If you’re using the FA-66 with Mac OS X, you don’t need to install a driver.

Simply connect the FA-66 to your Macintosh as described below.

- 1** With the FA-66 disconnected, start up your Macintosh.
- 2** Use a FireWire (IEEE 1394) cable to connect the FA-66 to your Macintosh.
 - 1.** With the FA-66’s power switch off, connect the power cord to it.
 - 2.** Plug the AC adaptor cable into an AC outlet.
 - 3.** Use a FireWire (IEEE 1394) cable to connect the FA-66 to your Macintosh.
- 3** Turn on the FA-66’s **power switch**.

The driver will be installed automatically.

Next, you need to make audio device and MIDI device settings.



Once the connections have been completed, turn on power to your various devices in the order specified. By turning on devices in the wrong order, you risk causing malfunction and/or damage to speakers and other devices.



This unit is equipped with a protection circuit. A brief interval (a few seconds) after power up is required before the unit will operate normally.



Once the connections have been completed, turn on power to your various devices in the order specified. By turning on devices in the wrong order, you risk causing malfunction and/or damage to speakers and other devices.

Audio and MIDI settings

Audio settings

If you want to use the FA-66 with the iTunes software included with your Macintosh, specify the input/output devices as follows.

The procedure for making device settings differs depending on the software you are using. For details, refer to the owner's manual for your software.

- 1** From the **Apple** menu, choose the **System Preferences** dialog box, and click **Sound**.
- 2** Click the **Sound Effects** tab, and choose **EDIROL FA-66** for the “**Play alerts and sound effects through**” setting.
- 3** Click the **Output** tab, and choose **EDIROL FA-66** for the “**Choose a device for sound output**” setting.
- 4** If the **Input** tab is shown, choose **EDIROL FA-66** for the “**Choose a device for sound output**” setting.



If you want sound to be played from the internal speakers of your Macintosh, choose “**Internal speakers**” in the **Output** tab. If you don't want alerts to be played through the FA-66, choose “**Internal speakers**” for the “**Play alerts and sound effects through**” setting.

Cautions for use

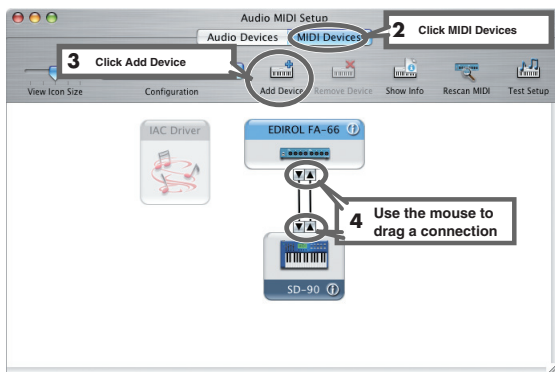
Before you use your software with the FA-66, please note the following.

- Before you start up your software, use a FireWire (IEEE 1394) cable to connect the FA-66 with your computer, and turn on the power.
- Do not disconnect the FA-66's FireWire (IEEE 1394) cable or switch off the power to the FA-66 while your software is running.
- Close your software before you switch off the FA-66's power.
- Turn off the Sleep setting of your Macintosh.
- The FA-66 will not work in the Classic environment of Mac OS X. Use it when the Classic environment is not running.
- Turn off the energy conservation settings of your Macintosh.
- If the Options pane of the **Energy Saver** preferences on your Macintosh has a **Processor Performance** setting, choose the “**Highest**” setting.

- * Depending on the model of Macintosh you are using, starting up the Macintosh when the FA-66 is connected may cause operation to become unstable. In this case, start up the Macintosh and then connect the FA-66.*
- * If you want to change the FA-66's sample rate, turn the FA-66 off, change the sample rate, and then turn the FA-66 on again. If, in the Mac OS System Preferences - Sound - Output, the EDIROL FA-66 is not shown in the "Choose a device for sound output" setting, this means that the FA-66 is completely powered down.*

MIDI settings

- 1 Open the **Applications** folder of your Macintosh hard disk. In the **Utilities** folder, double-click **Audio MIDI Setup** to open the **Audio MIDI Setup**.



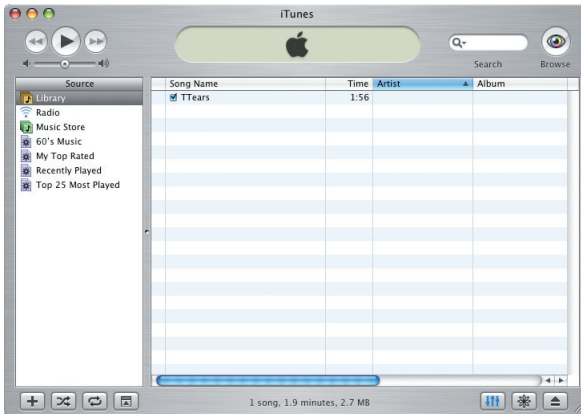
- 2 Click the **MIDI Devices** tab.
- 3 Click **Add Device**.
New external device will appear.
- 4 Connect the **t** and **s** symbols (which signify the outputs and inputs) of the EDIROL FA-66 icon to those of the New External Device icon by using the mouse to drag between them.
** Change icons and set other items according to the MIDI devices that are connected to the FA-66's MIDI connectors. If you double-click new external device, the new external device Properties dialog box will appear, allowing you to specify a variety of things, such as the device name.*
- 5 Close the **Audio MIDI Setup** dialog box to complete the procedure.


Checking that you hear sound

Now, let's play back the sample data to verify that the connections and settings are correct. We will use iTunes to play back the sample data provided on the included CD-ROM.

Before you continue, connect headphones or monitor speakers to the FA-66 as described in **"Basic connections"** (p. 35).

- 1 Set the FA-66's sample rate select switch to 48 kHz. You'll need to cycle the power to the FA-66 after changing the sampling rate.
- 2 Start up **iTunes** (included with Mac OS).
iTunes is normally located in the **Applications** folder on the hard disk.
- 3 Insert the included CD-ROM into the CD-ROM drive of your Macintosh.



- 4 From the **SampleSong** folder of the CD-ROM, drag **TTears(.mp3)** into the iTunes window.
- 5 Select **TTears(.mp3)** in the song list, and click  .
Alternatively, you can start playback by pressing the space bar on your computer keyboard.

If the sample data plays correctly, the FA-66 is correctly connected to your Macintosh.

NOTE

Use of the song data supplied with this product for any purpose other than private, personal enjoyment without the permission of the copyright holder is prohibited by law. Additionally, this data must not be copied, nor used in a secondary copyrighted work without the permission of the copyright holder.

MEMO

If the volume is too low, or if you don't hear sound at all, try turning the FA-66's **direct monitor volume knob** (p. 12) so it's positioned to the left of the MIX (center) position.

About the demo songs

The SampleSong folder on the included CD-ROM contains the following demo songs. Please copy the demo songs to the hard disk of your Macintosh before listening to them.

* *The demo songs were produced at 48 kHz. You must set the FA-66's sample rate to 48 kHz. You'll need to cycle the power to the FA-66 after changing the sampling rate.*

for Cubase folder

This folder contains the demo songs as Cubase VST song files (.all) and Cubase SX project files (.cpr).

If you are using the Cubase SX demo version, the playback will not be correct since some functionality (such as effects) will not be available.

for Logic folder

This folder contains the demo songs as Logic project files (.lso).

Software settings

Before you start up your software, use a FireWire (IEEE 1394) cable to connect the FA-66 to your computer, and turn on the power of the FA-66.

If your software allows you to specify MIDI and audio input/output settings, choose **EDIROL FA-66**. For details, refer to the owner's manual for your software. Also refer to "Software settings" (p. 40).

If you have turned on software monitoring in your application, turn the FA-66's hardware monitoring (direct monitor) off to prevent double monitoring and to keep an audio feedback loop from occurring.



For the latest information,
please visit
<http://www.edirol.com/>

Installing the driver (Windows)

What is a driver?

A driver is software that allows data to be transferred between the FA-66 and application software running on your computer when the FA-66 is connected to your computer via a FireWire (IEEE 1394) cable.

The driver sends data from your application software to the FA-66, and from the FA-66 to your application software. The driver is required in order for you to use the FA-66 while connected to your computer.

- 1 With the FA-66 disconnected, start up Windows.

* You must log on to Windows with a user name whose account has administrative privileges (e.g., Administrator).

- 2 Open the System Properties dialog box.

1. From the Windows **start** menu, choose **Control Panel**.
2. In “Pick a category,” click “**Performance and Maintenance**”.
3. In “or Pick a Control Panel icon,” click the **System** icon.

- 3 Click the Hardware tab, and then click [Driver Signing].

The **Driver Signing Options** dialog box appears.



- 4 In the **Driver Signing Options** dialog box, make sure that “**Ignore**” is selected.

If “**Ignore**” is selected, simply click [OK]. If “**Ignore**” is not selected, make a note of the current setting (Warn or Block), change the setting to “**Ignore**”, and click [OK].



Depending on your system, the **System** icon may be displayed directly in the **Control Panel** (Classic view). If so, double-click the System icon.

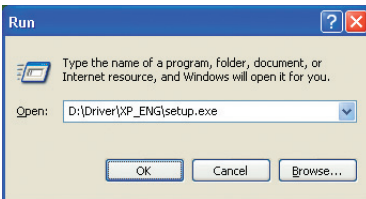


If you change the “**Driver Signing Options**” setting, change it back to the original setting after you’ve installed the driver.



If the screen indicates “**Windows can perform the same action each time you insert a disk or connect a device with this kind of file,**” click [Cancel].

- 5 Click **[OK]** to close the **System Properties** dialog box.
- 6 Close all currently running software (applications).
Also close all windows that are open. If you are using software such as antivirus programs, be sure to close these programs as well.
- 7 Find the included CD-ROM.
Insert the CD-ROM into your computer's CD-ROM drive.
- 8 From the Windows **start** menu, choose "**Run...**"
The "**Run**" dialog box will appear.
- 9 Input the name into the dialog box as shown, and click **[OK]**.




(Drive name): \Driver\XP_ENG\setup.exe

* The drive name is "D:" in the example shown here, but this may be different on your system. Specify the drive name for your CD-ROM drive.

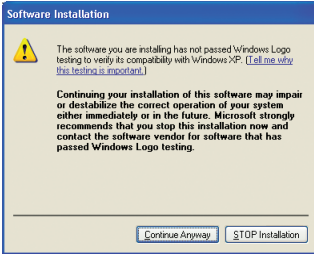
- 10 The **EDIROL FA-66 Driver Setup** dialog box appears.
Click **[Install]**.



Checking the name of your drive. From the start menu, choose **My Computer**. In the window that appears, verify the name of the CD-ROM drive into which you inserted the CD-ROM in step 7. The (D:) or (E:) displayed by the CD-ROM drive icon  is the drive name.



If you want to install the driver into a different hard disk, click **[Browse]** and specify the desired location.



If the setting in the **Driver Signing Options** dialog box is not set to “**Ignore**,” a dialog box like the following will appear. Click [**Continue Anyway**] to continue driver installation.

- 11** A dialog box entitled “**Setup is now ready to install the drivers**” appears.

Use a FireWire (IEEE 1394) cable to connect the FA-66 to your computer.

1. With the power switch turned off, connect the AC adaptor to the FA-66.
2. Plug the AC adaptor’s power cord into an AC outlet.
3. Use a FireWire (IEEE 1394) cable to connect the FA-66 to your computer.

- 12** Turn on the power switch of the FA-66.

The “**Found New Hardware**” message appears near the taskbar. Please wait.

- 13** A dialog box entitled **Welcome to the Found New Hardware Wizard** appears. Make sure that the box indicates “**EDIROL FA-66 Sub 1**,” choose “**Install the software automatically (Recommended)**,” and click [**Next**].

- 14** A dialog box entitled “**Completing the Found New Hardware Wizard**” appears.

Click [**Finish**].

Once again, the “**Found New Hardware**” message appears near the taskbar. Please wait.



Once the connections have been completed, turn on power to your various devices in the order specified. By turning on devices in the wrong order, you risk causing malfunction and/or damage to speakers and other devices.



This unit is equipped with a protection circuit. A brief interval (a few seconds) after power up is required before the unit will operate normally.



If the **Found New Hardware Wizard** asks you whether you want to connect to Windows Update, choose “**No**” and then click [**Next**].

- 15** A dialog box entitled **Welcome to the Found New Hardware Wizard** appears. Make sure that the box indicates “**EDIROL FA-66 Sub 2**,” choose “**Install the software automatically (Recommended)**,” and click **[Next]**.
- 16** A dialog box entitled “**Completing the Found New Hardware Wizard**” appears.
Click **[Finish]**.
The “**Found New Hardware**” message appears near the taskbar.
- 17** In the **EDIROL FA-66 Driver Setup** dialog box that is already displayed, click **[I Completed the Above Steps]**.
The “**Found New Hardware**” message appears near the taskbar.
- 18** The **Welcome to the Found New Hardware Wizard** dialog box appears. Make sure that the box indicates “**EDIROL FA-66**,” choose “**Install the software automatically (Recommended)**,” and click **[Next]**.

A dialog box like the following will appear if “**Driver Signing Options**” is not set to “Ignore.”

If a dialog box with the “!” symbol appears...

- 1.** Click **[Continue Anyway]**.
- 2.** Continue with the installation.

If a dialog box with the “X” symbol appears...

- 1.** Click **[OK]**.
- 2.** When the “**Found New Hardware Wizard**” appears, click **[Finish]**.
- 3.** Return to **step 1** (p. 24), and re-install the driver from the beginning.

- 19** A dialog box entitled “**Completing the Found New Hardware Wizard**” appears. Click **[Finish]**.
Once again, the “**Found New Hardware**” message appears near the taskbar.

This completes driver installation.

If you changed the “Driver Signing Options” setting (p. 24, step 4), restore the setting to its previous state after restarting Windows.

1. Log on to Windows using the same user account as the one used when the driver was installed.
2. From the Windows **start** menu, choose **Control Panel**.
3. In “**Pick a category**,” click **Performance and Maintenance**.
4. In “**or Pick a Control Panel icon**,” click the **System** icon. The **System Properties** dialog box appears.
** Depending on your system, the **System** icon may be shown directly in the **Control Panel** (Classic view). If so, double-click the **System** icon.*
5. Click the Hardware tab, and then click [**Driver Signing**]. The **Driver Signing Options** dialog box appears.
6. In **Driver Signing Options**, restore the previous setting (“Warn” or “Block”) and click [**OK**].
7. Click [**OK**]. The System Properties dialog box closes.

Next, you need to set your computer so priority is given to background services, which will help to assure that audio and MIDI processing occur smoothly.

(-> “**Giving priority to background services**” (p. 29))

Giving priority to background services

Crackling may occur in the sound if you omit making this setting. To ensure that audio and MIDI are processed smoothly, make the setting as follows.

- 1 ▶ Open the **System Properties** dialog box.
 1. From the Windows start menu, choose **Control Panel**.
 2. In “Pick a category,” click “**Performance and Maintenance**”.
 3. In “or Pick a Control Panel icon,” click the **System** icon.

- 2 ▶ Click the **Advanced** tab.

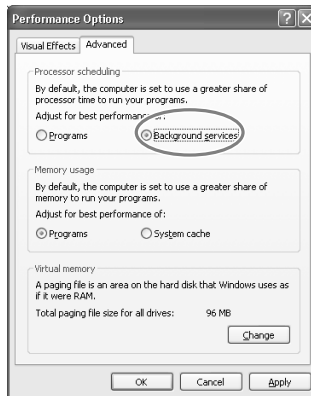
- 3 ▶ Click **[Settings]** located at the right of the **Performance** area.

The **Performance Options** dialog box appears.

- 4 ▶ Click the **Advanced** tab.

- 5 ▶ In **Processor Scheduling**, choose “**Background services**,” and click **[OK]**.

- 6 ▶ In the **System Properties** dialog box, click **[OK]**. The **System Properties** dialog box closes.



Next, you need to make audio device and MIDI device settings.

(-> “**Driver settings**” (p. 30))



Depending on your system, the System icon may be displayed directly in the **Control Panel** (Classic view). If so, double-click the **System** icon.

Driver settings

About the input and output devices

In order to get the best performance from the software you are using, you must choose the correct device settings. The FA-66’s audio driver supports WDM and ASIO 2.0.

Audio devices

Audio output device (WDM)	EDIROL FA-66 Out 1–3	Note 1
Audio input device (WDM)	EDIROL FA-66 In 1–3	Note 1
ASIO device	EDIROL FA-66	

Note 1: Refer to “How WDM ports correspond to FA-66 output jacks” (p. 31).

MIDI devices

MIDI OUT	EDIROL FA-66 MIDI OUT If you specify EDIROL FA-66 as the output port for your sequencer software, etc., messages will be sent from the FA-66’s MIDI OUT connector.
MIDI IN	EDIROL FA-66 MIDI IN If you specify EDIROL FA-66 as the input port for your sequencer software, etc., messages will be received from the FA-66’s MIDI IN connector.

- * For details on how to make settings for your software, you should also refer to the owner’s manual for your software, as well as to “**Software settings**” (p. 40).
- * If you are unable to select the FA-66 in the device settings of your software, it is possible that the FA-66 driver was not installed correctly. Please re-install the driver.

WDM

Use this if you are using the FA-66 with the following applications or situations.

- Conventional applications such as Media Player
(for the settings, refer to “**Input/output device settings**” (p. 32))
- WDM driver mode compatible applications such as SONAR
- DirectSound compatible applications

ASIO

Use this if you are using the FA-66 with an ASIO-compatible application such as Cubase. In the ASIO settings of your application, choose “EDIROL FA-66.” You will be able to use ten inputs and ten outputs.

** When using the FA-66 with ASIO, we recommend that you not set your application to use the Microsoft GS Wavetable SW Synth. (This will decrease the processing load, and make it easier to change the driver buffer size.)*

How WDM ports correspond to FA-66 output jacks

WDM output port		FA-66 output jacks	WDM input port		FA-66 input jacks
EDIROL FA-66 OUT 1	L R	OUTPUT jack 1 OUTPUT jack 2	EDIROL FA-66 IN 1	L R	INPUT jack 1 INPUT jack 2
EDIROL FA-66 OUT 2	L R	OUTPUT jack 3 OUTPUT jack 4	EDIROL FA-66 IN 2	L R	INPUT jack 3 INPUT jack 4
EDIROL FA-66 OUT 3 * This port is not displayed when operating at 192 kHz.		Digital output connector	EDIROL FA-66 IN 3 * This port is not displayed when operating at 192 kHz.		Digital input connector

If you have turned on software monitoring in your application, turn the FA-66’s hardware monitoring (direct monitor) off to prevent double monitoring and to keep an audio feedback loop from occurring.



Input/output device settings

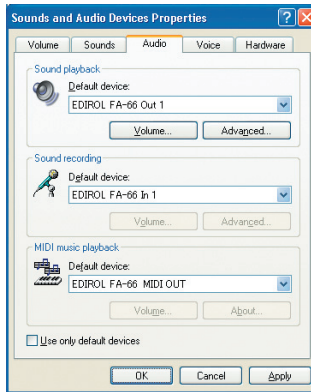
If you will be using the Windows Media Player application with the FA-66, specify the input/output devices as follows.

The method in which you make device settings will depend on the software you are using. For details, refer to the owner's manual for your software.

- 1 Open the **Sound, Speech, and Audio Devices Properties** dialog box.
 1. From the Windows **start** menu, choose **Control Panel**.
 2. In "Pick a category," click **Sound, Speech, and Audio Devices**.
 3. In "or Pick a Control Panel icon," click the **Sounds and Audio Devices** icon.

- 2 Click the **Audio** tab.

- 3 In the **Sound playback**, **Sound recording**, and **MIDI music playback** areas, click the **Default device** field. From the list that appears for each field, choose the device shown below.



Sound playback	EDIROL FA-66 Out 1
Sound recording	EDIROL FA-66 In 1
MIDI music playback	EDIROL FA-66 MIDI OUT

- 4 Click **[OK]** to close the **Sounds and Audio Devices Properties** dialog box.

This completes the audio and MIDI input/output settings.



Depending on your system, the **System** icon may be displayed directly in the **Control Panel** (Classic view). If so, double-click the **System** icon.



If you are using sequencer software, you will need to make audio and MIDI device settings from within your software. For details, refer to the owner's manual for the software you are using.



If you are using the 192 kHz sample rate on Windows XP, the FA-66 may not appear in the Sounds tab of the Sounds and Audio Devices Properties dialog box. If so, please update your system to Windows XP Service Pack 1.



Each input/output device can only be used by one software application at a time; multiclient usage is not supported.

Checking that you hear sound

Now, let's play back the sample data to verify that the connections and settings are correct. We will use standard Windows functionality to play back the sample data provided on the included CD-ROM.

Before you continue, connect headphones or monitor speakers to the FA-66 as described in **"Basic connections"** (p. 35).

- 1 Insert the CD-ROM into the CD-ROM drive of your computer.
- 2 From the **SampleSong** folder of the CD-ROM, drag **TTears(.mp3)** onto your desktop.
- 3 Set the FA-66's **sample rate select switch** to **48 kHz**.
You'll need to cycle the power to the FA-66 after changing the sampling rate.
- 4 Right-click the **TTears(.mp3)** file you copied, and choose **Play** from the menu that appears.
Playback begins.

If the sample data plays correctly, the FA-66 is correctly connected to your computer, and the driver has also been installed correctly.



Use of the song data supplied with this product for any purpose other than private, personal enjoyment without the permission of the copyright holder is prohibited by law. Additionally, this data must not be copied, nor used in a secondary copyrighted work without the permission of the copyright holder.



The contents of the menu that appears will depend on your system.



If the volume is too low, or if you don't hear sound at all, try turning the FA-66's **direct monitor volume knob** (p. 12) so it's positioned to the left of the MIX (center) position.

About the demo songs

The SampleSong folder on the included CD-ROM contains the following demo songs. Please copy the demo songs to the hard disk of your computer before listening to them.

* *The demo songs were produced at 48 kHz. You must set the FA-66's sample rate to 48 kHz. You'll need to cycle the power to the FA-66 after changing the sampling rate.*

for Cubase folder

This folder contains the demo songs as Cubase VST song files (.all) and Cubase SX project files (.cpr).

If you are using the Cubase SX demo version, the playback will not be correct since some functionality (such as effects) will not be available.

for SONAR folder

This folder contains the demo songs as SONAR project files (.cwb).

Software settings

Before you start up your software, use a FireWire (IEEE 1394) cable to connect the FA-66 to your computer, and turn on the power of the FA-66.

If your software allows you to specify MIDI and audio input/output settings, choose **EDIROL FA-66**. For details, refer to the owner's manual for your software. Also refer to “**Software settings**” (p. 40).

If you have turned on software monitoring in your application, turn the FA-66's hardware monitoring (direct monitor) off to prevent double monitoring and to keep an audio feedback loop from occurring.



For the latest information, please visit
<http://www.edirol.com/>

Basic connections and settings

This section explains basic connections and data flow for the FA-66.

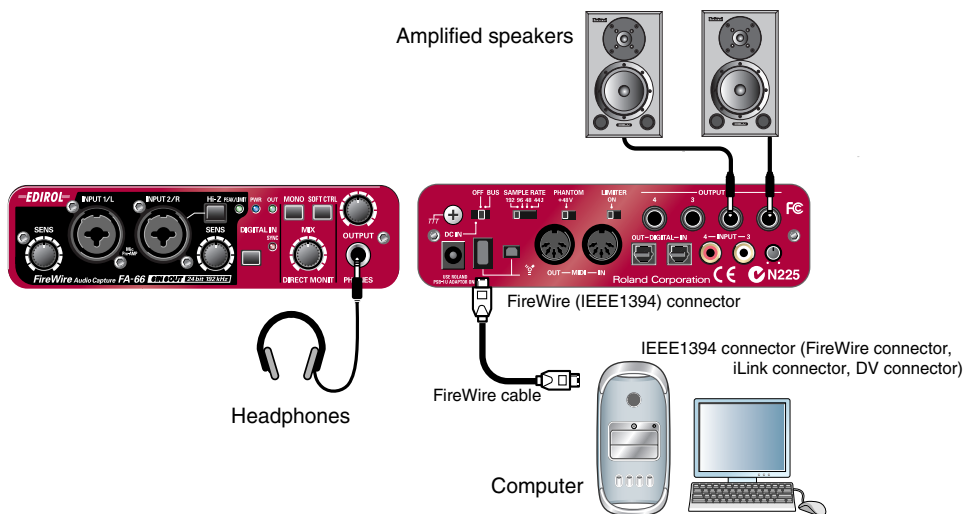
Refer to the block diagram printed on the front cover of the manual as you read this section.

- * *Before making connections to other equipment, turn down the volume of all your equipment and turn off the power to avoid causing malfunctions or damaging your speakers.*
- * *When connection cables with resistors are used, the volume level of equipment connected to the inputs (Input jacks) may be low. If this happens, use connection cables that do not contain resistors, such as those from the Roland PCS series.*

Basic connections

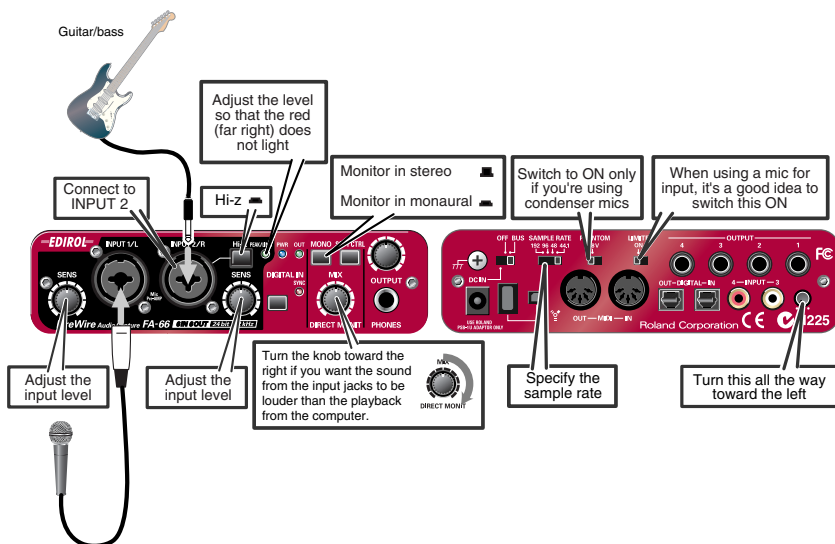
Use a FireWire (IEEE 1394) cable to connect the FA-66 to your computer. MIDI data and audio data are transferred in both directions via the FireWire (IEEE 1394) cable.

By connecting headphones or monitor speakers as shown in the diagram below, you can monitor the playback from your software or the sound from an instrument or audio device connected to the FA-66.



Recording a mic or guitar

Here's how to make connections and settings to let you sing or play your guitar while listening to audio data on your computer, and record just the vocal or guitar into your sequencer.



Connections

The sound of the mic connected to INPUT 1 will be recorded in your computer as the left (L) channel. If you connect a source to INPUT 2, it will be recorded on the right (R) channel.

Connect your guitar to INPUT 2.

Sample rate select switch

Set this to the same sample rate as selected in your recording software.

If you switch the FA-66's sample rate, you must turn the power of the FA-66 off, then on again to get the setting to take effect.

Input impedance select switch

If you've connected a mic to INPUT 2

Select Lo-Z.

If you've connected a guitar to INPUT 2

Select Hi-Z.

STEREO/MONO select switch (direct monitor section)

Set this according to whether you want to monitor the input signal in stereo or in monoaural.

Direct monitor soft control switch

Turn this on if you want to control input monitoring from ASIO 2.0 compatible software.

Direct monitor volume

This adjusts the balance between the monitor volume and the audio playback volume from your computer. Adjusting the direct monitor volume will not affect the recording level.

Phantom power switch

If you're using a condenser mic, turn the phantom power switch on.

** If a device that does not use phantom power is connected, you must turn off the phantom power switch. Failing to do so may cause malfunction.*

Input sensitivity knob

Use the input sensitivity knob to adjust the input level. For the best audio quality, raise the level until it is as high as you can get it without causing the input level indicator to light in red.

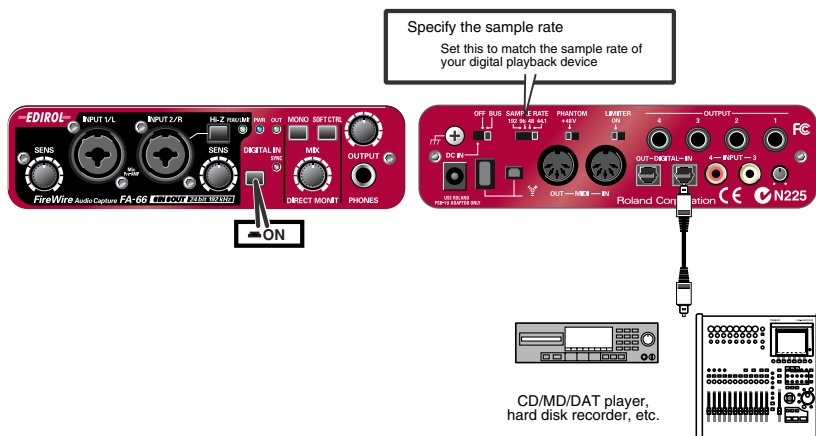
Other notes

Don't connect anything to jacks you are not using.

Howling could be produced depending on the location of microphones relative to speakers. This can be remedied by:

1. Changing the orientation of the microphone(s).
2. Relocating microphone(s) at a greater distance from speakers.
3. Lowering volume levels.

Recording a digital signal



Connections

Connect your digital device to the digital input connector.

Sample rate select switch

Set this to match the sample rate of your digital playback device and the sample rate of your recording software.

If you switch the FA-66's sample rate, you must turn the power of the FA-66 off, then on again to get the setting to take effect.



You cannot record digital signals if the 192 kHz setting is selected.

Digital input switch

Turn this on so that the FA-66 will synchronize to the digital signal being input to the digital input connector.

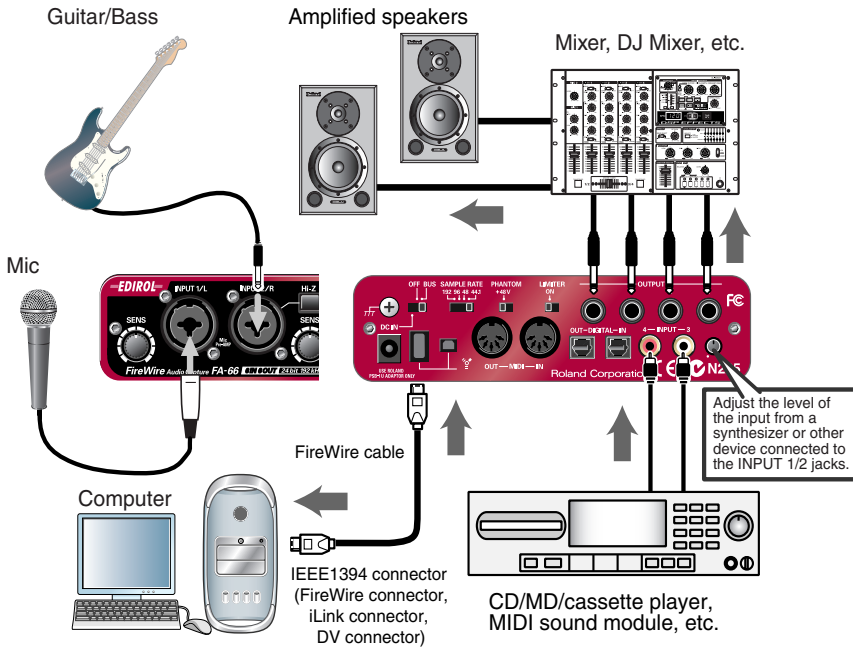
When synchronized correctly, the sync indicator will light green. If this indicator is blinking green, synchronization has not been achieved. In this case, check that the sample rate of the connected digital device matches the sample rate selected by the FA-66's sample rate switch.

Direct monitor volume

This adjusts the monitor volume.

Adjusting the direct monitor volume will not affect the recording level.

Connecting various types of equipment



Connections

Connect output jacks 1-4 to your external mixer or other device.

Direct monitor volume

This adjusts the monitor volume.

Adjusting the direct monitor volume will not affect the recording level.

Software settings

You will need to make audio and MIDI device settings for the software you're using. Here are some examples for typical software applications.

SONAR 4

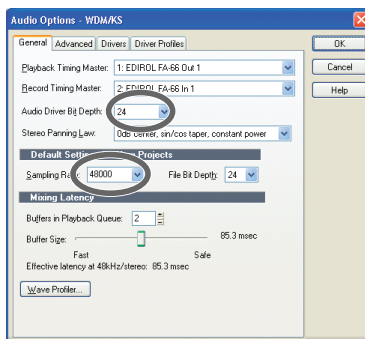
In this example we are using SONAR 4 Producer Edition.



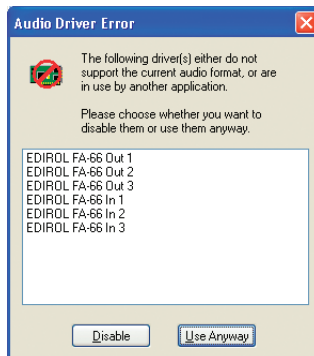
You must make the following settings if you have switched the FA-66's sample rate or have changed the buffer size in the FA-66 Driver settings dialog box.

1. Power up the FA-66, and then start up SONAR.
2. From SONAR's **Options** menu, choose **Audio** to open the **Audio Options** dialog box.
3. Click the **Advanced** tab.
In the **Playback and Recording** area, verify that **Driver Mode** is set to **WDM/KS**.
** If you change this setting, click [OK] and restart SONAR.
Restart SONAR, and from the **Options** menu, choose **Audio** to open the **Audio Options** dialog box.*
4. In the **General** tab, set **Audio Driver Bit Depth**

to **24**.
Set the **Sampling Rate** to the same setting as the FA-66's sample rate select switch.
If you change this setting, click [OK] and exit SONAR.



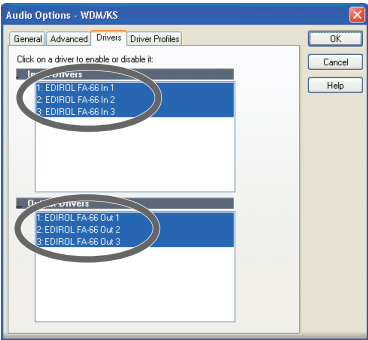
- * If the **Audio Driver Error** dialog box appears, click [Use Anyway]. If you click [Disable], the setting will be discarded.*



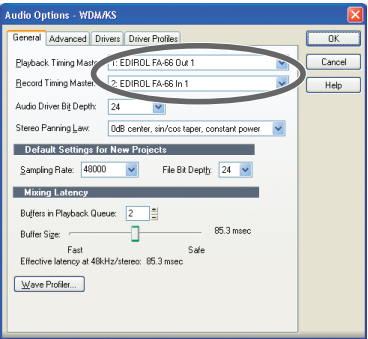
- 5. Restart SONAR, and from SONAR’s **Options** menu, choose **Audio** to open the **Audio Options** dialog box.
- 6. In the **General** tab, click **Wave Profiler**.
When **Wave Profiler** is finished, click **[Close]**.
- 7. Click the **Drivers** tab.

In the lists of **Input Drivers** and **Output Drivers**, click the following devices to highlight them (white characters on blue background), and un-highlight all other devices. Click **[OK]**.

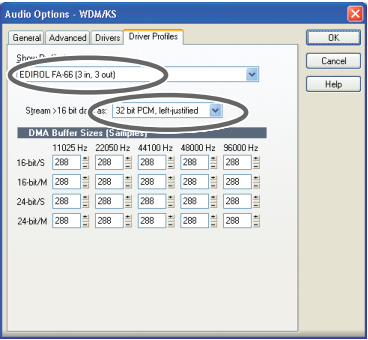
Input devices	Output devices
EDIROL FA-66 In 1	EDIROL FA-66 Out 1
EDIROL FA-66 In 2	EDIROL FA-66 Out 2
EDIROL FA-66 In 3	EDIROL FA-66 Out 3



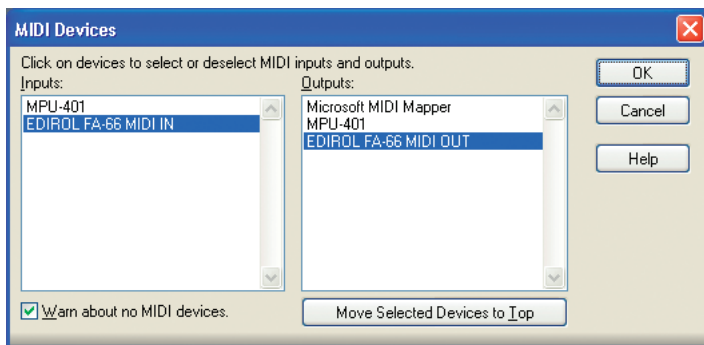
- 8. Restart SONAR, and from SONAR’s **Options** menu, choose **Audio** to open the **Audio Options** dialog box.
- 9. In the **General** tab, make sure that **Playback Timing Master** is set to **EDIROL FA-66 OUT**, and **Record Timing Master** is set to **EDIROL FA-66 IN**.



- 10. Click the **Driver Profiles** tab.
Select **EDIROL FA-66 (3 in, 3 out)** as the setting for “**Show Profile for,**” and then select “**32 bit PCM, left-justified**” as the setting for “**Stream > 16 bit data as.**”



11. Click **[OK]** to close the **Audio Options** dialog box.
12. From SONAR's **Options** menu, choose **MIDI Devices** to open the **MIDI Devices** dialog box.
13. In the **MIDI Devices** dialog box, choose the FA-66 in the **Inputs** area and the **Outputs** area.

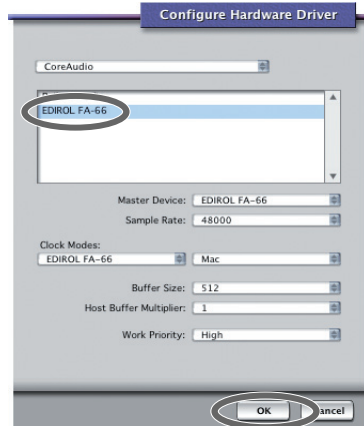


14. Restart SONAR.
15. Open the **Audio Options** dialog box once again as described in step 2. Verify that the audio device settings are correct.

Digital Performer

In this example we are using Digital Performer 4.5.

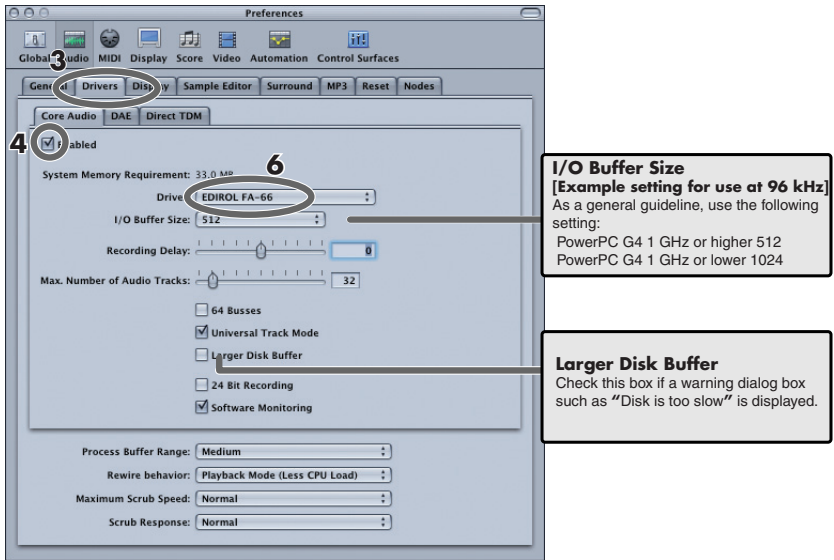
1. Power up the FA-66, and then start up Digital Performer.
2. From Digital Performer's **Setup** menu, choose **Audio System**, and verify that **MOTU Audio System** is checked.
3. From the **Setup** menu, choose **Configure Audio System - Configure Hardware Driver**.
The **Configure Hardware Driver** dialog box will appear.
4. In the list, click **EDIROL FA-66** to select it, and then click **[OK]**.



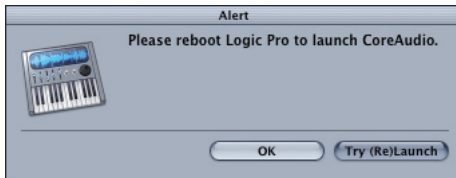
Logic

Here is an example using Logic Pro 7.0.1.

1. Power up the FA-66, and then start up Logic.
2. From the **Logic Pro** menu, choose **Preferences - Audio** to open the **Preferences** dialog box.
3. Click the **Drivers** tab.
4. In the **Core Audio** section, select (add a check mark to) the checkbox located at the left of Core Audio.



5. If a dialog box like the following appears, click **[Try (Re)Launch]**.

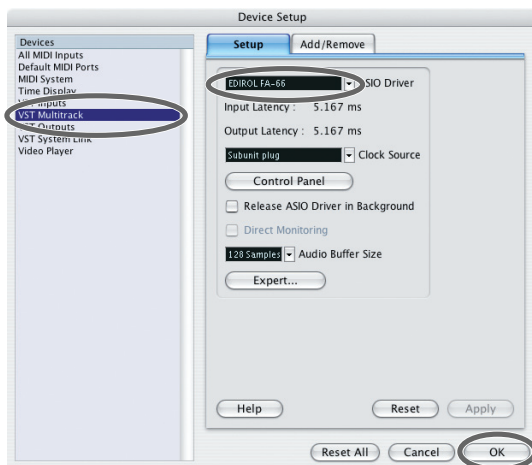


6. Set **Driver** to **EDIROL FA-66**.
7. Close the dialog box.
8. If the Alert dialog box appears, click **[Try (Re)Launch]**.

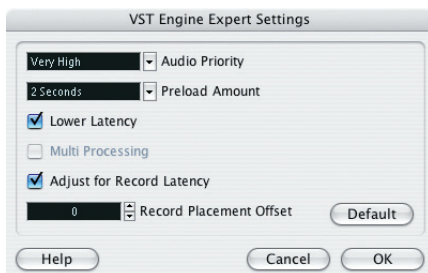
Cubase SX/SL

In this example we are using the Macintosh version of Cubase SX Version 2.2.

1. Power up the FA-66, and then start up Cubase.
2. From the **Devices** menu, choose **Device Setup** to open the **Device Setup** dialog box.
3. In the **Devices** list at the left side of the dialog box, choose **VST Multitrack**.
4. Select the **Setup** tab in the right side of the dialog box.
5. From the drop-down list for **ASIO Driver**, choose **EDIROL FA-66**.
6. Click **[OK]** to close the **Device Setup** dialog box.



If you experience clicks or pops in the sound, click **[Expert]** to open the **VST Engine Expert Settings** dialog box. Setting the **Audio Priority** to “**Very High**” may reduce clicks and pops.



FA-66 Driver Settings dialog box (Windows)



There is no FA-66 Driver Settings dialog box on Macintosh. Make settings from within your software.

You can adjust the audio latency by changing the FA-66 driver settings.

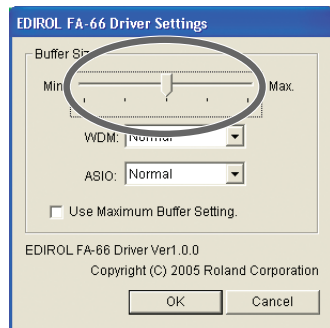
Decreasing the buffer size will shorten the latency.

Increasing the buffer size may eliminate problems such as clicks or pops in the sound.

** Latency is the time delay from when the software plays back audio data until sound is actual heard from an audio device such as the FA-66.*

Here's how to adjust the buffer size.

1. Close any software that is using the FA-66.
2. From the Windows **start** menu, choose **Control Panel**.
3. Click **"Switch to Classic View"** to select the **Classic view**.
Depending on your system, the Classic view may already be selected. If so, proceed to the next step.
4. In the **Control Panel**, double-click the **EDIROL FA-66** icon.
The **EDIROL FA-66 Driver settings** dialog box will appear.
5. Set **WDM** and **ASIO** to **Normal**.
6. Move the **Buffer Size** slider to the far left (Min).
If clicks or pops occur with the current setting, move the slider one step toward the right from its current value.
7. Click **[OK]** to close the dialog box.
8. Turn the power of the FA-66 off, then on again.
At this time, be sure to close all software before you turn the FA-66's power off.

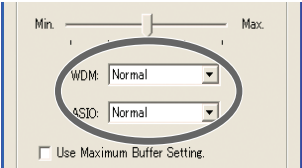


** If you power off the FA-66 while using your software, it may not operate correctly.*

9. Re-start the software that is using the FA-66.
If your software includes a function for testing audio devices, execute the test function after re-starting the software.
- * *Settings are not applied until you restart your software.*
10. Play back audio data on your software.
If you hear clicks or pops, close the software, and repeat steps 4-10 until you no longer hear clicks or pops.

This completes the basic settings.

If you are using WDM or ASIO compatible software, and you still experience clicks or pops in the sound even after making the above setting, or if you want to make the latency even shorter, you can change the settings from the pulldown menu.



WDM	
When using the FA-66 with the following software	
<ul style="list-style-type: none">• Conventional software such as Media Player• When using an application such as SONAR in WDM driver mode• When using DirectSound software	
Normal	normal size
Smaller	smaller buffer than Normal (shorter latency)

ASIO	
When using the FA-66 with ASIO-compatible software such as Cubase	
<ul style="list-style-type: none">• Conventional software such as Media Player• When using an application such as SONAR in WDM driver mode• When using DirectSound software	
Normal	normal size
Smaller	smaller buffer than Normal (shorter latency)
Larger	larger buffer than Normal (if clicks or pops occur)

If you still experience clicks or pops even though you have specified the largest buffer size, check **Use Maximum Buffer Setting**. If this item is checked, the slider and the settings of the WDM and ASIO items will be ignored, and an even larger buffer size will be used.

If you still experience clicks or pops even after doing this, the problem may lie elsewhere. Please refer to the Troubleshooting section.

* *Depending on your software, there may also be a buffer size and latency adjustment in the audio settings of your software. For details, refer to the owner's manual for your software.*

Troubleshooting

If you experience problems, read this chapter first/ It contains tips for solving most problems.

Driver-related problems (Windows)

Can't install the driver correctly

You attempted to install as described in “Installing the driver,” but did not succeed.

Install the FA-66 driver once again as described in “**Installing the driver (Windows)**” (p. 24). Also check the Device Manager to see whether “Other device,” “Unknown device,” “?”, “!,” or “x” is shown for any device. If you see such a device, delete it.

Does the Device Manager show “Other device,” “Unknown device,” or any device marked with “?”, “!,” or “x”?

If driver installation did not end successfully, the installed driver may remain in an incomplete state.

Install the FA-66 driver once again as described in “**Installing the driver (Windows)**” (p. 24).

Is the FA-66 connected correctly?

Make sure that you have used a FireWire (IEEE 1394) cable to correctly connect the FA-66 to the FireWire (IEEE 1394) connector of your computer.

Is the FA-66 powered up?

Make sure that the FA-66's power is on. Make sure that the POWER switch is on.

Could the FA-66's power switch be set to BUS?

Even if you normally use the FA-66 on bus power, you should connect the AC adaptor and set the power switch to the DC IN position while installing the driver (so that the power supply does not become unstable).

Could other FireWire (IEEE 1394) devices be connected?

When installing, all FireWire (IEEE 1394) devices other than the FA-66 should be disconnected from your computer.

If you have connected the FA-66 to an external FireWire (IEEE 1394) hard disk, please connect the FA-66 directly to an IEEE 1394 connector (FireWire connector, iLink connector, DV connector) on the computer itself.

Could other applications or resident software (such as an anti-virus program) be running?

Installation may not occur correctly if other programs are running. Be sure to close all other programs before installing.

Are you attempting to install from a networked CD-ROM drive?

You cannot install from a networked CD-ROM drive.

Could the CD-ROM or the lens of your CD-ROM drive be dirty?

If the CD-ROM or the lens of your CD-ROM drive are dirty, the installer may not work correctly. Use a commercially available CD cleaner or lens cleaner to clean the CD-ROM and/or lens.

Are the power conservation settings of your computer turned off?

If power conservation settings are turned on for your computer, disable these settings. (For details on how to disable them, refer to the owner's manual of your computer.)

Is there enough free space on your hard disk?

Delete unneeded files to increase the amount of free space.
After deleting the file(s), empty the recycling bin.

Is the FireWire (IEEE 1394) connector enabled on your computer?

Refer to the owner's manual for your computer, and verify that the FireWire (IEEE 1394) connector of your computer is enabled. The driver cannot be installed unless the FireWire (IEEE 1394) connector is enabled.

Does your computer or FireWire (IEEE 1394) repeater hub have a sufficient power supply?

If you are using bus power, the FA-66 cannot be connected if insufficient power is being supplied to it.

Check whether the following cases might apply.

- If you are using a notebook computer running on its battery, operation may be unstable with some computers. If this is the case, connect your computer to its AC adaptor.
- The power conservation mode of your computer may be limiting the power it supplies to the FireWire (IEEE 1394) connector. Re-examine the settings of your computer.
- The FA-66 cannot be used with some bus-powered repeater hubs (hubs that do not have their own power supply). Use a self-powered hub (a repeater hub that has its own power supply).

Does your computer meet the FireWire (IEEE 1394) specification?

Operation may be unstable if you are using a computer that does not electrically meet the FireWire (IEEE 1394) specification. If so, you may be able to solve the problem by connecting a FireWire (IEEE 1394) repeater hub that has its own power supply.

Can't install/uninstall the driver

Did you log onto Windows as a user with administrative privileges?

In order to install/uninstall/reinstall the FA-66 driver in Windows, you must log onto Windows as a user with administrative privileges, such as Administrator.

Did you make the “Driver Signing Options” setting?

You must set “Driver Signing Options” in order to install/reinstall the driver.
(p. 24)

Windows displays an “Installing Hardware,” “Did not find digital signature” dialog box.

Did you make the “Driver Signing Options” setting?

You must set “Driver Signing Options” in order to install/reinstall the driver.
(p. 24)

The “Welcome to the Found New Hardware Wizard” dialog box appears even though you installed the driver.

Did you connect the FA-66 to a different FireWire (IEEE 1394) connector than the one you used when installing the driver?

If your computer or FireWire (IEEE 1394) hub has two or more FireWire (IEEE 1394) connectors, and you connect the FA-66 to a FireWire (IEEE 1394) connector to which you have not previously connected it, this dialog box may appear even though you have already installed the driver. (This is not a malfunction.)

Install the FA-66 driver once again as described in “**Installing the driver (Windows)**” (p. 24).

No sound

Can't record or play back audio or MIDI

No sound

Are the volume controls of the FA-66 set appropriately?

Adjust the output volume knob and direct monitor volume of the FA-66's front panel.

Is your audio playback system (e.g., stereo) connected correctly?

Make sure that the FA-66's output jacks are correctly connected using audio cables to the input jacks of your audio playback system. For details on connections, refer to "Basic connections" (p. 35).

Did you connect/disconnect the FireWire (IEEE 1394) cable or cycle the power to the FA-66 while your software was running?

You must close all software that uses the FA-66 before powering off the FA-66. If you start up your computer with the FA-66 connected, operation may become unstable for some computers. In this case, connect the FA-66 after starting up your computer.

Could your computer have entered Standby (Suspend) or Sleep mode?

After your computer wakes up, close all software that had been using the FA-66, and then cycle the power to the FA-66.

Have you specified the audio and MIDI data output destination in the operating system?

Depending on the software you are using, you may need to specify the FA-66 as the audio data output destination for your computer. For details on this setting, refer to "Audio and MIDI settings" (p. 19) or "Driver settings" (p. 30).

Is the driver installed correctly?

If you're using Windows, you'll need to install a driver in order to play back audio/MIDI data via the FA-66. For details on installation and settings, refer to "Installing the driver (Windows)" (p. 24).

Are you running numerous software programs?

An error message may appear if numerous software programs are running simultaneously. If this occurs, close the software you are not using. In Windows, a program is still running if it remains in the taskbar even after you close its window; close any unneeded software shown in the taskbar.

Is the FA-66's sample rate set to a rate other than 192 kHz?

If the FA-66's sample rate select switch is set to 192 kHz, the digital output connector and the digital input connector are not available.

Are your input/output devices connected correctly?

In order to play back audio/MIDI using the FA-66, you must make the appropriate input/output device settings. For details on making these settings, refer to “**Audio and MIDI settings**” (p. 19) or “**Driver settings**” (p. 30).

If you are using the 192 kHz sample rate on Windows XP, the FA-66 may not appear in the Sounds tab of the Sounds and Audio Devices Properties dialog box. If so, please update your system to Windows XP Service Pack 1.

Could the FA-66 have been connected when you started up the computer?

Start up the computer with the FA-66 disconnected, and then connect the FA-66. Depending on the type of computer you are using, starting up the computer when the FA-66 is already connected may cause operation to be unstable. In this case, start up your computer and then connect the FA-66.

A device connected to the input jacks can't be heard through headphones

Are the input sensitivity knobs and direct monitor volume knob set appropriately?

Turn the knobs toward the right to adjust the volume.

Is the output volume knob raised appropriately?

Turn the knob toward the right to adjust the volume.

Sounds from the computer are not heard from the FA-66

Have you specified the audio data output destination in your playback software?

You need to make settings in your software to select the FA-66 as the destination for the output of audio data. For details on how to make this setting, refer to the owner's manual for the software you are using.

Could your computer have entered Standby (Suspend) mode or Sleep mode?

In this case, after your computer wakes up, close all software that had been using the FA-66, and then cycle the power to the FA-66.

If this does not solve the problem, close your software and then restart your computer.

We also recommend that you set your computer so that it does not enter Sleep mode.

Recording produces a silent file

Did you specify the correct audio data input source within the operating system?

Depending on the software you are using, you may need to specify the FA-66 as the audio data input source for your computer. For details on this setting, refer to “**Audio settings**” (p. 19) or “**Driver settings**” (p. 30).

Can't record from a digital connection

When capturing audio data from a CD or MD into your computer, is the digital input switch "on"?

Turn on the digital input switch.

Does the sample rate of your software match the sample rate of the digital audio device connected to the digital in connector?

Set the sample rate to the same setting.

If you switch the FA-66's sample rate, you must turn the power of the FA-66 off, then on again to get the setting to take effect.

Can't play/record 24-bit audio data

Does your software support 24-bit audio data?

You will need to use software that supports 24-bit audio data.

Is your software set to record/play 24-bit audio data?

Set your software to 24-bit.

Noise or pops are heard when recording/playing on your computer

Noise is heard during audio playback

Pops/clicks occur during audio playback

Noise is heard in the recorded sound

In Windows, did you make the setting described in “Giving priority to background services”?

In order to ensure that audio/MIDI processing occurs smoothly, make the setting described in “Giving priority to background services.”

(→ “Giving priority to background services” (p. 29))

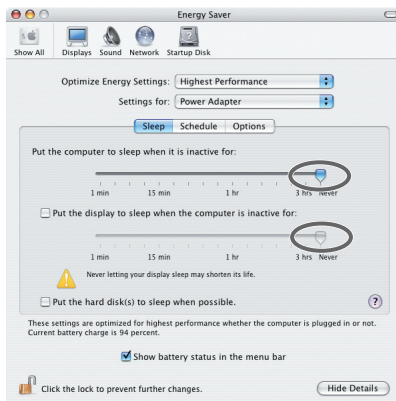
In Macintosh, check the Energy Saver settings.

In the Mac OS System Setup, set Energy Saver as follows.

Click the **Sleep** tab.

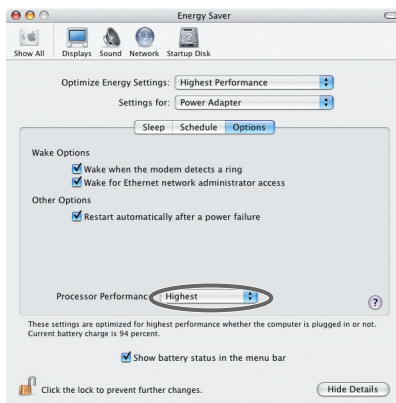
Set “**Put the computer to sleep when it is inactive for:**” to **Never**.

Set “**Put the display to sleep when the computer is inactive for:**” to **Never**.



Click the **Options** tab.

If there is a **Processor Performance** setting, set it to **Highest**.



In Windows, Power Management settings in the Control Panel may cause clicks or pops to occur in the audio playback.

The power management properties that appear when you double-click Power Management will differ depending on your computer system. The explanation that follows is for a typical situation, but you should refer to the owner's manual for your computer to verify these settings.

Some computers may not have the following items.

1. In the Windows **Control Panel**, double-click the **System** icon. The **System Properties** dialog box will appear.
2. Click the **Hardware** tab.
3. Click **Device Manager** to see the list of devices.
4. From the list, choose **Advanced Power Management Support**, and click **Properties**.
The **Advanced Power Management Support Properties** dialog box will appear.
5. Click the **Settings** tab, and in **Troubleshooting**, check the “**Don't Poll Power Supply Status**” check box. Then click [OK].
6. In the **System Properties** dialog box, click [OK].
7. Restart Windows.

Could two or more computers be connected to the FA-66 or to your mixer or audio devices?

Try connecting the FA-66 to only one computer. Check whether the noise disappears when the FA-66 is connected to only one computer. Connecting numerous audio devices to a computer may produce noise in some situations. If this occurs, connect only the FA-66 to your computer.

Are you using a FireWire (IEEE 1394) device in addition to the FA-66?

Try switching off FireWire (IEEE 1394) audio devices other than the FA-66. If you have connected the FA-66 to an external FireWire (IEEE 1394) hard disk, please connect the FA-66 directly to an IEEE 1394 connector (FireWire connector, iLink connector, DV connector) on the computer itself.

In Windows, you may be able to solve the problem by adjusting the buffer size in the FA-66 Driver Settings dialog box.

Adjust the buffer size as described in “**FA-66 Driver Settings dialog box (Windows)**” (p. 46).

After changing the buffer size, you must restart any software that uses the FA-66. If your software has an audio device test function, execute the test function.

Use the Windows Device Manager to disable the 1394 Net Adaptor.

1. In the Windows Control Panel, double-click the **System** icon. The **System Properties** dialog box will appear.
2. Click the **Hardware** tab.
3. Click **Device Manager** to see the list of devices.
4. In the list, double-click **Network Adapters**.
The **1394 Net Adaptor** will appear.
5. Double-click **1394 Net Adapter**.
The **1394 Net Adaptor Properties** dialog box will appear.
6. In **Device Usage**, choose “**Do not use this device (disable)**.”
7. Click **[OK]**.
8. Close the **Device Manager**.
9. In the **System Properties** dialog box, click **[OK]** to close the dialog box.

Are numerous software programs running?

Playback may be interrupted if numerous software programs are running at the same time, or when you start up another software program. Close any unneeded software, and try again. If this does not solve the problem, try restarting your computer.

Clicks or pops may occur in the sound if a LAN is operating.

Try disabling the LAN in the Device Manager. If this eliminates the clicks or pops, you may be able to solve the problem by updating your LAN driver or BIOS.

Is the sample rate setting in your software the same as the FA-66's sample rate select switch setting?

Set your software and the FA-66 to the same sample rate.

If you switch the FA-66's sample rate, you must turn the power of the FA-66 off, then on again to get the setting to take effect.

Try adding memory.

Adding memory will improve the processing capability of your computer. For details on how to add memory, refer to the owner's manual of your computer.

If you are using a Macintosh, try pressing the FA-66's digital input switch.

Even if you aren't making use of digital input/output, problems with noise and sound dropout can sometimes be alleviated by switching the FA-66's digital input switch on and off.

Did you start up your Macintosh before connecting the FA-66?

If you're using Mac OS, operation may become unstable if you first connected the FA-66 to your Macintosh via a FireWire (IEEE 1394) cable and then started up your Macintosh.

You must start up your Macintosh first, and then connect the FA-66.

Is the FA-66 connected to a FireWire (IEEE 1394) hub?

Try connecting the FA-66 directly to the FireWire (IEEE 1394) connector of your computer itself.

Noise may be entering via the line inputs or mic inputs.

If a MIDI sound module with a FireWire (IEEE 1394) connector is connected via FireWire (IEEE 1394) to the same computer as the FA-66, and the output of the MIDI sound module is connected to the input jacks of the FA-66, noise from the computer may be heard via the MIDI sound module from the FA-66. In this case, you can either connect the MIDI sound module and FA-66 in parallel via a self-powered hub, or connect the MIDI sound module in series or via a MIDI interface.

Playback/recording stops midway, and subsequent playback/recording is not possible

While you were using the FA-66, could your computer have performed a task with a heavy processing load, such as accessing a CD-ROM drive or network?

If a heavy processing load occurs while the FA-66 is being used, it may not work correctly. In this case, stop playback/recording, and then start playback/recording once again. If you are still unable to play/record correctly, close all software that had been using the FA-66, and re-connect the FA-66.

Digitally recorded sound has distortion, the wrong pitch, or contains noise

Is the sample rate setting in your software the same as the sample rate of the digital device connected to the digital input connector?

Set your software and the FA-66 to the same sample rate.

If you switch the FA-66's sample rate, you must turn the power of the FA-66 off, then on again to get the setting to take effect.

Noise or distortion occurs when the FA-66 is not connected to your computer

The sound is too weak

Noise is heard in the sound

Has a mic or guitar been left connected?

If a mic or guitar is connected to the FA-66, disconnect the mic or guitar and turn the input sensitivity knob all the way toward the left (lowering the input level).

Have you connected the grounding terminal?

Connecting the chassis of your computer or the grounding terminal of your computer's AC power cord to an electrical ground may solve the problem. Also, make sure that a device that produces a strong magnetic field, such as a television or microwave oven, is not located nearby.

Could numerous audio devices be connected?

Noise may occur if numerous audio devices are connected. Do not connect audio devices you are not using.

Sound is distorted

Is the output level indicator lit red?

If you are inputting sound via the combo input jacks, use the FA-66's input sensitivity knobs to lower the input level.

Sound of a device connected to the input jacks is distorted

Insufficient volume from a device connected to the audio input/output jacks

Is the input level appropriate?

If you are inputting audio via input jacks 3 and 4, use the FA-66's input level adjustment knob (rear panel) to adjust the input level. If you are inputting audio via the combo input jacks, use the input sensitivity knobs (front panel) to adjust the input level.

If you are inputting audio via the INPUT2 combo input jack, check the setting of the input impedance select switch.

Is the direct monitor volume set appropriately?

Adjust the volume as described in Direct Monitor Volume (p. 12).

A substantial amount of noise is present in the guitar sound

Does the noise decrease when you turn down the volume of your guitar?

If the noise decreases when you turn down the volume of your guitar, the guitar pickup may be affected by noise from your computer or display. Try locating the guitar as far away from the computer as possible.

Insufficient volume from your guitar

Are you using the correct jack?

Connect your guitar to the INPUT 2 combo input jack.

Is the input impedance select switch set correctly?

Set the input impedance select switch to Hi-Z.

Insufficient volume from a mic

Is the input level appropriate?

Turn the input sensitivity knob toward the right to adjust the input volume.

Others

Can't start the Cubase

The first time you use the FA-66 with Cubase, turn on the power with the FA-66's sample rate select switch at the 44.1 kHz position.

If this switch is not set to 44.1 kHz, it may be impossible to start Cubase.

Main specifications

● Number of Audio Record/Playback Channels

<44.1/48/96 kHz>

Record: 6 channels

Playback: 6 channels

(Full duplex)

<192 kHz>

Record: 4 channels

Playback: 4 channels

(Full duplex)

** Depending on the computer you are using, you may be unable to obtain sufficient performance.*

● Signal Processing

PC interface: 24 bits

AD/DA Conversion: 24 bits (linear)

● Sampling Frequency

Digital output: 44.1/48/96 kHz

Digital input: 44.1/48/96 kHz

AD/DA Conversion: 44.1/48/96/192 kHz

● Frequency Response

96.0 kHz: 20 Hz to 40 kHz (+0/-2 dB)

48.0 kHz: 20 Hz to 22 kHz (+0/-2 dB)

44.1 kHz: 20 Hz to 20 kHz (+0/-2 dB)

● Nominal Input Level

Input Jack 1-2 (XLR type): -50 to -10 dBu

Input Jack 1-2 (1/4 inch TRS phone type): -35 to +4 dBu

Input Jack 3-4: -10 dBu to +13 dBu (balanced)

● Nominal Output Level

Output Jack 1-4: +4 dBu (balanced)

● Residual Noise Level

(input terminated with 1 k ohms, MAIN VOLUME: 0 dB, INPUT SENS: +4 dBu, DIRECT MONITOR VOLUME: OUT1/2 position, IHF-A typ., Balanced)

Output Jack 1-2: -95 dBu

● S/N RATIO (Typical)

OUTPUT: 105 dB (typ.)

INPUT: 102 dB (typ.)

● Interface

Firewire (IEEE1394)
Digital input/output
 Optical type (conforms to IEC60958)
MIDI IN/OUT

● Connectors

<Front Panel>
Input Jack 1–2 (XLR type / 1/4 inch TRS phone type)
 XLR type (balanced / phantom power +48 V)
 1/4 inch TRS phone type (balanced)

* *Input jack 2 supports high impedance*

Headphones Jack (Stereo 1/4 inch phone type)

<Rear Panel>
Input Jack 3–4 (RCA pin type)
Output Jack 1–4 (1/4 inch TRS phone type (balanced))
Digital In Connector (Optical type)
Digital Out Connector (Optical type)
MIDI Connectors (In, Out)
FireWire Connectors (6 pins type, 4 pins type)

● Power Supply

DC 9 V (AC adaptor)
* FireWire Bus Power

● Current Draw

650 mA

● Dimensions

164 (W) x 148 (D) x 44 (H) mm
6-1/2 (W) x 5-7/8 (D) x 1-3/4 (H) inches

● Weight

0.65 kg / 1 lb 7 oz

● Accessories

Owner's Manual
CD-ROM
AC Adaptor
FireWire cable (6 pins to 6 pins, 6 pins to 4 pins)

(0 dBu = 0.775 V rms)

* *In the interest of product improvement, the specifications and/or appearance of this unit are subject to change without prior notice.*

Index

Numerics

4-pin connector	15
4-pin type	14
6-pin connector	15
6-pin type	14

A

AC adaptor jack	15
ASIO	30–31
Audio input device	30
Audio MIDI Setup	21
Audio output device	30

B

BUS	14
-----------	----

C

Combo input jacks	10
Cubase	45

D

Digital input connector	17
Digital input switch	11, 38
Digital output connector	16
Digital Performer	43
direct monitor mixer section	12
direct monitor section	12
Direct monitor soft control switch	12, 37
Direct monitor volume	12, 37–39

E

EDIROL FA-66 Driver settings	46
------------------------------------	----

F

FireWire (IEEE 1394) cables	8
FireWire (IEEE 1394) connectors	15

G

Grounding terminal	14
--------------------------	----

H

Headphone jack	13
----------------------	----

I

Input impedance select switch	10, 36
Input jacks	17
Input level adjustment knob	17
Input sensitivity knob	37
Input sensitivity knobs	10

L

Limiter switch	16
Logic	44

M

Mac OS	18
Main output jacks	16
MIDI	30
MIDI IN	30
MIDI IN/OUT connectors	16
MIDI music playback	32
MIDI OUT	30

O

optical	16–17
Output indicator	11
Output jacks	16
Output volume	13

P

Peak/Limiter indicator	11
Phantom power switch	16, 37
Power indicator	11
Power switch	14

S

Sample rate select switch	15, 36, 38
SONAR	40
Sound playback	32
Sound recording	32
STEREO/MONO select switch	12, 36
Sync indicator	11

W

WDM	30–31
Windows	24

MEMO

MEMO

For EU Countries



- UK** This symbol indicates that in EU countries, this product must be collected separately from household waste, as defined in each region. Products bearing this symbol must not be discarded together with household waste.
- DE** Dieses Symbol bedeutet, dass dieses Produkt in EU-Ländern getrennt vom Hausmüll gesammelt werden muss gemäß den regionalen Bestimmungen. Mit diesem Symbol gekennzeichnete Produkte dürfen nicht zusammen mit dem Hausmüll entsorgt werden.
- FR** Ce symbole indique que dans les pays de l'Union européenne, ce produit doit être collecté séparément des ordures ménagères selon les directives en vigueur dans chacun de ces pays. Les produits portant ce symbole ne doivent pas être mis au rebut avec les ordures ménagères.
- IT** Questo simbolo indica che nei paesi della Comunità europea questo prodotto deve essere smaltito separatamente dai normali rifiuti domestici, secondo la legislazione in vigore in ciascun paese. I prodotti che riportano questo simbolo non devono essere smaltiti insieme ai rifiuti domestici.
Ai sensi dell'art. 13 del D.Lgs. 25 luglio 2005 n. 151.
- ES** Este símbolo indica que en los países de la Unión Europea este producto debe recogerse aparte de los residuos domésticos, tal como esté regulado en cada zona. Los productos con este símbolo no se deben depositar con los residuos domésticos.
- PT** Este símbolo indica que nos países da UE, a recolha deste produto deverá ser feita separadamente do lixo doméstico, de acordo com os regulamentos de cada região. Os produtos que apresentem este símbolo não deverão ser eliminados juntamente com o lixo doméstico.
- NL** Dit symbool geeft aan dat in landen van de EU dit product gescheiden van huishoudelijk afval moet worden aangeboden, zoals bepaald per gemeente of regio. Producten die van dit symbool zijn voorzien, mogen niet samen met huishoudelijk afval worden verwijderd.
- DK** Dette symbol angiver, at i EU-lande skal dette produkt opsamles adskilt fra husholdningsaffald, som defineret i hver enkelt region. Produkter med dette symbol må ikke smides ud sammen med husholdningsaffald.
- NO** Dette symbolet indikerer at produktet må behandles som spesialavfall i EU-land, iht. til retningslinjer for den enkelte regionen, og ikke kastes sammen med vanlig husholdningsavfall. Produkter som er merket med dette symbolet, må ikke kastes sammen med vanlig husholdningsavfall.
- SE** Symbolen anger att i EU-länder måste den här produkten kasseras separat från hushållsavfall, i enlighet med varje regions bestämmelser. Produkter med den här symbolen får inte kasseras tillsammans med hushållsavfall.
- FI** Tämä merkintä ilmaisee, että tuote on EU-maissa kerättävä erillään kotitalousjätteistä kunkin alueen voimassa olevien määräysten mukaisesti. Tällä merkinnällä varustettuja tuotteita ei saa hävittää kotitalousjätteiden mukana.
- HU** Ez a szimbólum azt jelenti, hogy az Európai Unióban ezt a terméket a háztartási hulladékotól elkülönítve, az adott régióban érvényes szabályozás szerint kell gyűjteni. Az ezzel a szimbólummal ellátott termékeket nem szabad a háztartási hulladék közé dobni.
- PL** Symbol oznacza, że zgodnie z regulacjami w odpowiednim regionie, w krajach UE produktu nie należy wyrzucać z odpadami domowymi. Produktów opatrzonych tym symbolem nie można utylizować razem z odpadami domowymi.
- CZ** Tento symbol udává, že v zemích EU musí být tento výrobek sbírán odděleně od domácího odpadu, jak je určeno pro každý region. Výrobky nesoucí tento symbol se nesmí vyhazovat spolu s domácím odpadem.
- SK** Tento symbol vyjadruje, že v krajinách EÚ sa musí zber tohto produktu vykonávať oddelene od domového odpadu, podľa nariadení platných v konkrétnej krajine. Produkty s týmto symbolom sa nesmú vyhazovať spolu s domovým odpadom.
- EE** See sümbol näitab, et EL-i maades tuleb see toode olemprügist eraldi koguda, nii nagu on igas piirkonnas määratletud. Selle sümboliga märgitud tooteid ei tohi ära visata koos olmeprügiga.
- LT** Šis simbolis rodo, kad ES šalyse šis produktas turi būti surenkamas atskirai nuo buitinių atliekų, kaip nustatyta kiekviename regione. Šiuo simboliu paženklinoti produktai neturi būti išmetami kartu su buitinėmis atliekomis.
- LV** Šis simbols norāda, ka ES valstīs šo produktu jāievāc atsevišķi no mājstaimniecības atkritumiem, kā noteikts katrā reģionā. Produktus ar šo simbolu nedrīkst izmest kopā ar mājsaimniecības atkritumiem.
- SI** Ta simbol označuje, da je treba proizvod v državah EU zbirati ločeno od gospodinskih odpadkov, tako kot je določeno v vsaki regiji. Proizvoda s tem znakom ni dovoljeno odlagati skupaj z gospodinskimi odpadki.
- GR** Το σύμβολο αυτό υποδηλώνει ότι στις χώρες της Ε.Ε. το συγκεκριμένο προϊόν πρέπει να συλλέγεται χωριστά από τα υπόλοιπα οικιακά απορρίμματα, σύμφωνα με όσα προβλέπονται σε κάθε περιοχή. Τα προϊόντα που φέρουν το συγκεκριμένο σύμβολο δεν πρέπει να απορρίπτονται μαζί με τα οικιακά απορρίμματα.

Information

When you need repair service, call your nearest EDIROL/Roland service center or authorized EDIROL/Roland distributor in your country as shown below.

—EDIROL—

EUROPE

EDIROL (Europe) Ltd.
Studio 3/4 114 Power Road
London W4 5PY
U. K.
TEL: +44 (0)20 8747 5949
FAX: +44 (0)20 8747 5948
http://www.edirol.com/europe

Deutschland

TEL: 0700 33 47 65 20

Italia

TEL: 02 93777829

Roland

NORTH AMERICA

CANADA

Roland Canada Ltd.
(Head Office)
5480 Parkwood Way Richmond
B. C., V6V 2M4 CANADA
TEL: (604) 270 6626

Roland Canada Ltd.

(Toronto Office)
170 Admiral Boulevard
Mississauga On L5T 2N6
CANADA
TEL: (905) 362 9707

U. S. A.

Roland Corporation U.S.
5100 S. Eastern Avenue
Los Angeles, CA 90040-2938,
U. S. A.
TEL: (323) 890 3700

AFRICA

EGYPT

Al Fanny Trading Office
9, EBN Nagdi Al Askalany
Street,
Ard El Golf, Heliopolis,
Cairo 11341, EGYPT
TEL: 20-2-417-1828

REUNION

Maison FO - YAM Marcel
25 Rue Jules Hermann,
Chaudron - BP79 97 491
Ste Clotilde Cedex,
REUNION ISLAND
TEL: (0262) 218-429

SOUTH AFRICA

Paul Bothner(PTY)Ltd.
Royal Cape Park, Unit 24
Londonderry Road, Ottery 7800
Cape Town, SOUTH AFRICA
TEL: (021) 799 4900

ASIA

CHINA

Roland Shanghai Electronics Co., Ltd.
No. 1500 Pingliang Road
Shanghai 200900, CHINA
TEL: (021) 5580-0800

Roland Shanghai Electronics Co., Ltd.

(BEIJING OFFICE)
10F, No.18-3 Section Anhuixili
Chaoyang District Beijing
100011 CHINA
TEL: (010) 6426-0505

VIENT NAM

Suoi Nhac Company, Ltd
370 Cach Mang Thang Tam St.
Dist.3, Ho Chi Minh City,
VIET NAM
TEL: 9316540

HONG KONG

Parsons Music Ltd.
8th Floor, Railway Plaza, 39
Chatham Road South, T.S.T.,
Kowloon, HONG KONG
TEL: 2333 1863

INDIA

Rivera Digitech (India) Pvt. Ltd.
411, Nirman Kendra
Mahalaxmi Plats Compound
Off. Dr. Edwin Moses Road,
Mumbai-400011, INDIA
TEL: (022) 2493 9051

INDONESIA

PT Citra IntiKama
Jl. Cideng, Timur No. 15J-150
Jakarta Pusat
INDONESIA
TEL: (021) 6324170

KOREA

Cosmos Corporation
1461-9, Seocho-Dong,
Seocho Ku, Seoul, KOREA
TEL: (02) 3486-8855

MALAYSIA/ SINGAPORE

Roland Asia Pacific Sdn. Bhd.
45-1, Block C2, Jalan PJU 1/39,
Dataran Prima, 47301 Petaling
Jaya, Selangor, MALAYSIA
TEL: (03) 7805-3263

PHILIPPINES

G. A. Yunganco & Co. Inc.
339 Gil J. Puyat Avenue
Makati, Metro Manila 1200,
PHILIPPINES
TEL: (02) 899 9801

TAIWAN

ROLAND TAIWAN ENTERPRISE CO., LTD.
Room 5, 9th, No. 112 Chung
Shan N.Road Sec.2, Taipei,
TAIWAN, R.O.C.
TEL: (02) 2561 3339

THAILAND

Theera Music Co., Ltd.
330 Soi Veng NakornKasem,
New Road, Sampantawongse,
Bangkok 10100, THAILAND
TEL: (02) 224-8821

AUSTRALIA/ NEW ZEALAND

AUSTRALIA/ NEW ZEALAND

Roland Corporation Australia Pty., Ltd.
38 Campbell Avenue
De Wey West. NSW 2099
AUSTRALIA

For Australia
TEL: (02) 9982 8266

For New Zealand
TEL: (09) 3098 715

CENTRAL/LATIN AMERICA

ARGENTINA

Instrumentos Musicales S.A.
Av. Santa Fe 2055
(1123) Buenos Aires
ARGENTINA
TEL: (011) 4508-2700

BARBADOS

A&B Music Supplies LTD
12 Webster Industrial Park
Wilbye, St.Michael, Barbados
TEL: (246)430-1100

BRAZIL

Roland Brasil Ltda.
Rua San Jose, 780 Sala B
Parque Industrial San Jose
Cotia - Sao Paulo - SP, BRAZIL
TEL: (011) 4615 5666

CHILE

Comercial Fanny II S.A.
Rut.: 96.919.9120
Nataliel Cox #739, 4th Floor
Santiago - Centro, CHILE
TEL: (02) 688-9540

COLOMBIA

Centro Musica Ltda.
Cra 43 B No 25 A 41 Bododega 9
Medellin, Colombia
TEL: (574)3812529

CURACAO

Zeelandia Music Center Inc.
Orionweg 30
Curacao, Netherlands Antilles
TEL: (305)5926866

DOMINICAN REPUBLIC

Instrumentos Fernando Giráldez
Calle Proyecto Central No.3
Ens. La Esperilla
Santo Domingo,
Dominican Republic
TEL:(809) 683 0305

ECUADOR

Mas Musica
Rumichaca 822 y Zaruma
Guayaquil - Ecuador
TEL:(993-4)2302364

GUATEMALA

Gasa Instrumental
Calzada Roosevelt 34-01,zona 11
Ciudad de Guatemala
Guatemala
TEL:(502) 599-2888

HONDURAS

Almanc Pajaro Azul S.A. de C.V.
BO.Paz Barahona
3 Ave.11 Calle S.O
San Pedro Sula, Honduras
TEL: (504) 553-2029

MARTINIQUE

Musique & Son
Z.I.Les Mangle
97232 Le Lamentin
Martinique F.W.I.
TEL: 596 596 426860

Gigamusik SARL

10 Rue De La Folie
97200 Fort De France
Martinique F.W.I.
TEL: 596 596 512222

MEXICO

Casa Veerkamp, s.a. de c.v.
Av. Toluca No. 323, Col. Olivar
de los Padres 01780 Mexico
D.F. MEXICO

TEL: (55) 5668-6699

NICARAGUA

Bansbach Instrumentos Musicales Nicaragua
Altamira D'Este Calle Principal
de la Farmacia Sta.Avenida
1 Cuadra al Lago-05013
Managua, Nicaragua
TEL: (505)277-2557

PERU

Audionet
Distribuciones Musicales SAC
Juan Fanning 530
Miraflores
Lima - Peru
TEL: (511) 4461388

TRINIDAD

AMR Ltd
Ground Floor
Maritime Plaza
Barataria Trinidad W.I.
TEL: (868)638 6385

URUGUAY

Todo Musica S.A.
Francisco Asca de Figueroa 1771
C.P.: 11.800
Montevideo, URUGUAY
TEL: (02) 924-2335

VENEZUELA

Instrumentos Musicales Allegro,C.A.
Av.las industrias edf.Guitar
import
#7 zona Industrial de Turumo
Caracas, Venezuela
TEL: (212) 244-1122

EUROPE

AUSTRIA

Roland Elektronische Musikinstrumente HmbH.
Austrian Office
Allegro-Bodem-Gasse 8,
A-6020 Innsbruck, AUSTRIA
TEL: (0512) 26 44 260

BELGIUM/FRANCE/ HOLLAND/ LUXEMBOURG

Roland Central Europe N.V.
Houtstraat 3, B-2260, Oevel
(Westerlo) BELGIUM
TEL: (014) 575811

CROATIA

ART-CENTAR
Degenova 3,
HR - 10000 Zagreb
TEL: (1) 466 8493

CZECH REP.

CZECH REPUBLIC DISTRIBUTOR S.r.o
Votavova 247/16
CZ - 180 00 PRAHA 8,
CZECH REP.
TEL: (2) 830 20270

DENMARK

Roland Scandinavia A/S
Nordhavnsvej 17, Postbox 880,
DK-2100 Copenhagen
DENMARK
TEL: 3916 6200

FINLAND

Roland Scandinavia AS, Filial Finland
Elanontie 5
FIN-01510 Vantaa, FINLAND
TEL: (09) 68 24 2020

GERMANY

Roland Elektronische Musikinstrumente HmbH.
Oststrasse 96, 22844
Norderstedt, GERMANY
TEL: (040) 52 60090

GREECE/CYPRUS

STOLLAS S.A.
Music Sound Light
155, New National Road
Patras 26442, GREECE
TEL: 2610 435400

HUNGARY

Roland East Europe Ltd.
Warehouse Area "DEPO" Pfs3
H-2046 Torokbalint,
HUNGARY
TEL: (23) 511011

IRELAND

Roland Ireland
G2 Calmout Park, Calmout
Avenue, Dublin 12
Republic of IRELAND
TEL: (01) 4294444

ITALY

Roland Italy S. p. A.
Viale delle Industrie 8,
20020 Avese, Milano, ITALY
TEL: (02) 937-78300

NORWAY

Roland Scandinavia Avd.
Kontor Norge
Lilleakerveien 2 Postboks 95
Lilleaker N-0216 Oslo
NORWAY
TEL: 2273 0074

POLAND

ROLAND POLSKA SP. Z O.O.
Ul. Gibraltarska 4,
PL-03664 Warszawa POLAND
TEL: (022) 679 44 19

PORTUGAL

Roland Iberia, S.L.
Portugal Office
Cais das Pedras, 8/9-1 Dto
4050-465, Porto, PORTUGAL
TEL: 22 608 00 60

ROMANIA

FBS LINES
Piata Libertatii 1,
535500 Gheorgheni,
ROMANIA
TEL: (266) 364 609

RUSSIA

MaTeK
Devotzhnaya ul.3,korp.6
117 545 Moscow, RUSSIA
TEL: (095) 981-4967

SLOVAKIA

DAN Acoustic s.r.o.
Povazska 18,
SK - 940 01 Nové Zámky
TEL: (035) 6424 330

SPAIN

Roland Iberia, S.L.
Paseo Garcia Faria, 33-35
08005 Barcelona SPAIN
TEL: 92 439 91 00

SWEDEN

Roland Scandinavia A/S
SWEDISH SALES OFFICE
Danvik Center 28, 2 tr.
S-131 30 Nacka SWEDEN
TEL: (08) 702 00 20

SWITZERLAND

Roland (Switzerland) AG
Landstrasse 5, Postfach,
CH-4452 Itingen,
SWITZERLAND
TEL: (061) 927-8383

UKRAINE

EURHYTHMICS Ltd.
P.O.Box 374,
Nedecyev Str. 30
U/A - 89600 Mukachevo,
UKRAINE
TEL: (03131) 414-40

UNITED KINGDOM

Roland (U.K.) Ltd.
Atlantic Close, Swansea
Enterprise Park, SWANSEA
SA7 9HJ,
UNITED KINGDOM
TEL: (01792) 702701

MIDDLE EAST

BAHRAIN

Moon Stores
No.1231&1249 Rumaytha
Building Road 3931, Manama
339 BAHRAIN
TEL: 17 813 942

IRAN

MOCO INC.
No.41 Nike St, Dr.Shariyati Av.,
Rohbonye Cerah Mirdamad
Tehran, IRAN
TEL: (021) 285-4169

ISRAEL

Halilit P. Greenspoon & Sons Ltd.
8 Ketziif Ha'alia Hashnia St.
Tel-Aviv-Yafo ISRAEL
TEL: (03) 6823666

JORDAN

MUSIC HOUSE CO. LTD.
FREDDY FOR MUSIC
P. O. Box 922846
Amman 11192 JORDAN
TEL: (06) 5692696

KUWAIT

EASA HUSAIN AL-YOUSIFI & SONS CO.
Abdullah Salim Street,
Safat, KUWAIT
TEL: 243-6399

LEBANON

Chahine S.A.L.
George Zeidan St, Chahine
Bldg., Achrafieh, P.O.Box: 16-
5857
Beirut, LEBANON
TEL: (01) 20-1441

OMAN

TALENTZ CENTRE L.L.C.
Malatan House No.1
Al Noor Street, Ruwi
SULTANATE OF OMAN
TEL: 2478 3443

QATAR

Badie Studio & Stores
P.O. Box 62,
Doha, QATAR
TEL: 423554

SAUDI ARABIA

aDawlah International Electronics APL
Corniche Road, Aldossary
Bldg., 1st Floor, Alkhobar,
31952 SAUDI ARABIA
P.O.Box 2154, Alkhobar 31952
SAUDI ARABIA
TEL: (03) 898 2081

SYRIA

Technical Light & Sound Center
Rawdia, Abdul Qader Jazairi St.
Bldg. No. 21, P.O.BOX 13520,
Damascus, SYRIA
TEL: (011) 223-5384

TURKEY

ZUHAL DIS TICARET A.S.
Galip Dede Cad. No.37
Beyoglu - Istanbul / TURKEY
TEL: (0212) 249 85 10

U.A.E.

Zak Electronics & Musical Instruments Co. L.L.C.
Zabeel Road, Al Sherooq Bldg.,
No. 14, Ground Floor, Dubai,
U.A.E.
TEL: (04) 3360715



* 0 3 8 9 0 6 3 4 - 0 4 *

03890634

07-09-4N

As of May 1, 2007 (EDIROL-1)