



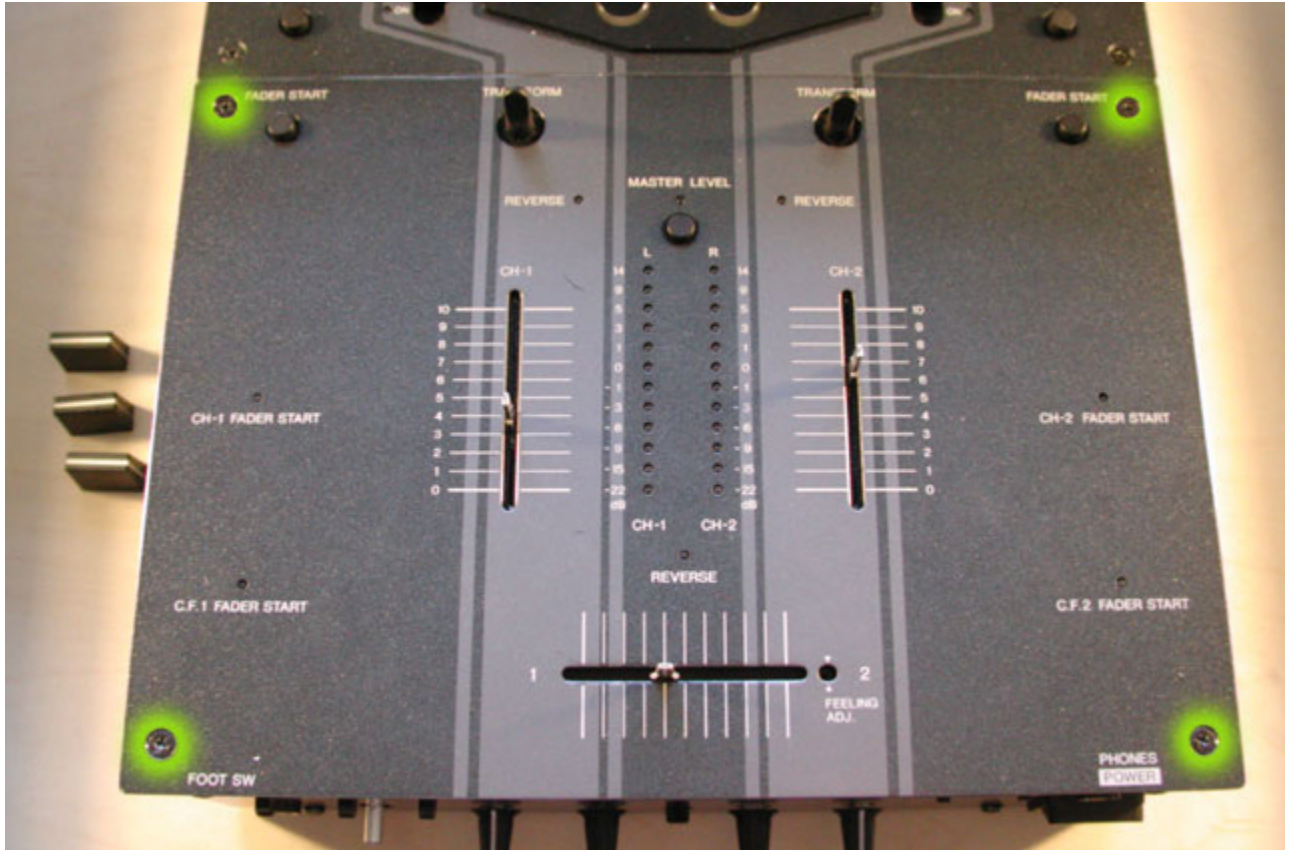
Here's a quick guide to some simple repairs / modifications for the DJM909 and DJM707 mixers.
Before you start, UNPLUG THE MIXER! Nothing smells worse than fried DJ.
You'll need a small Phillips-head screwdriver, a bit of patience, and about 3 minutes.

Step 1: Remove the fader caps



Gently pull the fader caps off the 2 channels and the crossfader.

Step 2: Unscrew the faceplate



Use a Phillips-head screwdriver to remove the four screws, one from each corner. Be sure not to use a screwdriver that is the wrong size as it may strip the screw. You may need to apply some downward force to remove the screws.

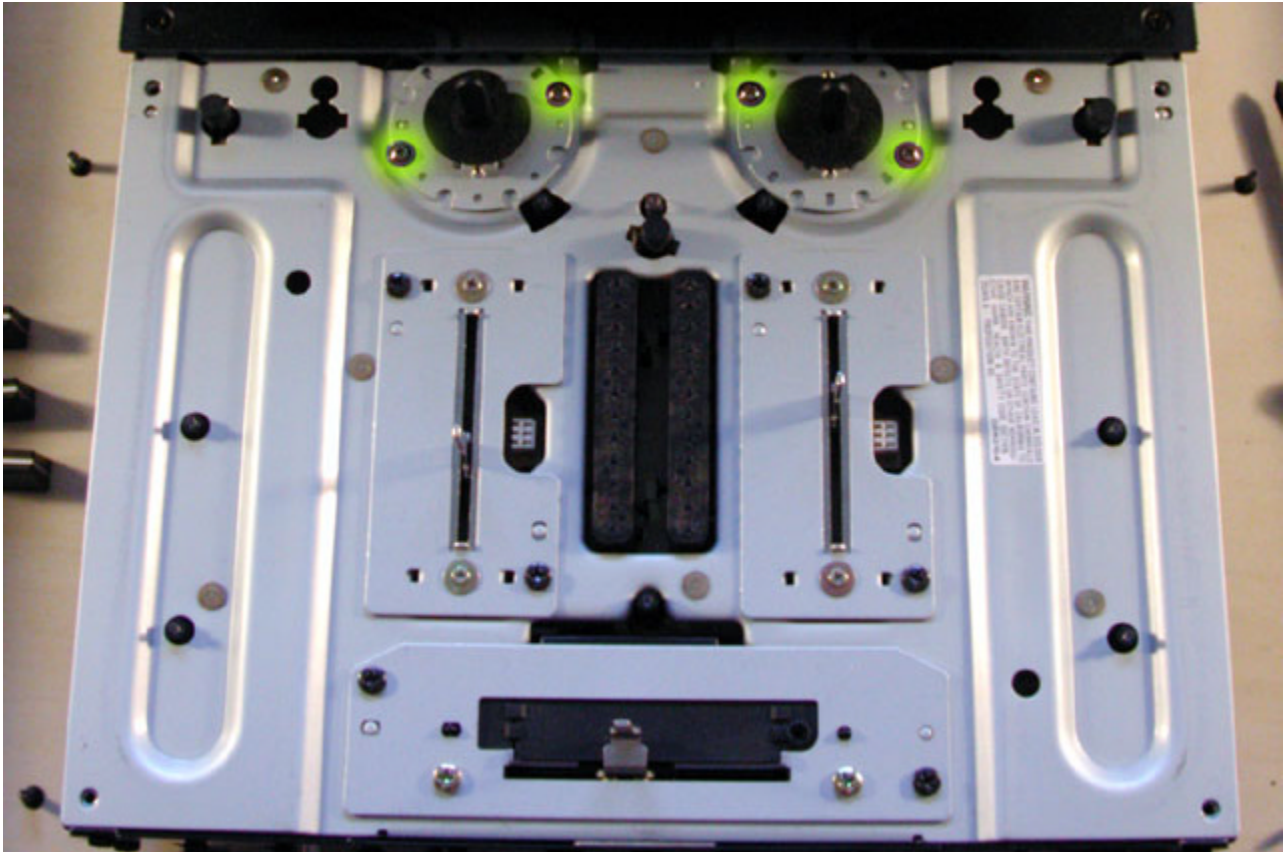
Step 3: Remove the faceplate.



Once the faceplate is unscrewed, simply lift it straight up.

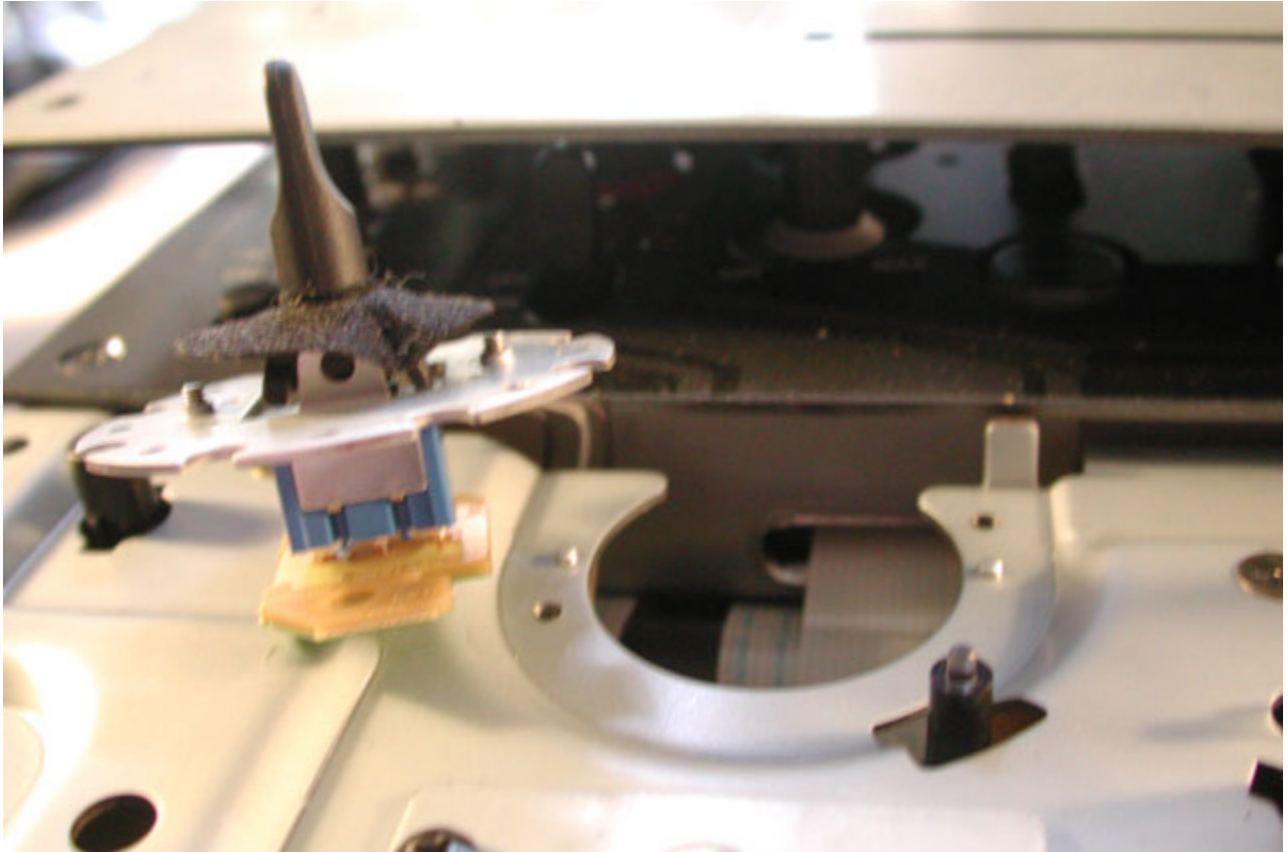
To rotate the transform switches:

Step 4.1: Unscrew the transform switch



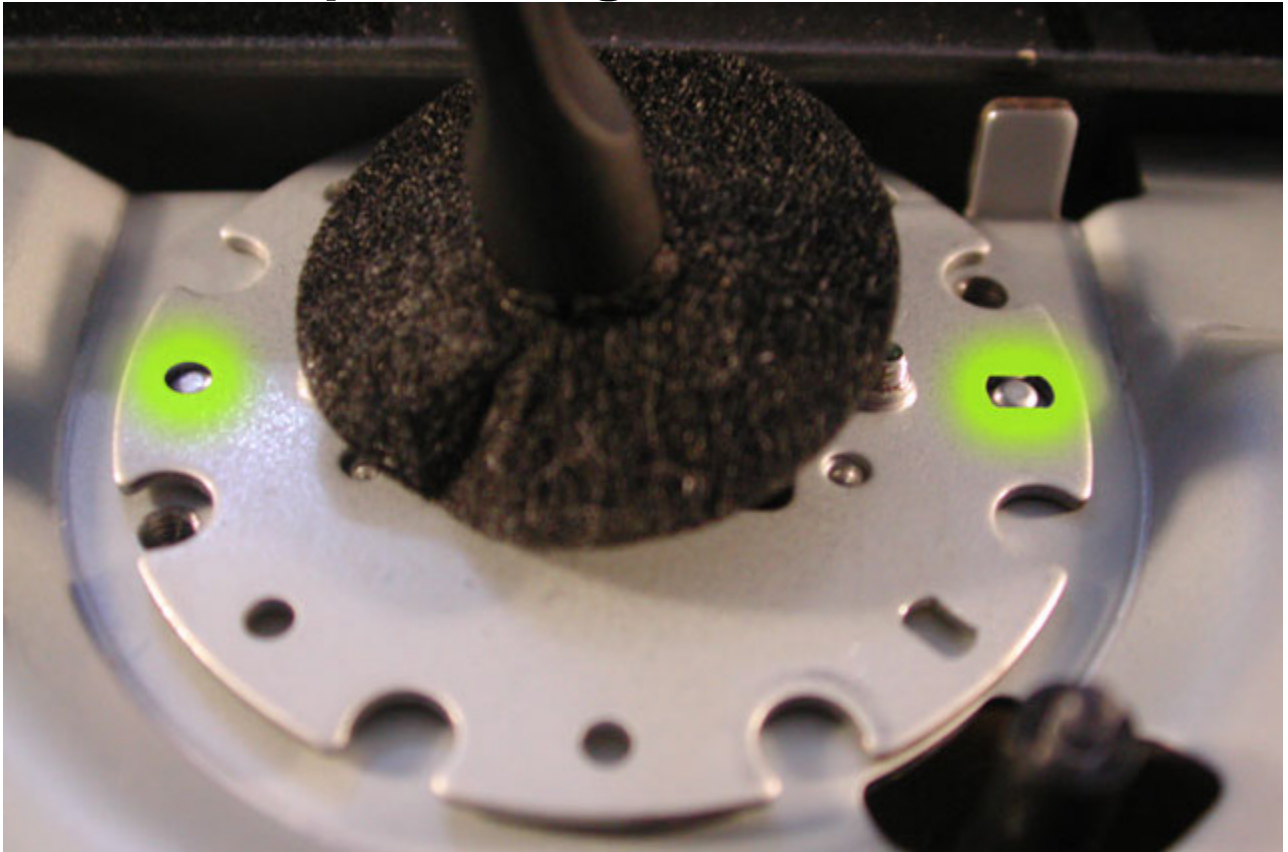
Unscrew the four gold screws from the transform switches.

Step 4.2: Remove and rotate the switch



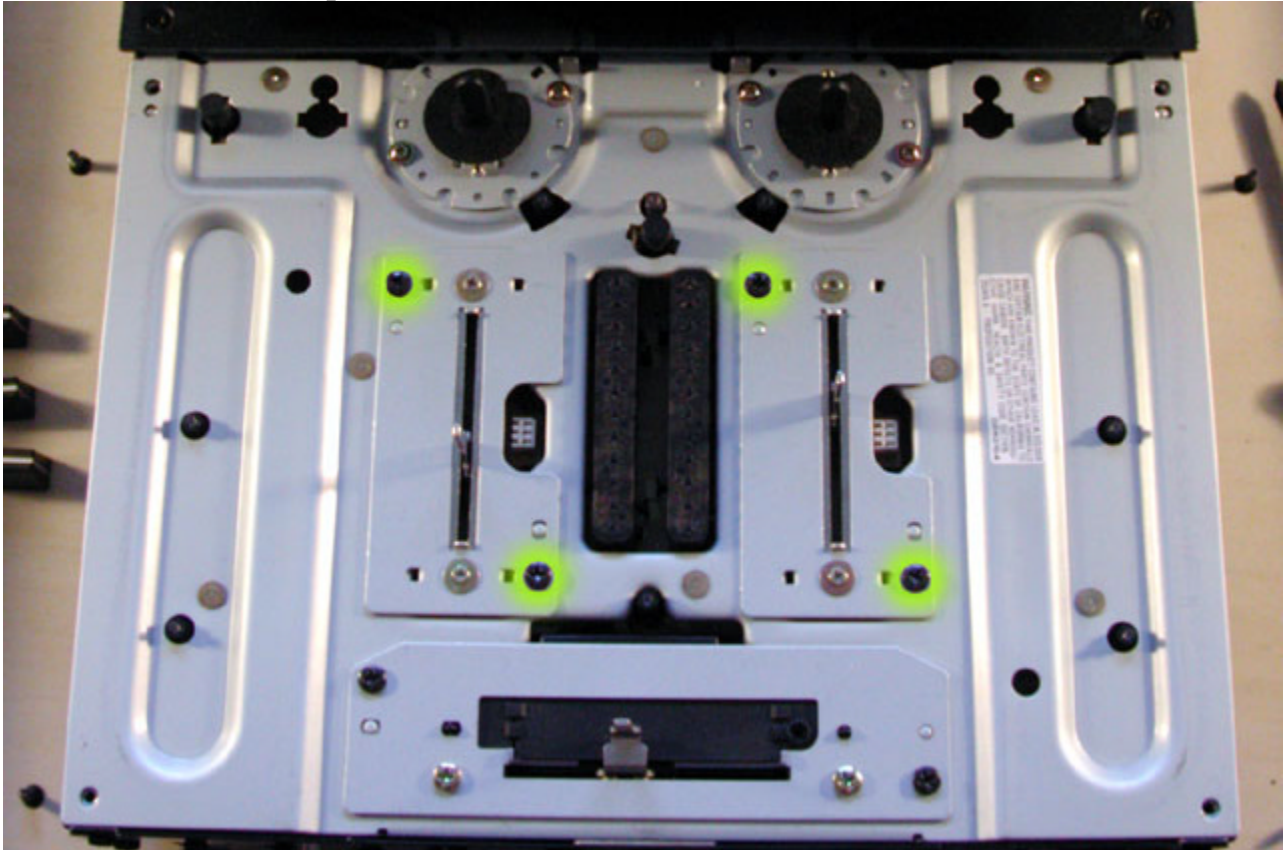
You don't need to take the switch out this far, but simply rotate the switch to your desired position. It can face any direction, even at a 45 or 90 degree angle.

Step 4.3: Align the notches.



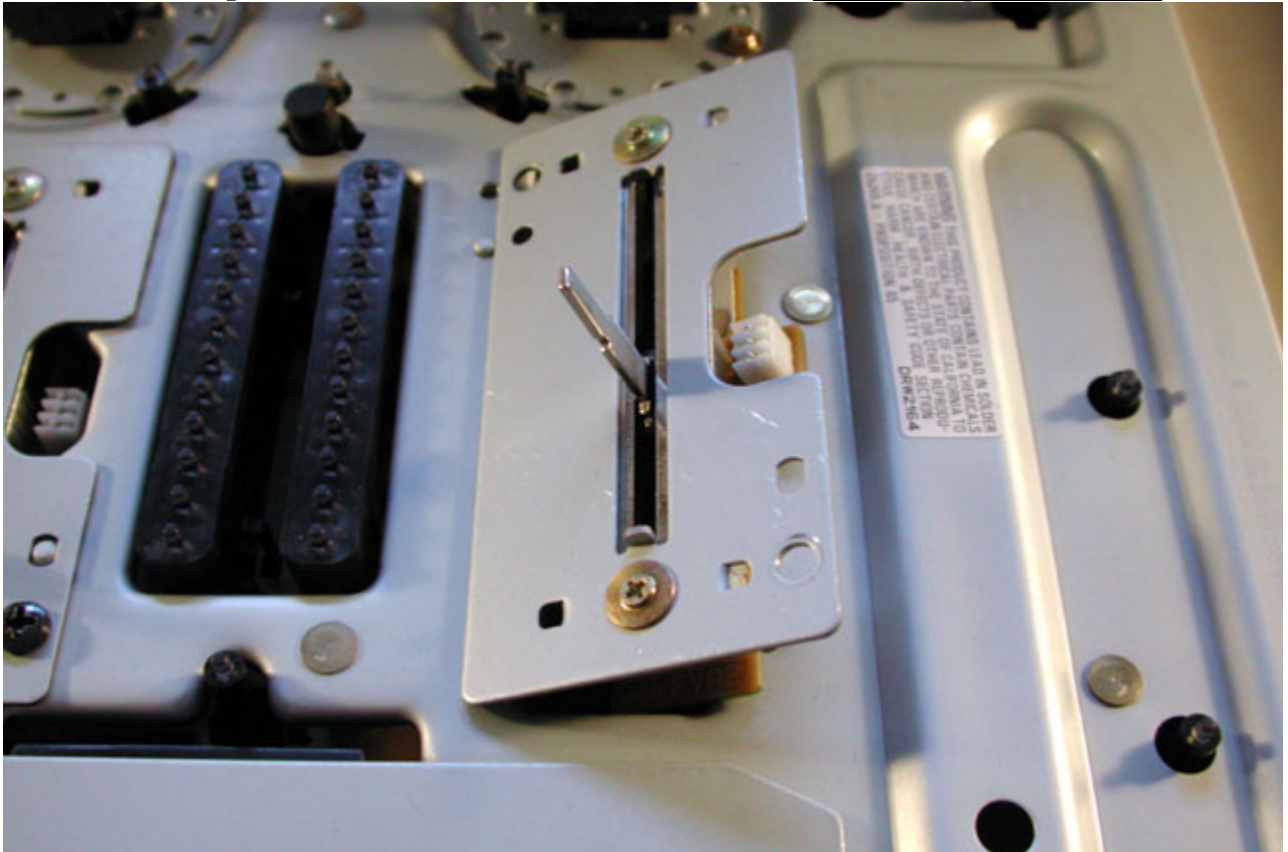
There are 2 little pegs which align to the notches in the switch-plate.
The long side is “normal” and the round side is “cut”.
Once you’re done here, replace the screws for the switch and go to **Step 7**.

To replace a channel fader: Step 5.1: Unscrew the fader

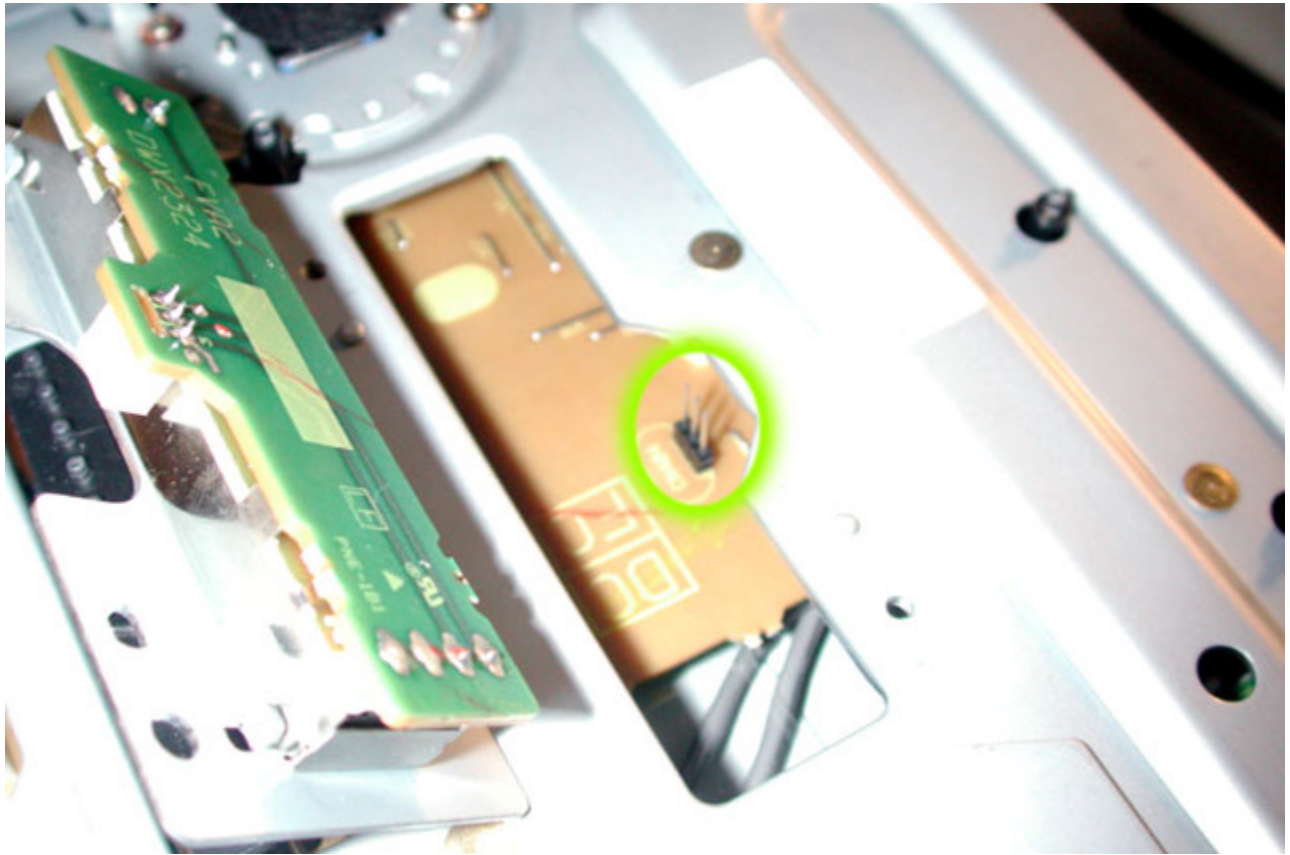


Remove the 2 black screws for the channel fader you are replacing.

Step 5.2: Lift the fader straight up.



This picture shows the fader sitting on an angle on top of the mixer, however when you are removing the fader, you want to be sure you lift it straight up so as not to bend the pins.



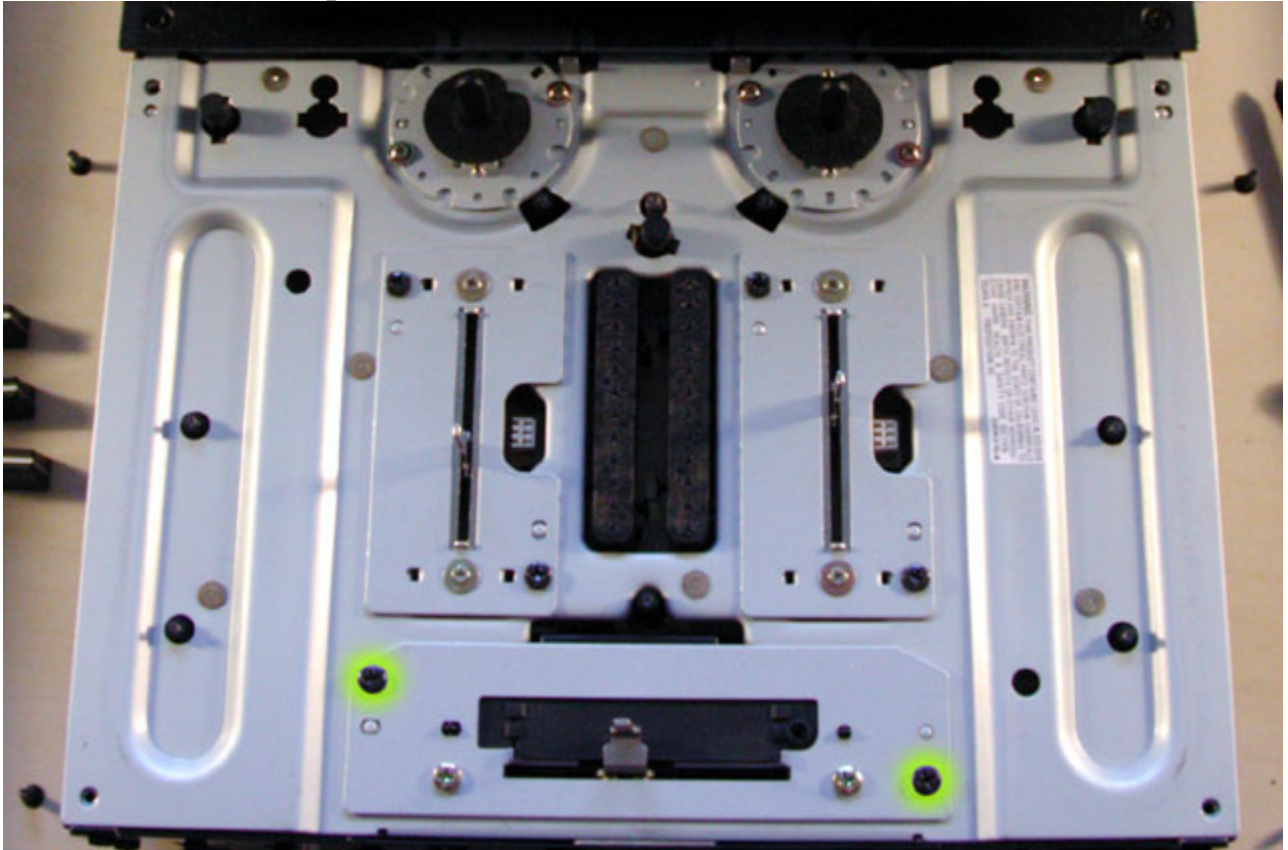
Before inserting the new fader, take note of the 3 pins in the slot.
You don't want to bend these when inserting the fader.

Step 5.3: Insert the new fader



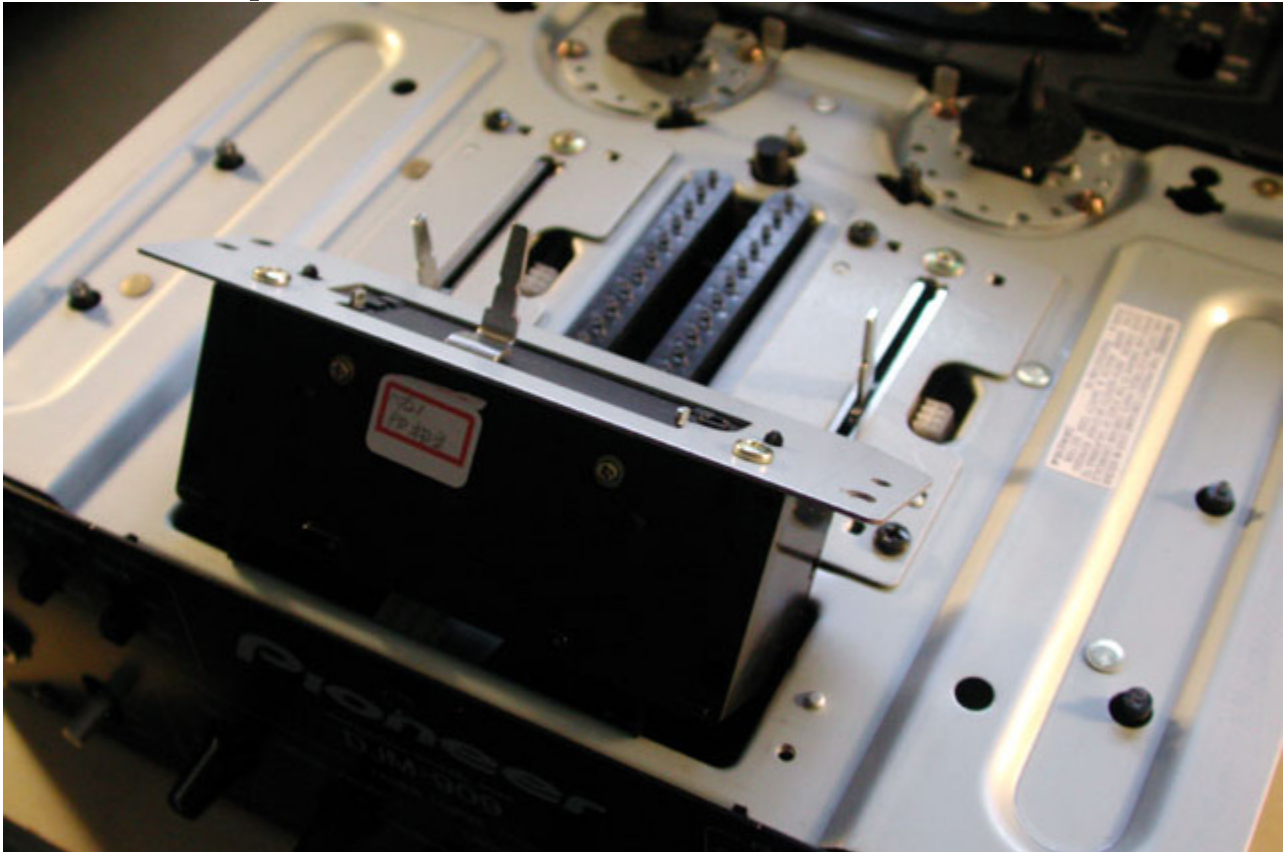
The pins slot into this connector on the fader part. Gently push the fader into place. Once you're done here, replace the screws for the switch and go to **Step 7**.

To replace the crossfader: Step 6.1: Unscrew the fader



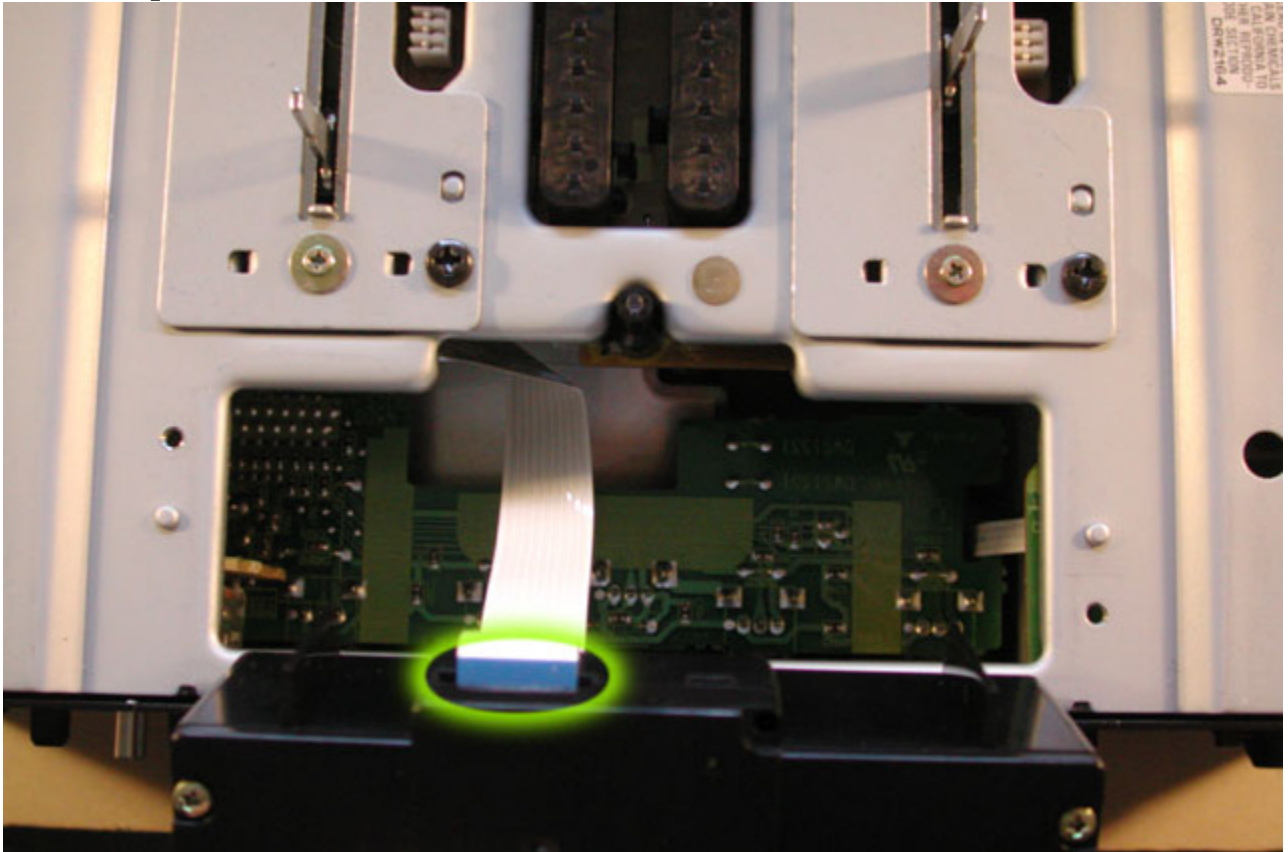
Remove the two black screws from opposite corners of the crossfader.

Step 6.2: Remove the crossfader



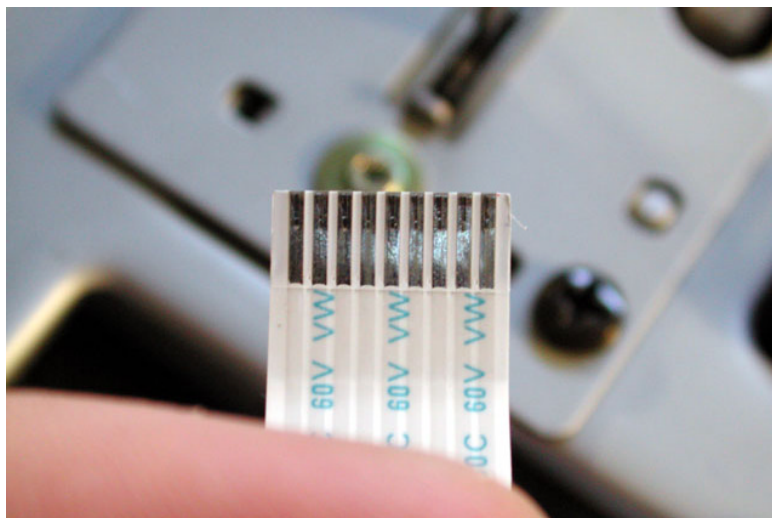
Pull the crossfader straight up, but don't pull too far.

Step 6.3: Remove the ribbon connector



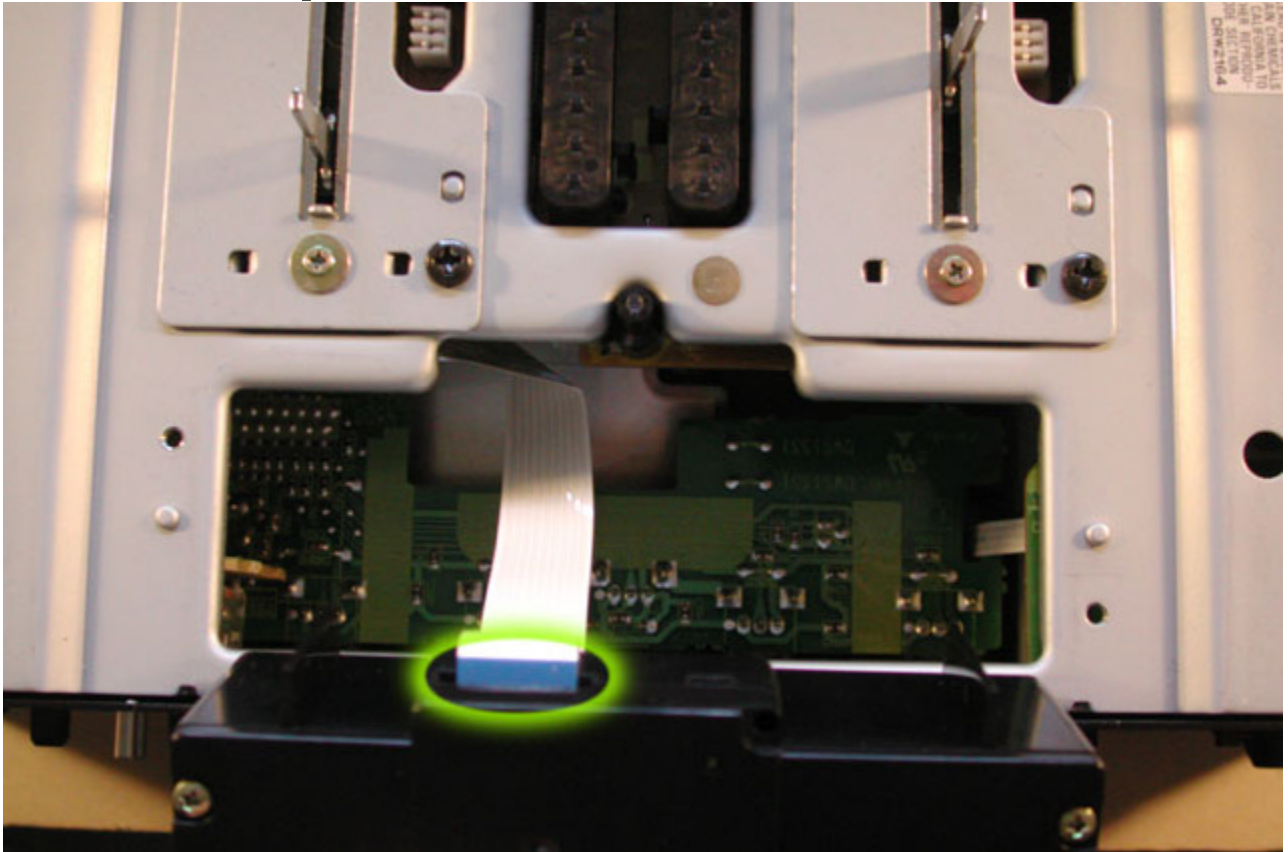
Gently pull the ribbon cable out of the fader module – notice it's blue side up.

Step 6.4: Connect new crossfader



Connect the ribbon-cable to the new crossfader.

Step 6.5: Insert the new fader



As mentioned, the blue side is up – if the blue side is up but the crossfader doesn't go back into the mixer, you have it connected upside down. Turn the fader over and try again.

Once you're done here, replace the screws for the switch and go to **Step 7**.

Simply reverse steps 3, 2, and 1 and you're set!



This picture shows my reversed / 90degree transform switches in the “cut” position.