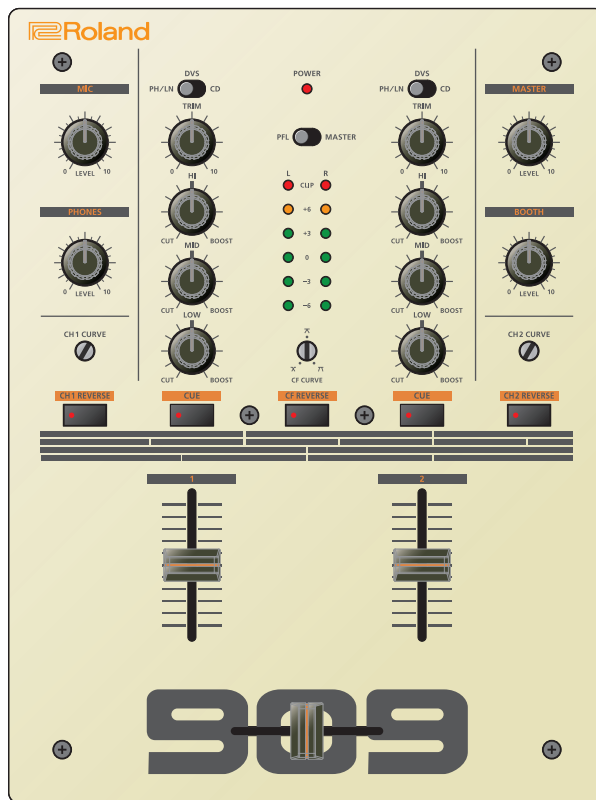


# DJ-99

## DJ Mixer

### Owner's Manual



English

日本語

Deutsch

Français

Italiano

Español

Português



Nederlands

Before using this unit, carefully read "IMPORTANT SAFETY INSTRUCTIONS" (Inside front cover), "USING THE UNIT SAFELY" (p. 2), and "IMPORTANT NOTES" (p. 4). After reading, keep the document(s) where it will be available for immediate reference.




# USING THE UNIT SAFELY

## INSTRUCTIONS FOR THE PREVENTION OF FIRE, ELECTRIC SHOCK, OR INJURY TO PERSONS

### About ⚠ WARNING and ⚠ CAUTION Notices

 <b>WARNING</b>	Used for instructions intended to alert the user to the risk of death or severe injury should the unit be used improperly.
 <b>CAUTION</b>	Used for instructions intended to alert the user to the risk of injury or material damage should the unit be used improperly. * Material damage refers to damage or other adverse effects caused with respect to the home and all its furnishings, as well to domestic animals or pets.

### About the Symbols

	The ⚠ symbol alerts the user to important instructions or warnings. The specific meaning of the symbol is determined by the design contained within the triangle. In the case of the symbol at left, it is used for general cautions, warnings, or alerts to danger.
	The ⚡ symbol alerts the user to items that must never be carried out (are forbidden). The specific thing that must not be done is indicated by the design contained within the circle. In the case of the symbol at left, it means that the unit must never be disassembled.
	The ⚠ symbol alerts the user to things that must be carried out. The specific thing that must be done is indicated by the design contained within the circle. In the case of the symbol at left, it means that the power-cord plug must be unplugged from the outlet.

## ALWAYS OBSERVE THE FOLLOWING

### WARNING

#### Make sure that the power cord is grounded

Connect mains plug of this model to a mains socket outlet with a protective earthing connection.



#### To completely turn off power to the unit, pull out the plug from the outlet

Even with the power switch turned off, this unit is not completely separated from its main source of power. When the power needs to be completely turned off, turn off the power switch on the unit, then pull out the plug from the outlet. For this reason, the outlet into which you choose to connect the power cord's plug should be one that is within easy reach and readily accessible.



#### Do not disassemble or modify by yourself

Do not carry out anything unless you are instructed to do so in the owner's manual. Otherwise, you risk causing malfunction.



#### Do not repair or replace parts by yourself

Refer all servicing to your retailer, the nearest Roland Service Center, or an authorized Roland distributor, as listed on the "Information."



#### Do not use or store in the following types of locations

- Subject to temperature extremes (e.g., direct sunlight in an enclosed vehicle, near a heating duct, on top of heat-generating equipment); or are
- Damp (e.g., baths, washrooms, on wet floors); or are
- Exposed to steam or smoke; or are
- Subject to salt exposure; or are
- Exposed to rain; or are
- Dusty or sandy; or are
- Subject to high levels of vibration and shakiness; or are
- Placed in a poorly ventilated location.



#### Do not place in an unstable location

Otherwise, you risk injury as the result of the unit toppling over or dropping down.



### WARNING

#### Connect the power cord to an outlet of the correct voltage

The unit should be connected to a power supply only of the type described as marked on the rear side of unit.



#### Use only the supplied power cord

Use only the attached power cord. Also, the supplied power cord must not be used with any other device.



#### Do not bend the power cord or place heavy objects on it

Otherwise, fire or electric shock may result.



#### Avoid extended use at high volume

Use of the unit at high volume for extended periods of time may cause hearing loss. If you ever experience any hearing loss or ringing in the ears, you should immediately stop using the unit and consult a specialized physician.



#### Do not allow foreign objects or liquids to enter unit; never place containers with liquid on unit

Do not place containers containing liquid (e.g., flower vases) on this product. Never allow foreign objects (e.g., flammable objects, coins, wires) or liquids (e.g., water or juice) to enter this product. Doing so may cause short circuits, faulty operation, or other malfunctions.



### WARNING

#### Turn off the unit if an abnormality or malfunction occurs

Immediately turn the unit off, remove the power cord from the outlet, and request servicing by your retailer, the nearest Roland Service Center, or an authorized Roland distributor, as listed on the "Information" when:



- The power cord has been damaged; or
- If smoke or unusual odor occurs; or
- Objects have fallen into, or liquid has been spilled onto the unit; or
- The unit has been exposed to rain (or otherwise has become wet); or
- The unit does not appear to operate normally or exhibits a marked change in performance.

#### Be cautious to protect children from injury

Always make sure that an adult is on hand to provide supervision and guidance when using the unit in places where children are present, or when a child will be using the unit.



#### Do not drop or subject to strong impact

Otherwise, you risk causing damage or malfunction.



#### Do not share an outlet with an unreasonable number of other devices

Otherwise, you risk overheating or fire.



#### Do not use overseas

Before using the unit in overseas, consult with your retailer, the nearest Roland Service Center, or an authorized Roland distributor, as listed on the "Information."



#### Use only the specified fuse

When replacing the fuse, use only the specified type (T315mAL250V) and size (5 φ x 20 mm); see p. 7.



**CAUTION**

**When disconnecting the power cord, grasp it by the plug**

To prevent conductor damage, always grasp the power cord by its plug when disconnecting it.



**Periodically clean the power plug**

An accumulation of dust or foreign objects between the power plug and the power outlet can lead to fire or electric shock.



At regular intervals, be sure to pull out the power plug, and using a dry cloth, wipe away any dust or foreign objects that may have accumulated.

**Disconnect the power plug whenever the unit will not be used for an extended period of time**

Fire may result in the unlikely event that a breakdown occurs.



**Route all power cords and cables in such a way as to prevent them from getting entangled**

Injury could result if someone were to trip on a cable and cause the unit to fall or topple.



**Avoid climbing on top of the unit, or placing heavy objects on it**

Otherwise, you risk injury as the result of the unit toppling over or dropping down.



**Never connect/disconnect a power plug if your hands are wet**

Otherwise, you could receive an electric shock.



**Disconnect all cords/cables before moving the unit**

Before moving the unit, disconnect the power plug from the outlet, and pull out all cords from external devices.



**Before cleaning the unit, disconnect the power plug from the outlet**

If the power plug is not removed from the outlet, you risk receiving an electric shock.



**Whenever there is a threat of lightning, disconnect the power plug from the outlet**

If the power plug is not removed from the outlet, you risk causing malfunction or receiving an electric shock.



**Keep small items out of the reach of children**

To prevent accidental ingestion of the parts listed below, always keep them out of the reach of small children.



- Included Parts
  - Fader knob (p. 7)
- Removable Parts
  - Fuse (p. 7)
  - Fuse holder (p. 7)

**CAUTION**

**Handle the ground terminal carefully**

If you remove the screw from the ground terminal, be sure to replace it; don't leave it lying around where it could accidentally be swallowed by small children. When refastening the screw, make that it is firmly fastened, so it won't come loose.



# IMPORTANT NOTES

## Power Supply

- Do not connect this unit to same electrical outlet that is being used by an electrical appliance that is controlled by an inverter or a motor (such as a refrigerator, washing machine, microwave oven, or air conditioner). Depending on the way in which the electrical appliance is used, power supply noise may cause this unit to malfunction or may produce audible noise. If it is not practical to use a separate electrical outlet, connect a power supply noise filter between this unit and the electrical outlet.

## Placement

- Using the unit near power amplifiers (or other equipment containing large power transformers) may induce hum. To alleviate the problem, change the orientation of this unit; or move it farther away from the source of interference.
- This unit may interfere with radio and television reception. Do not use this unit in the vicinity of such receivers.
- Noise may be produced if wireless communications devices, such as cell phones, are operated in the vicinity of this unit. Such noise could occur when receiving or initiating a call, or while conversing. Should you experience such problems, you should relocate such wireless devices so they are at a greater distance from this unit, or switch them off.

- When moved from one location to another where the temperature and/or humidity is very different, water droplets (condensation) may form inside the unit. Damage or malfunction may result if you attempt to use the unit in this condition. Therefore, before using the unit, you must allow it to stand for several hours, until the condensation has completely evaporated.
- Depending on the material and temperature of the surface on which you place the unit, its rubber feet may discolor or mar the surface.
- Do not place containers or anything else containing liquid on top of this unit. Also, whenever any liquid has been spilled on the surface of this unit, be sure to promptly wipe it away using a soft, dry cloth.

## Maintenance

- Never use benzine, thinners, alcohol or solvents of any kind, to avoid the possibility of discoloration and/or deformation.

## Additional Precautions

- Use a reasonable amount of care when using the unit's buttons, sliders, or other controls; and when using its jacks and connectors. Rough handling can lead to malfunctions.
- When disconnecting all cables, grasp the connector itself—never pull on the cable. This way you will avoid causing shorts, or damage to the cable's internal elements.
- A small amount of heat will radiate from the unit during normal operation.

- To avoid disturbing others nearby, try to keep the unit's volume at reasonable levels.
- Do not use connection cables that contain a built-in resistor.

## About Trademarks

- Roland is either registered trademark or trademark of Roland Corporation in the United States and/or other countries.
- Company names and product names appearing in this document are registered trademarks or trademarks of their respective owners.

# MAIN SPECIFICATIONS

## Roland DJ-99: DJ Mixer

<b>Nominal Input Level (OUTPUT MASTER 0 dBu)</b>	CH1, CH2 CD (L, R): -13 dBu CH1, CH2 LN (L, R): -17 dBu CH1, CH2 PH (L, R): -61 dBu CH1, CH2 DVS RETURN (L, R): -13 dBu MIC IN: -40 dBu
<b>Maximum Input Level</b>	CH1, CH2 CD (L, R): 6 Vrms CH1, CH2 LN (L, R): 6 Vrms CH1, CH2 PH (L, R): 0.04 Vrms CH1, CH2 DVS RETURN (L, R): 6 Vrms MIC IN: 0.6 Vrms
<b>Maximum Output Level (1 kHz, typ.)</b>	OUTPUT MASTER (L, R): +15 dBu OUTPUT BOOTH (L, R): +15 dBu PHONES: 31 mW
<b>Recommended Load Impedance</b>	PHONES: 32 ohms
<b>Frequency Response</b>	CH1, CH2 CD, LN, DVS RETURN: 20 Hz–20 kHz (+1/-2 dB) MIC IN: 20 Hz–20 kHz (+1/-3 dB)
<b>Noise Level</b>	CH1, CH2 LN (L, R) → OUTPUT MASTER: 0.6 mVrms or less CH1, CH2 PH (L, R) → OUTPUT MASTER: 6 mVrms or less *TRIM level: center, 1 k ohms terminated, MASTER level: max, IHF-A, typ.
<b>Distortion</b>	CH1, CH2 CD (L, R): 0.2% or less CH1, CH2 LN (L, R): 0.2% or less
<b>Channel EQ (typ.)</b>	HI: 10 kHz +12 dB– -12 dB MID: 980 Hz +12 dB– -28 dB LOW: 100 Hz +12 dB– -28 dB

<b>Connectors</b>	MIC input jack: 1/4-inch phone type PHONES output jacks: Stereo 1/4-inch phone type, Stereo miniature phone type CH1, CH2 CD input jacks (L, R): RCA phono type CH1, CH2 LN/PH input jacks (L, R): RCA phono type CH1, CH2 DVS SEND jacks (L, R): RCA phono type CH1, CH2 DVS RETURN jacks (L, R): RCA phono type CH1, CH2 GND terminals MASTER output jacks (L, R): 1/4-inch phone type BOOTH output jacks (L, R): RCA phono type POWER switch POWER connector Fuse holder
<b>Power Consumption</b>	22 W
<b>Fuse Rating</b>	T315mAL250V (5 φ x 20 mm)
<b>Dimensions</b>	224 (W) x 306 (D) x 104 (H) mm 8-7/8 (W) x 12-1/16 (D) x 4-1/8 (H) inches
<b>Weight (excluding Power cord)</b>	3.3 kg 7 lbs 5 oz
<b>Accessories</b>	Owner's manual Power cord Extra fader knob: 3 pcs

\* 0 dBu=0.775 Vrms

\* This document explains the specifications of the product at the time that the document was issued. For the latest information, refer to the Roland website.

# INTRODUCTION

Thank you very much for purchasing DJ-99.

Welcome to the DJ-99, a brand new 2-channel DJ Scratch Mixer with integrated mini innoFADER.

## Premium quality contactless mini innoFADER integrated

The DJ-99 features the mini innoFADER from Audio Innovate as the crossfader. Inherited from the original innoFADER, it provides smooth and robust feeling to the Scratch DJs. The contactless design gives a long life of over 4,000,000 cycles. The cut-in position can be adjusted by users with simple calibration steps to fit your taste. The Reverse switch and Curve Adjust knobs for both channel faders and crossfader allows you to do different style of scratch skill. The mixer is also compatible with the original innoFADER for future upgrade.

## Innovative DVS Mode for DVS users

The DJ-99's DVS Mode makes DJ's life easier switching between traditional turntable setup and DVS setup. At the rear of the DJ-99, the extra pairs of DVS SEND/RETURN RCA connectors allow you to connect to your DVS audio interface. Just switch to the DVS channel on the top panel, no need to reconnect any cables and you are ready to use as a DVS setup.

## High-Quality and complete mixer

The DJ-99 serves as a full-feature 2-channel mixer: 3-band EQ, 1/4" microphone input, 1/4" & 3.5 mm headphones outputs with monitoring mode selector CUE/MIX/MASTER, 1/4" stereo Master output, and even an RCA Booth output with a dedicated volume control.

SCRATCH SERIOUSLY NOW!

## Features

- High performance 2-channel scratch DJ mixer
- Integrated premium quality contactless mini innoFADER as the crossfader
- Crossfader compatible with the original full-size innoFADER
- Superb scratch performance with adjustable curve and reverse control for both channel faders and crossfader
- DVS mode: Switch between the traditional vinyl/CD setup and DVS software setup without reconnecting the cables
- 1/4" stereo master output and RCA booth output with dedicated volume control
- 1/4" and 3.5 mm headphones outputs with monitoring mode selector CUE/MIX/MASTER

## Package Includes

- DJ-99 x 1pc
- Power cord x 1pc
- Owner's manual x 1pc
- Extra fader knob x 3pcs

English

日本語

Deutsch

Français

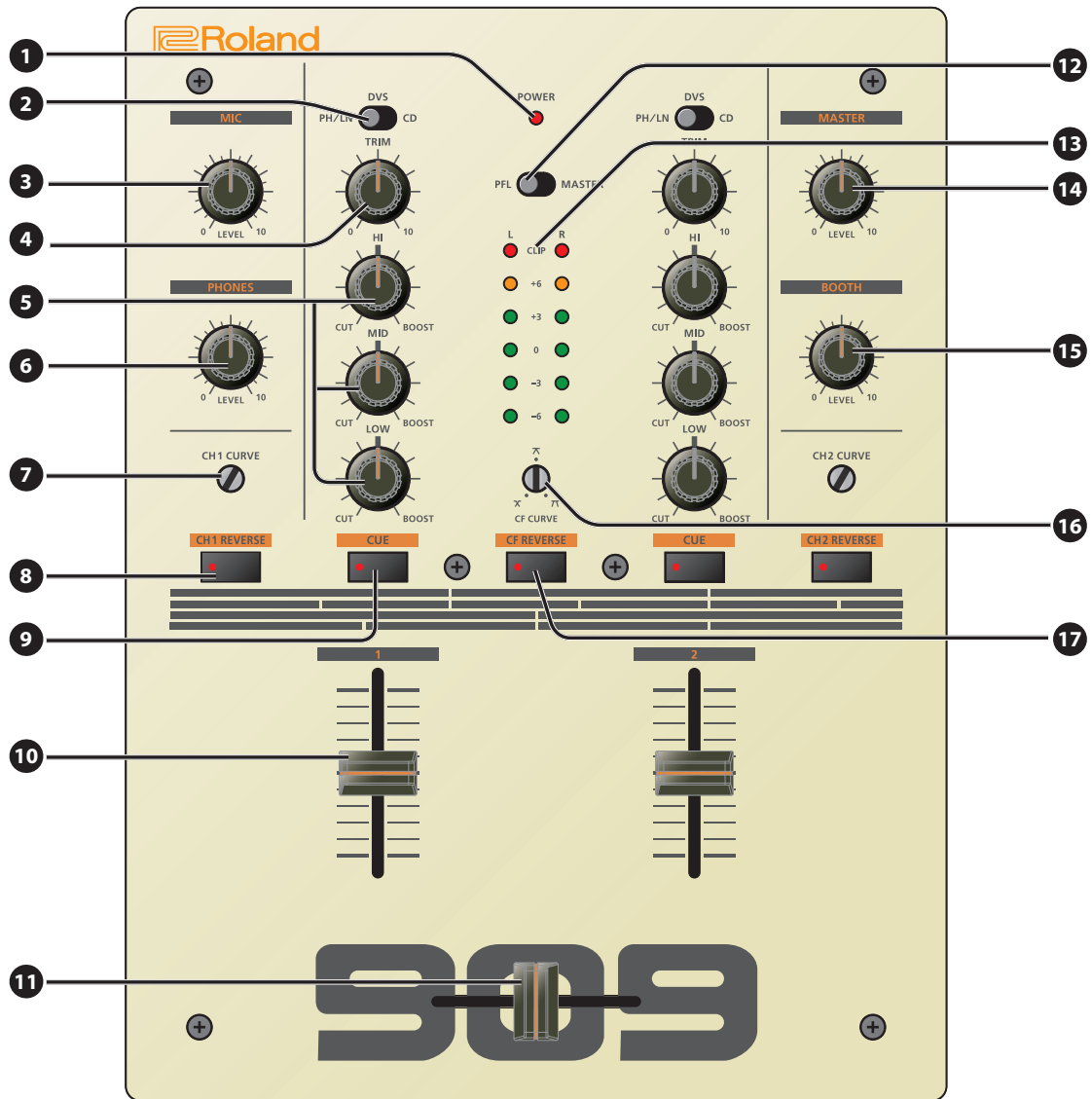
Italiano

Español

Português

Nederlands

# A. FRONT, REAR AND TOP PANELS



**1 POWER indicator**

LED will be lit when the unit is POWER ON

**2 Input selector**

Assign the input source of CH1 & CH2.

**3 MIC level knob**

Adjust the microphone input level.

**4 TRIM level knob**

Adjust the input level for CH1 & CH2.

**5 Channel EQ knob**

Adjust the EQ (HI/MID/LOW) for CH1 & CH2.

**6 PHONES level knob**

Adjust the headphones output level.

**7 Channel Fader curve adjustment knob**

Adjust the shape of the channel fader curve from a fast cut or to a slow fade.

**8 Channel Fader reverse switch**

Press to reverse the direction of the channel fader.

**9 CUE button**

Select the channel(s) to be monitored.

**10 Channel Fader**

Adjust the volume for CH1 & CH2.

**11 Crossfader**

Mix the sound from CH1 & CH2.

**12 PFL/MASTER selector**

Determine the level meter mode.

PFL	left side of the meter will indicate monaural level of CH1, and right side of the meter will indicate monaural level of CH2.
MASTER	show the master output level

**13 PFL/MASTER level meter**

Show the level depending on the position of PFL/MASTER selector

**14 MASTER level knob**

Adjust the master output level.

**15 BOOTH level knob**

Adjust the booth output level.

**16 Crossfader curve adjustment knob**

Adjust the shape of the crossfader curve from a fast cut for scratching or to a slow fade for mixing.

**17 Crossfader reverse switch**

Press to reverse the direction of the crossfader.

**18 MIC input jack (1/4")**

Connect to your microphone.

**19 Headphones Monitoring selector**

Select the source to be monitored with headphones.

CUE	CH1 & CH2
MIX	CH1 & CH2 at left side, and Master output at right side
MASTER	Master output

**20 PHONES output jack (1/4" + 3.5 mm)**

Connect to your headphones.

**21 BOOTH output jack (RCA)**

Connect to your active monitors.

**22 MASTER output jack (1/4" stereo)**

Connect to your active speakers.

**23 POWER switch**

Turn this unit power ON/OFF.

\* Once everything is properly connected, be sure to follow the procedure below to turn on their power. If you turn on equipment in the wrong order, you risk causing malfunction or equipment failure.

**When powering up:** this unit → connected devices

**When powering down:** connected devices → this unit

\* Before turning the unit on/off, always be sure to turn the volume down. Even with the volume turned down, you might hear some sound when switching the unit on/off. However, this is normal and does not indicate a malfunction.

\* If you need to turn off the power completely, first turn off the unit, then unplug the power cord from the power outlet. Refer to **"To completely turn off power to the unit, pull out the plug from the outlet"** (p. 2).

**24 AC IN Connector**

Connect to the main AC power with the power cord. (package included)

**25 Fuse holder**

If the power does not turn on even though the unit is correctly connected, it could be that the fuse has blown. Check the fuse and replace it.

**⚠ Caution when replacing the fuse**

\* Failure to observe the following cautions may result in electric shock.

- Never connect the unit to an electrical power source while replacing the fuse.
- When replacing the fuse, use only the specified type (T315mAL250V) and size (5 φ x 20 mm).
- If you cannot obtain a replacement fuse or if the unit still does not work even after you replace the fuse, contact the Roland Service center.

**26 DVS SEND jack (RCA)**

Connect to the inputs of your DVS audio interface.

**27 DVS RETURN jack (RCA)**

Connect to the outputs of your DVS audio interface.

**28 GND terminal**

Connect to the ground leads of your turntable.

**29 LN/PH selector**

When connecting the turntable with moving magnet cartridge, be sure the switch is in "PH" position. When using the line level device, select "LN." Always be sure the main power is OFF before switching.

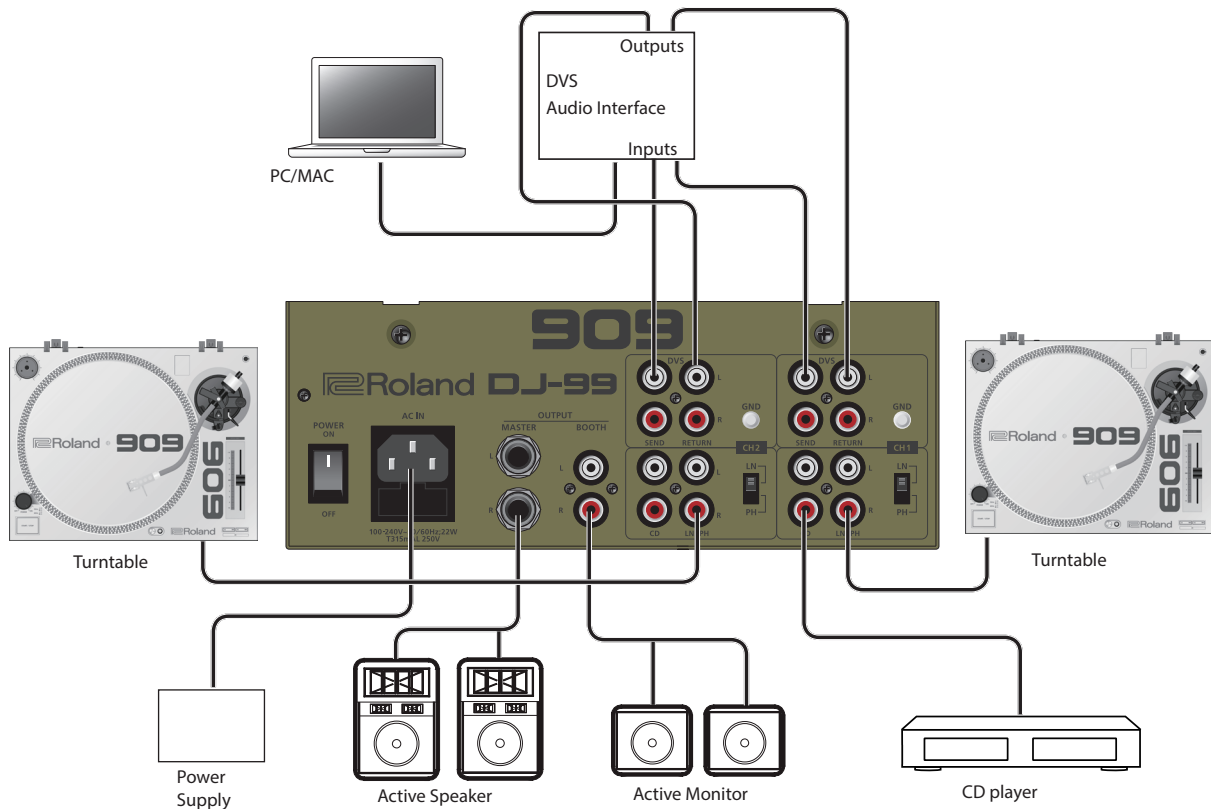
**30 LN/PH input jack (RCA)**

Connect to your turntable or line level device.

**31 CD input jack (RCA)**

Connect to your CD player.

## B. HOW TO CONNECT



Typical connection example is shown in the above diagram.

To use the DJ-99 DVS connection for DVS system, please refer to the below steps:

\* To prevent malfunction and equipment failure, always turn down the volume, and turn off all the units before making any connections.

1. Connect your turntable to the LN/PH input jack of DJ-99, and select the LN/PH selector to "PH" position.
2. Connect the DVS SEND output jack of DJ-99 to the input jack of your DVS audio interface.
3. Connect the output jack of your DVS audio interface to the DVS RETURN input jack of DJ-99.
4. Select the input selector on DJ-99's top panel to "DVS" position.
5. Time code audio signal from the turntable will be by-passed to your audio interface through the DVS SEND output jack, and audio signal from your audio interface will be returned to the DJ-99 through the DVS RETURN input jack.

## C. USING WITH THE ORIGINAL INNOFADER

The DJ-99 is also compatible with the original innoFADER as below table. For more information on innoFADER, please visit Audio Innovate website. <http://www.innofader.com/>

	mini innoFADER	innoFADER	innoFADER Pro
Channel fader	x	x	✓
Crossfader	✓	✓	✓

### WARNING

- Users will take their own risk for the customization. Faulty operations may cause damages to the mixer.
- Opening the cabinet voids the warrantee even if the warrantee period has not expired.



## For EU Countries



- UK** This symbol indicates that in EU countries, this product must be collected separately from household waste, as defined in each region. Products bearing this symbol must not be discarded together with household waste.
- DE** Dieses Symbol bedeutet, dass dieses Produkt in EU-Ländern getrennt vom Hausmüll gesammelt werden muss gemäß den regionalen Bestimmungen. Mit diesem Symbol gekennzeichnete Produkte dürfen nicht zusammen mit dem Hausmüll entsorgt werden.
- FR** Ce symbole indique que dans les pays de l'Union européenne, ce produit doit être collecté séparément des ordures ménagères selon les directives en vigueur dans chacun de ces pays. Les produits portant ce symbole ne doivent pas être mis au rebut avec les ordures ménagères.
- IT** Questo simbolo indica che nei paesi della Comunità europea questo prodotto deve essere smaltito separatamente dai normali rifiuti domestici, secondo la legislazione in vigore in ciascun paese. I prodotti che riportano questo simbolo non devono essere smaltiti insieme ai rifiuti domestici. Ai sensi dell'art. 13 del D.Lgs. 25 luglio 2005 n. 151.
- ES** Este símbolo indica que en los países de la Unión Europea este producto debe recogerse aparte de los residuos domésticos, tal como está regulado en cada zona. Los productos con este símbolo no se deben depositar con los residuos domésticos.
- PT** Este símbolo indica que nos países da UE, a recolha deste produto deverá ser feita separadamente do lixo doméstico, de acordo com os regulamentos de cada região. Os produtos que apresentem este símbolo não deverão ser eliminados juntamente com o lixo doméstico.
- NL** Dit symbool geeft aan dat in landen van de EU dit product gescheiden van huishoudelijk afval moet worden aangeboden, zoals bepaald per gemeente of regio. Producten die van dit symbool zijn voorzien, mogen niet samen met huishoudelijk afval worden verwijderd.
- DK** Dette symbol angiver, at i EU-lande skal dette produkt opsamles adskilt fra husholdningsaffald, som defineret i hver enkelt region. Produkter med dette symbol må ikke smides ud sammen med husholdningsaffald.
- NO** Dette symbolet indikerer at produktet må behandles som spesialavfall i EU-land, iht. til retningslinjer for den enkelte regionen, og ikke kastes sammen med vanlig husholdningsavfall. Produkter som er merket med dette symbolet, må ikke kastes sammen med vanlig husholdningsavfall.

- SE** Symbolen anger att i EU-länder måste den här produkten kasseras separat från hushållsavfall, i enlighet med varje regions bestämmelser. Produkter med den här symbolen får inte kasseras tillsammans med hushållsavfall.
- FI** Tämä merkintä ilmaisee, että tuote on EU-maissa kerättävä erillään kotitalousjätteistä kunkin alueen voimassa olevien määräysten mukaisesti. Tällä merkinnällä varustettuja tuotteita ei saa hävittää kotitalousjätteiden mukana.
- HU** Ez a szimbólum azt jelenti, hogy az Európai Unióban ezt a terméket a háztartási hulladéktól elkülönítve, az adott régióban érvényes szabályozás szerint kell gyűjteni. Az ezzel a szimbóllummal ellátott termékeket nem szabad a háztartási hulladék közé dobni.
- PL** Symbol oznacza, że zgodnie z regulacjami w odpowiednim regionie, w krajach UE produktu nie należy wyrzucać z odpadami domowymi. Produktów opatrzonych tym symbolem nie można utylizować razem z odpadami domowymi.
- CZ** Tento symbol udává, že v zemích EU musí být tento výrobek sbírán odděleně od domácího odpadu, jak je určeno pro každý region. Výrobky nesoucí tento symbol se nesmí vyhazovat spolu s domácím odpadem.
- SK** Tento symbol vyjadruje, že v krajinách EÚ sa musí zber tohto produktu vykonávať oddelene od domového odpadu, podľa nariadení platných v konkrétnej krajine. Produkty s týmto symbolom sa nesmú vyhazovať spolu s domovým odpadom.
- EE** See sümbol näitab, et EL-i maades tuleb see toode olemprügist eraldi koguda, nii nagu on igas piirkonnas määratletud. Selle sümboliga märgitud tooteid ei tohi ära visata koos olmeprügiga.
- LT** Šis simbolis rodo, kad ES šalyse šis produktas turi būti surenkamas atskirai nuo buitinių atliekų, kaip nustatyta kiekviename regione. Šiuo simboliu paženklinėti produktai neturi būti išmetami kartu su buitiniomis atliekomis.
- LV** Šis simbols norāda, ka ES valstīs šo produktu jāievāc atsevišķi no mājsaimniecības atkritumiem, kā noteikts katrā reģionā. Produkts ar šo simbolu nedrīkst izmest kopā ar mājsaimniecības atkritumiem.
- SI** Ta simbol označuje, da je treba proizvod v državah EU zbirati ločeno od gospodinjiskih odpadkov, tako kot je določeno v vsaki regiji. Proizvoda s tem znakom ni dovoljeno odlagati skupaj z gospodinjiskimi odpadki.
- GR** Το σύμβολο αυτό υποδηλώνει ότι στις χώρες της Ε.Ε. το συγκεκριμένο προϊόν πρέπει να συλλέγεται χωριστά από τα υπόλοιπα οικιακά απορρίμματα, σύμφωνα με όσα προβλέπονται σε κάθε περιοχή. Τα προϊόντα που φέρουν το συγκεκριμένο σύμβολο δεν πρέπει να απορρίπτονται μαζί με τα οικιακά απορρίμματα.

## For China

### 有关产品中所含有害物质的说明

本资料就本公司产品中所含的特定有害物质及其安全性予以说明。  
本资料适用于2007年3月1日以后本公司所制造的产品。

### 环保使用期限



此标志适用于在中国国内销售的电子信息产品，表示环保使用期限的年数。所谓环保使用期限是指在自制造日起的规定期限内，产品中所含的有害物质不致引起环境污染，不会对人身、财产造成严重的不良影响。  
环保使用期限仅在遵照产品使用说明书，正确使用产品的条件下才有效。  
不当的使用，将会导致有害物质泄漏的危险。

### 产品中有毒有害物质或元素的名称及含量

部件名称	有毒有害物质或元素					
	铅(Pb)	汞(Hg)	镉(Cd)	六价铬(Cr(VI))	多溴联苯(PBB)	多溴二苯醚(PBDE)
外壳(壳体)	X	O	O	O	O	O
电子部件(印刷电路板等)	X	O	X	O	O	O
附件(电源线、交流适配器等)	X	O	O	O	O	O

O: 表示该有毒有害物质在该部件所有均质材料中的含量均在 SJ/T11363-2006 标准规定的限量要求以下。  
X: 表示该有毒有害物质至少在该部件的某一均质材料中的含量超出 SJ/T11363-2006 标准规定的限量要求。  
因根据现有的技术水平,还没有什么物质能够代替它。

## FEDERAL COMMUNICATIONS COMMISSION RADIO FREQUENCY INTERFERENCE STATEMENT

This equipment has been tested and found to comply with the limits for a Class B digital device, pursuant to Part 15 of the FCC Rules. These limits are designed to provide reasonable protection against harmful interference in a residential installation. This equipment generates, uses, and can radiate radio frequency energy and, if not installed and used in accordance with the instructions, may cause harmful interference to radio communications. However, there is no guarantee that interference will not occur in a particular installation. If this equipment does cause harmful interference to radio or television reception, which can be determined by turning the equipment off and on, the user is encouraged to try to correct the interference by one or more of the following measures:

- Reorient or relocate the receiving antenna.
- Increase the separation between the equipment and receiver.
- Connect the equipment into an outlet on a circuit different from that to which the receiver is connected.
- Consult the dealer or an experienced radio/TV technician for help.

This device complies with Part 15 of the FCC Rules. Operation is subject to the following two conditions:

- (1) this device may not cause harmful interference, and
- (2) this device must accept any interference received, including interference that may cause undesired operation.

This equipment requires shielded interface cables in order to meet FCC class B limit.

Any unauthorized changes or modifications not expressly approved by the party responsible for compliance could void the user's authority to operate the equipment.

CAN ICES-3 (B)/NMB-3 (B)

### 사용자 안내문

기종별	사용자 안내문
B 급 기기 (가정용 방송통신기자재)	이 기기는 가정용(B 급) 전자파적합기기로서 주로 가정에서 사용하는 것을 목적으로 하며, 모든 지역에서 사용할 수 있습니다.

### WARNING

This product contains chemicals known to cause cancer, birth defects and other reproductive harm, including lead.

2036-1 Nakagawa, Hosoe-cho, Kita-ku, Hamamatsu, Shizuoka 431-1304, Japan



## お問い合わせの窓口

### ● 製品に関するお問い合わせ先

ローランドお客様相談センター **050-3101-2555**

電話受付時間： 月曜日～金曜日 10:00～17:00（弊社規定の休日を除く）

※IP電話からおかけになって繋がらない場合には、お手数ですが、電話番号の前に"0000"  
(ゼロ4回)をつけてNTTの一般回線からおかけいただくか、携帯電話をご利用ください。

※上記窓口の名称、電話番号等は、予告なく変更することがありますのでご了承ください。

### ● 最新サポート情報

製品情報、イベント/キャンペーン情報、サポートに関する情報など

ローランド・ホームページ <http://www.roland.co.jp/>

ボス・ホームページ <http://jp.boss.info/>

