

DiGiTech
The Power to Create



DistortionTM
DF-7 **Factory**

DECLARATION OF CONFORMITY

Manufacturer's Name: DigiTech®
Manufacturer's Address: 8760 S. Sandy Parkway
Sandy, Utah 84070, USA

declares that the product:

Product name: DF-7™ Distortion Factory™
Product option: all (requires Class II power adapter that conforms to the requirements of EN60065, EN60742, or equivalent.)

conforms to the following Product Specifications:

Safety: IEC 60065 (1998)
EMC: EN 55013 (1990)
EN 55020 (1991)

Supplementary Information:

The product herewith complies with the requirements of the Low Voltage Directive 73/23/EEC and the EMC Directive 89/336/EEC as amended by Directive 93/68/EEC.

Vice-President of Engineering - MI
8760 S. Sandy Parkway
Sandy, Utah 84070, USA
Date: December 13, 2004

European Contact: Your local DigiTech Sales and Service Office or

Harman Music Group
8760 South Sandy Parkway
Sandy, Utah, 84070 USA
Ph: (801) 566-8800
Fax: (801) 568-7583

Warning

For your protection, please read the following:

Important Safety Instructions

1. Read these instructions.
2. Keep these instructions.
3. Heed all warnings.
4. Do not use this apparatus near water.
5. Clean only with dry cloth.
6. Do not block any ventilation openings. Install in accordance with the manufacturer's instructions.
7. Do not install near any heat sources such as radiators, heat registers, stoves, or other apparatus (including amplifiers) that produce heat.
8. Protect the power cord from being walked on or pinched particularly at plugs, convenience receptacles, and the point where they exit from the apparatus.
9. Unplug this apparatus during lightning storms or when unused for long periods of time.
10. No user serviceable parts inside. Refer all servicing to qualified service personnel. Servicing is required when the apparatus has been damaged in any way, such as power-supply cord or plug is damaged, liquid has been spilled or objects have fallen into the apparatus, the apparatus has been exposed to rain or moisture, does not operate normally, or has been dropped.
11. **WARNING:** To reduce the risk of fire or electric shock, do not expose this apparatus to rain or moisture.
12. Refer to labels on the unit, including bottom cover, or other markings and pertinent information.

Congratulations and special thanks from **DigiTech®** for choosing the **DF-7™** **Distortion Factory™** Pedal.

Distortion pedals are as important to the world of guitar playing as guitar playing is to modern music, and the DigiTech DF-7 Distortion Factory is the most advanced distortion pedal ever created. We've modeled seven of the most popular distortion stompboxes of all time and packed them into one pedal equipped with our new, powerful Flexible Output Mode™ with selectable Stereo Spectrum Technology.

The DF-7 is designed to give you the tonal nuances, drive, and vibe reminiscent of the Ibanez® TS-9*, DOD® Overdrive/Preamp 250, Boss® DS-1*, Pro Co Rat™*, Boss® MT-2 Metal Zone®, DigiTech® Metal Master™, and Electro-Harmonix® Big Muff π®*. The DF-7 also features Flexible Output Mode™ with a choice of six stereo spectrums and the acclaimed CIT™ cabinet modeling technology. This gives you the flexibility to run either directly into a mixer or recording device utilizing the DF-7's cabinet models or amps in either stereo with 6 spectrum choices or mono.

*DigiTech, DOD, Metal Master, Flexible Output Mode and CIT are trademarks of Harman International Industries, Incorporated. Other product names used in this document are trademarks of their respective companies and are not associated or affiliated with DigiTech. They are trademarks of other manufacturers and were used merely to identify products whose sounds were reviewed in the creation of this product.

Included Items

The DigiTech® DF-7™ Distortion Factory™ includes the following items:

- **DigiTech DF-7 Distortion Factory Pedal**
- **This Owner's Manual**
- **Battery Notice**
- **DigiTech Warranty Card**
- **DigiTech Brochure**

Please make sure that all of these items have been included before you get started.

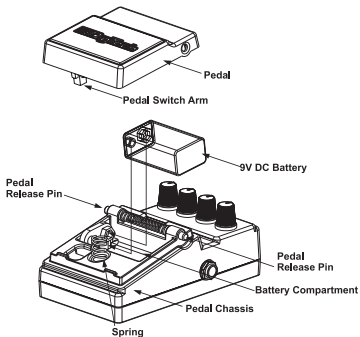
Specifications

- Controls - LEVEL, LOW, MID FREQ, MID, GAIN, HIGH, DISTORTION MODEL, On/Off Pedal
- Jacks - INPUT, OUT 1 (AMP), OUT 2 (MIXER)
- Input Impedance - 1 MOhms
- Output Impedance - 100 Ohms
- Power Supply - (Optional) DigiTech PS200R or 9V Alkaline Dry Battery
- Power Consumption - 4.8 Watts (w/optional PS200R power supply)
- Battery Life - Approximately 4 hours (with continuous usage)
- Dimensions - 4 15/16"(L) x 3 1/8"(W) x 2 1/8"(H)
- Weight - 2 lbs.
- (Optional) Power Supply
 - PS200R - 100 (100V ~ 50/60Hz)
 - PS200R - 120 (120V ~ 60Hz)
 - PS200R - 230 (230V ~ 50Hz)
 - PS200R - 240 (240V ~ 60Hz)

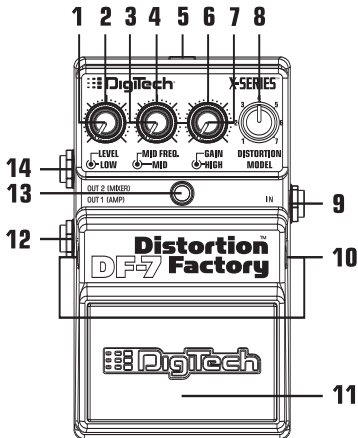
Battery Replacement Directions

1. Using the tip of a 1/4" guitar cable, push one of the release pins in on either side of the pedal, and remove the pedal from the pedal chassis.
2. Remove the battery from the battery compartment and disconnect the battery cable.
3. Connect a new battery to the battery cable and put it back in the battery compartment. Make sure the battery cable does not interfere with the spring or pedal switch arm.
4. Place one hole of the pedal over its corresponding pin.
5. Push the opposite pin in and lower the other side of the pedal into place over the depressed pin. Release the pin. When the pedal is properly fastened, both release pins are flush with the outer side of the pedal.

Battery Replacement Diagram



Feature Diagram



1. LEVEL

Controls the output level of the effect. Turn this knob clockwise to increase the output level, and counter-clockwise to decrease the output level.

2. LOW

Controls each MODEL's low frequency boost or cut.

3. MID FREQ

Adjusts each MODEL's midrange center frequency. The range is from 200Hz to 5kHz.

4. MID

Controls each MODEL's midrange frequency boost or cut.

5. Power Supply Jack

Connect only the DigiTech® PS200R

(9V DC) power supply to this jack. (Refer to Flexible Output Mode™ in **Connections** section.)

6. HIGH

Controls each MODEL's high frequency boost or cut except for the models based on the TS-9*, DS-1*, Big Muff π ®, and Rat*. For the TS-9*, DS-1*, and Big Muff π ® models, this knob acts as a Tone control. For the Rat* model, this knob acts as a Filter control.

7. GAIN

Controls each MODEL's distortion/overdrive gain except for the model based on the Big Muff π ® where it acts as a Sustain control. Turn this knob clockwise to increase the gain, and counter-clockwise to decrease the level.

8. DISTORTION MODEL

Selects one of the following seven distortion pedal models:

1. Based on the Ibanez® TS-9*
2. Based on the DOD® Overdrive/Preamp 250
3. Based on the Boss® DS-1 Distortion*
4. Based on the Pro Co Rat™*
5. Based on the Boss® MT-2 Metal Zone®*
6. Based on the DigiTech® Metal Master™
7. Based on the Electro-Harmonix® Big Muff π ®*

Please refer to the **Model Descriptions** section on the

following pages for more information regarding each model and the **Stereo Spectrum Set-up** section for spectrum selection.

9. INPUT

Connect your instrument to this jack. Connecting a guitar cable to this jack supplies battery power even though the Indicator LED may not be lit. (See **Flexible Output Mode™** section.) To prolong battery life, disconnect all cables when not in use.

10. Pedal Release Pins

These two pins are spring-loaded hinges that hold the pedal in place. Push these pins in to release the pedal from the pedal chassis exposing the battery compartment. (See the **Battery Replacement Diagram**.)

11. Pedal

Press the pedal to turn the effect on and off. (See **Flexible Output Mode** and **Stereo Spectrum Set-up** sections.)

12. OUT 1 (AMP)

Connect this output jack to your guitar amplifier. (See **Flexible Output Mode** and **Stereo Spectrum Set-up** sections.)

13. Indicator LED

This LED indicates when the effect is turned on which Flexible Output Mode is engaged. (See the **Flexible Output Mode** and **Stereo Spectrum Set-up** sections.) If the LED becomes dim or does not light when using battery power (with the cables connected), the battery needs to be replaced.

14. OUT 2 (MIXER)

This output has been specifically designed for use with a full range audio system. It is designed to be plugged directly into a mixer or recording device for optimal performance. Each **MODEL** features a specific cabinet model when using this output. (See **Flexible Output Mode** and **Stereo Spectrum Set-up** sections.)

Distortion Model Descriptions

DISTORTION MODEL 1 **Based on the Ibanez®** **TS-9 Tube Screamer***

This model recreates the vibe of the Ibanez TS-9 Tube Screamer*, famous for delivering a warm, natural tube

overdrive sound. It is ideal for boosting your signal without adding a lot of distortion.

For this model, the **DF-7's GAIN, HIGH, and LEVEL** knobs function like the TS-9*'s Overdrive, Tone, and Level controls, respectively. The **DF-7** also features separate **LOW, MID, and MID FREQ** controls giving you added EQ flexibility so you can customize the model to suit your taste.

Set the **DF-7's LOW, MID, MID FREQ, HIGH, and GAIN** knobs to the 12 O'Clock position to accurately reproduce this pedal model.

When this model is selected, the **CIT cabinet** model used in **Flexible Output Modes 1 and 2** is based on

a Fender® '65 Deluxe Reverb®* 1x12 cabinet.

DISTORTION MODEL 2 **Based on the DOD®** **Overdrive/Preamp 250**

This model reproduces the classic tone of the DOD® Overdrive/Preamp 250. It delivers a punchy overdrive effect typical of the legendary guitar sounds of the mid-seventies. **MODEL 2** is great for pushing the front end of your tube amps and is a key element of many players' tone.

For this model, the **DF-7's GAIN** and **LEVEL** knobs function like the DOD 250's Gain and Level controls, respectively. The **DF-7** also features separate **LOW, MID, MID FREQ,**

and **HIGH** controls giving you added EQ flexibility so you can customize the model to your desired taste. Set the **DF-7's LOW, MID, MID FREQ, HIGH,** and **GAIN** knobs to the 12 O'Clock position to accurately reproduce this pedal model.

When this model is selected, the **CIT cabinet** model used in **Flexible Output Modes 1** and **2** is based on a Marshall®* 4x12 cabinet.

DISTORTION MODEL 3 **Based on the Boss®** **DS-1 Distortion***

This model was inspired by the Boss DS-1 Distortion* pedal. It is great for adding distortion tone to your guitar

signal while maintaining the dynamic nuances of your playing.

For this model, the **DF-7's GAIN, HIGH, and LEVEL** knobs function like the DS-1's* Distortion, Tone, and Level controls, respectively. The **DF-7** also features separate **LOW, MID, and MID FREQ** controls giving you added EQ flexibility so you can customize the model to suit your taste.

Set the **DF-7's LOW, MID, MID FREQ, HIGH, and GAIN** knobs to the 12 O'Clock position to accurately reproduce this pedal model.

When this model is selected, the **CIT cabinet** model used in **Flexible Output Modes 1 and 2** is based on a Johnson®* 4x12 cabinet.

DISTORTION MODEL 4 **Based on the Pro Co Rat™***

This model was fashioned to recreate the sonic boom of the Pro Co Rat* pedal. It offers you the perfect blend of distortion with sustain and cutting power. Use this model to get a harmonically rich tone with an aggressive edge.

For this model, the **DF-7's GAIN, HIGH, and LEVEL** knobs function like the Rat's* Distortion, Filter, and Volume controls, respectively. The **DF-7** also features separate **LOW, MID, and MID FREQ** controls giving you added EQ flexibility so you can customize the model to suit your taste.

Set the **DF-7's LOW, MID, MID**

FREQ, HIGH, and **GAIN** knobs to the 12 O'Clock position to accurately reproduce this pedal model.

When this model is selected, the **CIT cabinet** model used in **Flexible Output Modes 1** and **2** is based on a Fender® Bassman® 2x12 cabinet.

DISTORTION MODEL 5 **Based on the Boss®** **MT-2 Metal Zone®***

This model recreates the over-the-top distortion of the Boss MT-2 Metal Zone® pedal. It will add sustain and body to your sound while juicing up your mids and lows like a full stack.

For this model, the **DF-7's LEVEL**,

LOW, MID, MID FREQ, HIGH, and **GAIN** knobs function like the MT-2's* Level, Low, Mid Freq, Middle, High and Distortion controls, respectively.

Set the **DF-7's LOW, MID, MID FREQ, HIGH**, and **GAIN** knobs to the 12 O'Clock position to accurately reproduce this pedal model.

When this model is selected, the **CIT cabinet** model used in **Flexible Output Modes 1** and **2** is based on a Johnson® 4x12 cabinet.

DISTORTION MODEL 6 **Based on the DigiTech®** **Metal Master™***

This model is based on DigiTech's

highly-acclaimed Metal Master pedal. We modeled the Metal Master with its Morph knob set to the minimum position. This model gives you a sweet singing solo tone with plenty of midrange to cut through any mix and beautifully controllable feedback for hanging on to those key notes.

For this model, the **DF-7's LEVEL, LOW, and HIGH** knobs function like the Metal Master's Level, Low, and Hi controls, respectively. The **DF-7** also features separate **MID, MID FREQ,** and **GAIN** controls giving you added EQ and Gain flexibility so you can customize the model to suit your taste.

Set the **DF-7's LOW, MID, MID FREQ,** and **HIGH** knobs to the 12 O'Clock position and the **GAIN** knob

fully clockwise to accurately reproduce this pedal model.

When this model is selected, the **CIT cabinet** model used in **Flexible Output Modes 1** and **2** is based on a VHT^{®*} 4x12 cabinet.

DISTORTION MODEL 7 **Based on the Electro-** **Harmonix[®] Big Muff π ^{®*}**

This model is designed to capture the essence of the Electro Harmonix Big Muff π ^{*}. It will give you rich, creamy fuzz distortion with violin-like sustain.

For this model, the **DF-7's LEVEL, GAIN,** and **HIGH** knobs function like the Big Muff π ^{*}'s Volume, Sustain, and

Tone controls, respectively. The **DF-7** also features separate **LOW, MID,** and **MID FREQ** controls giving you added EQ flexibility so you can customize the model to suit your taste.

Set the **DF-7's LOW, MID, MID FREQ, HIGH,** and **GAIN** knobs to the 12 O'Clock position to accurately reproduce this pedal model.

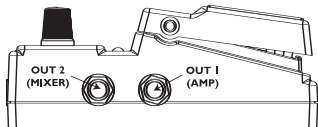
When this model is selected, the **CIT cabinet** model used in **Flexible Output Modes 1** and **2** is based on a Marshall® 4x12 cabinet w/25 watt Celestion® Greenback® speakers.

Flexible Output Mode™

The DF-7 not only sounds great plugged into a single amp or mixer channel, there are also two additional output modes that can be selected during power up. These output modes reconfigure the **OUT 1 (AMP)** and **OUT 2 (MIXER)** outputs into stereo outputs that can be plugged into either two amps or into two channels of a mixer or recording device. Using either of these modes you can access six distinctively different stereo spectrums creating stereo imagery from narrow to double wide.

Connections

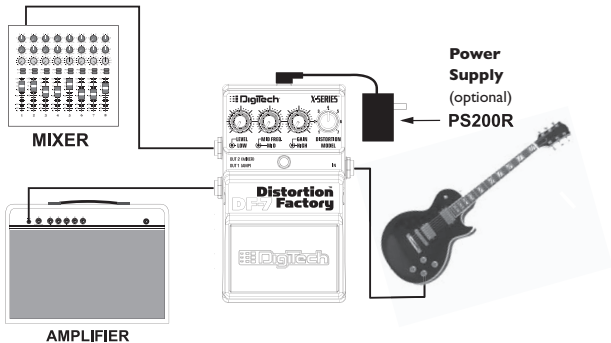
The DF-7 Distortion Factory™ is equipped with a single **INPUT** and a highly powerful set of outputs that can be connected to both an amplifier **OUT 1 (AMP)** and a mixer **OUT 2 (MIXER)** simultaneously or configured so both OUTs can be connected to two mixer channels (Mode 2 stereo) or to two amps (Mode 3 stereo).



Flexible Output Mode™ Operations

Flexible Output Mode	LED	OUT 1	OUT 2
Mode One	1 Flash	Amp Mono	Mixer CIT Mono
Mode Two	2 Flashes	Mixer CIT Stereo	Mixer CIT Stereo
Mode Three	3 Flashes	Amp Stereo	Amp Stereo

Mode One: Single Amp and Single Mixer Out - Mono (default) (ONE FLASH)



Changes made to Flexible Output Mode and Stereo Spectrum are saved even after the DF-7 is turned off. Mode One does not utilize Stereo Spectrum.

Mode One: Single Amp and Single Mixer Out - Mono (default) (ONE FLASH)

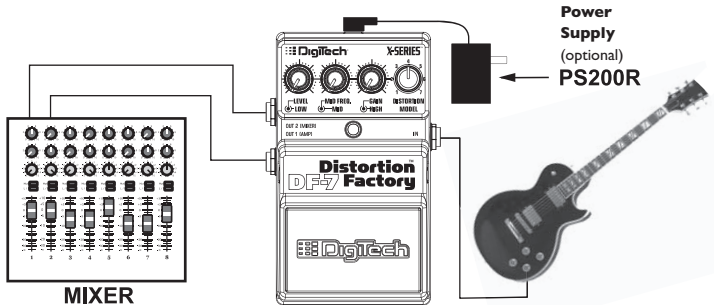
Battery Power Use:

1. Press and hold the pedal switch.
2. Insert a 1/4" guitar cable into the input. The LED will light solid for approximately one second and then turn off.
3. While holding the pedal switch, wait for the Indicator LED to flash once.
4. Release the pedal switch.
(Continuing to hold the pedal switch will cycle through one, two, and three flashes.)

Power Supply Use:

1. Press and hold the pedal switch.
2. Connect the power supply to the power jack on the rear of the pedal chassis. The indicator LED will light solid for approximately one second and then turn off.
3. While holding the pedal switch, wait for the Indicator LED to flash once.
4. Release the pedal switch.
(Continuing to hold the pedal switch will cycle through one, two, and three flashes.)

Mode Two: Dual Mixer Out - Stereo (TWO FLASHES)



Both **OUT 1 (AMP)** and **OUT 2 (MIXER)** can be **CIT™** enabled on each output and configured for stereo use with two mixer/recorder channels.

Mode Two: Dual Mixer Out - Stereo (TWO FLASHES)

Battery Power Use:

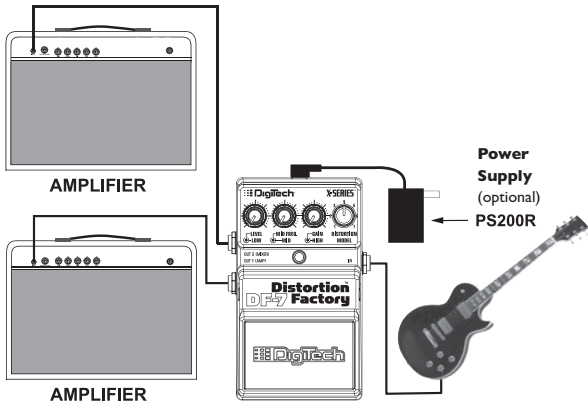
1. Press and hold the pedal switch.
2. Insert a 1/4" guitar cable into the input. The LED will light solid for approximately one second and then turn off.
3. While holding the pedal switch, wait for the Indicator LED to flash twice.
4. Release the pedal switch.
(Continuing to hold the pedal switch will cycle through one, two, and three flashes.)

Power Supply Use:

1. Press and hold the pedal switch.
2. Connect the power supply to the power jack on the rear of the pedal chassis. The indicator LED will light solid for approximately one second and then turn off.
3. While holding the pedal switch, wait for the Indicator LED to flash twice.
4. Release the pedal switch.
(Continuing to hold the pedal switch will cycle through one, two, and three flashes.)

Note: Refer to the Stereo Spectrum section for Mode 2 Stereo Spectrum selection.

Mode Three: Dual Amp Out - Stereo (THREE FLASHES)



Both **OUT 1 (AMP)** and **OUT 2 (MIXER)** can be configured for stereo use with two amplifiers

Mode Three: Dual Amp Out - Stereo - (THREE FLASHES)

Battery Power Use:

1. Press and hold the pedal switch.
2. Insert a 1/4" guitar cable into the input. The LED will light solid for approximately one second and then turn off.
3. While holding the pedal switch, wait for the Indicator LED to flash three times.
4. Release the pedal switch.
(Continuing to hold the pedal switch will cycle through one, two, and three flashes.)

Power Supply Use:

1. Press and hold the pedal switch.
2. Connect the power supply to the power jack on the rear of the pedal chassis. The indicator LED will light solid for approximately one second and then turn off.
3. While holding the pedal switch, wait for the Indicator LED to flash three times.
4. Release the pedal switch.
(Continuing to hold the pedal switch will cycle through one, two, and three flashes.)

Note: Refer to the Stereo Spectrum Selection section for Mode 3 Stereo Spectrum selection.

Stereo Spectrum Selection

In addition to having the two stereo output modes (Mode 2 and Mode 3), the DF-7 also has six different stereo spectrums to choose from when using Mode 2 or Mode 3. To activate the stereo spectrums, follow the steps in the **Stereo Spectrum Setup** section and choose a stereo spectrum with the **DISTORTION MODEL** knob.

Note: The DF-7 must be in Mode 2 or Mode 3 to activate Stereo Spectrum Mode. Changes made to Flexible Output Mode and Stereo Spectrum are saved even after the DF-7 is turned off. Mode One does not utilize Stereo Spectrum.

Stereo Spectrum Set-Up:

1. Press and hold the Pedal Switch for 5 seconds. The Indicator LED will flash twice if the DF-7 is in Mode 2, or three times if the DF-7 is in Mode 3.
2. While the indicator LED is flashing, turn the **DISTORTION MODEL** knob to select a Stereo Spectrum. Setting 1 is no spectrum; setting 2 is the narrowest spectrum; settings 3-6 are progressively wider; setting 7 is the widest spectrum.
3. Once you've selected a spectrum, press the Pedal Switch. The Indicator LED will stop flashing and the spectrum will be active.
4. Select the desired Distortion Model with the **DISTORTION MODEL** knob.

WARRANTY: We at **DigiTech** are proud of our products and back-up each one with the following warranty:

1. The warranty registration card must be mailed within ten days after purchase date to validate this warranty.
2. DigiTech warrants this product, when used solely within the U.S., to be free from defects in materials and workmanship under normal use and service.
3. DigiTech liability under this warranty is limited to repairing or replacing defective materials that show evidence of defect, provided the product is returned to DigiTech WITH RETURN AUTHORIZATION, where all parts and labor will be covered up to a period of **one** year (this warranty is extended to a period of **six** years when the product has been properly registered by mail or through our website). A Return Authorization number may be obtained from DigiTech by telephone. The company shall not be liable for any consequential damage as a result of the product's use in any circuit or assembly.
4. Proof-of-purchase is considered to be the burden of the consumer.
5. DigiTech reserves the right to make changes in design, or make additions to, or improvements upon this product without incurring any obligation to install the same on products previously manufactured.
6. The consumer forfeits the benefits of this warranty if the product's main assembly is opened and tampered with by anyone other than a certified DigiTech technician or, if the product is used with AC voltages outside of the range suggested by the manufacturer.
7. The foregoing is in lieu of all other warranties, expressed or implied, and DigiTech neither assumes nor authorizes any person to assume any obligation or liability in connection with the sale of this product. In no event shall DigiTech or its dealers be liable for special or consequential damages or from any delay in the performance of this warranty due to causes beyond their control.

NOTE: The information contained in this manual is subject to change at any time without notification. Some information contained in this manual may also be inaccurate due to undocumented changes in the product or operating system since this version of the manual was completed. The information contained in this version of the owner's manual supersedes all previous versions.

DigiTech®
8760 South Sandy Parkway
Sandy, Utah 84070
PH (801) 566-8800
FAX (801) 566-7005
www.digitech.com

Manufactured in the USA

Printed 2/2005

DF-7 Distortion Factory™ Owner's Manual 18-1843-A

DigiTech®, DOD®, DF-7 Distortion Factory™, Flexible Output Mode™ and CIT™ are trademarks of Harman International Industries Incorporated.

*Other product names used in this document are trademarks of their respective companies and are not associated or affiliated with DigiTech. They are trademarks of other manufacturers and were used merely to identify products whose sounds were reviewed in the creation of this product.

 A Harman International Company

©2005 Harman International Industries, Incorporated.
All Rights Reserved