



AIRSTREAM WIFI PACK™

user guide

©2017 ADJ PRODUCTS LLC all rights reserved. Information, specifications, diagrams, images, and instructions herein are subject to change without notice. ADJ logo and identifying product names and numbers herein are trademarks of ADJ PRODUCTS LLC. Copyright protection claimed includes all forms and matters of copyrightable materials and information now allowed by statutory or judicial law or hereinafter granted. Product names used in this document may be trademarks or registered trademarks of their respective companies and are hereby acknowledged. All non-ADJ brands and product names are trademarks or registered trademarks of their respective companies.

ADJ PRODUCTS LLC and all affiliated companies hereby disclaim any and all liabilities for property, equipment, building, and electrical damages, injuries to any persons, and direct or indirect economic loss associated with the use or reliance of any information contained within this document, and/or as a result of the improper, unsafe, insufficient and negligent assembly, installation, rigging, and operation of this product.

Apple, the Apple logo, iPhone, iPad, and iPod Touch are trademarks of Apple Inc., registered in the U.S. and other countries. App Store is a service mark of Apple Inc.

ADJ PRODUCTS LLC World Headquarters

6122 S. Eastern Ave. | Los Angeles, CA 90040 USA

Tel: 800-322-6337 | Fax: 323-582-2941 | www.adj.com | support@americandj.com

ADJ Supply Europe B.V.

Junostraat 2 | 6468 EW Kerkrade | Netherlands

Tel: +31 45 546 85 00 | Fax: +31 45 546 85 99 | www.americandj.eu | service@adjgroup.eu

DOCUMENT VERSION

Please check www.adj.com for the latest revision/update of this guide.

Date	Document Version	App Software Version ≥	Pack Firmware Version ≥	Notes
05/18/17	1.3	1.1.0413	2.07	Updated version.
08/26/17	1.4	N/A	N/A	Updated Airstream WiFi Network illustration.
11/07/17	1.5	N/A	N/A	Updated electrical specification and dimension drawing.

CONTENTS

General Information	4
Limited Warranty	6
Safety Instructions and Guidelines	7
Device Set Up & Overview	9
Device Installation	10
Wireless Operation Guidelines	12
App Set Up & Overview	13
App Operation	16
Trouble Shooting Tips	34
Frequently Asked Questions	36
Pack Color ID and Outlet List	37
Technical Specifications	39

GENERAL INFORMATION

INTRODUCTION

Congratulations, you have just purchased one of the most innovative products on the market today! It has been designed to perform reliably for years when the guidelines in this manual are followed. Please read and understand the instructions in this manual carefully and thoroughly before attempting to operate this device. These instructions contain important safety and use information.

The **ADJ AIRSTREAM WIFI PACK™** is an 8-power outlet distribution device (ON/OFF) controlled via the **AirstreamWiFi™** app, available for download from App Store® and compatible with iPhone®, iPad®, and iPod Touch® mobile digital devices. The AirstreamWiFi app creates a private standalone WiFi network, so no existing network infrastructure is required. After connecting the AIRSTREAM WIFI PACK to the AirstreamWiFi app, you can wirelessly switch the 8 power outlets ON/OFF manually, automatically, or based on a specific schedule from iPhone, iPad, and iPod Touch mobile digital devices. The AIRSTREAM WIFI PACK network operates on a 2.4 GHz wireless frequency. The AIRSTREAM WIFI PACK is an ideal indoor solution for mobile entertainers, mobile DJs, bands, nightclubs, bars, production events, where data or power cables need to be hidden from sight.

UNPACKING

Every device has been thoroughly tested and has been shipped in perfect operating condition. Carefully check the shipping carton for damage that may have occurred during shipping. If the carton appears to be damaged, carefully inspect your unit for damage and be sure all accessories necessary to operate the unit have arrived intact. In the event damage has been found or parts are missing, please contact our customer support team for further instructions. Please do not return this unit to your dealer without first contacting customer support at the number listed below. Please do not discard the shipping carton in the trash. Please recycle whenever possible.

CUSTOMER SUPPORT

ADJ® provides a customer support line, to provide set up help and to answer any question should you encounter problems during your set up or initial operation. You may also visit us on the web at www.adj.com for any comments or suggestions. For service related issue please contact ADJ.

ADJ SERVICE USA - Monday - Friday 8:00am to 4:30pm PST

Voice: 800-322-6337

Fax: 323-532-2941

E-mail: support@americandj.com

ADJ GROUP SERVICE EUROPE - Monday - Friday 08:30 to 17:00 CET

Voice: +31 45 546 85 30

Fax: +31 45 546 85 96

E-mail: support@adjgroup.eu

WARRANTY REGISTRATION

Please complete and mail in the enclosed warranty card to validate your purchase. All returned service items whether under warranty or not, must be freight pre-paid and accompany a return authorization (R.A.) number. The R.A. number must be clearly written on the outside of the return package. A brief description of the problem as well as the R.A. number must also be written down on a piece of paper and included in the shipping container. If the unit is under warranty, you must provide a copy of your proof of purchase invoice. Items returned without a R.A. number clearly marked on the outside of the package will be refused and returned at customer's expense. You may obtain a R.A. number by contacting customer support.

IMPORTANT NOTICE!

THERE ARE NO USER SERVICEABLE PARTS INSIDE THIS DEVICE. DO NOT ATTEMPT ANY REPAIRS YOURSELF; DOING SO WILL VOID THE WARRANTY. DAMAGES RESULTING FROM MODIFICATIONS TO THIS DEVICE AND/OR THE DISREGARD OF SAFETY AND OPERATION INSTRUCTIONS IN THIS USER MANUAL VOIDS THE MANUFACTURES WARRANTY AND ARE NOT SUBJECT TO ANY WARRANTY CLAIMS AND/OR REPAIRS.

LIMITED WARRANTY

A. ADJ Products, LLC hereby warrants, to the original purchaser, ADJ Products, LLC products to be free of manufacturing defects in material and workmanship for a prescribed period from the date of purchase (see specific warranty periods below). This warranty shall be valid only if the product is purchased within the United States of America, including possessions and territories. It is the owner's responsibility to establish the date and place of purchase by acceptable evidence, at the time service is sought.

B. For warranty service you must obtain a Return Authorization number (RA#) before sending back the product—please contact ADJ Products, LLC Service Department at 800-322-6337. Send the product only to the ADJ Products, LLC factory. All shipping charges must be pre-paid. If the requested repairs or service (including parts replacement) are within the terms of this warranty, ADJ Products, LLC will pay return shipping charges only to a designated point within the United States. If the entire instrument is sent, it must be shipped in its original package. No accessories should be shipped with the product. If any accessories are shipped with the product, ADJ Products, LLC shall have no liability whatsoever for loss of or damage to any such accessories, or for the safe return thereof.

C. This warranty is void if the serial number has been altered or removed; if the product is modified in any manner which ADJ Products, LLC concludes, after inspection, affects the reliability of the product; if the product has been repaired or serviced by anyone other than the ADJ Products, LLC factory unless prior written authorization was issued to purchaser by ADJ Products, LLC; if the product is damaged because not properly maintained as set forth in the instruction manual.

D. This is not a service contract, and this warranty does not include maintenance, cleaning or periodic check up. During the period specified above, ADJ Products, LLC will replace defective parts at its expense with new or refurbished parts, and will absorb all expenses for warranty service and repair labor by reason of defects in material or workmanship. The sole responsibility of ADJ Products, LLC under this warranty shall be limited to the repair of the product, or replacement thereof, including parts, at the sole discretion of ADJ Products, LLC. All products covered by this warranty were manufactured after August 15, 2012, and bear identifying marks to that effect.

E. ADJ Products, LLC reserves the right to make changes in design and/or improvements upon its products without any obligation to include these changes in any products theretofore manufactured. No warranty, whether expressed or implied, is given or made with respect to any accessory supplied with products described above. Except to the extent prohibited by applicable law, all implied warranties made by ADJ Products, LLC in connection with this product, including warranties of merchantability or fitness, are limited in duration to the warranty period set forth above. And no warranties, whether expressed or implied, including warranties of merchantability or fitness, shall apply to this product after said period has expired. The consumer's and/or Dealer's sole remedy shall be such repair or replacement as is expressly provided above; and under no circumstances shall ADJ Products, LLC be liable for any loss or damage, direct or consequential, arising out of the use of, or inability to use, this product. This warranty is the only written warranty applicable to ADJ Products, LLC Products and supersedes all prior warranties and written descriptions of warranty terms and conditions heretofore published.

LIMITED WARRANTY PERIODS

Non LED Lighting Products = 1-Year (365 Days) (Including Special Effect Lighting, Intelligent Lighting, UV lighting, Strobes, Fog Machines, Bubble Machines, Mirror Balls, Par Cans, Trussing, Lighting Stands, Power/Data Distribution, etc. excluding LED and lamps)

Laser Products = 1-Year (365 Days) (excluding laser diodes which have a 6-Month Limited Warranty)

LED Products = 2-Year (730 Days) (excluding batteries which have a 180 Day Limited Warranty)

NOTE: 2-Year (730 Days) Limited Warranty ONLY applies to product purchased within the United States.

StarTec Series = 1-Year (365 Days) (excluding batteries which have a 180 Day Limited Warranty)

ADJ DMX Controllers = 2 Year (730 Days)

American Audio Products = 1 Year (365 Days)

SAFETY INSTRUCTIONS AND GUIDELINES



This device is designed for indoor venues, on stage, in nightclubs, theatres, etc. Use of this device outdoors and/or wet environments voids all manufacturers warranties. For proper operation, follow the guidelines described in this manual. Only qualified and certified personnel should perform installation of this device. Any modifications to any part of this device will void the original manufactures warranty and increase the risk of damage and/or personal injury. To guarantee a smooth operation, it is important to follow the guidelines in this manual. The manufacturer of this device will not accept responsibility for damages resulting from the misuse and/or disregard of the information printed in this manual.



This device falls under **PROTECTION CLASS 1**. It's essential this device be grounded properly. Only qualified personnel should perform all electrical connections.



INDOOR/DRY LOCATIONS ONLY!
DO NOT EXPOSE DEVICE TO RAIN OR MOISTURE!



DO NOT PLUG INTO A DIMMER PACK!
DO NOT EXCEED 8A / 960W POWER LOAD PER OUTLET!
DO NOT EXCEED 15A / 1800W POWER LOAD PER PACK!

FCC STATEMENT

This device complies with Part 15 of the FCC Rules. Operation is subject to the following two conditions: (1) this device may not cause harmful interference, and (2) this device must accept any interference received, including interference that may cause undesired operation.

FCC RADIO FREQUENCY INTERFERENCE WARNINGS & INSTRUCTIONS

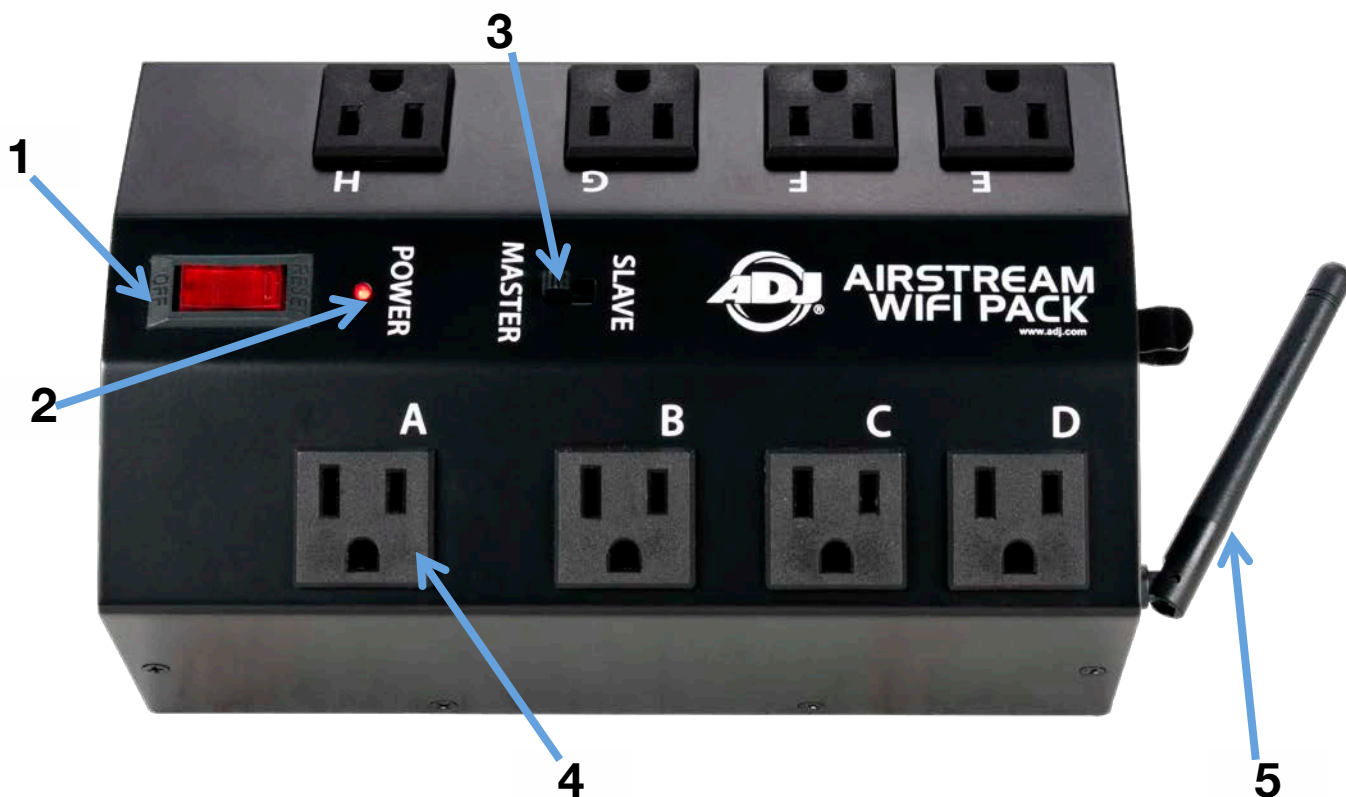
This product has been tested and found to comply with the limits as per Part 15 of the FCC Rules. These limits are designed to provide reasonable protection against harmful interference in a residential installation. This device uses and can radiate radio frequency energy and, if not installed and used in accordance with the included instructions, may cause harmful interference to radio communications. However, there is no guarantee that interference will not occur in a particular installation. If this device does cause harmful interference to radio or television reception, which can be determined by turning the device off and on, the user is encouraged to try to correct the interference by one or more of the following methods:

- Reorient or relocate the device and/or antenna.
- Increase the separation between the device and the receiver.
- Connect the device into an electrical outlet on a circuit different from that which the radio receiver is connected.
- Consult the dealer or an experienced radio/TV technician for help.

SAFETY INSTRUCTIONS AND GUIDELINES

- **DO NOT** position device close to any **FLAMMABLE MATERIALS** while operating.
- **DO NOT** attempt installation and/or operation without knowledge how to do so.
- **DO NOT** permit operation by persons who are not qualified to operate this type of device.
- **DO NOT** shake device, avoid brute force when installing and/or operating.
- **DO NOT** operate this device if the main power cord have become frayed, crimped and/or damaged. Replace any damaged power cords with a similar power rating.
- **DO NOT** remove or break-off the ground plug from the power cord.
- **DO NOT** remove disassemble device, there are NO user serviceable parts inside.
- **ALWAYS** disconnect device from main power source before performing any cleaning.
- **ALWAYS** be sure to install this device in an area that will allow proper ventilation.
- Power cords plugged into the device should be safely routed and secured so they are not likely walked on, pinched, or placed under heavy items.
- Disconnect the main power during long periods of non-use.
- Only use recommended rigging hardware as described in this guide.
- Use the original packaging and materials to transport the device in for service.
- This device should be serviced by qualified service personnel when:
 - A. The power cord or plug has become damaged.
 - B. Objects have fallen on and/or liquid has spilled into the device.
 - C. The device has been exposed to rain and/or moisture.
 - D. The device does not operate normally or exhibits a marked change in performance.

DEVICE SET UP & OVERVIEW



1. **Power / Reset Switch** - Power device ON/OFF and RESET if max power exceeded
2. **Power Indicator LED** - Indicates device is powered ON
3. **Master / Slave Mode Switch** - Determines the mode of the device
4. **Power Outlets A-H** - Power Outlets that can be controlled ON/OFF
5. **WiFi Antenna** - Receives wireless signal from connected mobile digital device

MASTER-SLAVE CONFIGURATION

Each WIFI PACK must be set up as a **MASTER** or **SLAVE** unit, where **1 MASTER** unit wirelessly links to up to 3 **SLAVE** units. The mobile digital device wirelessly controls the MASTER unit exclusively, and the MASTER unit transmits this control wirelessly to additional SLAVE units in the network. To set up a WIFI PACK as a **MASTER** or **SLAVE**, toggle the **MASTER/SLAVE** Mode switch located on top of the WIFI PACK above the power switch. (See image above)

NOTE: ANY WIFI PACK CAN BE A MASTER OR SLAVE, BUT THERE CAN ONLY BE ONE MASTER UNIT.

DEVICE INSTALLATION

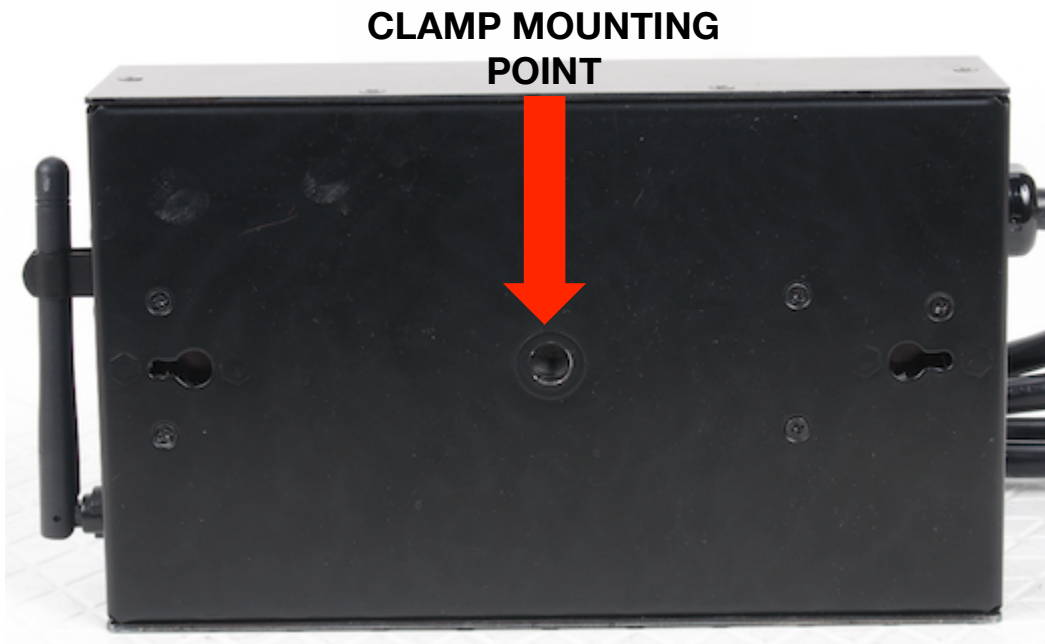
CLAMP / TRUSS MOUNTING

The device can be mounted to truss or a lighting stand using an ADJ clamp (not included).

1. Attach clamp securely to the mounting hole on the bottom of the device using an **M10-1.5** screw.
2. Make sure the clamp is firmly attached to the device before mounting to truss or a lighting stand.

MAKE SURE STRUCTURE CAN SUPPORT THE WEIGHT OF THE DEVICE!

MAKE SURE MOUNTING LOCATION DOES NOT RESTRICT MOVEMENT OF ANTENNA!



DEVICE INSTALLATION

WALL MOUNTING

The device can be mounted to a wall using the mounting holes on the back of the device.

1. Download the wall-mounting template from www.adj.com and print on **US letter size 8.5 x 11 inch** paper.
2. Place the paper on the wall and use the outline to position device where you want to mount it.

MAKE SURE MOUNTING LOCATION DOES NOT RESTRICT MOVEMENT OF ANTENNA!

3. Mark the (2) center points for the screws on the wall with a sharp object. (i.e. punch tool)
4. Using (2) small round head screws (not included) that are appropriate for the wall material (i.e. wood, drywall, or metal), drill screws into the wall at the center point locations you marked.

MAKE SURE SCREWS FIT INTO MOUNTING HOLES BEFORE DRILLING THEM INTO WALL!

DO NOT DRILL THE SCREWS COMPLETELY INTO THE WALL!

Depending on the head size of the screw, leave approximately 0.25 inch (6.35mm) exposed so the device can hang properly when attached to wall.

5. Align the mounting holes on the back of the device to the (2) screws in the wall, push the device onto the screws so the device is completely against the wall.
6. Slide device slightly to secure both screws into the device. Depending on the installation orientation (vertical with wireless antenna at the top or horizontal with antenna on the side), slide the device accordingly to secure it onto the screws.

MAXIMUM POWER LOAD PER OUTLET AND PER PACK

Each WIFI PACK POWER OUTLET can support a maximum load of 8A / 960W.

Each WIFI PACK can support a maximum total load of 15A / 1800W.

NOTE: ALWAYS CHECK THE POWER CONSUMPTION OF EACH DEVICE BEFORE YOU CONNECT IT TO THE WIFI PACK. DO NOT EXCEED THE MAXIMUM LOAD CAPACITY OF THE WIFI PACK.

WIRELESS OPERATION GUIDELINES

There are many factors that affect and/or interrupt a wireless signal such as walls, glass, metal, objects, and people. Therefore it is highly recommended to:

- Install device a minimum of 9.8 ft. (3m) above audiences and/or ground level
- Adjust the wireless antenna in a vertical upright position
- Position device in direct line of sight of the controlling mobile digital device

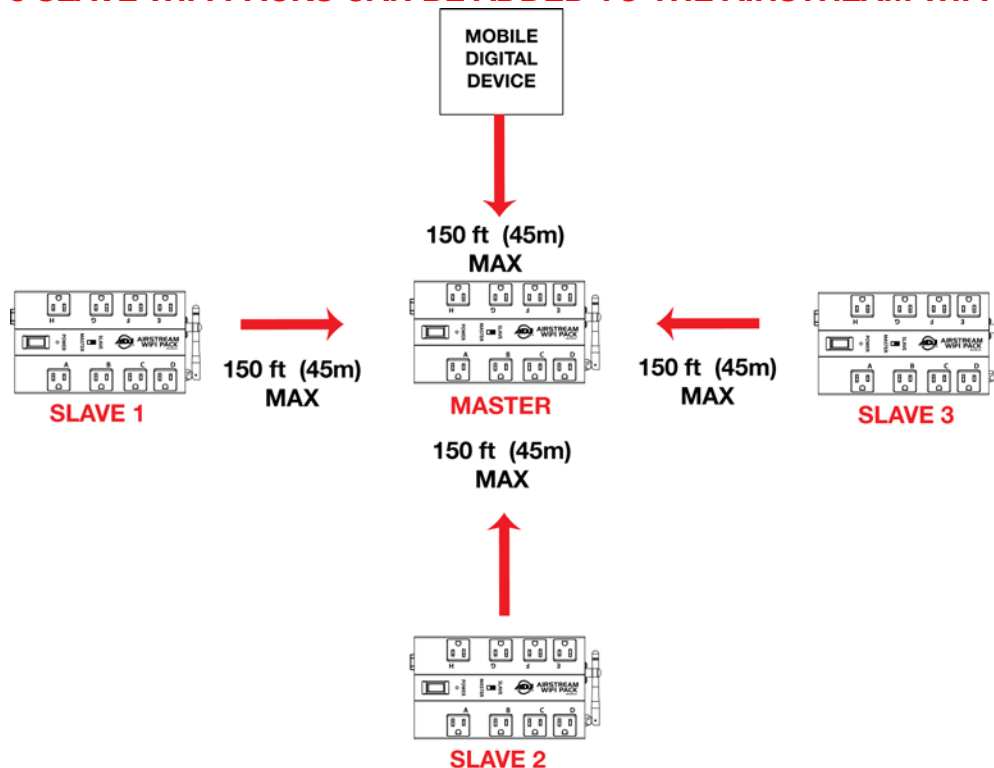
Careful planning and testing of the selected installation location with the controlling mobile digital device is critical to ensure optimum and reliable wireless operation.



WiFi RANGE

The maximum distance between the controlling mobile digital device and MASTER WIFI PACK, and between the MASTER WIFI PACK and each additional SLAVE WIFI PACKS (3 Max) is **150 feet (45m)**.

NOTE: UP TO 3 SLAVE WIFI PACKS CAN BE ADDED TO THE AIRSTREAM WIFI NETWORK.



APP SET UP & OVERVIEW

1. Check your mobile digital device is updated to the latest iOS version (8.0 or later) and update device if necessary before installing app.

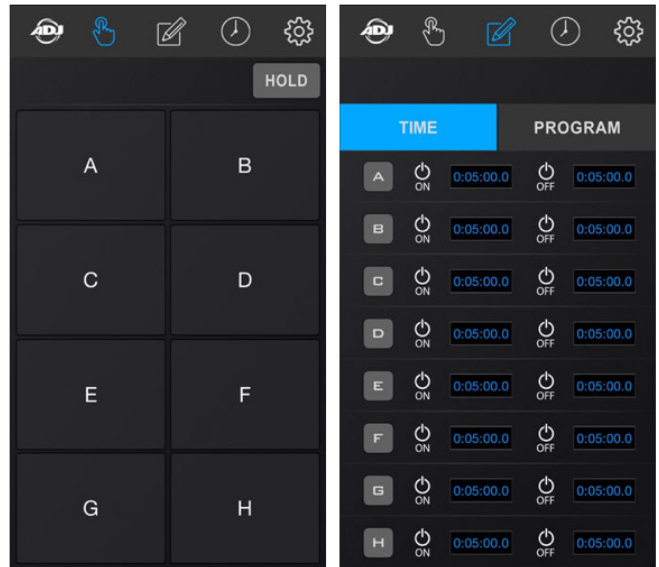
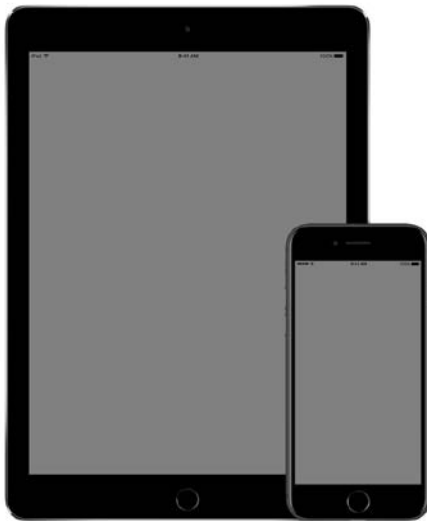
NOTE: THIS IS VERY IMPORTANT TO ENSURE THE APP AND WIFI PACKS FUNCTION CORRECTLY!

2. Download the **AirstreamWiFi** app from the App Store and install on an iPhone, iPad, or iPod Touch.

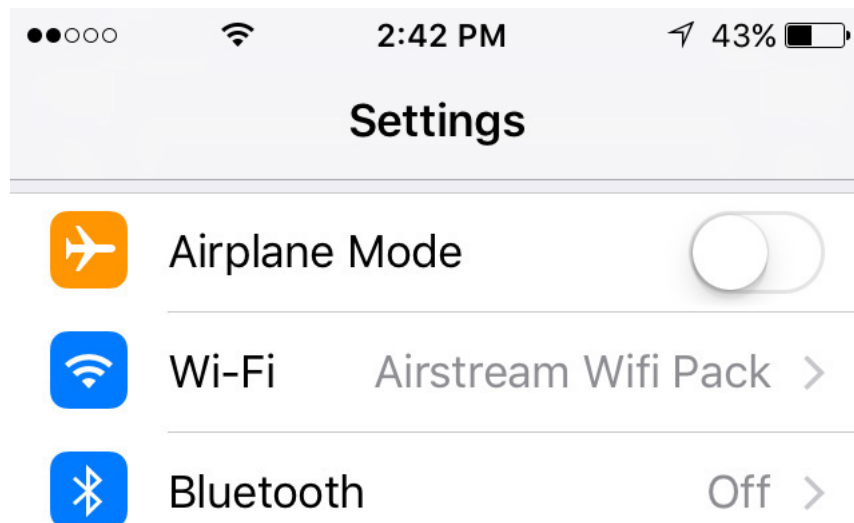


AirstreamWifi
ADJ Products LLC

INSTALL



3. Enable Wi-Fi on your mobile digital device and select the **Airstream WiFi Pack** wireless network, entering the default password **a i r s t r e a m w i f i** to join.



APP SET UP & OVERVIEW [continued]

4. After successfully connecting to the **Airstream WiFi Pack** wireless network, set the mode switch on the first WIFI PACK to **Master** and set the mode switch on additional packs to **Slave**.

(Up to 3 Slave units max per wireless network)

5. Connect your lighting effect devices to any of the 8 power outlets (**A-H**) on each WIFI PACK.

NOTE: ALL CONNECTED DEVICES WITH A POWER SWITCH MUST BE POWERED ON.

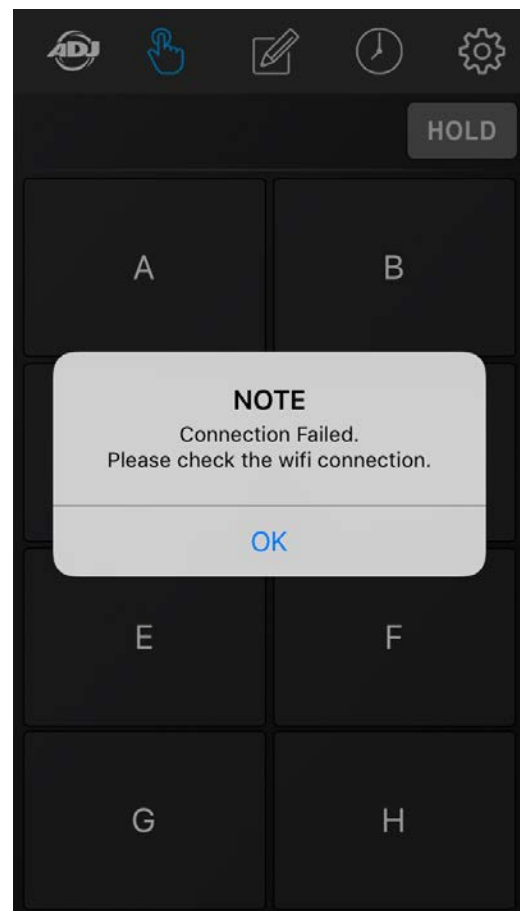
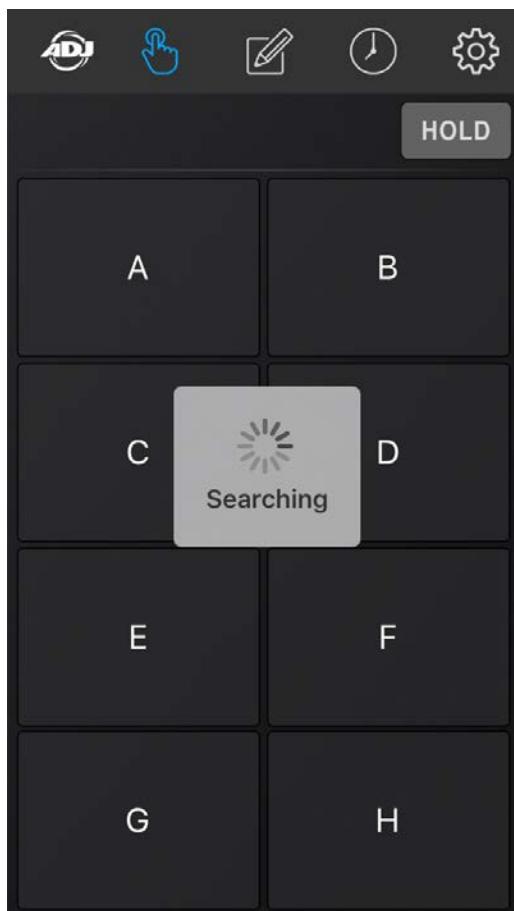
6. Power ON all WIFI PACKS.

7. Open the app and immediately it starts searching for WIFI PACKS.

If no WIFI PACKS are found, an error will display:

“NOTE Connection Failed, Please check the wifi connection.” (See images below)

8. Confirm all your WIFI PACKS are connected to your mobile digital device.

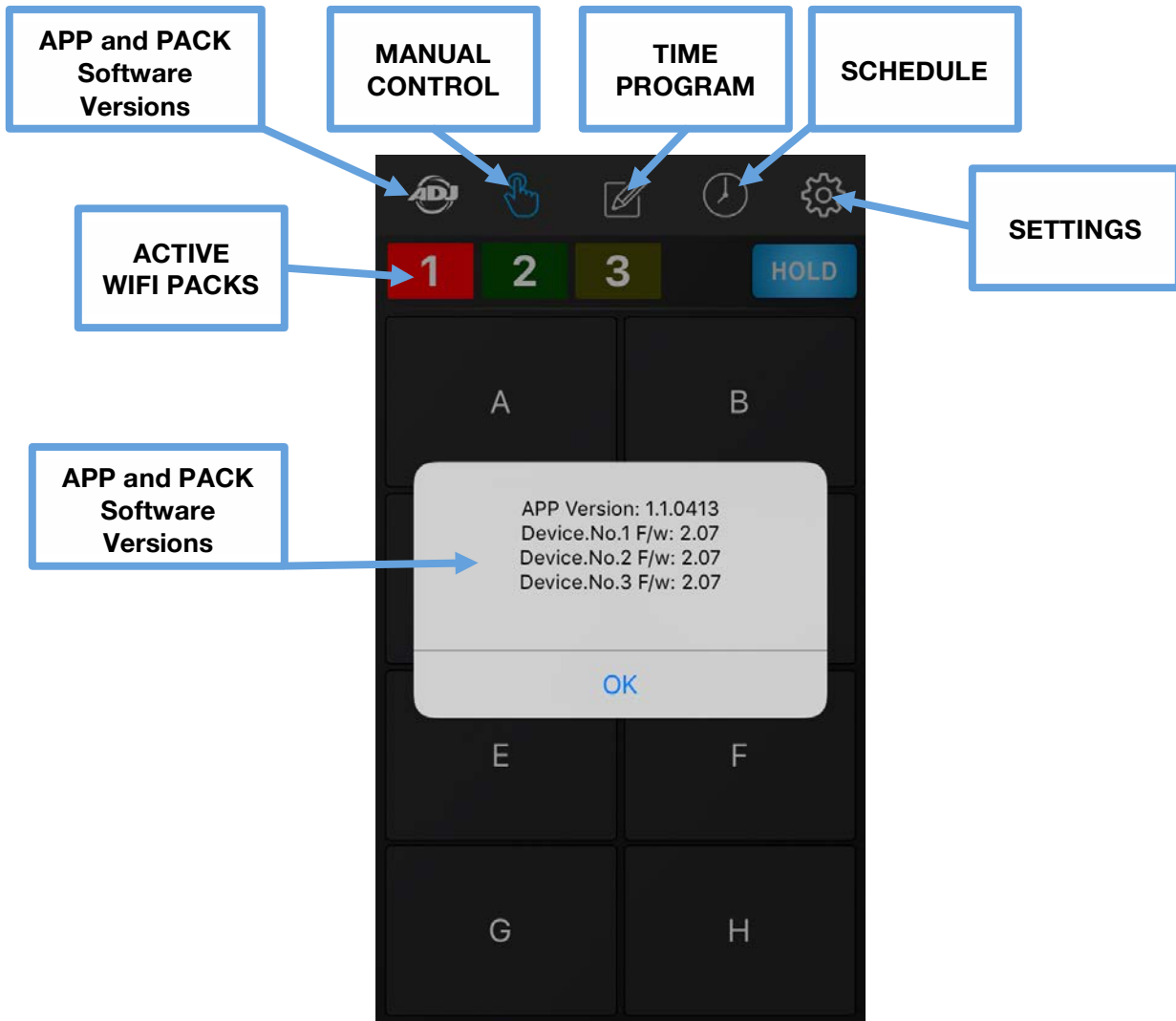


NOTE: TO PREVENT OTHERS FROM ACCESSING YOUR WIFI NETWORK, AND TO PREVENT WIRELESS CONNECTIVITY AND/OR INTERFERENCE ISSUES, IT IS HIGHLY RECOMMENDED TO CHANGE THE WIFI NETWORK NAME AND PASSWORD. SEE RENAME THE WIFI NETWORK and CHANGE THE WIFI PASSWORD SECTIONS FOR MORE DETAILS.

APP SET UP & OVERVIEW [continued]

Below is an overview of the different app icons and their functions. This example illustrates 1 Master and 2 Slave WIFI PACKS connected to the app.

NOTE: (1) Master and up to (3) Slave packs can be connected to a single digital mobile device.



APP and PACK Software Versions - Press and hold to display app and pack software versions.

MANUAL CONTROL - Press to control connected WiFi PACKS manually.

TIME/PROGRAM - Press to setup custom TIME and PROGRAM control settings.

SCHEDULE - Press to setup custom SCHEDULE control settings.

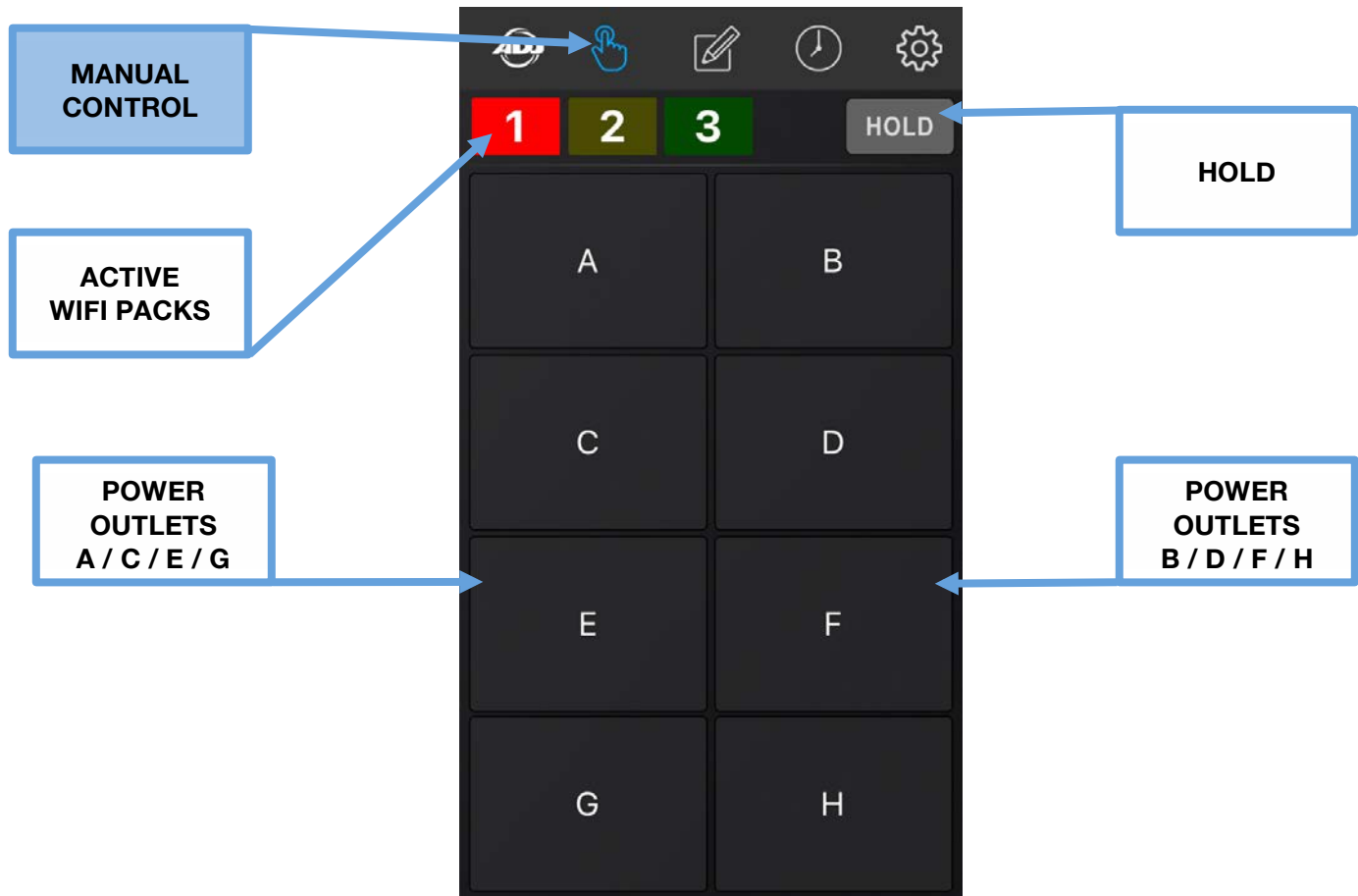
SETTINGS - Press to access and modify multiple app settings.

ACTIVE WIFI PACKS - Press desired icon to switch between connected WIFI PACKS.

APP OPERATION

MANUAL CONTROL

Pressing this icon displays the **MANUAL CONTROL** page where you can easily turn **ON** or **OFF** any of the 8 power outlets (**A-H**) on any connected WIFI PACK manually. As illustrated below, 3 Airstream WIFI PACKS are active and receiving a wireless signal as indicated by the numbered icons at the top of the screen. The first numbered WIFI PACK is always the Master, and additional WIFI PACKS are Slaves. **NOTE: ADDITIONAL CONNECTED PACKS WILL APPEAR AS NUMBERED ICONS (2-4).**



1. To momentarily power ON a device connected to the WIFI PACK, press the corresponding WIFI PACK icon then **press and hold** the corresponding power outlet letter button (**A-H**) of the device.

NOTE: ONLY 1 OUTLET CAN BE ACTIVATED AT A TIME.

2. To power OFF a device, release the corresponding power outlet letter button (**A-H**) of the device.

3. To power ON multiple devices at the same time or to keep any one device powered ON without holding the power outlet letter button, press the **HOLD** button, which will illuminate in blue indicating the **HOLD** feature is active. Now you can toggle any power outlet button between ON and OFF. To remove this function, press the **HOLD** button again, which will no longer illuminate in blue.

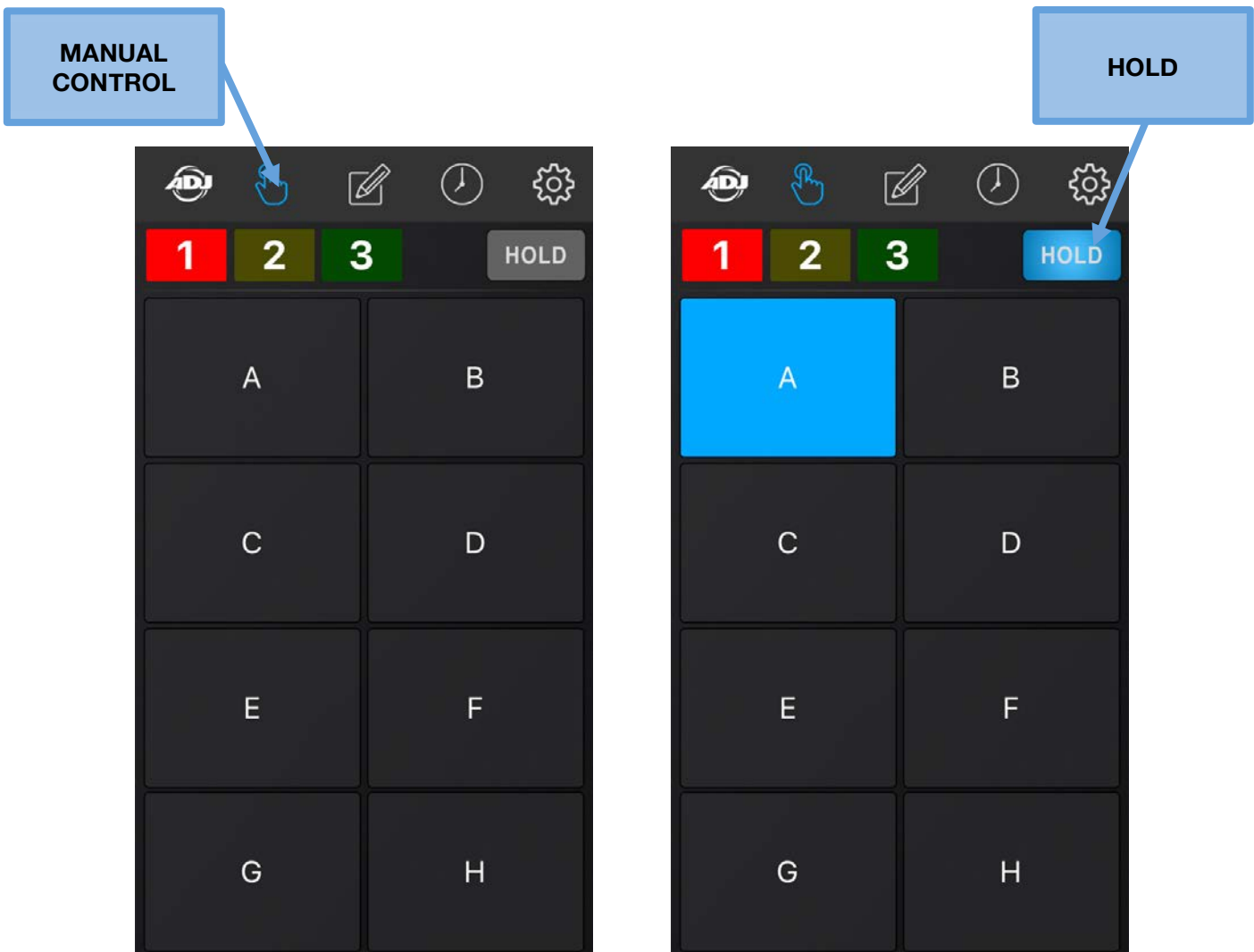
APP OPERATION

MANUAL CONTROL [continued]

You can momentarily or **HOLD** any of the power outlets (**A-H**) on any of the connected WIFI PACKS. As illustrated below, a total of (3) WIFI PACKS (1 master and 2 slave packs) are connected to the Airstream WIFI network. The image below shows the **HOLD** feature engaged on power outlet **A**.

You can also add text labels and photos to each of the power outlets (**A-H**), which provides a more visual representation of the lighting devices you have connected to each WIFI PACK. Please see the **SETTINGS - PHOTO** section in this manual for more details.

NOTE: MANUAL SETTINGS ARE NOT SAVED TO THE WIFI PACK AND THEREFORE WILL BE LOST WHEN POWER IS LOST TO THE WIFI PACK!

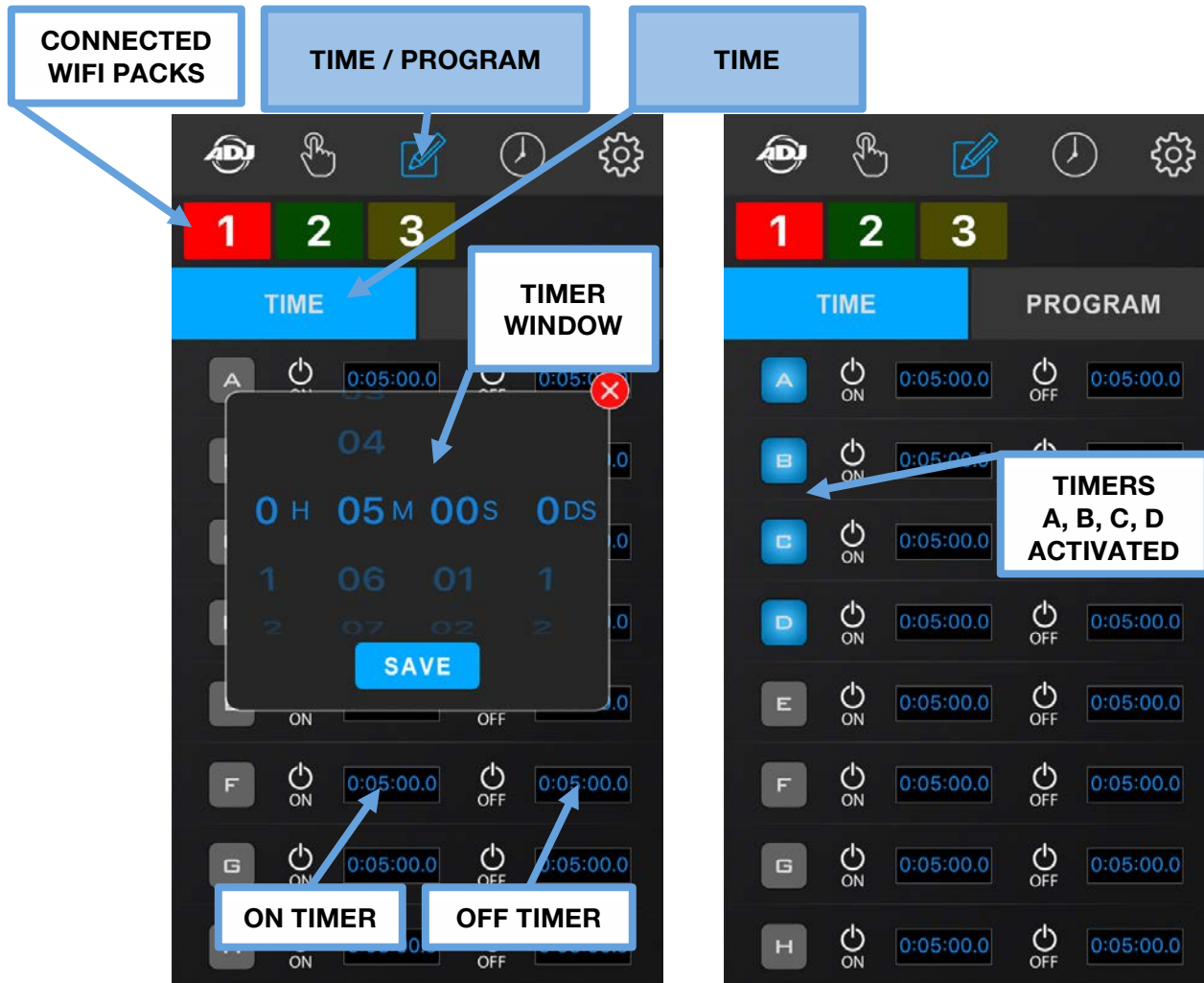


APP OPERATION

TIME / PROGRAM

Pressing this icon displays the **TIME** and **PROGRAM** pages. Pressing the **TIME** tab lets you to create custom **ON** and **OFF** timer settings for each power outlet (**A-H**) of any connected WIFI PACK.

NOTE: DEFAULT TIMER SETTINGS ARE 5 MINUTES ON AND 5 MINUTES OFF.

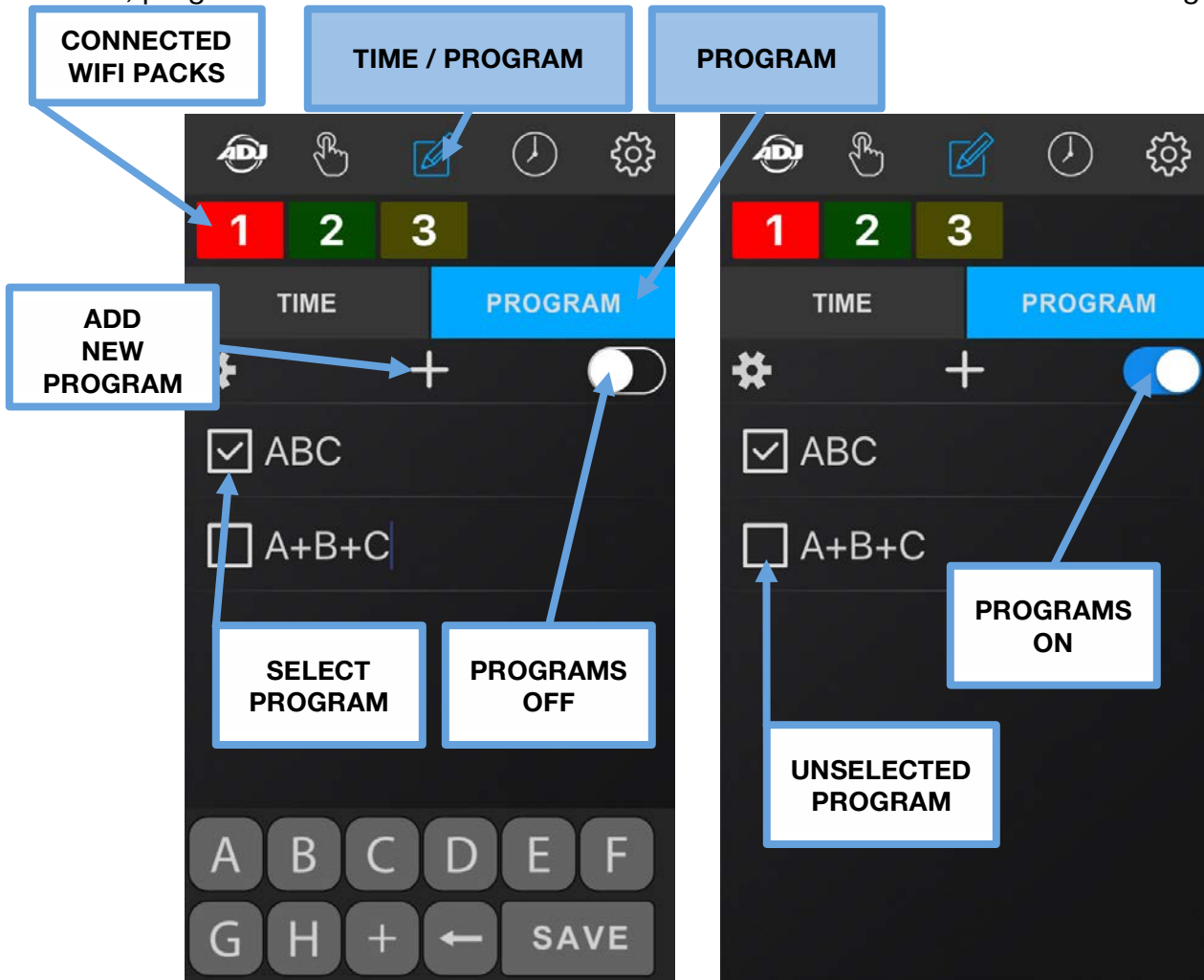


1. Press a desired **WIFI PACK** button, then press the **TIME** button that displays the timer settings.
 2. Press the **ON Timer** next to the desired outlet letter (**A-H**) and a **Timer Window** will open where you can set the **ON** time for each outlet, then press **SAVE**. (See image above left)
 3. Press the **OFF Timer** next to the same selected outlet letter (**A-H**) and another **Timer Window** will open where you can set the **OFF** time for each outlet, then press **SAVE**. (See image above left)
- NOTE: YOU CAN SET HOURS, MINUTES, SECONDS, AND DECISECONDS (DS) FOR THE ON / OFF TIMER SETTINGS. RUNNING TIMES CAN VARY FOR EACH CONNECTED DEVICE; THEY DO NOT NEED TO BE THE SAME.**
4. Now press the selected outlet letter button (**A-H**) and the letter will illuminate blue indicating the timer settings are now activated. In the example (image above right), buttons **A-D** are illuminated blue meaning the timers for those outlets are active. To deactivate an outlet timer, press the outlet letter button again and the letter will no longer be illuminated blue indicating it is now deactivated.

APP OPERATION

TIME / PROGRAM [continued]

Pressing this icon displays the **TIME** and **PROGRAM** pages. Pressing the **PROGRAM** tab lets you to create custom running programs for each power outlet (**A-H**) of any connected WIFI PACK. Programs will use the timer settings set for each power outlet. (See previous section) If no custom timer settings are set, programs will use the default **5 minutes ON** and **5 minutes OFF** timer settings.



1. Press a desired **WIFI PACK** button, then press the **PROGRAM** button that displays the program settings.
2. Press the **PLUS** button to add a **NEW PROGRAM** and a white **BOX** will appear without any letters.
3. Press the space next to the white **BOX** and use the pop up keyboard to type in the desired outlet letters (**A-H**) to create a program with and then press **SAVE**.
4. Multiple outlet letters can be selected for a program for example **ABC**. In this scenario, the program will start with powering outlet **A** ON per its timer settings, then power outlet **B** ON per its timers settings, and then power outlet **C** ON per its timer settings. This cycle will repeat indefinitely until you toggle off the **PROGRAM ON/OFF** switch (see step 7 on the next page), or per the **WIFI PACK SCHEDULE**. (See SCHEDULE ICON section for more details)

APP OPERATION

TIME / PROGRAM [continued]

5. Multiple outlet letters can also be selected for a program however with a **plus sign (+)** in between each outlet letter for example **A+B+C**. In this scenario, the program will start powering all outlet letters **A**, **B**, and **C** at the same time. This cycle will repeat indefinitely until you toggle off the **PROGRAM ON/OFF** switch (see step 7 below), or per the **WIFI PACK SCHEDULE**.

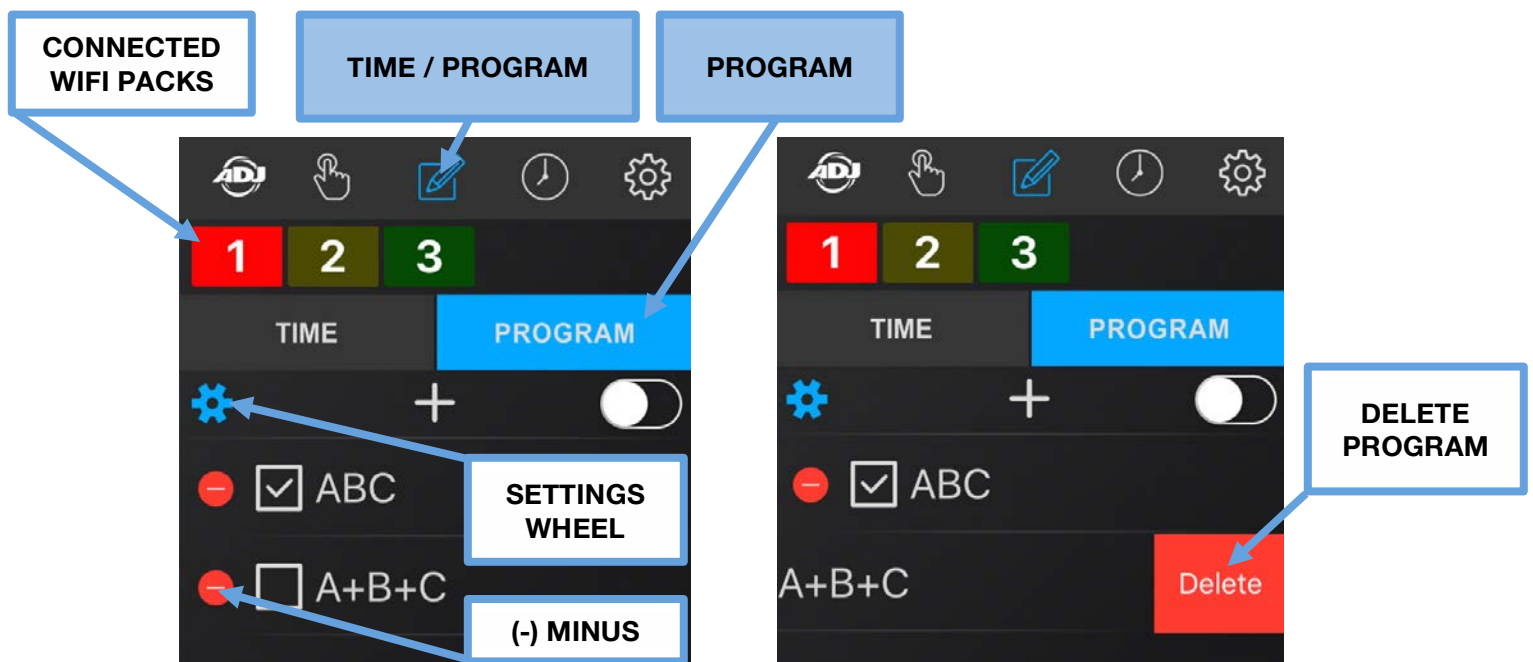
(See SCHEDULE ICON section for more details)

6. To cue a program to run, press the empty white box next to it and a check mark will display indicating the program is now cued to run.

7. Toggle the small **PROGRAM ON/OFF** switch located in the upper right to illuminate it in blue indicating programs are ON, and again to illuminate it in black indicating programs are OFF.

8. To **DELETE** a program, press the white color settings wheel on the left side under the **TIME** button, which will illuminate blue. Then press the red minus (-) icon and then press the red **DELETE** button.

(See images below)



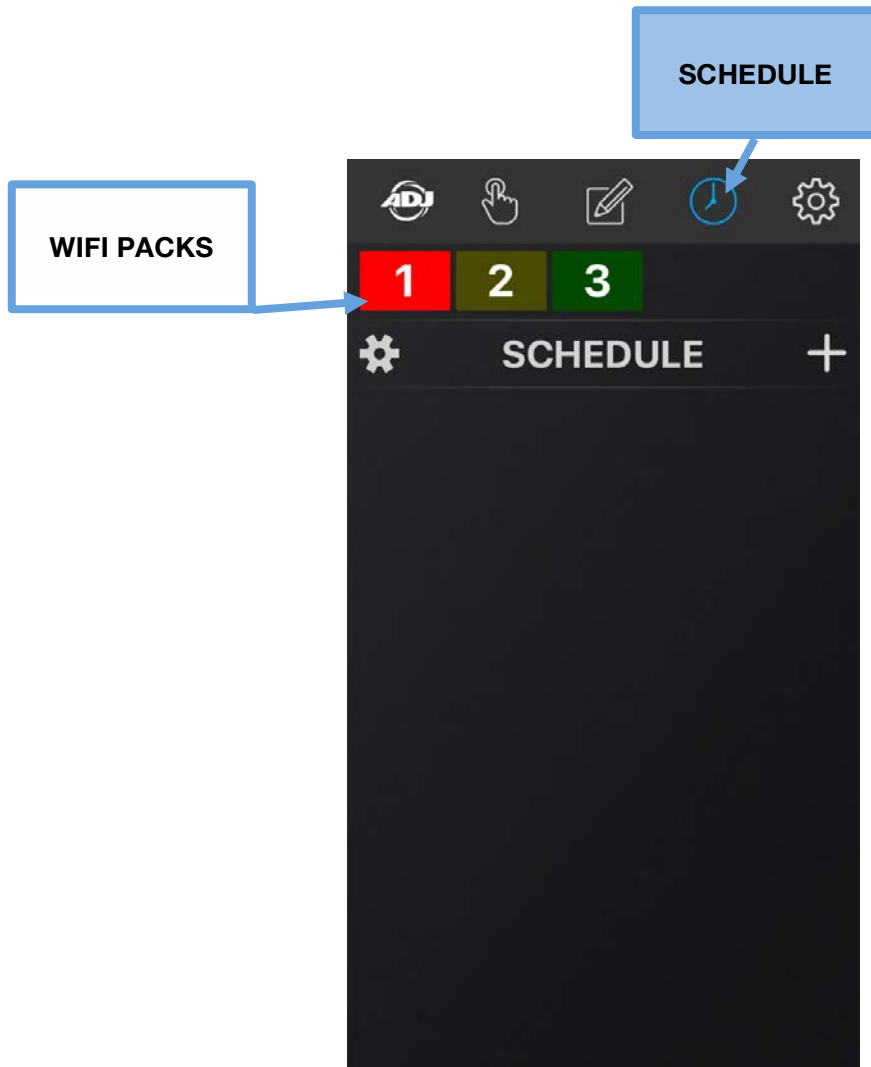
NOTE: PROGRAMS WILL RUN INDEFINITELY UNTIL THEY ARE SWITCHED OFF, OR PER THE WIFI PACK SCHEDULE. (See SCHEDULE ICON section for more details)

APP OPERATION

SCHEDULE

Pressing this icon displays the **SCHEDULE** page where you can create a custom **ON/OFF Schedule** for specific **Times** and **Days** of the week for each connected WIFI PACK.

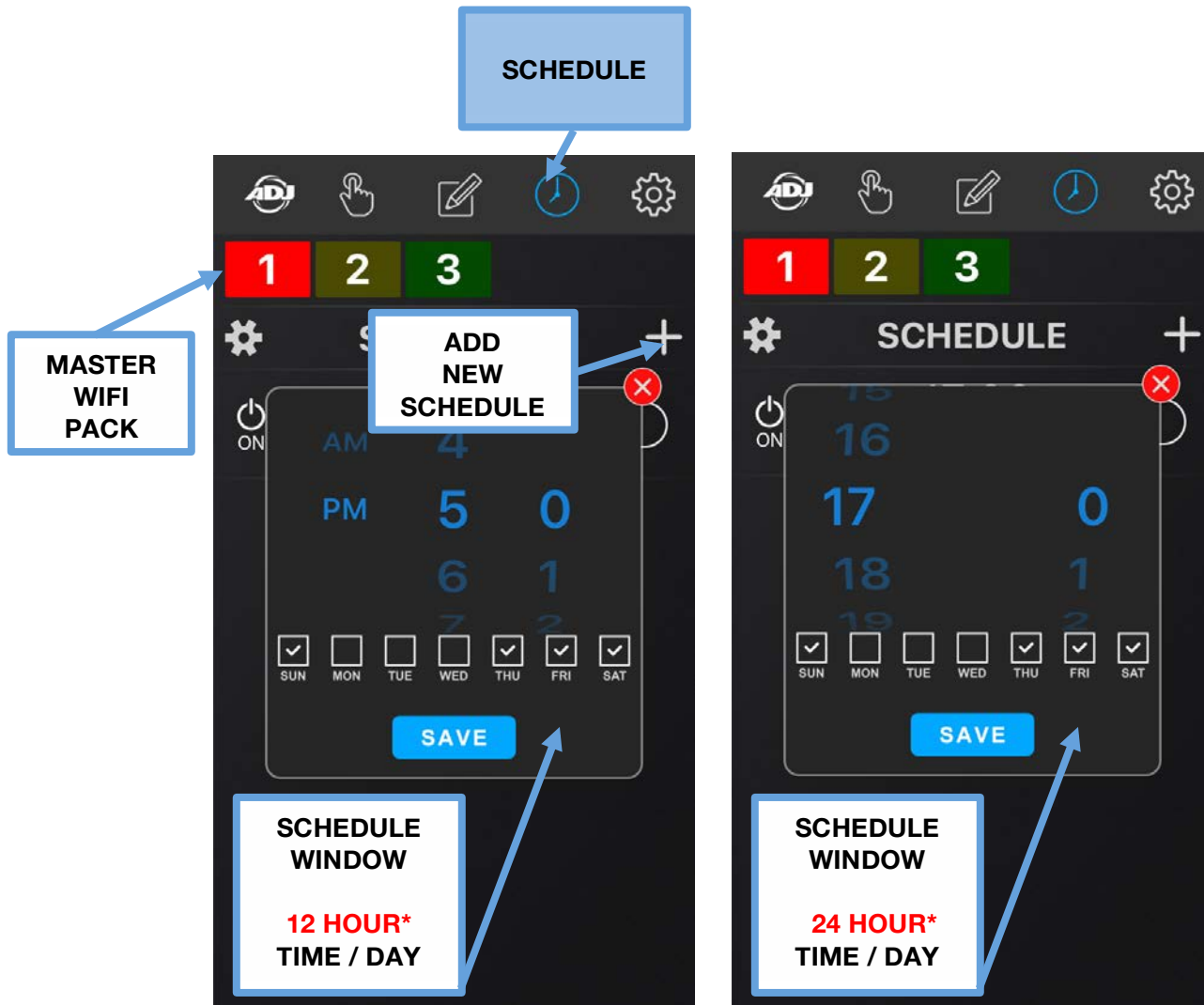
NOTE: THERE MUST BE SAVED WIFI PACK PROGRAMS IN ORDER TO CREATE A SCHEDULE.
(See **TIME / PROGRAM ICON** sections)



APP OPERATION

SCHEDULE [continued]

The example below illustrates a **SCHEDULE** for the master WIFI PACK #1.

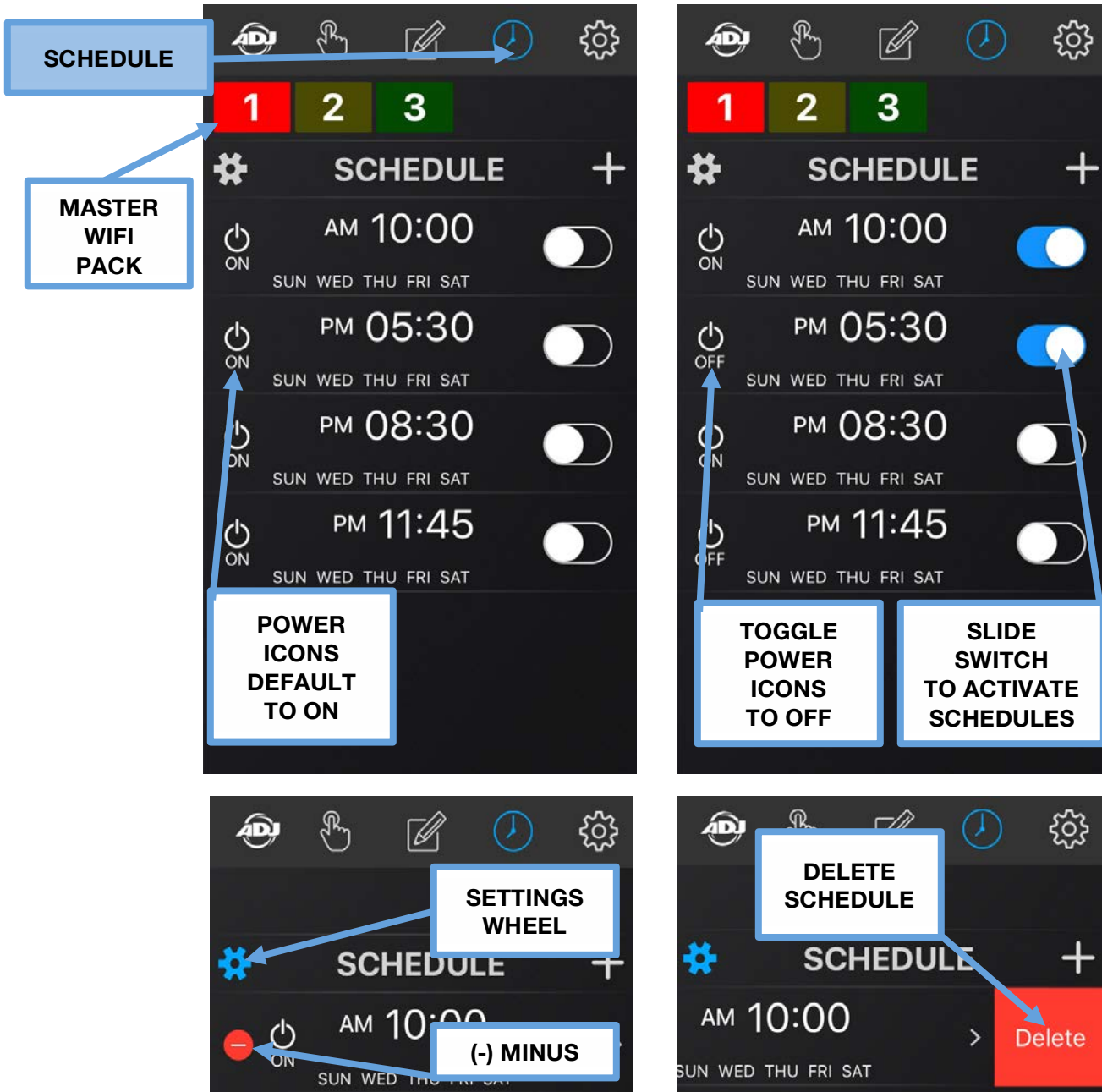


1. Make sure you have set the desired **TIMER** and **PROGRAM** settings for each power outlet (A-H) on each connected WIFI PACK in your network, and each desired **PROGRAM** is turned **ON**. (See previous sections for **TIMER** and **PROGRAM** setting details)
2. To create a new **ON SCHEDULE**, press the desired WIFI PACK and then press the **plus sign (+)** to open the **Schedule Window**, which will display the time in 12-HOUR (AM/PM) or 24-HOUR format. **NOTE: HOUR FORMAT CAN BE TOGGLED ON THE SETTINGS PAGE (See SETTINGS section)**
3. Select the **Time** and **Days** of the week for the **ON SCHEDULE** and push **SAVE**.
4. To create a new **OFF SCHEDULE**, press the desired WIFI PACK and then press the **plus sign (+)** to open the **Schedule Window**, which will display the time in 12-HOUR (AM/PM) or 24-HOUR format. **NOTE: HOUR FORMAT CAN BE TOGGLED ON THE SETTINGS PAGE (See SETTINGS section)**
5. Select the **Time** and **Days** of the week for the **OFF SCHEDULE** and push **SAVE**.

APP OPERATION

SCHEDULE [continued]

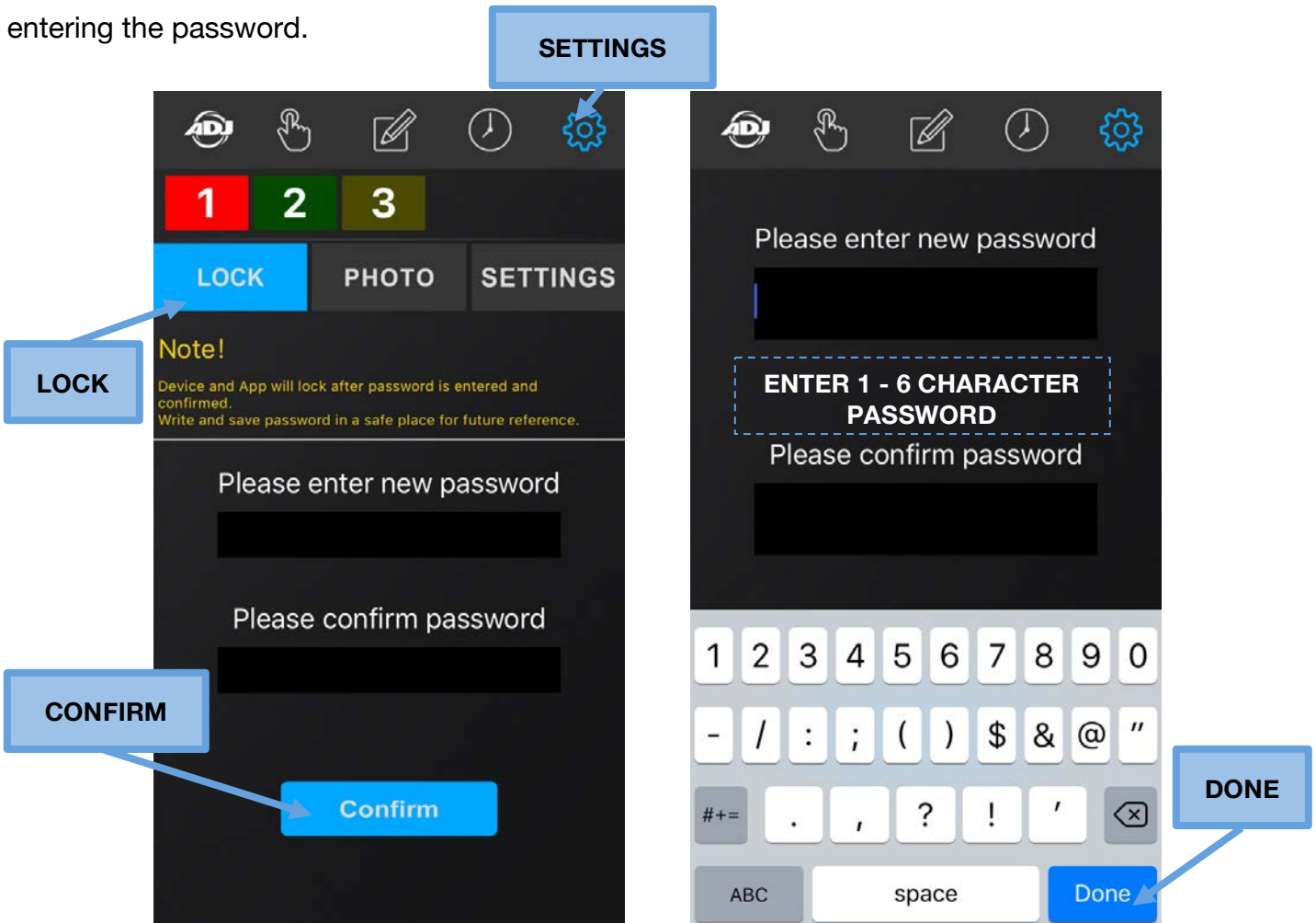
6. **SCHEDULES** will always default to **ON** as indicated by the power icon. (See below left)
7. Toggle power icons from **ON** to set **OFF SCHEDULES**. (See below right)
8. To activate a **SCHEDULE** slide switch towards the right and it will turn blue. (See below top right)
9. To deactivate a **SCHEDULE** slide switch towards the left and it will turn black. (See below bottom right)
10. To **DELETE** a **SCHEDULE**, press the white color settings wheel on the left side of the word **SCHEDULE**, which will illuminate blue. Then press the minus (-) icon and then press the red **DELETE** button. (See below)



APP OPERATION

SETTINGS - LOCK

Pressing this icon displays the **SETTINGS** page and pressing the **LOCK** tab lets you set a password for the **AirstreamWiFi** app. Passwords can be of any combination of at least **1 to a maximum of 6 characters**. After you lock the app, NO changes can be made to any of the app settings without first entering the password.



1. Press the top bar below the text **“Please enter new password”** and use the pop up keyboard to enter your desired **1 - 6 character** password into the bar.
2. Press the bottom bar below the text **“Please confirm password”** and use the pop up keyboard to enter the exact same **1 - 6 character** password into the bar.
3. After successfully entering the desired password, press **DONE** button. (See image above right)
4. To lock the app press the **Confirm** button. (See image above left)

NOTE: DEVICE AND APP WILL LOCK ONLY AFTER THE PASSWORD IS CONFIRMED.

WRITE AND SAVE PASSWORD IN A SAFE PLACE FOR FUTURE REFERENCE.

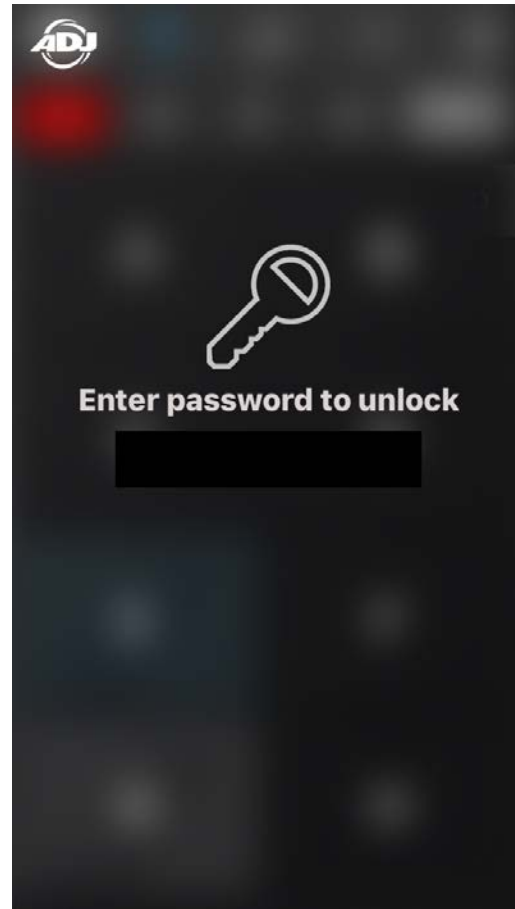
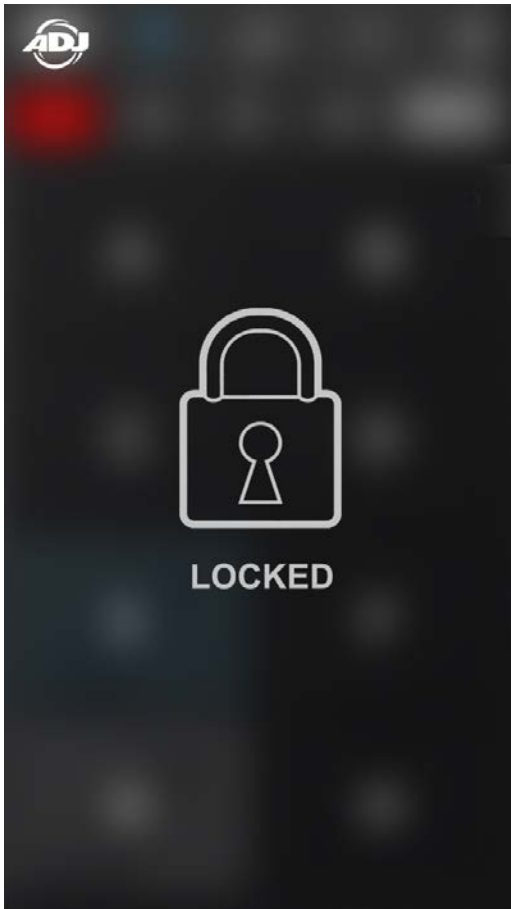
NOTE: PASSWORD MUST BE 1-6 CHARACTERS.

APP OPERATION

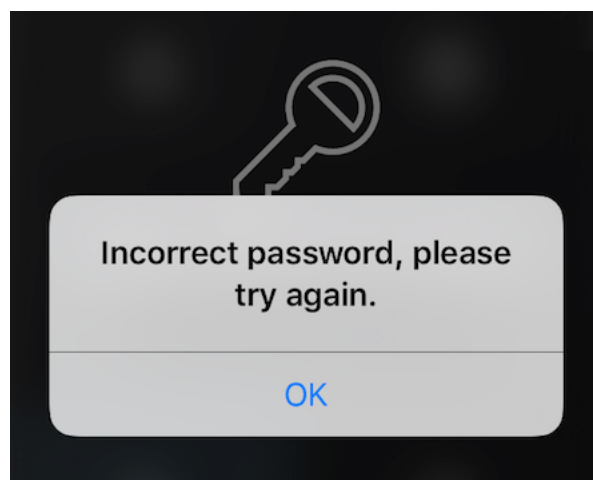
SETTINGS - LOCK [continued]

When the app is locked, the screen image below left is displayed.

1. To unlock the app, press the LOCK icon and the screen image below right is displayed.
2. Enter your **1 - 6 character** password and the app will unlock.



3. If you enter an incorrect password, an error will display. (See image below)



APP OPERATION

SETTINGS - LOCK [continued]

**IF YOU FORGET THE PASSWORD OR ARE NOT ABLE TO ACCESS THE APP,
CONTACT ADJ CUSTOMER SUPPORT TO REQUEST A MASTER CODE.**

ADJ SERVICE USA - Monday - Friday 8:00am to 4:30pm PST

Voice: 800-322-6337

Fax: 323-532-2941

E-mail: support@americandj.com

ADJ GROUP SERVICE EUROPE - Monday - Friday 08:30 to 17:00 CET

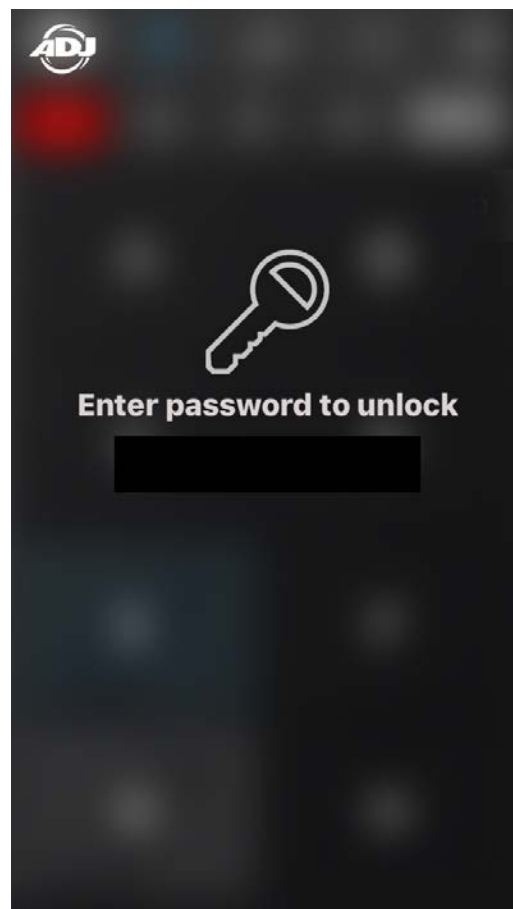
Voice: +31 45 546 85 30

Fax: +31 45 546 85 96

E-mail: support@adjgroup.eu

1. Enter the Master Code and the app should unlock.
2. If not, please contact ADJ Customer Support for further instructions.
3. To lock the app again enter another **1 - 6 character** password as explained in previous section.

NOTE: WRITE AND SAVE PASSWORD IN A SAFE PLACE FOR FUTURE REFERENCE.

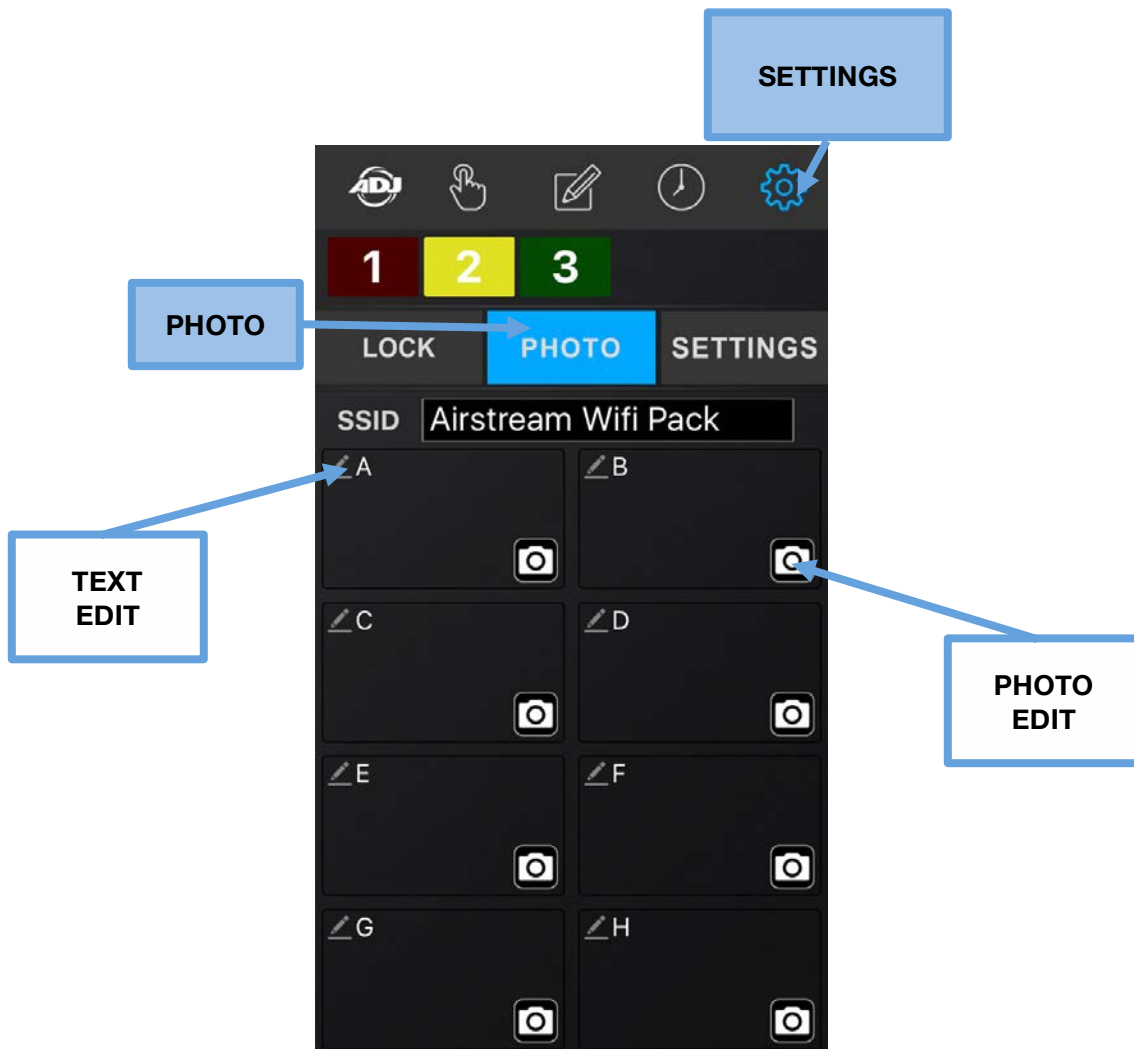


APP OPERATION

SETTINGS - PHOTO

Pressing this icon displays the **SETTINGS** page and pressing the **PHOTO** tab lets you add a custom 9-character **TEXT** label and **PHOTO** to each power outlet button (**A-H**) of a connected WIFI PACK (**1-4**). These text labels and photos will replace the lettered squares (**A-H**) on the **MANUAL CONTROL** page. You can add a text label and a photo or add only a text label or add only a photo. Photos can be new from the camera or existing photos from the library of the controlling mobile device.

NOTE: WIFI PACK(s) MUST BE CONNECTED TO MOBILE DIGITAL DEVICE TO ADD TEXT AND PHOTOS. TEXT AND PHOTOS CANNOT BE ADDED WITHOUT WIFI PACKS CONNECTED.



APP OPERATION

SETTINGS - PHOTO [continued]

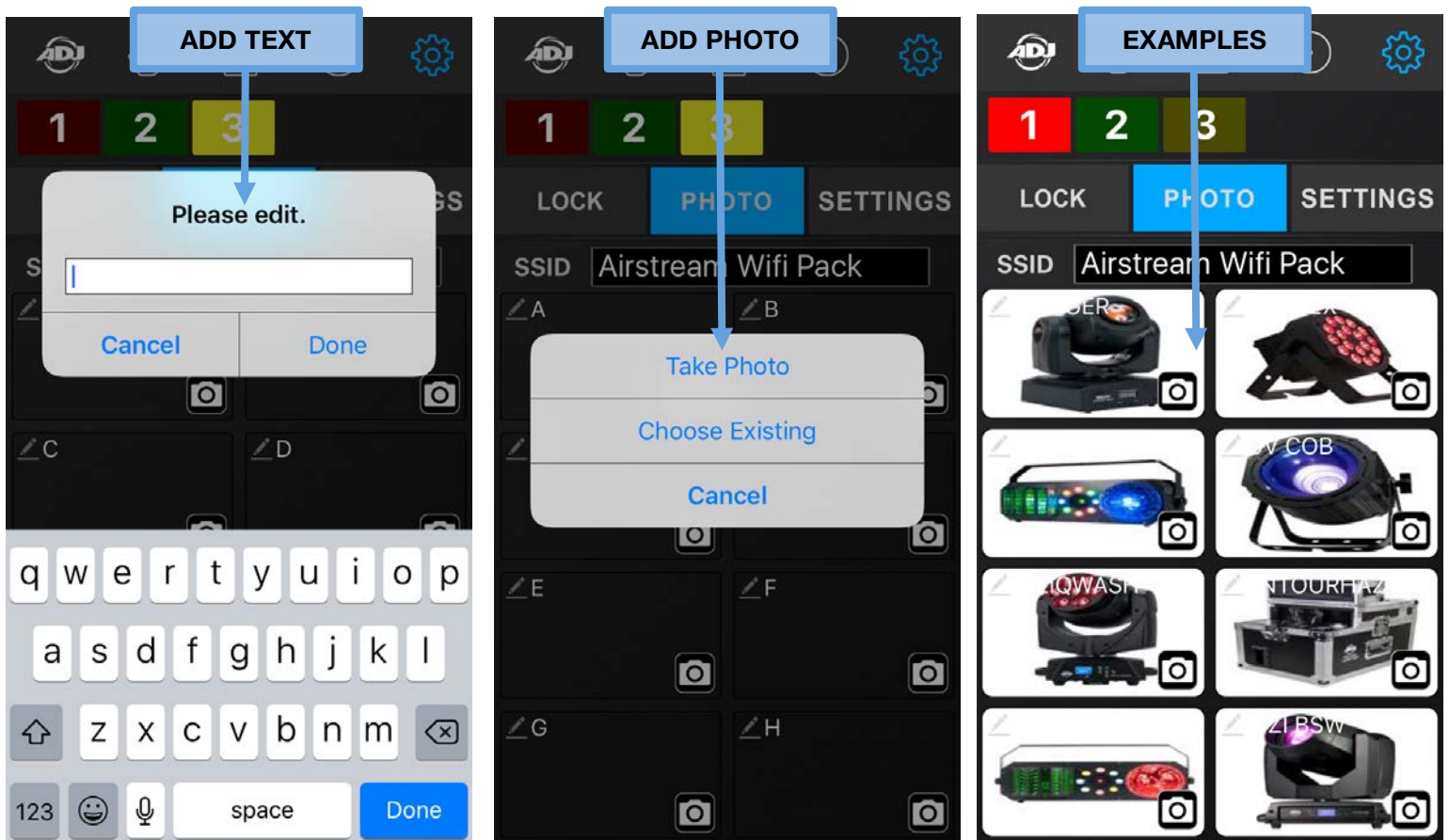
To add a **TEXT** label to a power outlet button, WIFI PACKS must be connected to your WiFi Network.

1. Press text icon in upper left corner of a power outlet button to open a text edit window.
2. Using the pop up keyboard enter a text label of up to **9-characters** and press **DONE**. (See below Left)

To add a **PHOTO** to a power outlet button, WIFI PACKS must be connected to your WiFi Network.

1. Press photo icon in upper right corner of a power outlet button to open a photo selection window.
2. Select **Take Photo** to use mobile digital device camera or select **Choose Existing** to select photo from mobile digital device library. (See below Center)

Example of **TEXT** labels and **PHOTOS** for each power outlet button (**A-H**). (See below Right)



APP OPERATION

SETTINGS - PHOTO [continued]

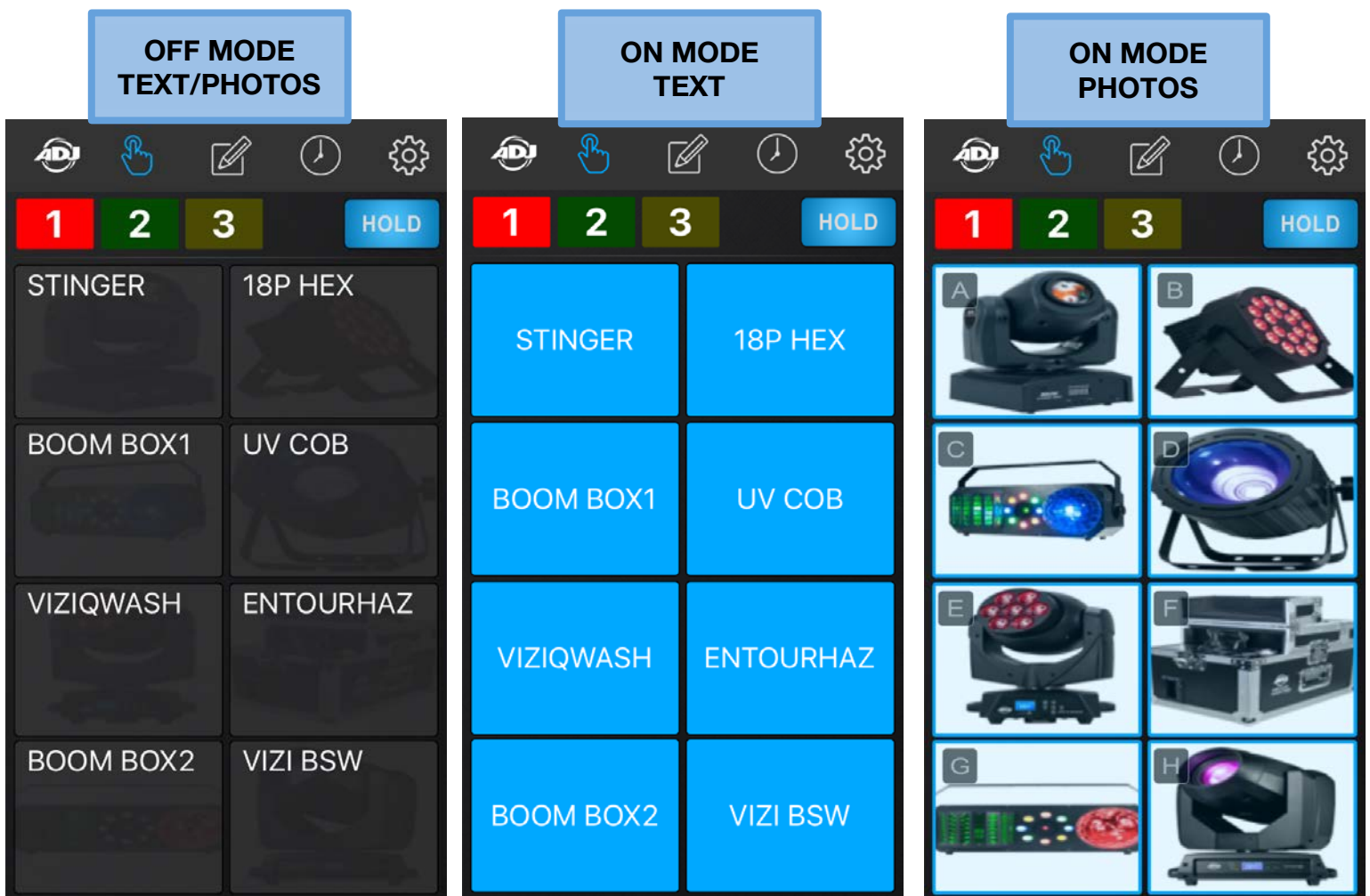
After adding **TEXT** labels and/or assigning **PHOTOS** to each power outlet button of a connected WIFI PACK, the **MANUAL CONTROL** page will now no longer display the blank squares with letters **A-H**.

TEXT labels will now display for each power outlet button in the **OFF** mode.

TEXT labels will now illuminate blue for each power outlet button in the momentary or **HOLD** mode.

PHOTOS will now display for each power outlet button in the momentary or **HOLD** mode.

(See images below)

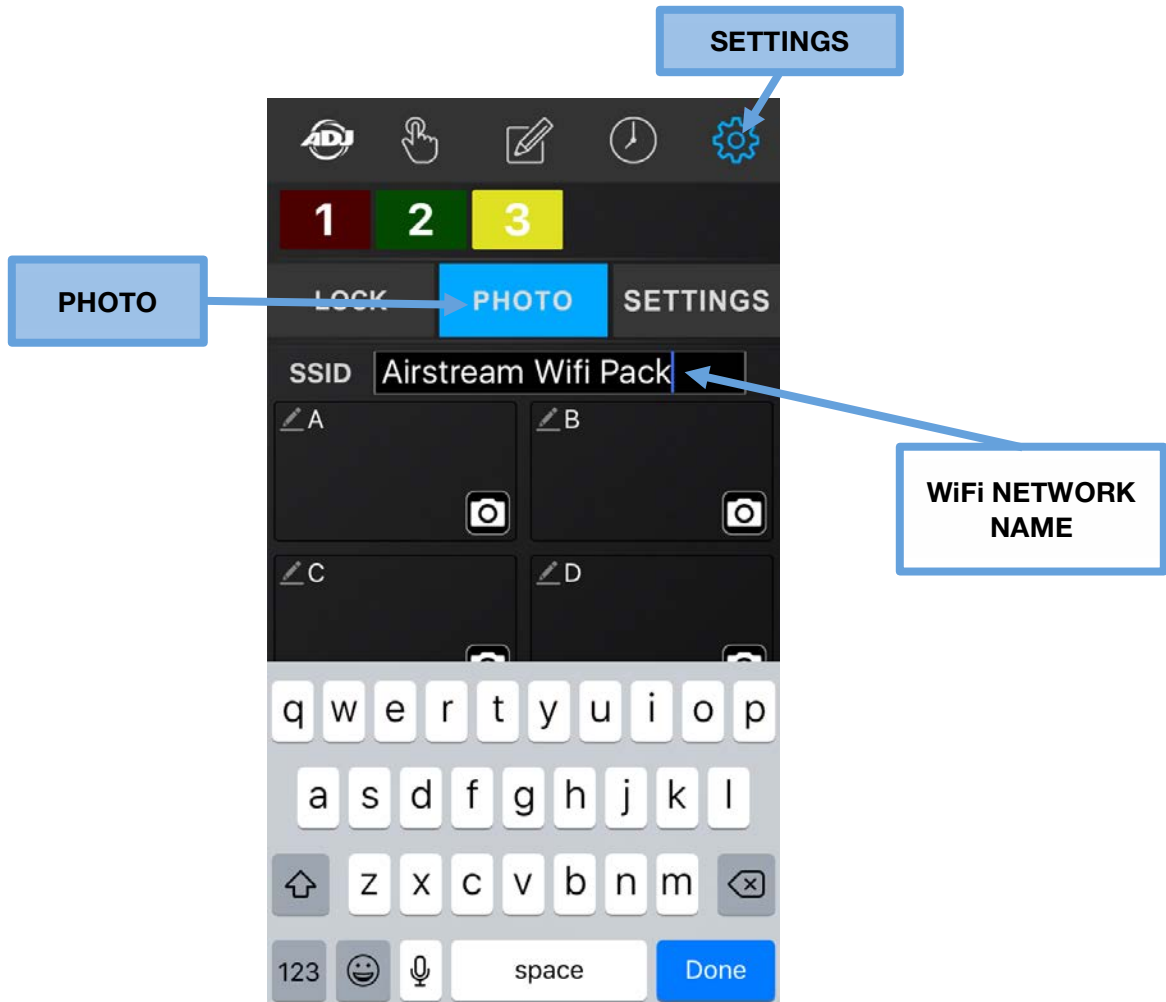


APP OPERATION

SETTINGS - PHOTO [continued] - RENAMING THE WiFi NETWORK NAME

Pressing this icon displays the **SETTINGS** page and pressing the **PHOTO** tab lets you also change the WiFi Network Name (SSID).

NOTE: THE WIFI NETWORK NAME MUST BE BETWEEN 8 - 32 CHARACTERS.



1. Press the bar next to the text **“SSID”**.
 2. Use the pop up keyboard to rename the default WiFi network name **Airstream Wifi Pack**.
- NOTE: THE WIFI NETWORK NAME MUST BE BETWEEN 8 - 32 CHARACTERS.**
3. Press **DONE** and the new name will appear.
 4. Power the Master WIFI PACK OFF / ON for the new WiFi network name to take effect.

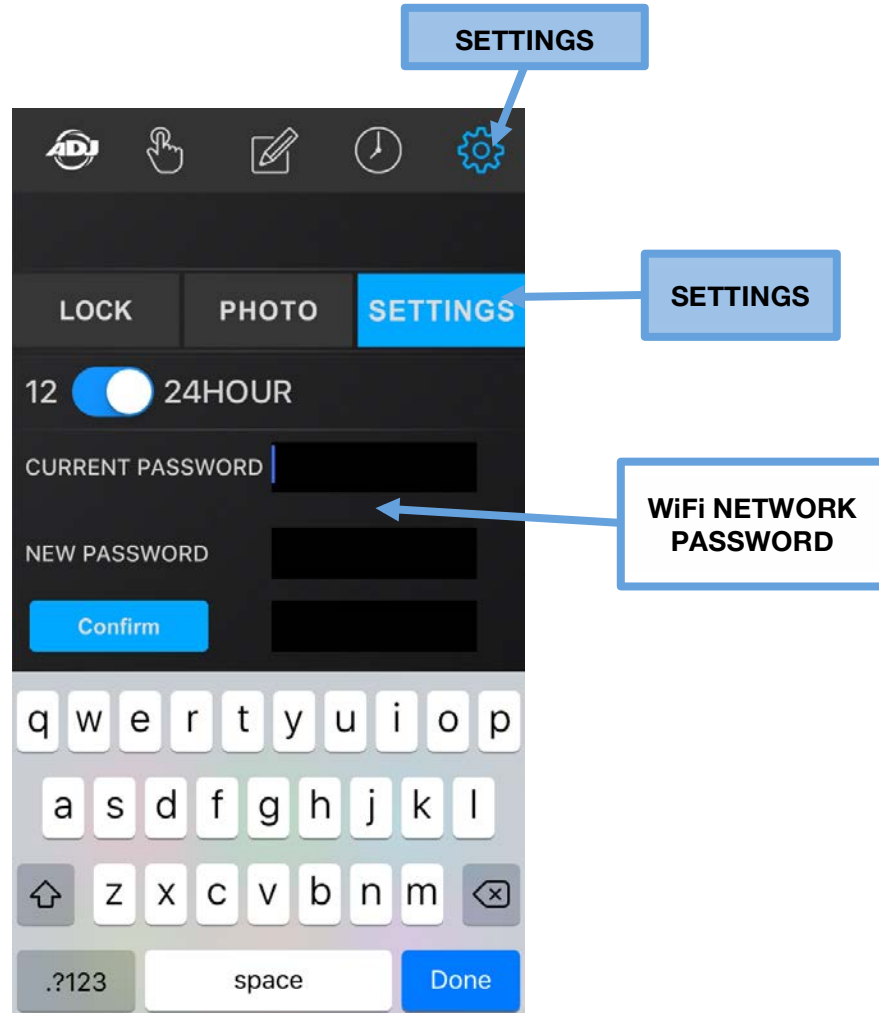
NOTE: TO PREVENT OTHERS FROM ACCESSING YOUR WIFI NETWORK, AND TO PREVENT WIRELESS CONNECTIVITY AND/OR INTERFERENCE ISSUES, IT IS HIGHLY RECOMMENDED TO CHANGE THE WIFI NETWORK NAME AND PASSWORD.

APP OPERATION

SETTINGS - SETTINGS [continued] - CHANGE THE WiFi NETWORK PASSWORD

Pressing this icon displays the **SETTINGS** page and pressing the **SETTINGS** tab lets you change the WiFi Network Password. The default password is **airstreamwifi**.

NOTE: THE WIFI NETWORK PASSWORD MUST BE BETWEEN 8 - 32 CHARACTERS.



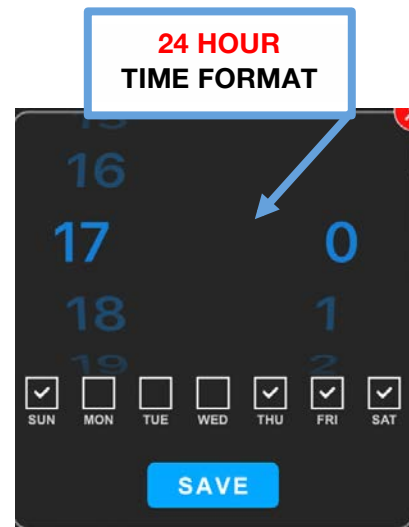
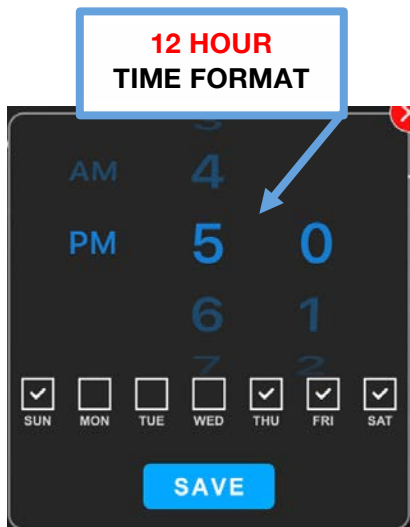
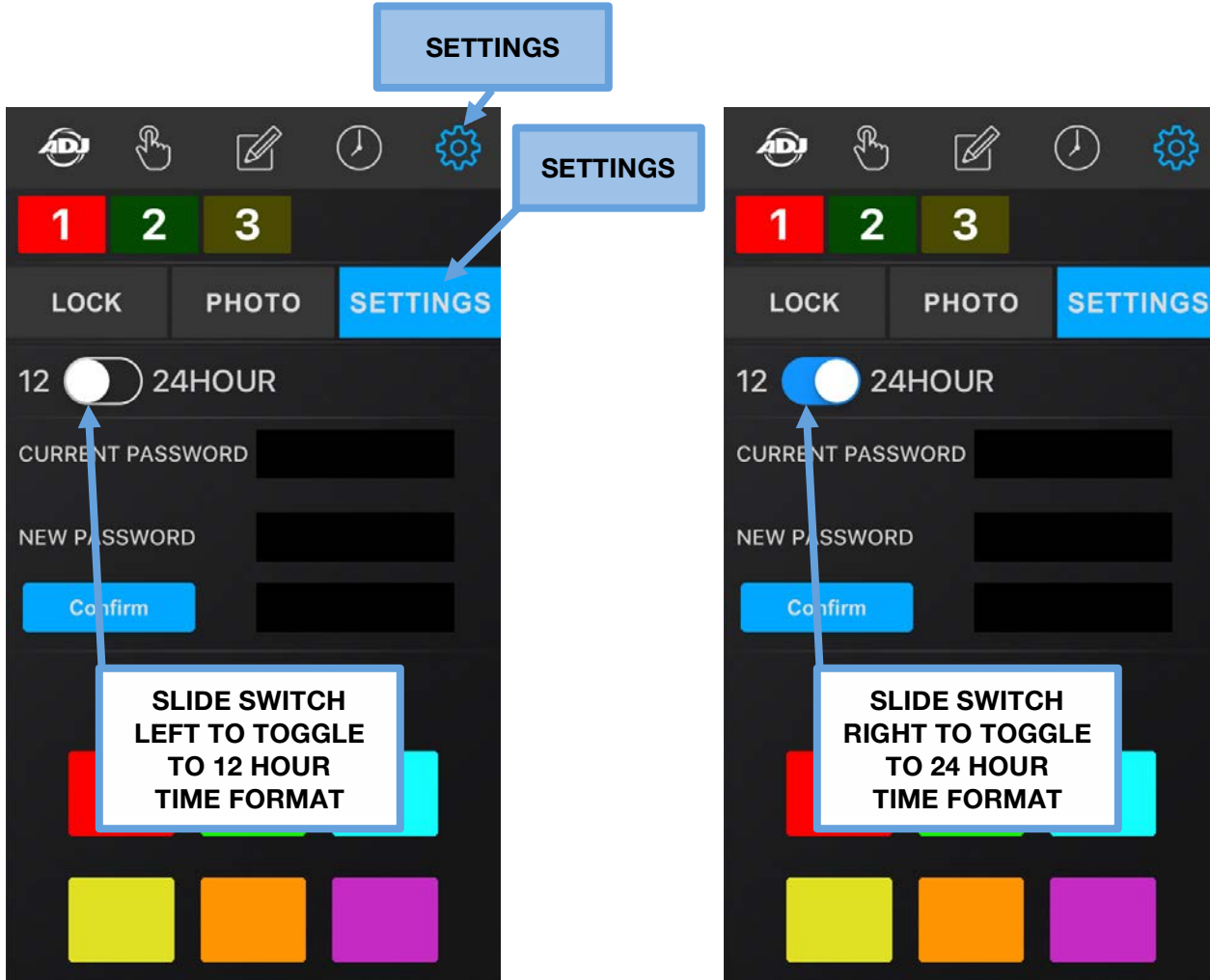
1. Press the bar next to the text **“CURRENT PASSWORD”** and enter the current WiFi Password.
2. Press the bar next to the text **“NEW PASSWORD”** and enter your new desired password.
3. Finally press the bar next to the text **“Confirm”** and reenter your new password.
4. Now press the **Confirm** button.
5. Power the Master WIFI PACK OFF / ON for the new WiFi network password to take effect.

NOTE: TO PREVENT OTHERS FROM ACCESSING YOUR WIFI NETWORK, AND TO PREVENT WIRELESS CONNECTIVITY AND/OR INTERFERENCE ISSUES, IT IS HIGHLY RECOMMENDED TO CHANGE THE WIFI NETWORK NAME AND PASSWORD.

APP OPERATION

SETTINGS - SETTINGS [continued] - TIME FORMAT

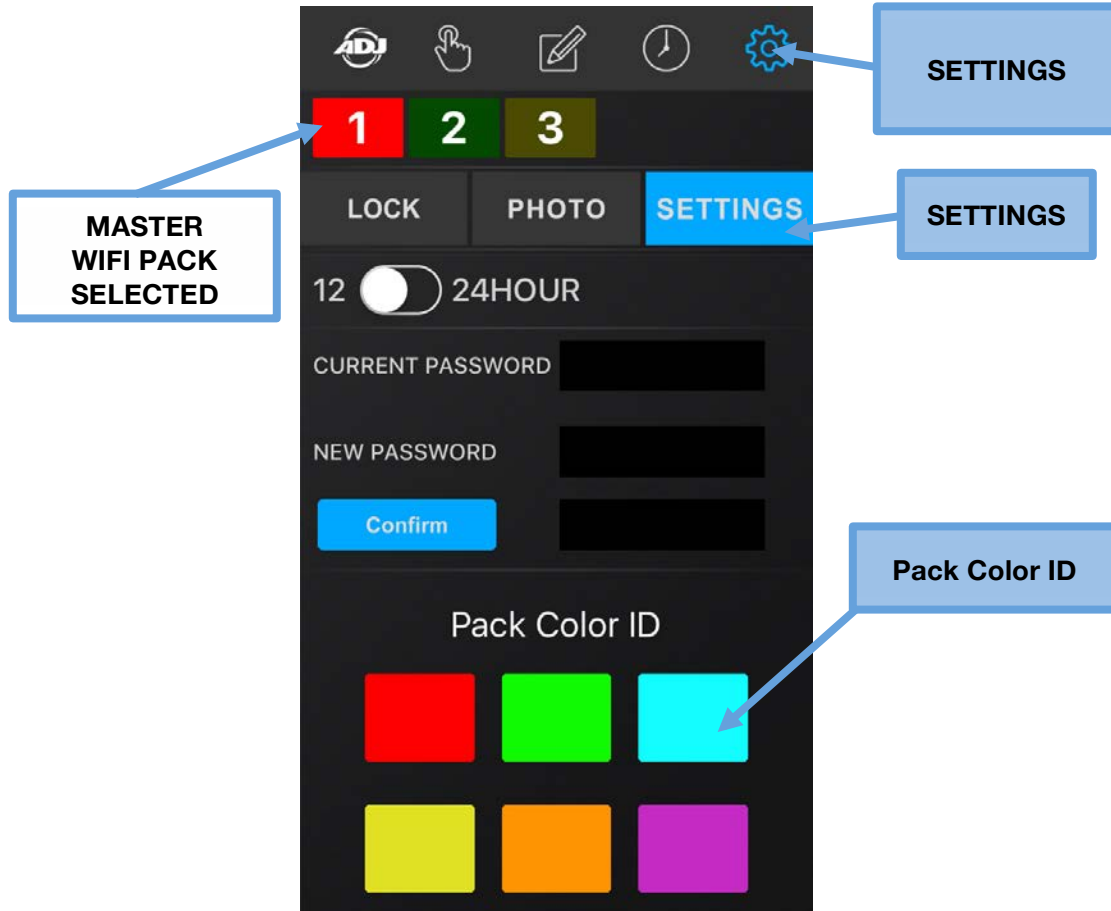
Pressing this icon displays the **SETTINGS** page and pressing the **SETTINGS** tab lets you change the time format used in the app. You can select **12-Hour (AM/PM)** or **24-Hour (Military)** format.



APP OPERATION

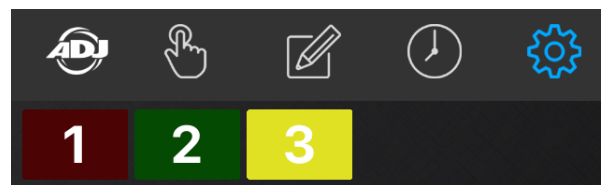
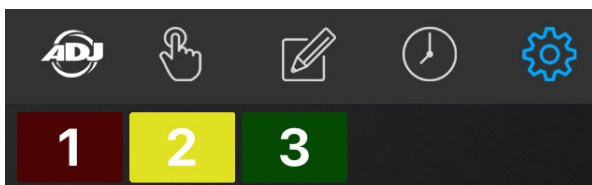
SETTINGS - SETTINGS [continued] - PACK COLOR ID

Pressing this icon displays the **SETTINGS** page and pressing the **SETTINGS** tab lets you change the **Pack Color ID**. You can select 1 of 6 colors (see below) for each connected WIFI PACK.



1. Press the desired WIFI PACK icon so it is highlighted. (See Red number 1 WIFI PACK above)
2. Press the desired color from the **Pack Color ID** grid to assign to the WIFI PACK. (See above)
3. Repeat these steps for each WIFI PACK connected to your WiFi Network.
4. Use the **PACK COLOR ID AND OUTLET LIST** in the back of this manual to keep track of your packs.

NOTE: ALTHOUGH EACH CONNECTED WIFI PACK HAS A NUMBER 1-4 WITH 1 ALWAYS BEING THE MASTER PACK, PACKS 2, 3, and 4 MAY NOT ALWAYS CONNECT TO THE APP IN THE EXACT SAME ORDER. (See example below) THEREFORE IT IS STRONGLY SUGGESTED TO ASSIGN A COLOR TO EACH CONNECTED WIFI PACK, AND USE THE PACK COLOR ID AND OUTLET LIST IN THE BACK OF THIS MANUAL.



TROUBLE SHOOTING TIPS

Mobile Digital Device Does Not See the Airstream WiFi Pack Network

1. Confirm your mobile digital device WiFi is ON and the master WIFI PACK is in Master mode.
2. Power the Master Airstream WiFi Pack OFF / ON, then power ON remaining Slave WiFi Packs.
3. Confirm your mobile digital device sees the Airstream WiFi Pack network.
4. If not, repeat step 1 above.
5. If not, close the Airstream WiFi app and restart and wait to see if the WiFi connection is restored.
6. If none of these solutions work, please contact ADJ Customer Service.

Mobile Digital Device Looses Connection with WiFi Pack(s)

1. Wait until the spinning Searching wheel stops to see if the WiFi connection is restored.
2. Confirm your mobile digital device WiFi is ON and the master WIFI PACK is in Master mode.
3. Confirm your mobile digital device is connected to the correct WiFi Network name.
4. If not, close the Airstream WiFi app and restart and wait to see if the WiFi connection is restored.
5. If not, power the Master Airstream WiFi Pack OFF / ON then power ON remaining Slave WiFi Packs.
6. If none of these solutions work, please contact ADJ Customer Service.

WiFi Network Name and Password Reset

1. Switch OFF the Master WIFI PACK and make sure the Master/Slave switch is set to MASTER.
2. Switch the WIFI PACK ON, wait 2 seconds, and then toggle the Master/Slave switch at least 3-4 times (master to slave, master to slave, master to slave) within 10 seconds after powering ON.

NOTE: MAKE SURE THE MASTER/SLAVE SWITCH IS SET TO MASTER AFTER TOGGING BEFORE POWERING ON THE MASTER WIFI PACK.

3. The WiFi Network Name and Password will now reset to default.

Network Name: **Airstream WiFi Pack** | Network Password: **airstreamwifi**

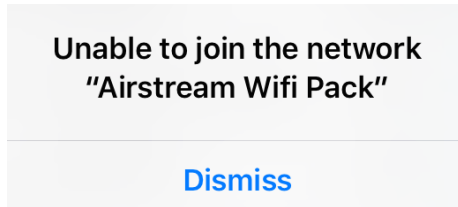
4. If not, repeat steps 1 and 2 above.
5. If none of these solutions work, please contact ADJ Customer Service.

TROUBLE SHOOTING TIPS [continued]

Forgot “LOCK” Password For the App

1. Contact ADJ Customer Service for a Master Code.
2. Enter Master Code as instructed by ADJ Customer Service to unlock the app.
3. Update the LOCK password and save password in a safe place.

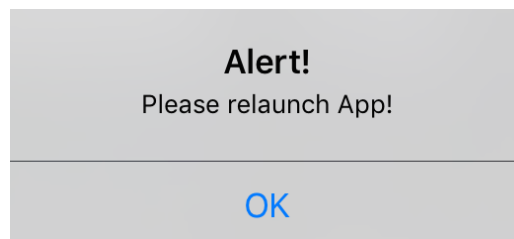
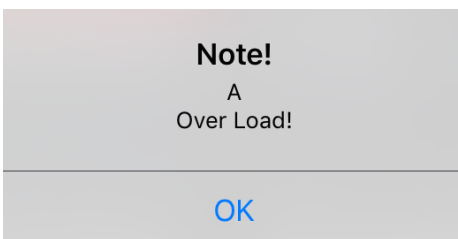
Unable To Join the network “Airstream Wifi Pack” Error Message



This error message is displayed on the mobile digital device due to one of these reasons:

1. The WIFI PACK is being controlled by another mobile digital device. Locate the controlling mobile digital device or reset the Master WIFI PACK to the default Network Name and Password.
2. The WiFi Network Name and/or Network Password have been changed. Reset the Master WIFI PACK to the default Network Name and Password.
3. There are NO WIFI PACKS that are set as the Master pack. Set 1 WIFI PACK to Master mode.
4. The controlling mobile digital device is out of range from the master WIFI PACK. Move the controlling mobile digital device within 150 feet (45m) of the Master WIFI PACK.

“Over Load!” and “Please relaunch App!” Error Messages



These error messages are displayed on the mobile digital device due to one of these reasons:

1. A device connected to one of the outlets (A-H) is drawing over the **8A / 960W** maximum load. Remove the device, reset the Power / Reset switch on the WIFI PACK, and relaunch the app.
2. A combination of multiple devices connected to the WIFI PACK is drawing over the **15A / 1800W** maximum load. Remove all devices, reset the Power / Reset switch on the WIFI PACK, and relaunch the app. Carefully check/confirm the max power consumption of each device before connecting to WIFI PACK. Make sure not to exceed the maximum load rating for the WIFI PACK.

FREQUENTLY ASKED QUESTIONS

Listed below are a few answers to common questions users may have.

1. How many WIFI PACKS can you connect to single mobile digital device?

You can connect (1) Master pack and up to (3) Slave packs for a total of (4) packs per mobile device.

2. What is the maximum distance you can control a WIFI PACK from your mobile digital device?

The maximum distance between the controlling mobile digital device and MASTER WIFI PACK, and between the MASTER WIFI PACK and additional SLAVE WIFI PACKS is **150 feet (45m)**.

3. What happens to WIFI PACK settings when it loses WiFi connection to your mobile device?

All timer, program, and schedule settings are saved directly to the WIFI PACK, so in the event it loses connection to the mobile digital device, all settings will remain unchanged. This also includes manual settings, which are saved in the app.

4. What happens to WIFI PACK settings when it loses AC power?

All timer, program, and schedule settings are saved directly to the WIFI PACK, so in the event it loses connection to the controlling mobile digital device, all settings will remain unchanged. All manual settings however will be lost and must be reset once power is regained to the WIFI PACK.

5. Can you add a name to each connected WIFI PACK instead of the numbers 1-4?

No, each connected WIFI PACK will be automatically assigned a number (1-4) depending on the order it connects to your Airstream WIFI network. However to help you differentiate between each connected WIFI PACK, you assign a different Pack Color ID besides the default red color. You can change the Pack Color ID in the Settings page in the app.

6. What is the maximum power draw per each power outlet (A-H)?

8A / 960W

7. What is the maximum power draw per each WIFI PACK?

15A / 1800W

8. What kind of lighting effect devices can you connect to the WIFI PACK?

You can connect any type of lighting effect to the WIFI PACK, as long as it does not exceed the maximum power draw for a single power outlet.

9. How many lighting effect devices can you connect to the WIFI PACK?

You can connect a total of (8) lighting effect devices to the WIFI PACK, as long as the combined total power draw of all (8) devices does not exceed the maximum power draw for a WIFI PACK.

PACK COLOR ID and OUTLET LIST

Keep track of the color of each of your WIFI PACKS and the devices connected to each outlet.

MASTER PACK (device name | location) _____



- A: _____
- B: _____
- C: _____
- D: _____
- E: _____
- F: _____
- G: _____
- H: _____

SLAVE PACK (device name | location) _____



- A: _____
- B: _____
- C: _____
- D: _____
- E: _____
- F: _____
- G: _____
- H: _____

PACK COLOR ID and OUTLET LIST

Keep track of the color of each of your WIFI PACKS and the devices connected to each outlet.

SLAVE PACK (device name | location) _____



- A: _____
- B: _____
- C: _____
- D: _____
- E: _____
- F: _____
- G: _____
- H: _____

SLAVE PACK (device name | location) _____



- A: _____
- B: _____
- C: _____
- D: _____
- E: _____
- F: _____
- G: _____
- H: _____

TECHNICAL SPECIFICATIONS

CONTROL / CONNECTIONS

Airstream WiFi App on iPhone, iPad, or iPod Touch mobile digital device with iOS 8.0 or later

Max On/OFF Cycles: > 50,000

WiFi Frequency: 2.4 GHz 802.11b

WiFi Range: Up To 150 Ft. (45m)*

*150 Ft. (45m) from controlling mobile digital device to Master WIFI PACK

*150 Ft. (45m) from Master WIFI PACK to Slave WIFI PACK(s) - 3 Slave Packs MAX

*Actual range may vary depending on several factors

SIZE / WEIGHT

Length: 7.9" (200 mm)

Width: 4.7" (120 mm)

Horizontal Height: 3.2" (82 mm)

Weight: 3.0 lbs. (1.4 kg)

ELECTRICAL / THERMAL

AC 125 VAC 60Hz

Single Channel Max Loading: 8A / 960W

Total Max Loading: 15A / 1800W

No Load Max Power Consumption: 7.7W

Working Humidity: <85%RH

Working Temperature: 32°F to 131°F (0°C to 55°C)

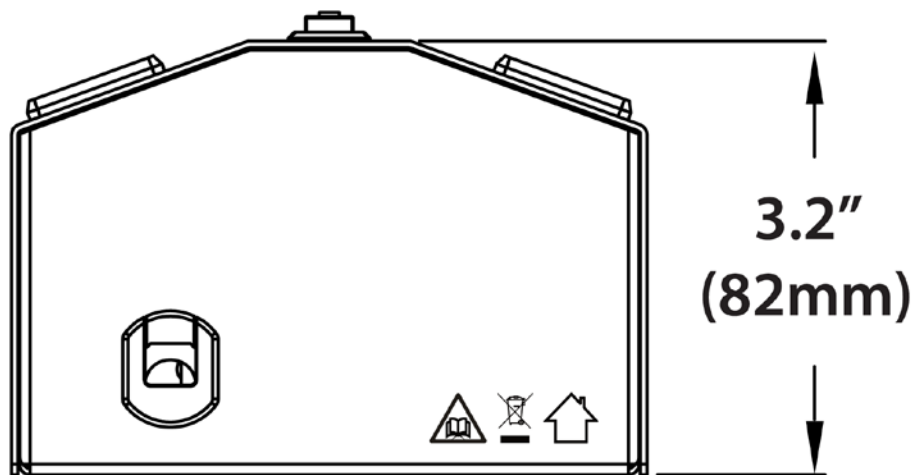
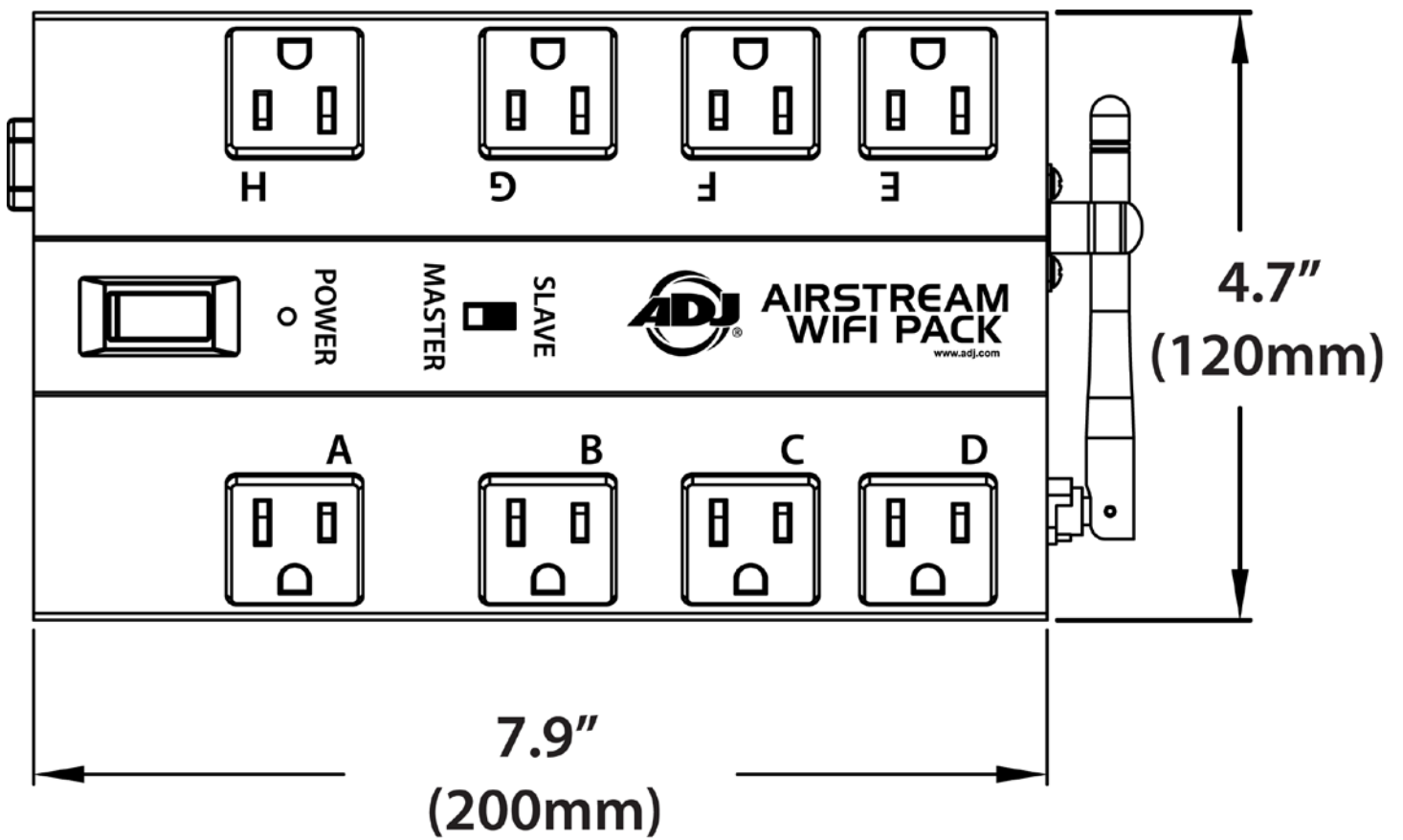
APPROVALS / RATINGS



Intertek
5004962



DIMENSIONAL DRAWINGS



Specifications and improvements in the design of this unit and this manual are subject to change without any prior written notice.

NOTES

