

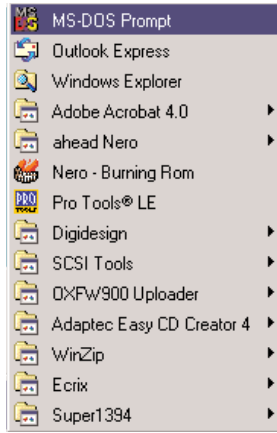
Formatting your Netdrives Drive for Windows 98

Start Here

Your new Netdrives drive has been formatted for the Mac. To use the drive with your Windows system, you'll need to format your hard disk for Windows.

It's easy. Here's what you do.

From your computer's Taskbar, go to Start > Programs > MS-DOS Prompt.



1. Your screen should display the following.

```
Microsoft(R) Windows 98
(C)Copyright Microsoft Corp 1981-1999.
C:\WINDOWS>_
```

2. At the prompt, type fdisk at the prompt, then press Enter as shown below.

```
Microsoft(R) Windows 98
(C)Copyright Microsoft Corp 1981-1999.
C:\WINDOWS>fdisk_
```

3. When you get the following message about large disk support, type Y for yes, and press Enter. (Always press Enter to enter the data you have just typed.)

```
you enable large disk support and create any new d
l not be able to access the new drive(s) using o
uding some versions of Windows 95 and Windows NT, a
ons of Windows and MS-DOS. In addition, disk utilit
igned explicitly for the FAT32 file system will not
this disk. If you need to access this disk with oth
der disk utilities, do not enable large drive suppo
o enable large disk support (Y/N).....? [Y]
```

4. Now choose which disk to work with. Enter 5.

```
Choose one of the following:
1. Create DOS partition or Logical DOS Drive
2. Set active partition
3. Delete partition or Logical DOS Drive
4. Display partition information
5. Change current fixed disk drive

Enter choice: [5]
```

In the next screen...

5. Enter the number of the disk that has no corresponding drive letter (in the example that's Disk 2).

| Change Current Fixed Disk D | | | | |
|-----------------------------|-----|--------|-------|-------|
| Disk | Drv | Mbytes | Free | Usage |
| 1 | | 8676 | 1 | 100% |
| | C: | 6934 | | |
| | D: | 1741 | | |
| 2 | | 17500 | 17500 | % |

6. It's now time to create a partition.

```
Current fixed disk drive: 2
Choose one of the following:
1. Create DOS partition or Logical DOS Drive
2. Set active partition
3. Delete partition or Logical DOS Drive
4. Display partition information
5. Change current fixed disk drive
```

7. Enter 1 to create a primary DOS partition.

```
Create DOS Partition or Logical DO
Current fixed disk drive: 2
Choose one of the following:
1. Create Primary DOS Partition
2. Create Extended DOS Partition
3. Create Logical DOS Drive(s) in the Extended DOS
```

8. Your computer will verify the drive integrity, and you'll see the progress in the next screen.

```
Verifying drive integrity, 10% complete.
```

9. When you're asked whether you want to use the maximum available size, enter Y.

```
Create Primary DOS Partition
Current fixed disk drive: 2
Do you wish to use the maximum available size for a Primary DOS Partition
(Y/N).....? [Y]
```

10. You'll see the integrity being verified a second time. What can you do? Nothing. Hang out.

```
Verifying drive integrity, 10% complete.
```

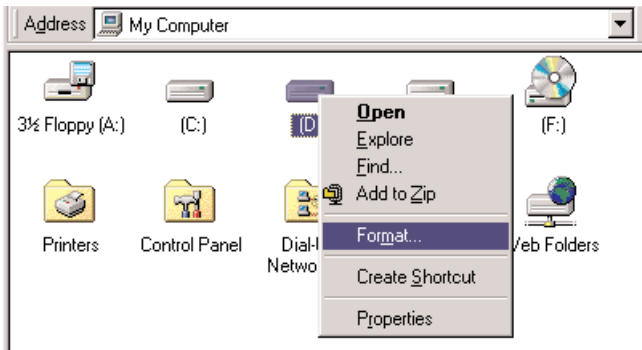
11. Once drive integrity is verified, you'll have to press escape three times in order to exit fdisk. Once back at the C:\WINDOWS> prompt, enter the word "exit", to quit the MS-DOS Prompt. Then restart your computer.

When Windows returns, the hard disk will show up as a new drive letter in Windows Explorer.

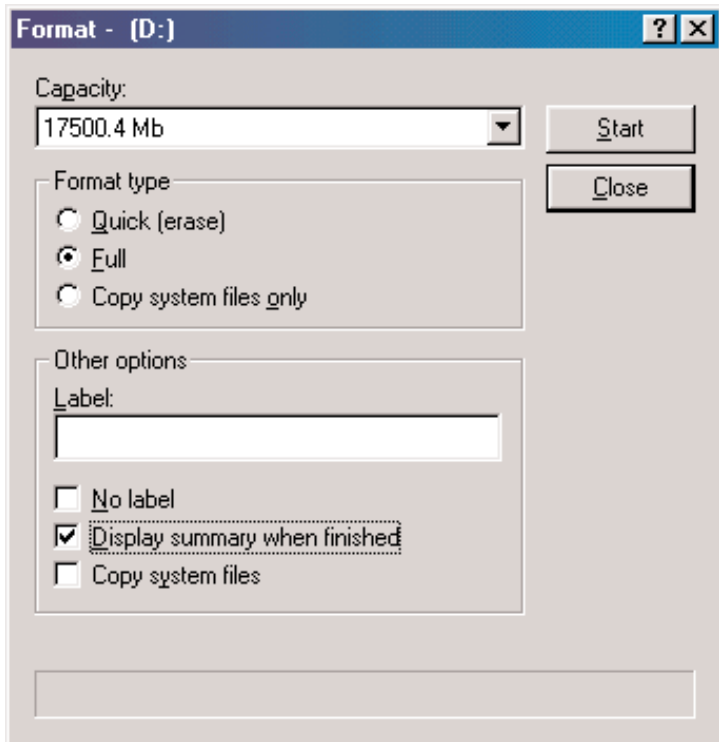
Since Windows doesn't necessarily assign the next available drive letter to your new volume, **make sure that you're formatting the correct disk.**

To do this, select the drive you suspect to be your Netdrives drive, right-click it and choose **Properties** in the popup menu. the Netdrives drive will show **Capacity: 0.**

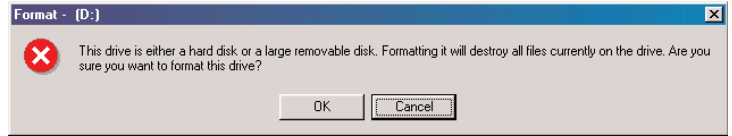
12. Once you're absolutely sure you're working with the correct drive, right-click that drive, and choose **Format** from the pop-up menu.



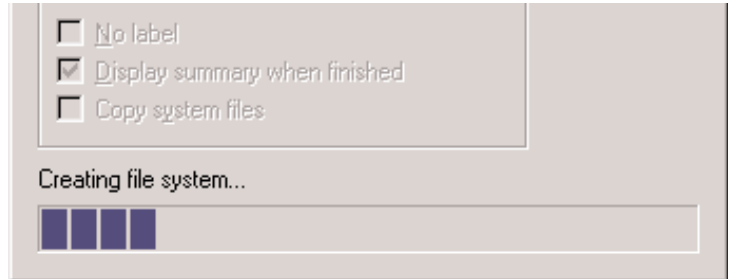
13. In the Format dialog, under Format Type, choose Full.



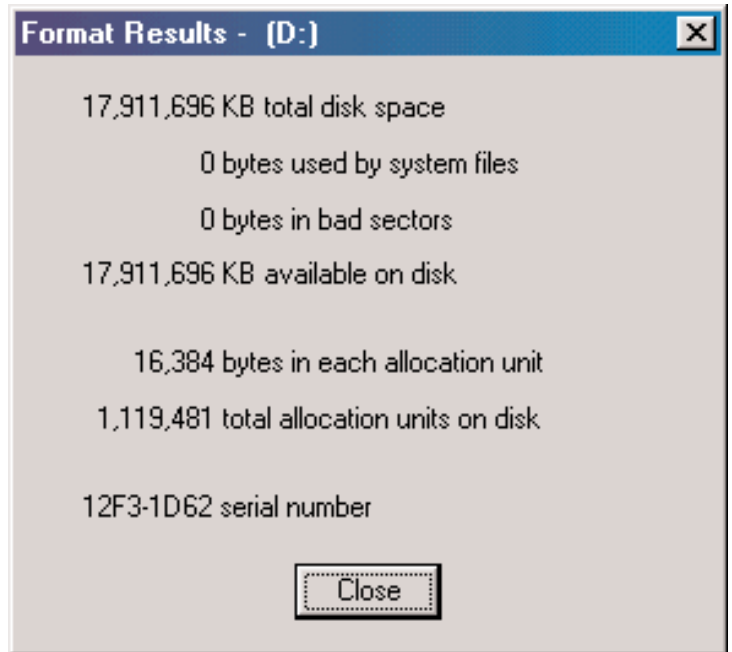
14. Now you'll get a scary message. Don't be scared. Click OK.



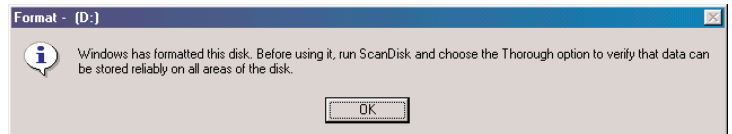
15. You'll see the status bar at the bottom on the window. You'll start to taste the power...



16. Now you will see the results.



17. You will now get a message telling you to run ScanDisk, which you can safely ignore.



18. Your Netdrives drive has been re-formatted for your Windows 98 system and you're ready to rock.

Now go ahead and make art.