

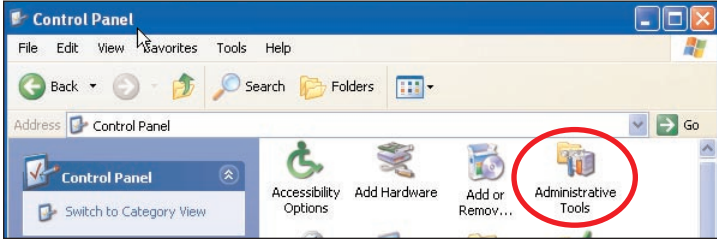


Hard Drive Addendum

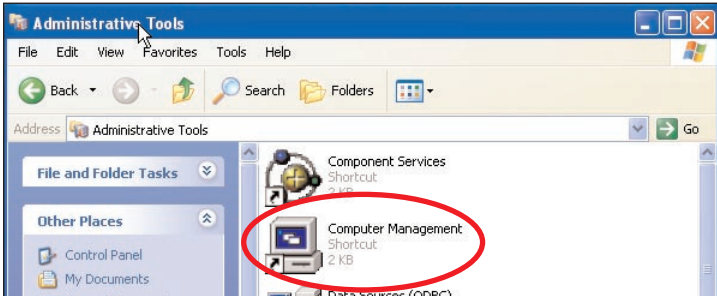
Formatting your Glyph Drive for Windows XP

Your new Glyph drive has been formatted for the Mac. To use the drive with your Windows system, you'll need to format your hard disk for Windows.

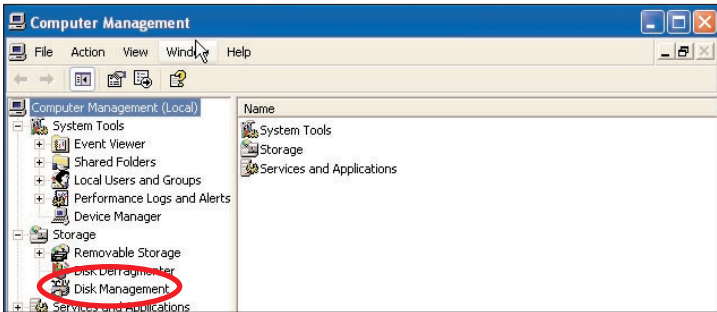
1. Open your Control Panel and click Administrative Tools.



2. Click Computer Management.

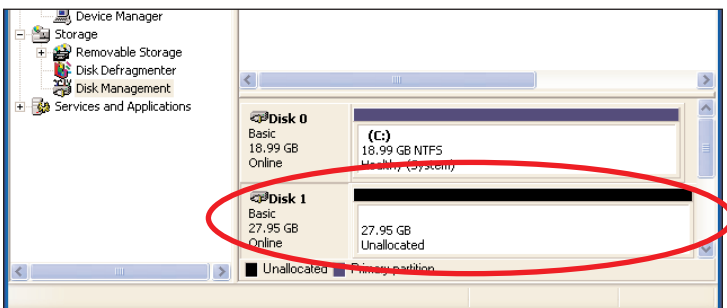


3. Click Disk Management.

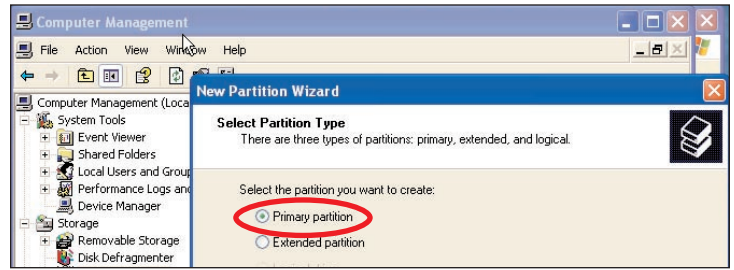


4. The Wizard will pop up here to help. Click Cancel.

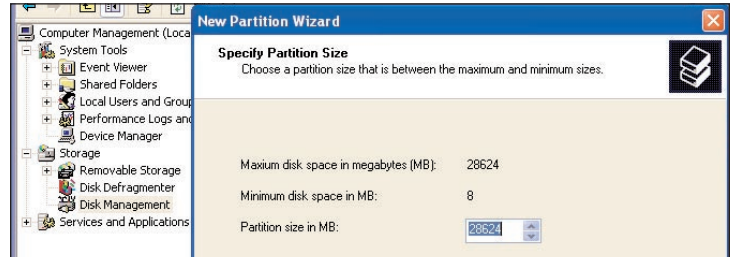
5. The drive should show up in the right hand side of the screen and could be designated Disk 1, depending on how many drives you already have.



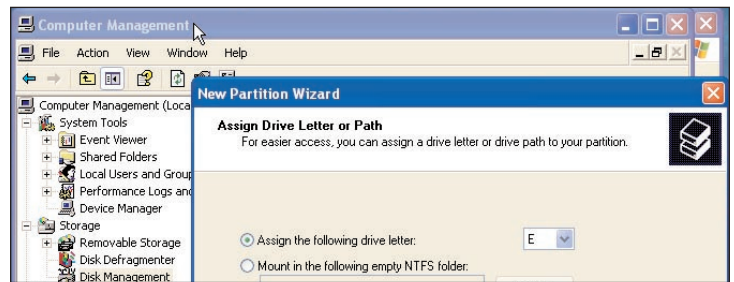
6. Right-click Disk 1 and choose Initialize. The wizard should pop up again. Choose Primary Partition.



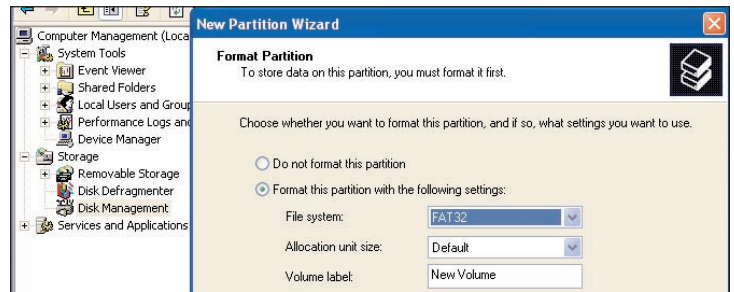
7. Next choose the partition size. Select the maximum if you want only one partition.



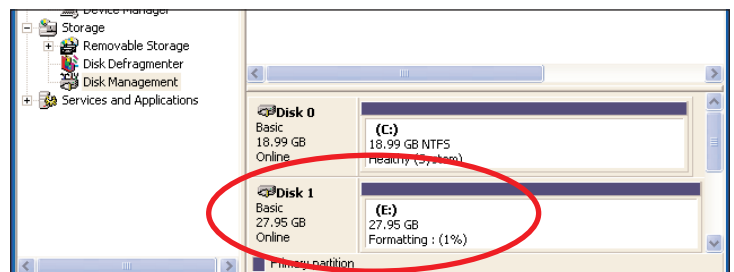
8. Assign the drive letter.



9. Choose Fat32 or NTFS (Fat32 will show up on PCs running 98, ME, etc. NTFS will work only on 2000 & XP.)



10. Drive formatting. . .



Your Glyph hard drive is now formatted and ready for use.