

ew 300 System

Modulation	wideband FM
Frequency ranges	518-550, 630-662, 740-772, 790-822, 838-870 MHz
Switchable frequencies	1,280
Frequency presets	8
Switching bandwidth	32 MHz
Peak deviation	± 48 kHz
Compander system	Sennheiser HDX
AF frequency response	60-18,000 Hz
Signal-to-noise ratio	> 110 dB (A)
THD (1 kHz)	< 0.9 %
In compliance with	ETS 300 422, ETS 300 445, CE, FCC
System case	Dimensions: 380 x 370 x 70 mm Weight: approx. 3 kg

EM 300 Rack-Mount Receiver

Receiver type	True Diversity
Antenna inputs	2 BNC sockets, 50 Ω
AF outputs	1/4" jack socket, XLR-3F
Max. output level	balanced: + 10 dBu, unbalanced: + 4 dBu
Headphone output	—
Power supply	10.5 – 16 V DC
Dimensions	212 x 145 x 38 mm
Weight	approx. 1,100 g

Microphones for SK 300

	ME 2	ME 4	ME 3 Headset
Transducer	electret	electret	electret
Sensitivity	20 mV/Pa	40 mV/Pa	1.6 mV/Pa
Max. SPL	130 dB	120 dB	150 dB
Pick-up pattern	omni	cardioid	super-cardioid

Microphone Heads for SK M 300

	MD 835	MD 845	ME 865
Transducer	dynamic	dynamic	electret
Sensitivity	1.5 mV/Pa	1 mV/Pa	3 mV/Pa
Max. SPL	150 dB	154 dB	144 dB
Pick-up pattern	cardioid	super-cardioid	super-cardioid

Transmitters

	SKM 300 Handheld Transmitter	SK 300 Bodypack Transmitter
RF output power	typ. 30 mW	typ. 30 mW
Power supply	9 V alkaline-manganese, 6LR61	9 V alkaline-manganese, 6LR61
Operating time	> 8 h	> 8 h
Max. input voltage	—	Mic 1.8 V _{rms} / Line 2.4 V _{rms}
Phantom powering	—	—
Dimensions	Ø 50 mm, l = 225 mm	110 x 65 x 22 mm
Weight	approx. 450 g	approx. 255 g

evolutionwireless



300 Series

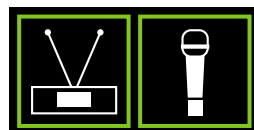
The Wireless
Microphone Series



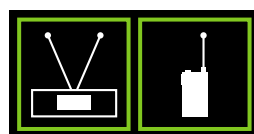
Wireless Performance for Professionals

evolutionwireless

Whether a permanent system or mobile tour gear: the 300 Series offers increased flexibility and power. Audio transmission for stage and presentations – evolution wireless™ has the right system for every requirement.



Sets with handheld transmitters are the classic solution for on-stage vocal work. Various microphone heads are available to suit your every requirement.



Sets with bodypack transmitters (plus a clip-on mic or a headset) are ideal for a performer or speaker who needs free use of both hands. A bodypack also liberates your instrument from the constrictions of a cable!

The rack-mount EM 300 true diversity receiver is at the heart of all these systems – whether on stage or in the broadcast studio.

The 300 Series features 8 frequency presets to save you a lot of time when operating several channels simultaneously on stage. A user-friendly display on the EM 300 rack-mount receiver allows you to quickly read off the channel, the frequency used or the name of the performer.

An easy-to-read peak-hold display will temporarily “freeze” peak signal levels and facilitate accurate monitoring.

The audio outputs are available both as a balanced XLR and 1/4” socket.

The 300 Series: a guarantee of quality and reliability.

300 S E R I E S

evolution wireless Features

- Preconfigured, ready-to-use systems for every application and every requirement
- Enormous flexibility: 1,280 switchable UHF frequencies
- High output power for long transmission range
- True diversity receivers for highest transmission reliability
- Transmitters and receivers with rugged metal housing
- User-friendly menu control with LC display
- HDX compander for crystal-clear sound
- Low battery consumption allows longer performances
- Stationary receiver and transmitter models designed for 19” standard racks
- Low-battery warning
- Wireless microphones and in-ear systems fully compatible
- Comprehensive range of accessories to adapt the systems to any application
- Suitable for multi-channel operation

300 Series Features

- Great ease of use thanks to eight switchable preset frequencies
- Receiver can indicate individual, easy-to-match channel names (e.g. “lead vocal”)
- Balanced audio outputs: XLR and 1/4”
- Easy-to-read display with peak-hold meter

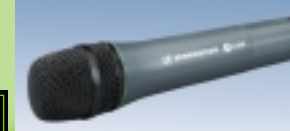
Set Overview

Every preconfigured set includes the rack-mount EM300 receiver.



- + SKM 300 handheld transmitter
- + MD 835 dynamic microphone head, cardioid

Set ew 335



- + SKM 300 handheld transmitter
- + MD 845 dynamic microphone head, super-cardioid

Set ew 345



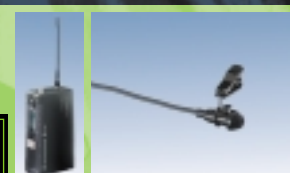
- + SKM 300 handheld transmitter
- + ME 865 condenser microphone head, super-cardioid

Set ew 365



- + SK 300 bodypack transmitter
- + ME 2 clip-on microphone, omni

Set ew 312



- + SK 300 bodypack transmitter
- + ME 4, clip-on microphone, cardioid

Set ew 322



- + SK 300 bodypack transmitter
- + ME 3 headset, super-cardioid

Set ew 352



- + SK 300 bodypack transmitter
- + Instrument cable

Set ew 372



Accessories



CC1 – Hard-shell case for your evolution wireless set



MZQ 1 – Microphone clamp for handheld transmitter



MZW 1 – Wind screen for handheld transmitter



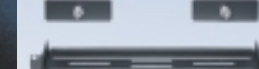
CL 2 – Line cable for bodypack transmitter



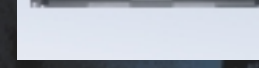
CI 1 – Guitar cable for bodypack transmitter



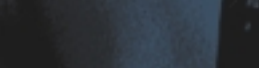
AB 1 – Antenna booster for use with ASP1



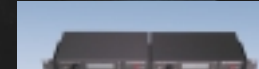
ASP 1 – Antenna splitter with centralized power supply for receivers



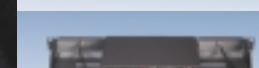
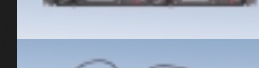
AM 1 – Front antenna mount



GA 1 – 19” Rack adapter for 2 EM 300 receivers with ASP 1 or 1 receiver with ASP1 and AM1



Application examples of the GA1 rack adapter and AM1 antenna mount



Below: Circuit diagram of the ASP 1 antenna splitter feeding four receivers by a single pair of antennas

