



**PROFESSIONAL SERIES**

**DELTA PRO-18A**

Long throw subwoofer for very small vented boxes. Over-sized top plate and large pole vent help keep the coil cool.



**SPECIFICATION**

Nominal Basket Diameter	18.0", 457 mm
Nominal Impedance*	8 Ω
Power Rating**	
Watts	500 W
Music Program	1000 W
Resonance	28 Hz
Usable Frequency Range	37 Hz – 0.2 kHz
Sensitivity***	96.0 dB
Magnet Weight	67 oz.
Gap Height	.380", 9.7 mm
Voice Coil Diameter	2.5", 64 mm

**THIELE & SMALL PARAMETERS\***

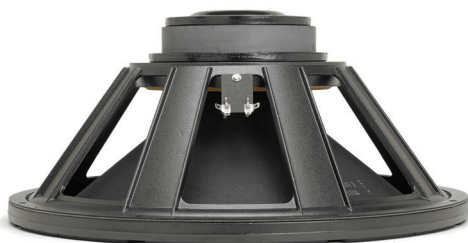
Fs	28 Hz
Re	5.30 Ω
Le	3.43 mH
Qms	10.38
Qes	0.33
Qts	0.32
Vas	17.42 cu.ft., 493.20 liters
Vd	796.0 cc
Cms	0.25 mm/N
BL	18.90 T-M
Mms	128 grams
EBP	84
Xmax	6.70 mm
Sd	1188.0 cm <sup>2</sup>
Xlim	15.0 mm

**MOUNTING INFORMATION**

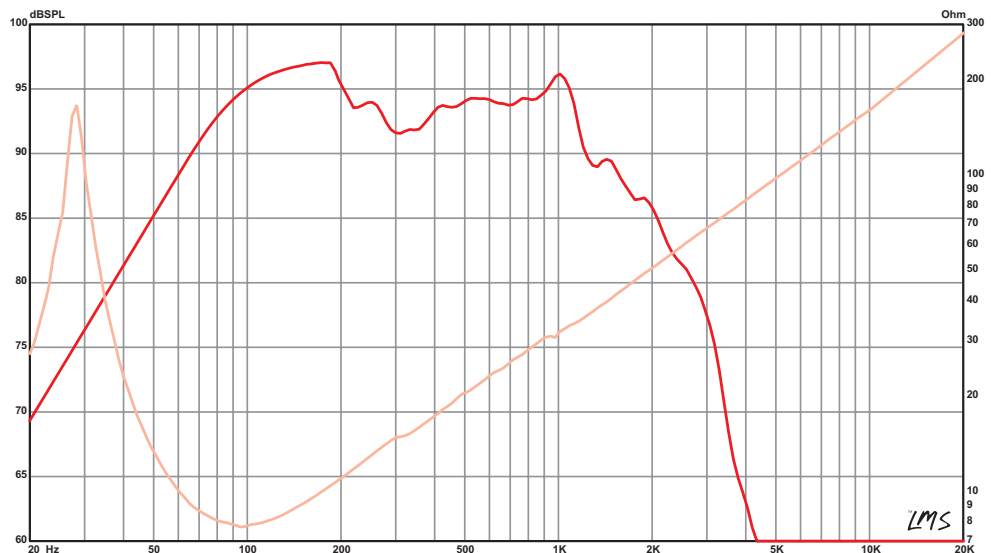
Recommended Enclosure Volume	
Sealed	N/A
Vented	85.00–297.00 liters, 3.00–10.50 cu.ft.
Driver Volume Displaced	0.212 cu.ft., 6.01 liters
Overall Diameter	18.00", 457.2 mm
Baffle Hole Diameter	16.57", 420.9 mm
Front Sealing Gasket	Yes
Rear Sealing Gasket	Yes
Mounting Holes Diameter	0.28", 7.1 mm
Mounting Holes B.C.D.	17.25", 438.2 mm
Depth	8.13", 206.5 mm
Net Weight	17.00 lbs, 7.71 kg
Shipping Weight	20.50 lbs, 9.30 kg

**MATERIALS OF CONSTRUCTION**

- \_\_\_\_\_ Copper voice coil
- \_\_\_\_\_ Polyimide former
- \_\_\_\_\_ Ferrite magnet
- \_\_\_\_\_ Vented and extended core
- \_\_\_\_\_ Die-cast aluminum basket
- \_\_\_\_\_ Paper cone
- \_\_\_\_\_ Cloth cone edge
- \_\_\_\_\_ Solid composition paper dust cap



**FREQUENCY RESPONSE & IMPEDANCE CURVE\***





*From design and manufacturing to the stage or studio. Once you've experienced the performance of Eminence, you'll never accept anything else.*

## MISSION STATEMENT

*Eminence is dedicated to providing the best Quality, Value and Service to meet our customers' needs.*

## FOOTNOTES

- \* Please consult [www.eminence.com](http://www.eminence.com) for specifications of models with alternative impedances.
- \*\* Multiple units exceed published ratings evaluated under EIA 426A specification while tested in a free-air, non-temperature-controlled environment.
- \*\*\* The average output across the usable frequency range when applying 1W/1m into the nominal impedance. i.e: 2.83V/8Ω, 4V/16Ω. Eminence response curves are measured under the following conditions: All speakers are tested at 1W/1m using a variety of test set-ups for the appropriate impedance | LMS using 0.25" supplied microphone (software calibrated) mounted 1m from wall/baffle | 2 ft. x 2 ft. baffle is built into the wall with the speaker mounted flush against a steel ring for minimum diffraction | Carver PM-120 amplifier | 2700 cu. ft. chamber with fiberglass on all six surfaces (three with custom-made wedges).
- \*\*\*\* BETA 8CX, 10CX, and 12CX are coaxial speakers with tweeter sold separately. Published usable frequency response contingent upon use of ASD:1001 HF Driver.
- \*\*\*\*\* Multiple units exceeded published ratings evaluated under EIA-426A or AES specification while mounted on Eminence's H290, H290S, or H2EA horn in a non-temperature-controlled environment.
- \*\*\*\*\*The average on axis output across the entire usable frequency range when applying 1W/1m into the nominal impedance, i.e. 2.83V/8Ω, 4V/16Ω. Eminence response curves are measured under the following conditions: All speakers are tested at 1W/1m using a variety of test set-ups for the appropriate impedance | LMS using 0.25" supplied microphone (software calibrated) mounted 1m from wall/baffle | 2ft x 2ft baffle is built into the wall with horn front mounted | Carver PM-120 amplifier | 2700 cu.ft. chamber with fiberglass on all six surfaces (three with custom-made wedges).

Prices, specifications and product cosmetics are subject to change without notice.

**EMINENCE SPEAKER LLC**

838 Mulberry Pike, Eminence, KY 40019



*Follow us:*

[EMINENCE.COM](http://EMINENCE.COM)

